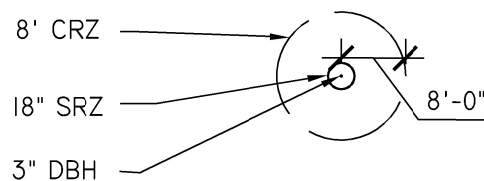


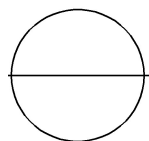
TREES LARGER THAN 8"
1" DBH = 1' CRZ RADIUS

TREES 8" DBH AND SMALLER
8' CRZ RADIUS



NOTES:

1. CRZ (CRITICAL ROOT ZONE) IS THE AREA OF SOIL AROUND A TREE WHERE THE MINIMUM AMOUNT OF ROOTS CONSIDERED ESSENTIAL FOR TREE HEALTH ARE LOCATED. CRZ IS GENERALLY EQUAL TO ONE FOOT RADIUS PER INCH DBH.
2. DBH (DIAMETER BREAST HEIGHT) IS THE DIAMETER OF A TREE TRUNK MEASURED AT 4.5' FROM THE GROUND. REFER TO THE LATEST EDITION OF "GUIDE FOR PLANT APPRAISAL" WHEN TREE FORM OR SITE CONDITIONS ARE NOT STANDARD.
3. DBH FOR MULTI-STEM TREES WILL BE EQUAL TO THE SQUARE ROOT OF THE SUM OF THE DBH FOR EACH STEM, SQUARED.
Example: $\sqrt{(A^2+B^2+C^2)} = \text{DBH}$
4. SRZ (STRUCTURAL ROOT ZONE) IS THE AREA ESSENTIAL FOR TREE STABILITY. SRZ IS GENERALLY A RADIUS OF 6X DBH, MEASURED FROM THE BASE OF THE TRUNK.
5. THE CRZ MAY BE ADJUSTED BASED ON CURRENT ISA BEST MANAGEMENT PRACTICES, WHERE SIZE, SPECIES, CONDITION, OR INFRASTRUCTURE PRESENCE REQUIRE MODIFICATION. THE SRZ MAY BE ADJUSTED BASED ON URBAN FORESTER GUIDANCE.



CRITICAL ROOT ZONE DELINEATION

PLAN 311300.3 (2024)

THIS DETAIL SUPERSEDES ALL
OTHER CRZ DETAILS IN ARLINGTON COUNTY.

