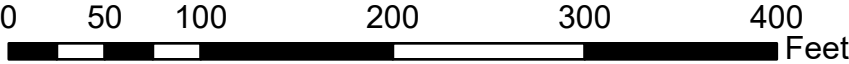


OIPI GAP-TA Custis Trail
Public Comment Map Series
Page 1 of 24



Segment

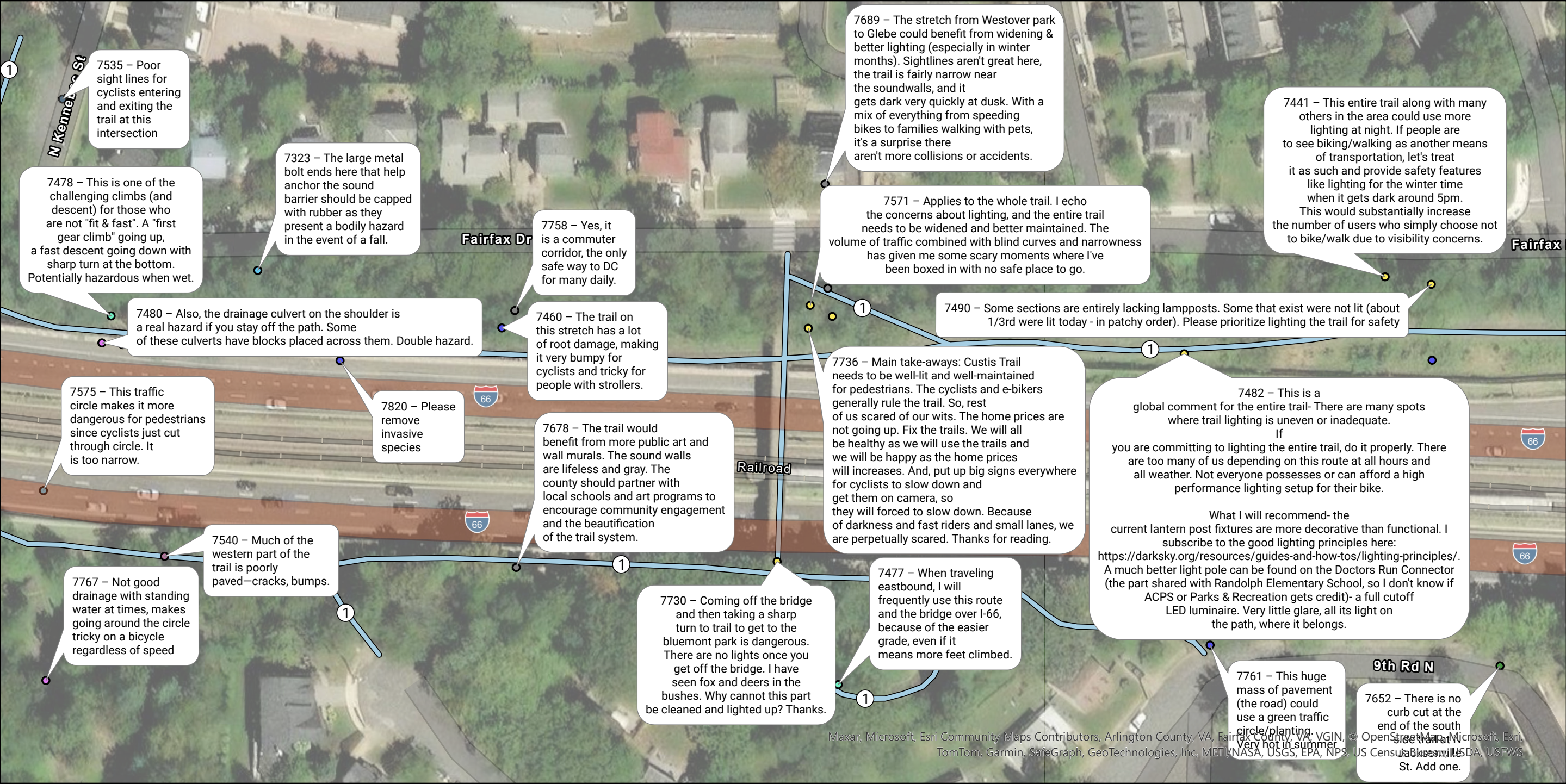
- 1 - Bon Air Park
- 2 - Bluemont
- 3 - Waycroft-Woodlawn
- 4 - Waverly Hills

- 5 - Cherry Valley Park
- 6 - Thrifton Hill Park
- 7 - Spout Run
- 8 - North Highlands
- 9 - Rosslyn

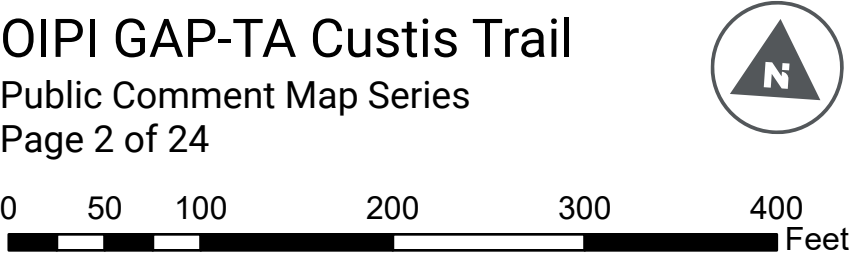
Issue Type

- Curb Ramp
- Drainage/Ponding
- Dropoff/Sewer Grates
- Fixed Object

- Lighting
- Other Amenity
- Pavement Condition
- Signage/Wayfinding
- Steep Slope
- Trail Width
- Tree/Rooting
- Visibility/Blind Spots
- Other



OIPI GAP-TA Custis Trail
Public Comment Map Series
Page 2 of 24



Segment

- 1 - Bon Air Park
- 2 - Bluemont
- 3 - Waycroft-Woodlawn
- 4 - Waverly Hills

5 - Cherry Valley Park

- 6 - Thrifton Hill Park
- 7 - Spout Run
- 8 - North Highlands
- 9 - Rosslyn

Issue Type

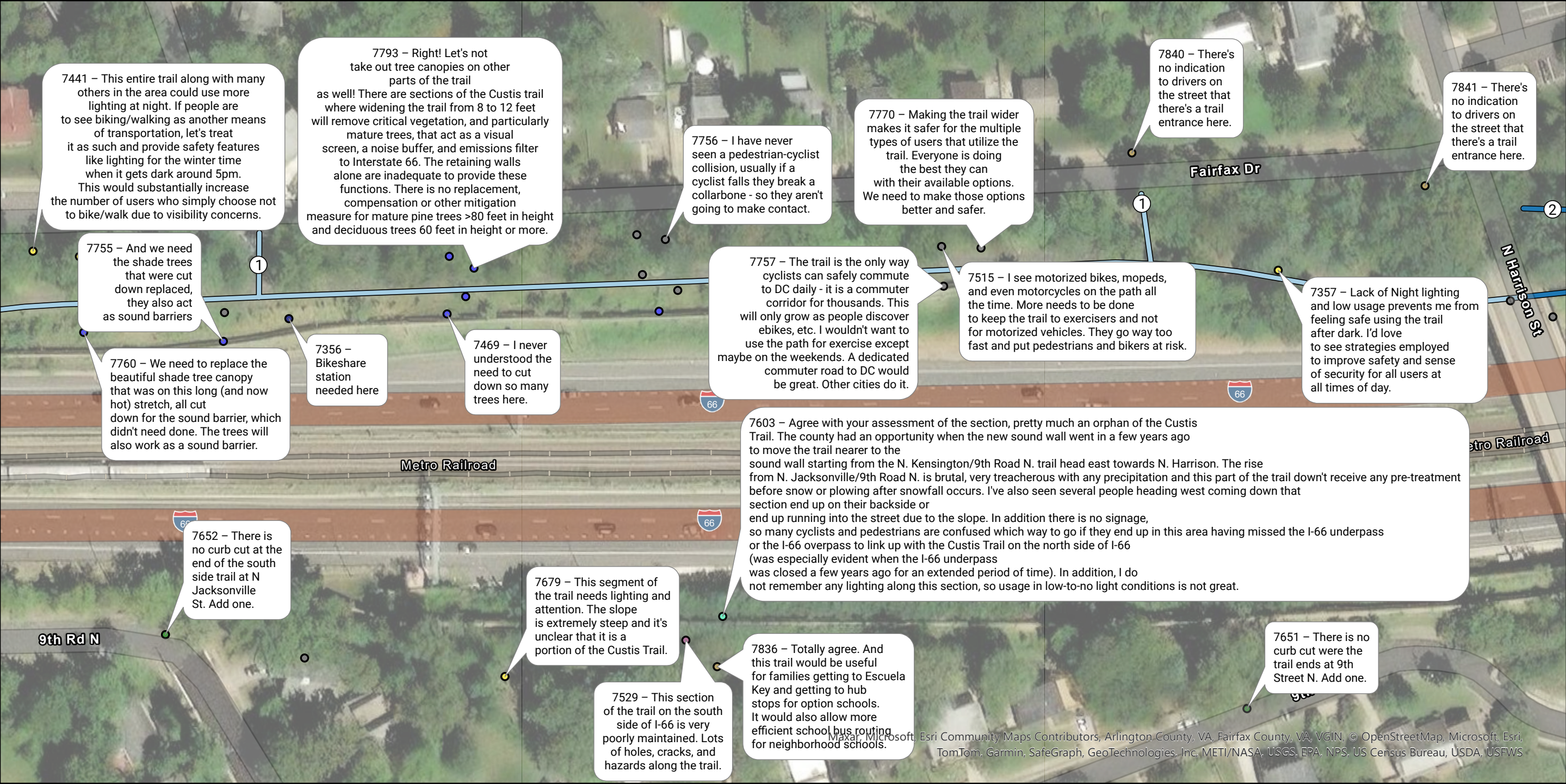
- Curb Ramp
- Drainage/Ponding
- Dropoff/Sewer Grates
- Fixed Object

Lighting

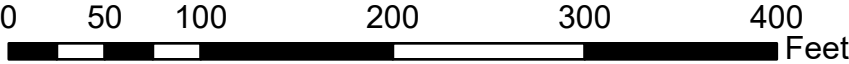
- Other Amenity
- Pavement Condition
- Signage/Wayfinding
- Steep Slope
- Trail Width

Tree/Rooting

- Visibility/Blind Spots
- Other



OIPI GAP-TA Custis Trail
Public Comment Map Series
Page 3 of 24



Segment

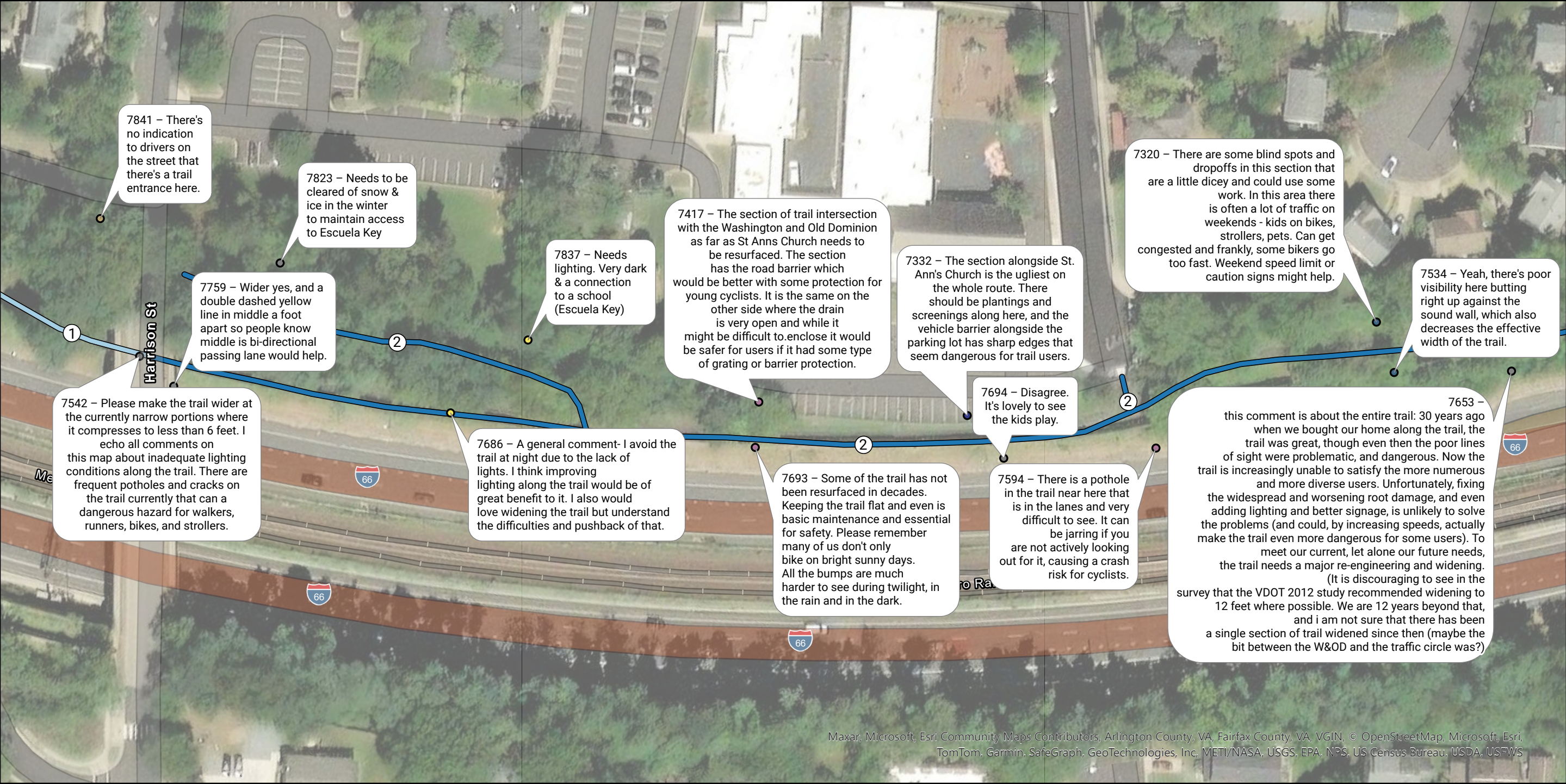
- 1 - Bon Air Park
- 2 - Bluemont
- 3 - Waycroft-Woodlawn
- 4 - Waverly Hills

- 5 - Cherry Valley Park
- 6 - Thrifton Hill Park
- 7 - Spout Run
- 8 - North Highlands
- 9 - Rosslyn

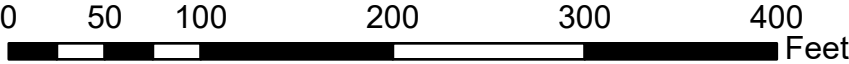
Issue Type

- Curb Ramp
- Drainage/Ponding
- Dropoff/Sewer Grates
- Fixed Object

- Lighting
- Other Amenity
- Pavement Condition
- Signage/Wayfinding
- Steep Slope
- Trail Width
- Tree/Rooting
- Visibility/Blind Spots
- Other



OIPI GAP-TA Custis Trail
Public Comment Map Series
Page 4 of 24



Segment

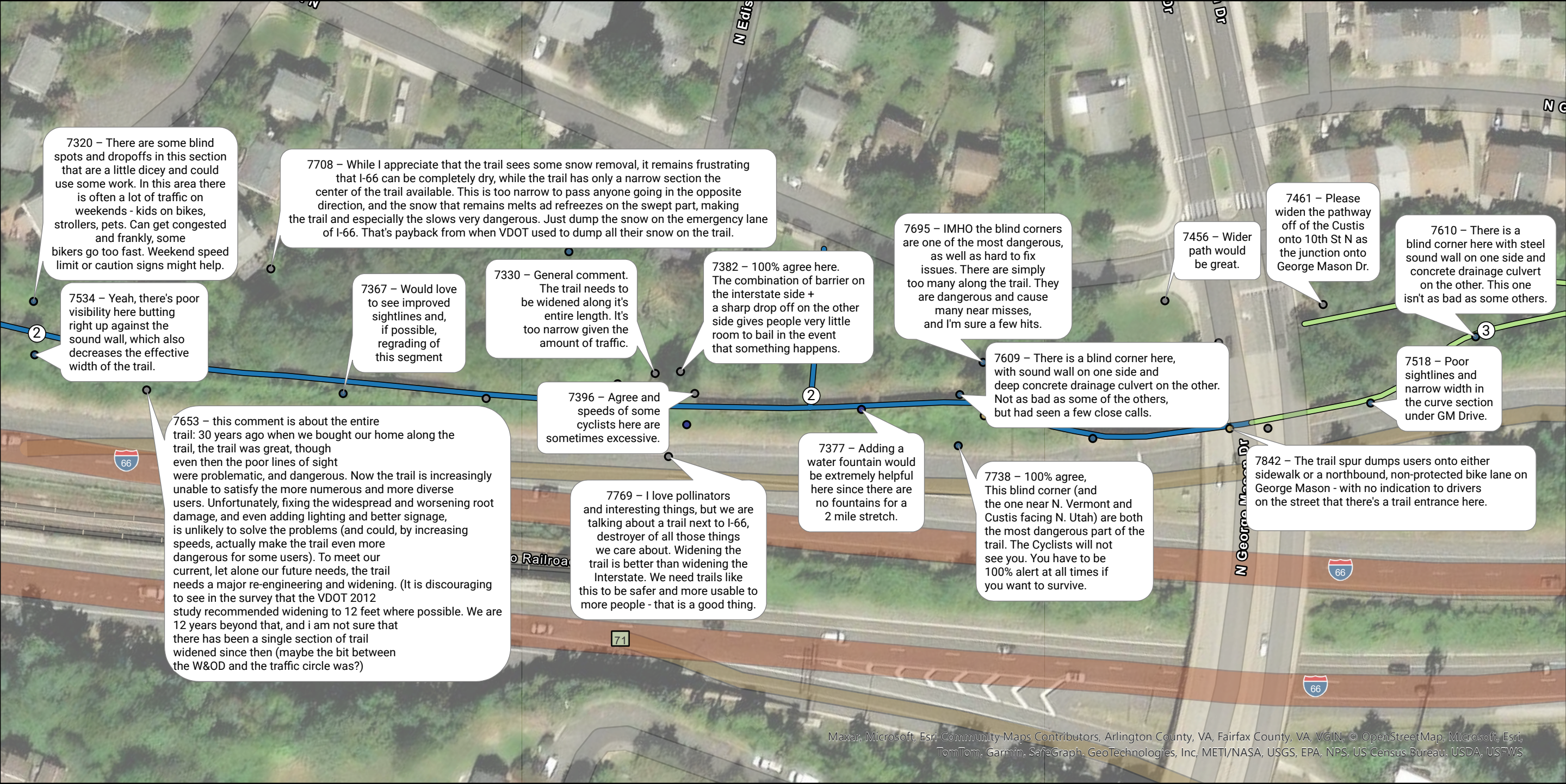
- 1 - Bon Air Park
- 2 - Bluemont
- 3 - Waycroft-Woodlawn
- 4 - Waverly Hills

- 5 - Cherry Valley Park
- 6 - Thrifton Hill Park
- 7 - Spout Run
- 8 - North Highlands
- 9 - Rosslyn

Issue Type

- Curb Ramp
- Drainage/Ponding
- Dropoff/Sewer Grates
- Fixed Object

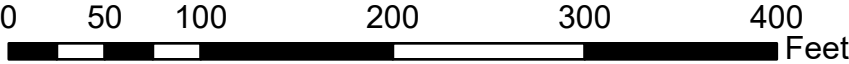
- Lighting
- Other Amenity
- Pavement Condition
- Signage/Wayfinding
- Steep Slope
- Trail Width
- Tree/Rooting
- Visibility/Blind Spots
- Other



OIPI GAP-TA Custis Trail

Public Comment Map Series

Page 5 of 24



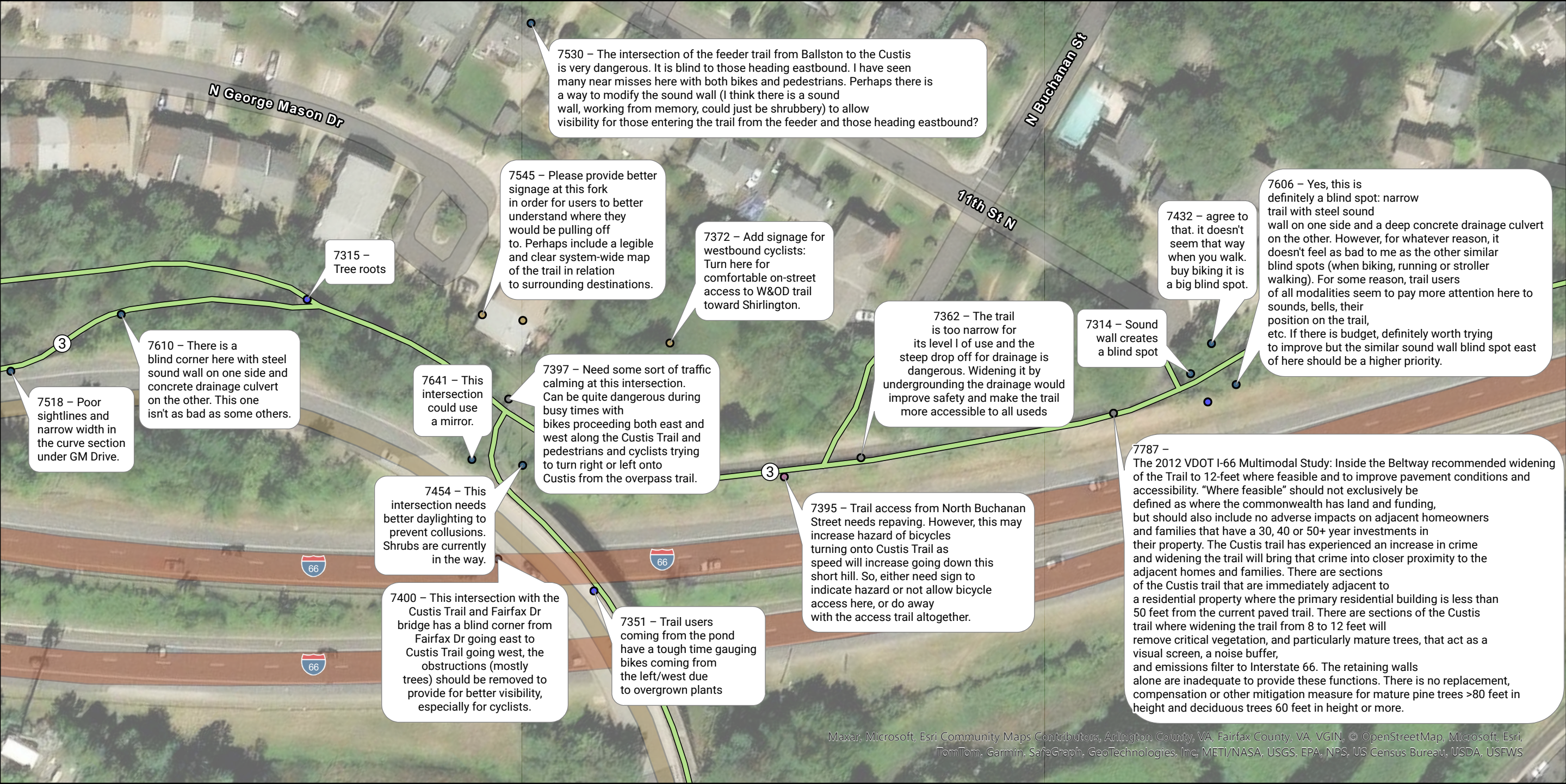
Segment

- 1 - Bon Air Park
- 2 - Bluemont
- 3 - Waycroft-Woodlawn
- 4 - Waverly Hills

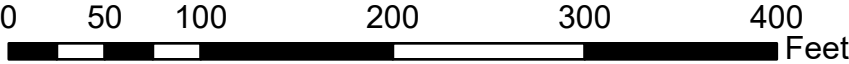
- 5 - Cherry Valley Park
- 6 - Thrifton Hill Park
- 7 - Spout Run
- 8 - North Highlands
- 9 - Rosslyn

Issue Type

- Curb Ramp
- Drainage/Ponding
- Dropoff/Sewer Grates
- Fixed Object
- Lighting
- Other Amenity
- Pavement Condition
- Signage/Wayfinding
- Steep Slope
- Trail Width
- Tree/Rooting
- Visibility/Blind Spots
- Other



OIPI GAP-TA Custis Trail
Public Comment Map Series
Page 6 of 24

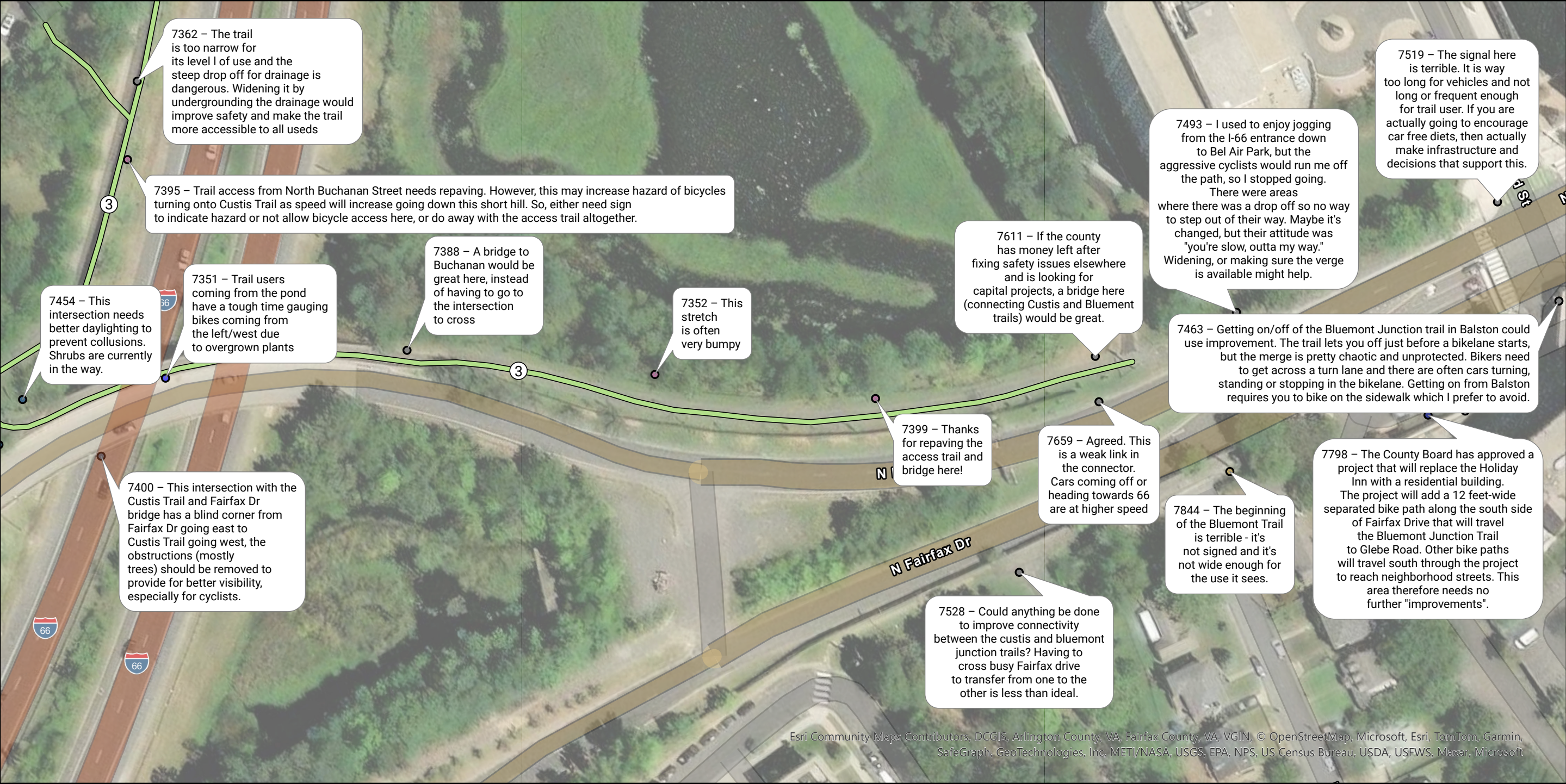


Segment

- | | |
|-----------------------|------------------------|
| 1 - Bon Air Park | 5 - Cherry Valley Park |
| 2 - Bluemont | 6 - Thrifton Hill Park |
| 3 - Waycroft-Woodlawn | 7 - Spout Run |
| 4 - Waverly Hills | 8 - North Highlands |
| | 9 - Rosslyn |

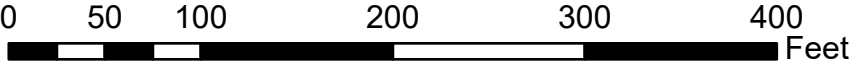
Issue Type

- | | | |
|------------------------|----------------------|--------------------------|
| ● Curb Ramp | ● Lighting | ● Tree/Rooting |
| ● Drainage/Ponding | ● Other Amenity | ● Visibility/Blind Spots |
| ● Dropoff/Sewer Grates | ● Pavement Condition | ● Other |
| ● Fixed Object | ● Signage/Wayfinding | |
| | ● Steep Slope | |
| | ● Trail Width | |



Esri Community Maps Contributors, DCGIS, Arlington County, VA, Fairfax County, VA, VGIN, © OpenStreetMap, Microsoft, Esri, TomTom, Garmin, SafeGraph, GeoTechnologies, Inc, METI/NASA, USGS, EPA, NPS, US Census Bureau, USDA, USFWS, Maxar, Microsoft

OIPI GAP-TA Custis Trail
Public Comment Map Series
Page 7 of 24



Segment

- 1 - Bon Air Park
- 2 - Bluemont
- 3 - Waycroft-Woodlawn
- 4 - Waverly Hills

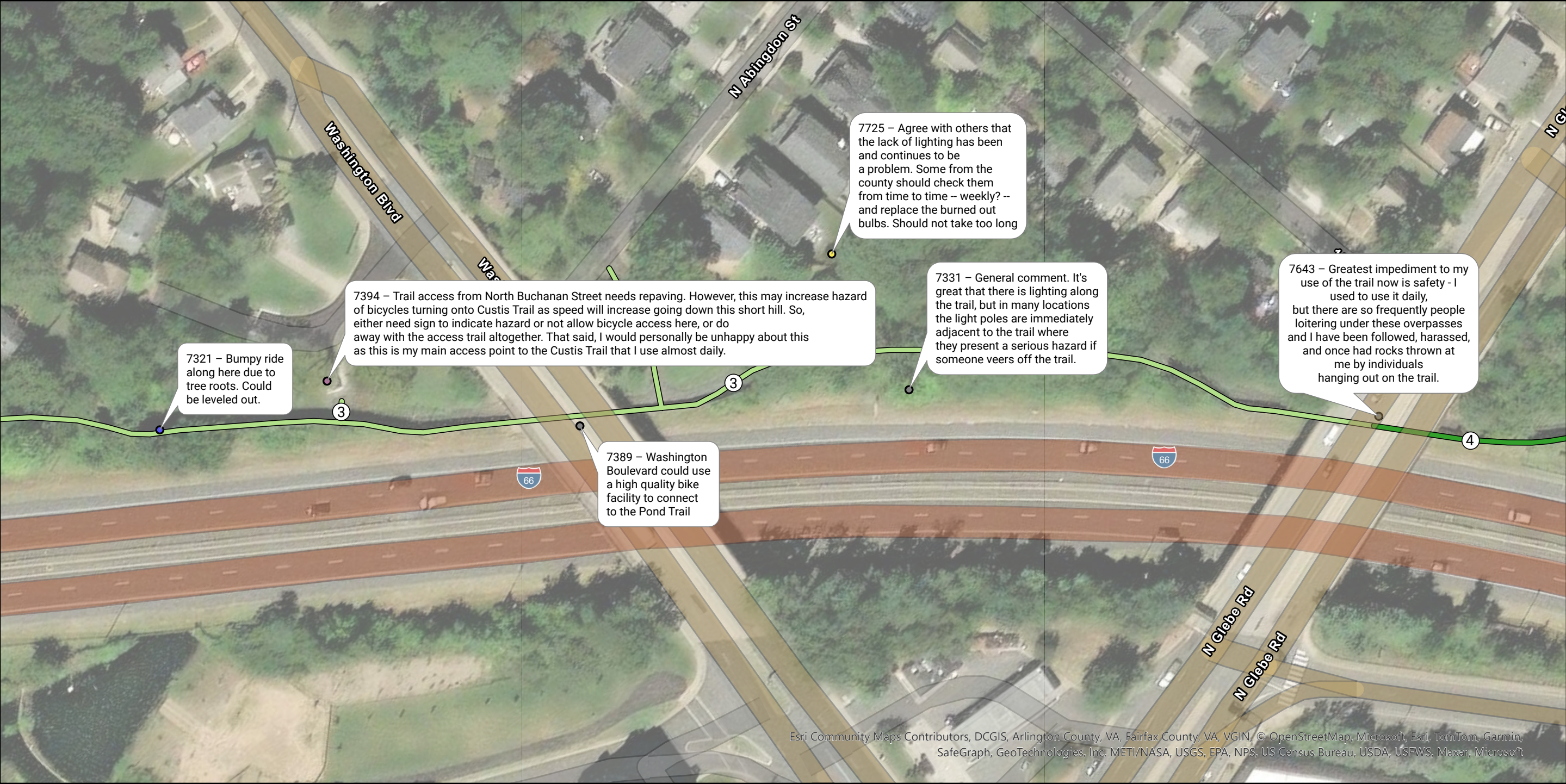
- 5 - Cherry Valley Park
- 6 - Thrifton Hill Park
- 7 - Spout Run
- 8 - North Highlands
- 9 - Rosslyn

Issue Type

- Curb Ramp
- Drainage/Ponding
- Dropoff/Sewer Grates
- Fixed Object

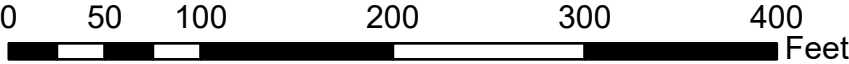
- Lighting
- Other Amenity
- Pavement Condition
- Signage/Wayfinding
- Steep Slope
- Trail Width

- Tree/Rooting
- Visibility/Blind Spots
- Other



Esri Community Maps Contributors, DCGIS, Arlington County, VA, Fairfax County, VA, VGIN, © OpenStreetMap, Microsoft, Esri, TomTom, Garmin, SafeGraph, GeoTechnologies, Inc, METI/NASA, USGS, EPA, NPS, US Census Bureau, USDA, USFWS, Maxar, Microsoft

OIPI GAP-TA Custis Trail
Public Comment Map Series
Page 8 of 24



Segment

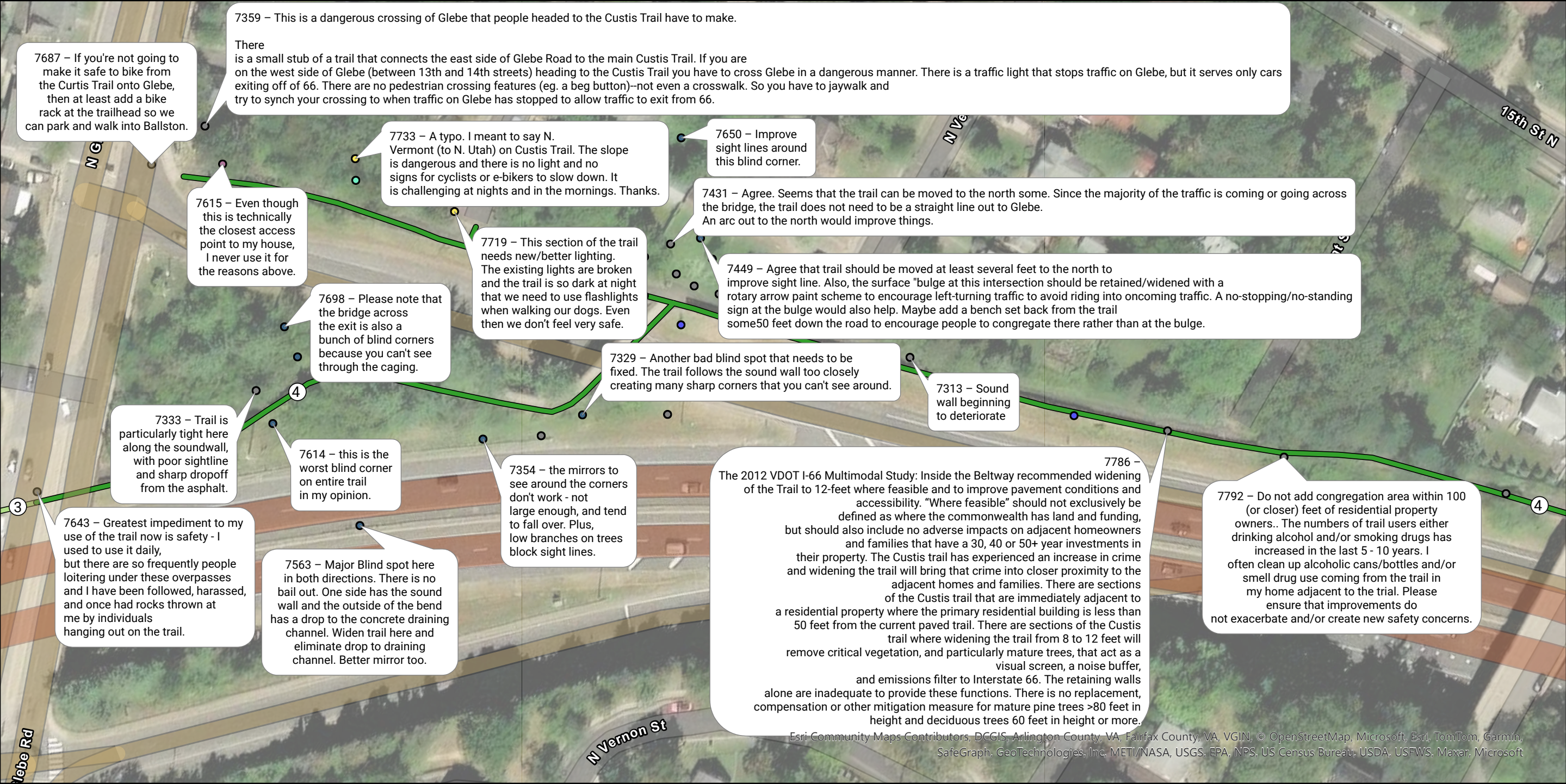
- 1 - Bon Air Park
- 2 - Bluemont
- 3 - Waycroft-Woodlawn
- 4 - Waverly Hills

- 5 - Cherry Valley Park
- 6 - Thrifton Hill Park
- 7 - Spout Run
- 8 - North Highlands
- 9 - Rosslyn

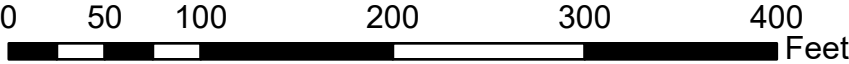
Issue Type

- Curb Ramp
- Drainage/Ponding
- Dropoff/Sewer Grates
- Fixed Object

- Lighting
- Other Amenity
- Pavement Condition
- Signage/Wayfinding
- Steep Slope
- Trail Width
- Tree/Rooting
- Visibility/Blind Spots
- Other



OIPI GAP-TA Custis Trail
Public Comment Map Series
Page 9 of 24



Segment

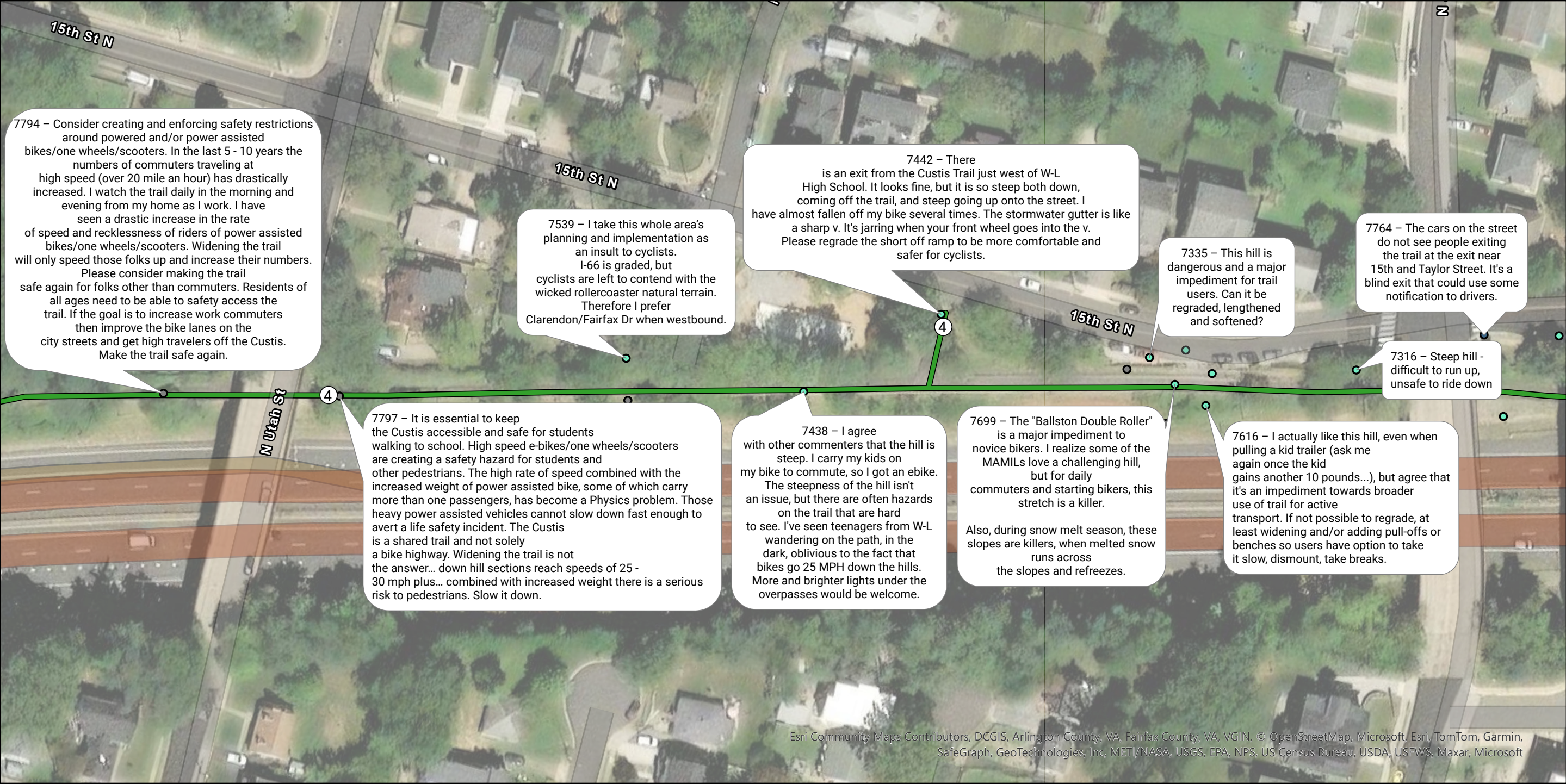
- 1 - Bon Air Park
- 2 - Bluemont
- 3 - Waycroft-Woodlawn
- 4 - Waverly Hills

- 5 - Cherry Valley Park
- 6 - Thrifton Hill Park
- 7 - Spout Run
- 8 - North Highlands
- 9 - Rosslyn

Issue Type

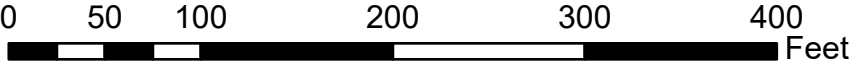
- Curb Ramp
- Drainage/Ponding
- Dropoff/Sewer Grates
- Fixed Object

- Lighting
- Other Amenity
- Pavement Condition
- Signage/Wayfinding
- Steep Slope
- Trail Width
- Tree/Rooting
- Visibility/Blind Spots
- Other



Esri Community Maps Contributors, DCGIS, Arlington County, VA, Fairfax County, VA, VGIN, © OpenStreetMap, Microsoft, Esri, TomTom, Garmin, SafeGraph, GeoTechnologies, Inc, METI/NASA, USGS, EPA, NPS, US Census Bureau, USDA, USFWS, Maxar, Microsoft

OIPI GAP-TA Custis Trail
Public Comment Map Series
Page 10 of 24



Segment

- 1 - Bon Air Park
- 2 - Bluemont
- 3 - Waycroft-Woodlawn
- 4 - Waverly Hills

- 5 - Cherry Valley Park
- 6 - Thrifton Hill Park
- 7 - Spout Run
- 8 - North Highlands
- 9 - Rosslyn

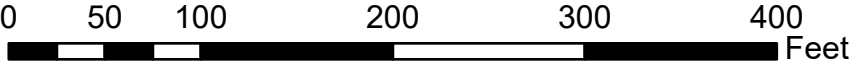
Issue Type

- Curb Ramp
- Drainage/Ponding
- Dropoff/Sewer Grates
- Fixed Object
- Lighting
- Other Amenity
- Pavement Condition
- Signage/Wayfinding
- Steep Slope
- Trail Width
- Tree/Rooting
- Visibility/Blind Spots
- Other



Esri Community Maps Contributors, DCGIS, Arlington County, VA, Fairfax County, VA, VGIN, © OpenStreetMap, Microsoft, Esri, TomTom, Garmin, SafeGraph, GeoTechnologies, Inc, METI/NASA, USGS, EPA, NPS, US Census Bureau, USDA, USFWS, Maxar, Microsoft

OIPI GAP-TA Custis Trail
Public Comment Map Series
Page 11 of 24



Segment

- 1 - Bon Air Park
- 2 - Bluemont
- 3 - Waycroft-Woodlawn
- 4 - Waverly Hills

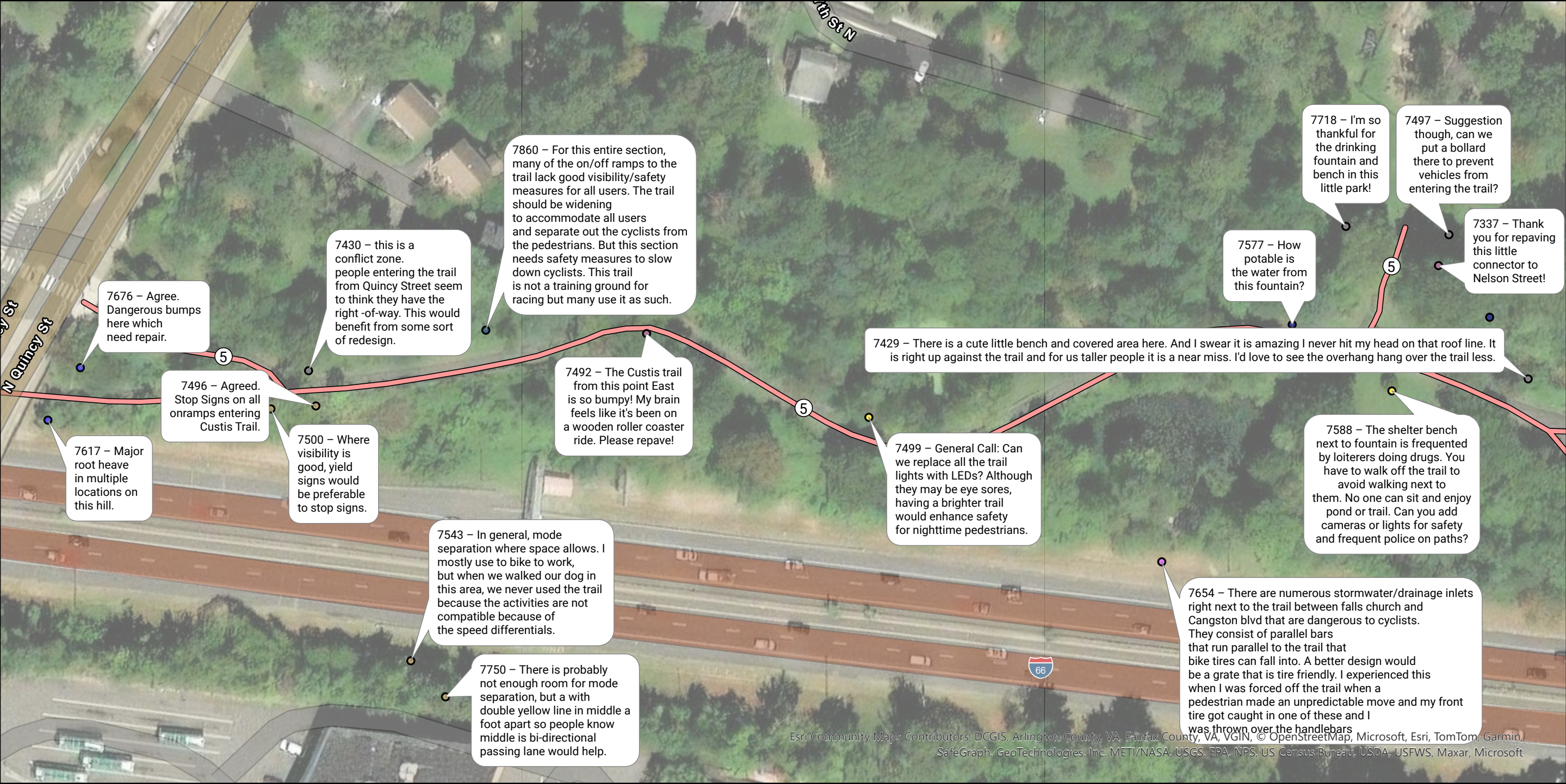
- 5 - Cherry Valley Park
- 6 - Thrifton Hill Park
- 7 - Spout Run
- 8 - North Highlands
- 9 - Rosslyn

Issue Type

- Curb Ramp
- Drainage/Ponding
- Dropoff/Sewer Grates
- Fixed Object

- Lighting
- Other Amenity
- Pavement Condition
- Signage/Wayfinding
- Steep Slope
- Trail Width

- Tree/Rooting
- Visibility/Blind Spots
- Other

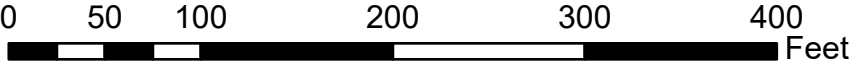


Esri Community Maps Contributors, DCGIS, Arlington County, VA, Fairfax County, VA, VGIN, © OpenStreetMap, Microsoft, Esri, TomTom, Garmin, SafeGraph, GeoTechnologies, Inc. METI/NASA, USGS, EPA, NPS, US Census Bureau, USDA, USFWS, Maxar, Microsoft

OIPI GAP-TA Custis Trail

Public Comment Map Series

Page 12 of 24



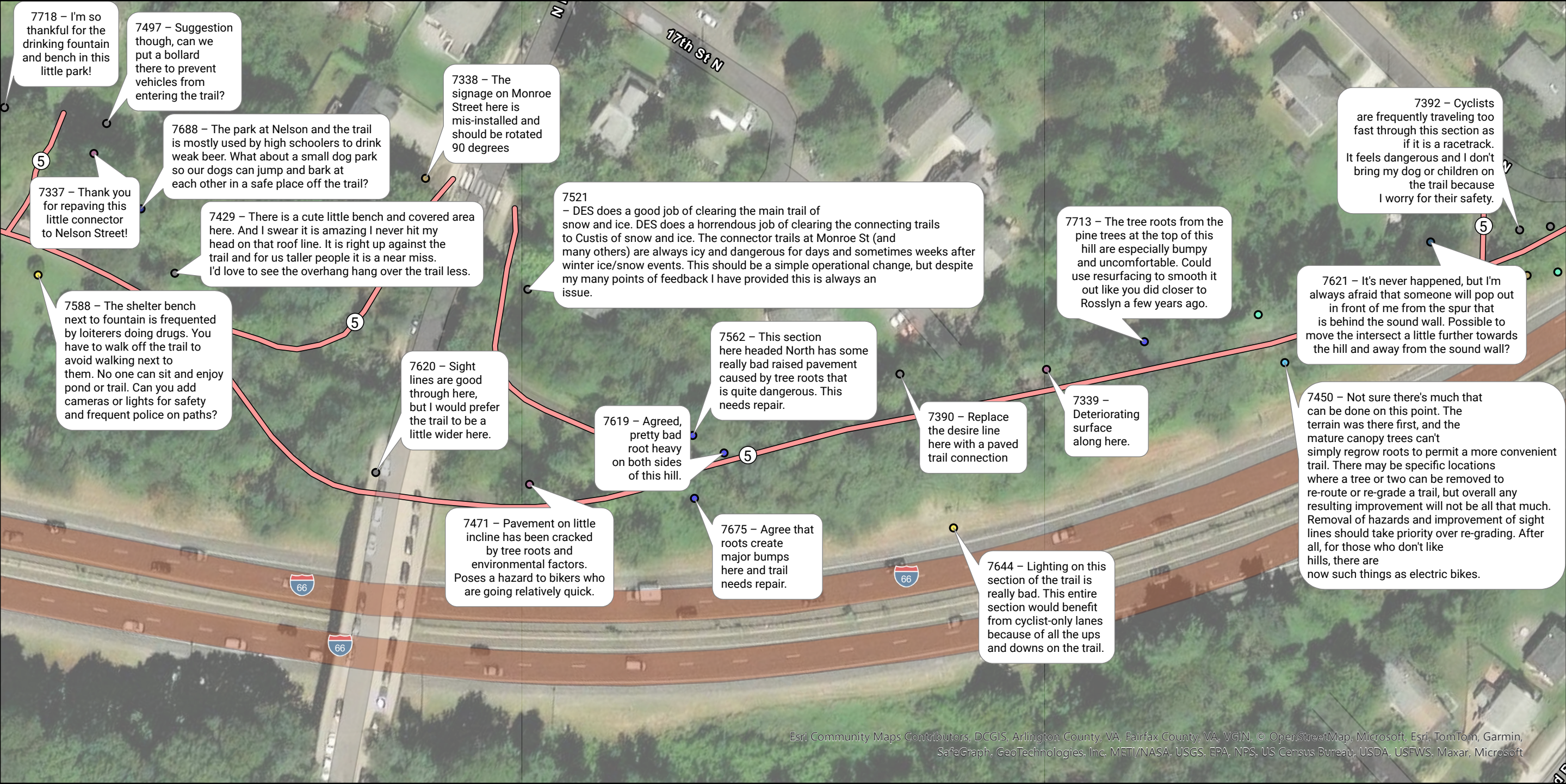
Segment

- 1 - Bon Air Park
- 2 - Bluemont
- 3 - Waycroft-Woodlawn
- 4 - Waverly Hills

- 5 - Cherry Valley Park
- 6 - Thrifton Hill Park
- 7 - Spout Run
- 8 - North Highlands
- 9 - Rosslyn

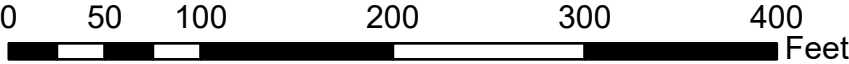
Issue Type

- Curb Ramp
- Drainage/Ponding
- Dropoff/Sewer Grates
- Fixed Object
- Lighting
- Other Amenity
- Pavement Condition
- Signage/Wayfinding
- Steep Slope
- Trail Width
- Tree/Rooting
- Visibility/Blind Spots
- Other



Esri Community Maps Contributors, DCGIS, Arlington County, VA, Fairfax County, VA, VGIN, © OpenStreetMap, Microsoft, Esri, TomTom, Garmin, SafeGraph, GeoTechnologies, Inc. METI/NASA, USGS, EPA, NPS, US Census Bureau, USDA, USFWS, Maxar, Microsoft

OIPI GAP-TA Custis Trail
Public Comment Map Series
Page 13 of 24



Segment

- 1 - Bon Air Park
- 2 - Bluemont
- 3 - Waycroft-Woodlawn
- 4 - Waverly Hills

- 5 - Cherry Valley Park
- 6 - Thrifton Hill Park
- 7 - Spout Run
- 8 - North Highlands
- 9 - Rosslyn

Issue Type

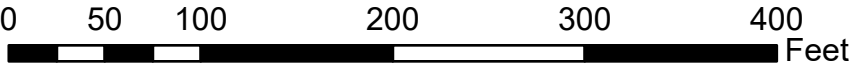
- Curb Ramp
- Drainage/Ponding
- Dropoff/Sewer Grates
- Fixed Object

- Lighting
- Other Amenity
- Pavement Condition
- Signage/Wayfinding
- Steep Slope
- Trail Width

- Tree/Rooting
- Visibility/Blind Spots
- Other



OIPI GAP-TA Custis Trail
Public Comment Map Series
Page 14 of 24

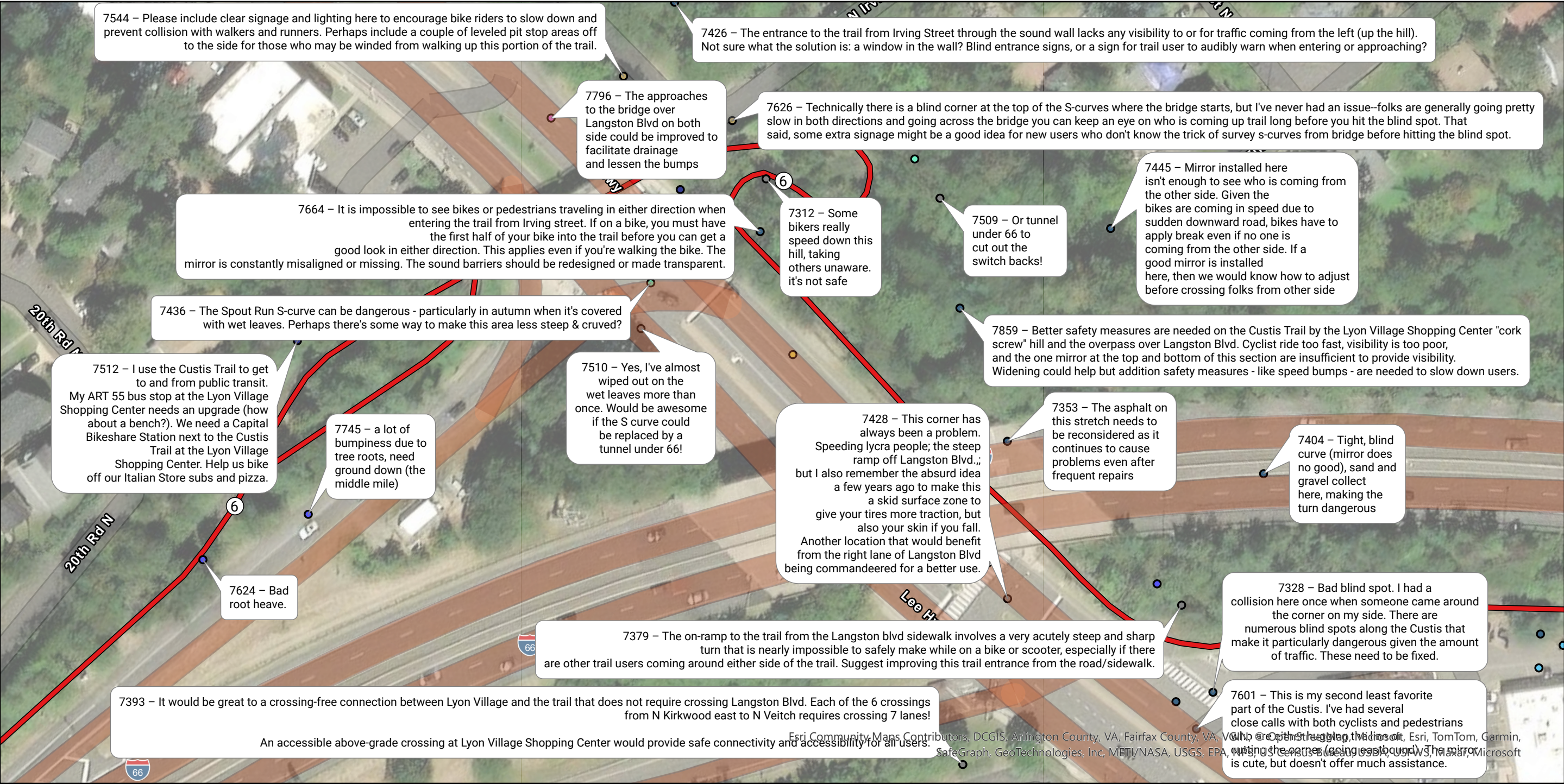


Segment

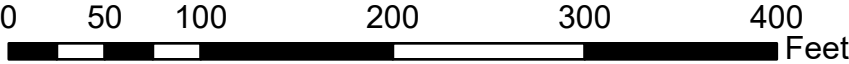
- | | |
|-----------------------|------------------------|
| 1 - Bon Air Park | 5 - Cherry Valley Park |
| 2 - Bluemont | 6 - Thrifton Hill Park |
| 3 - Waycroft-Woodlawn | 7 - Spout Run |
| 4 - Waverly Hills | 8 - North Highlands |
| | 9 - Rosslyn |

Issue Type

- | | | |
|------------------------|----------------------|--------------------------|
| ● Curb Ramp | ● Lighting | ● Tree/Rooting |
| ● Drainage/Ponding | ● Other Amenity | ● Visibility/Blind Spots |
| ● Dropoff/Sewer Grates | ● Pavement Condition | ● Other |
| ● Fixed Object | ● Signage/Wayfinding | |
| | ● Steep Slope | |
| | ● Trail Width | |



OIPI GAP-TA Custis Trail
Public Comment Map Series
Page 15 of 24

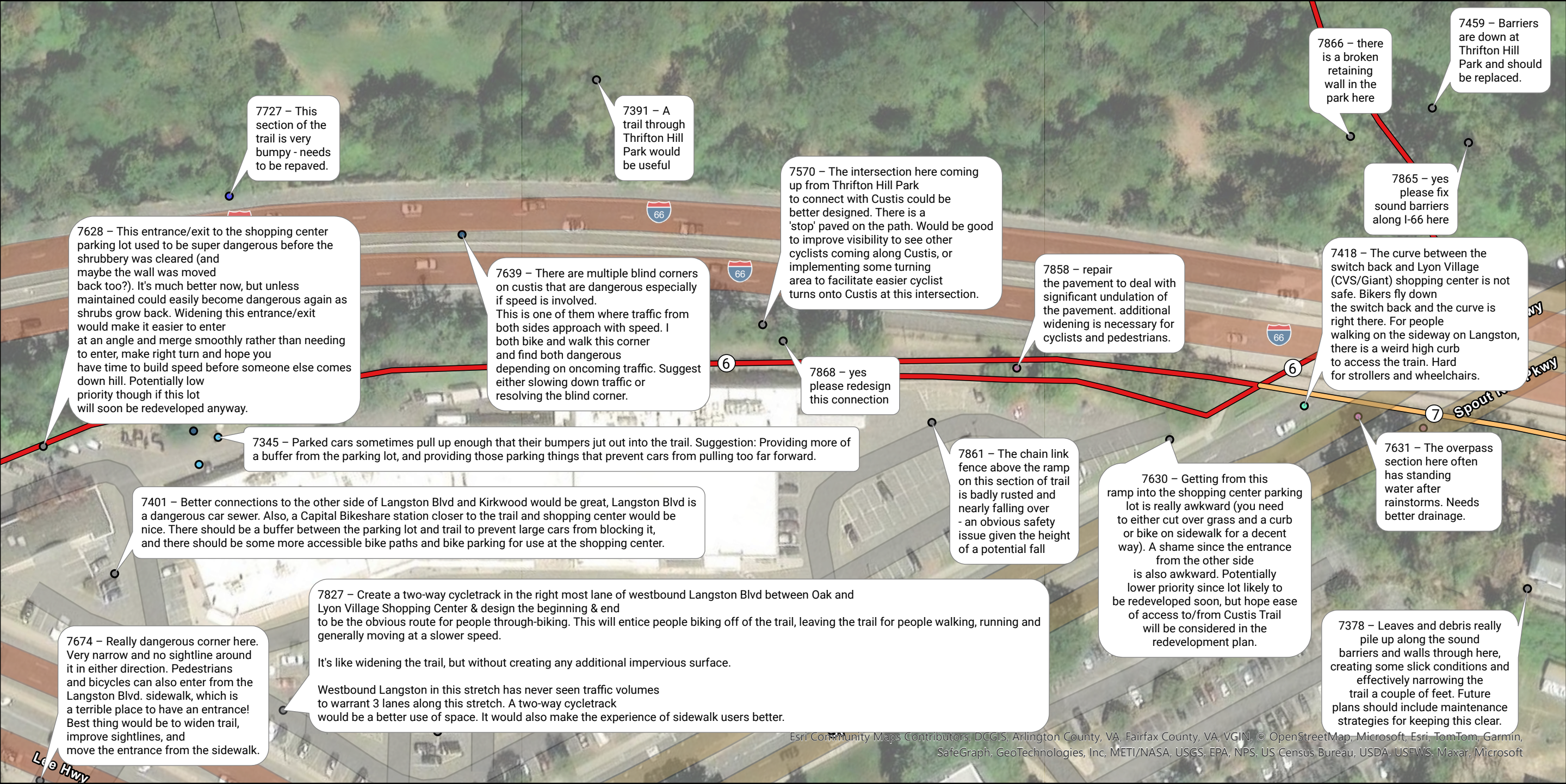


Segment

- | | |
|-----------------------|------------------------|
| 1 - Bon Air Park | 5 - Cherry Valley Park |
| 2 - Bluemont | 6 - Thrifton Hill Park |
| 3 - Waycroft-Woodlawn | 7 - Spout Run |
| 4 - Waverly Hills | 8 - North Highlands |
| | 9 - Rosslyn |

Issue Type

- | | | |
|------------------------|----------------------|--------------------------|
| ● Curb Ramp | ● Lighting | ● Tree/Rooting |
| ● Drainage/Ponding | ● Other Amenity | ● Visibility/Blind Spots |
| ● Dropoff/Sewer Grates | ● Pavement Condition | ● Other |
| ● Fixed Object | ● Signage/Wayfinding | |
| | ● Steep Slope | |
| | ● Trail Width | |

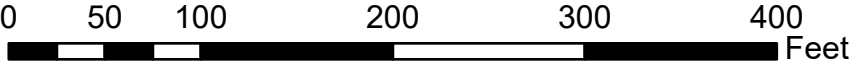


Esri Community Maps Contributors, DCGIS, Arlington County, VA, Fairfax County, VA, VGIN, © OpenStreetMap, Microsoft, Esri, TomTom, Garmin, SafeGraph, GeoTechnologies, Inc, METI/NASA, USGS, EPA, NPS, US Census Bureau, USDA, USFWS, Maxar, Microsoft

OIPI GAP-TA Custis Trail

Public Comment Map Series

Page 16 of 24



Segment

- 1 - Bon Air Park
- 2 - Bluemont
- 3 - Waycroft-Woodlawn
- 4 - Waverly Hills

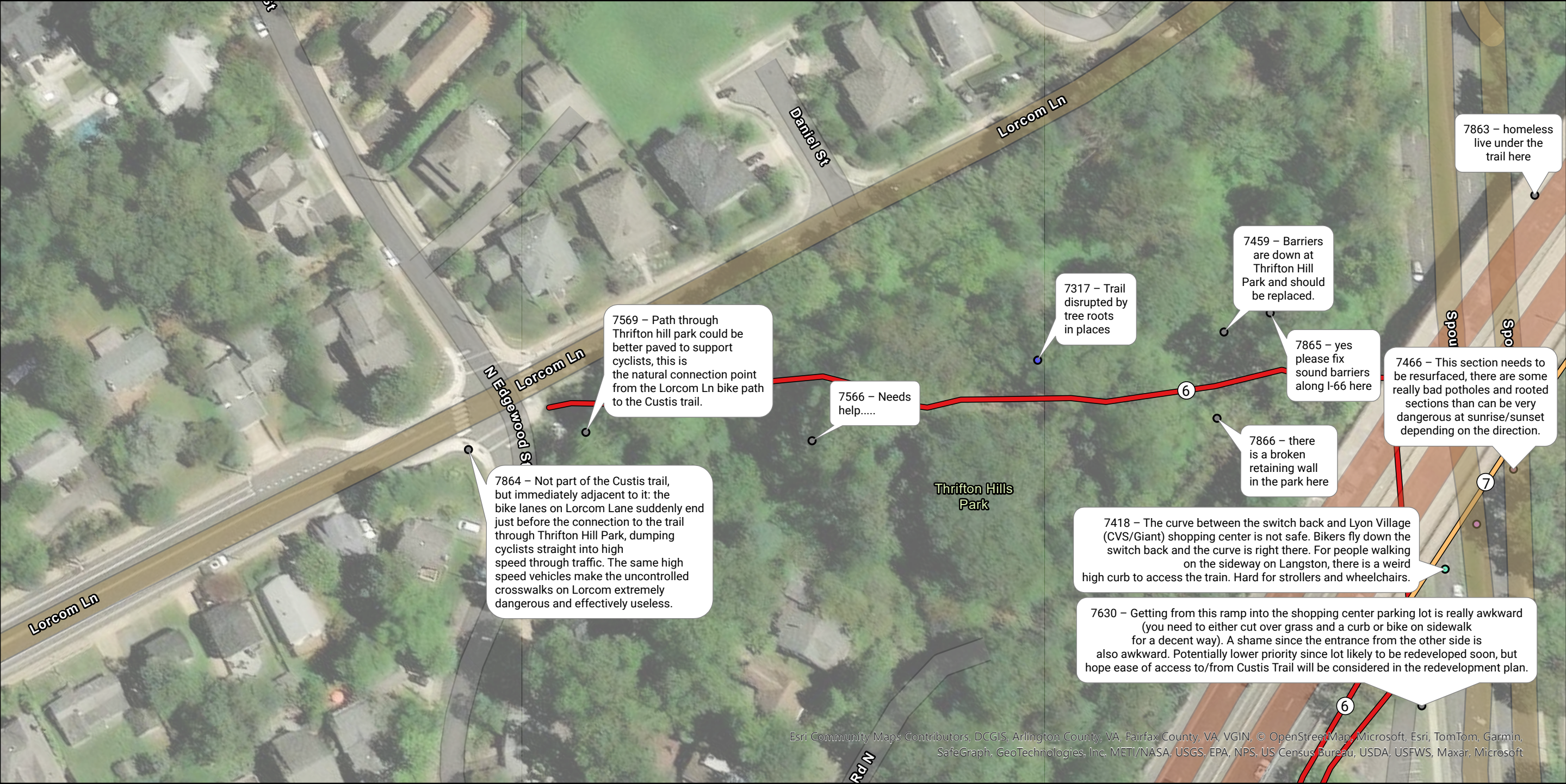
- 5 - Cherry Valley Park
- 6 - Thrifton Hill Park
- 7 - Spout Run
- 8 - North Highlands
- 9 - Rosslyn

Issue Type

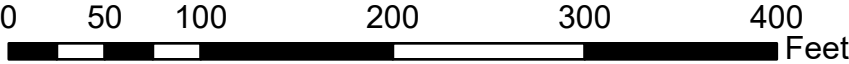
- Curb Ramp
- Drainage/Ponding
- Dropoff/Sewer Grates
- Fixed Object

- Lighting
- Other Amenity
- Pavement Condition
- Signage/Wayfinding
- Steep Slope
- Trail Width

- Tree/Rooting
- Visibility/Blind Spots
- Other



OIPI GAP-TA Custis Trail
Public Comment Map Series
Page 17 of 24



Segment

- 1 - Bon Air Park
- 2 - Bluemont
- 3 - Waycroft-Woodlawn
- 4 - Waverly Hills

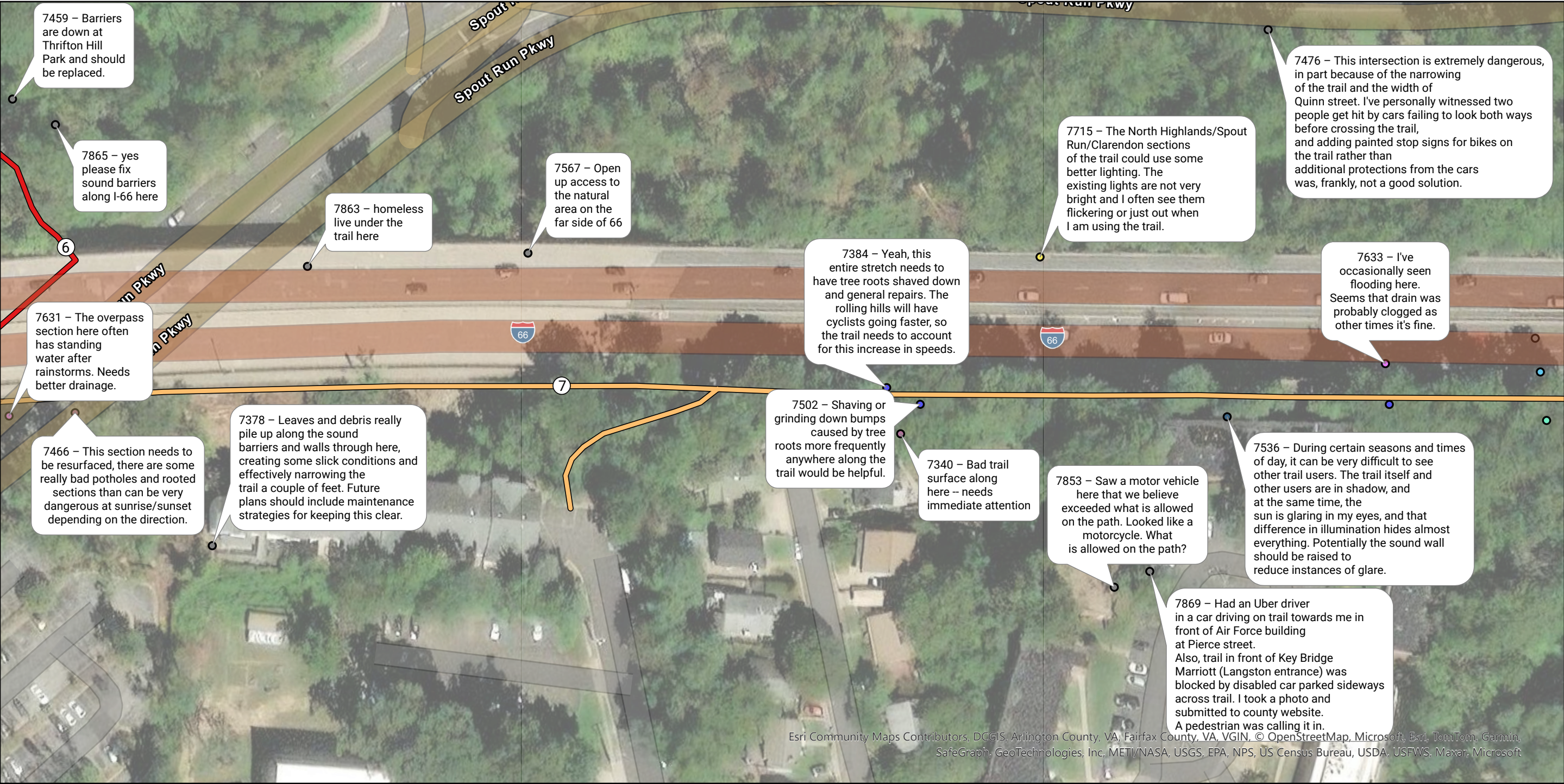
- 5 - Cherry Valley Park
- 6 - Thrifton Hill Park
- 7 - Spout Run
- 8 - North Highlands
- 9 - Rosslyn

Issue Type

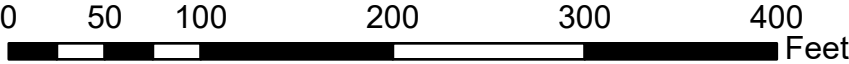
- Curb Ramp
- Drainage/Ponding
- Dropoff/Sewer Grates
- Fixed Object

- Lighting
- Other Amenity
- Pavement Condition
- Signage/Wayfinding
- Steep Slope
- Trail Width

- Tree/Rooting
- Visibility/Blind Spots
- Other



OIPI GAP-TA Custis Trail
Public Comment Map Series
Page 18 of 24



Segment

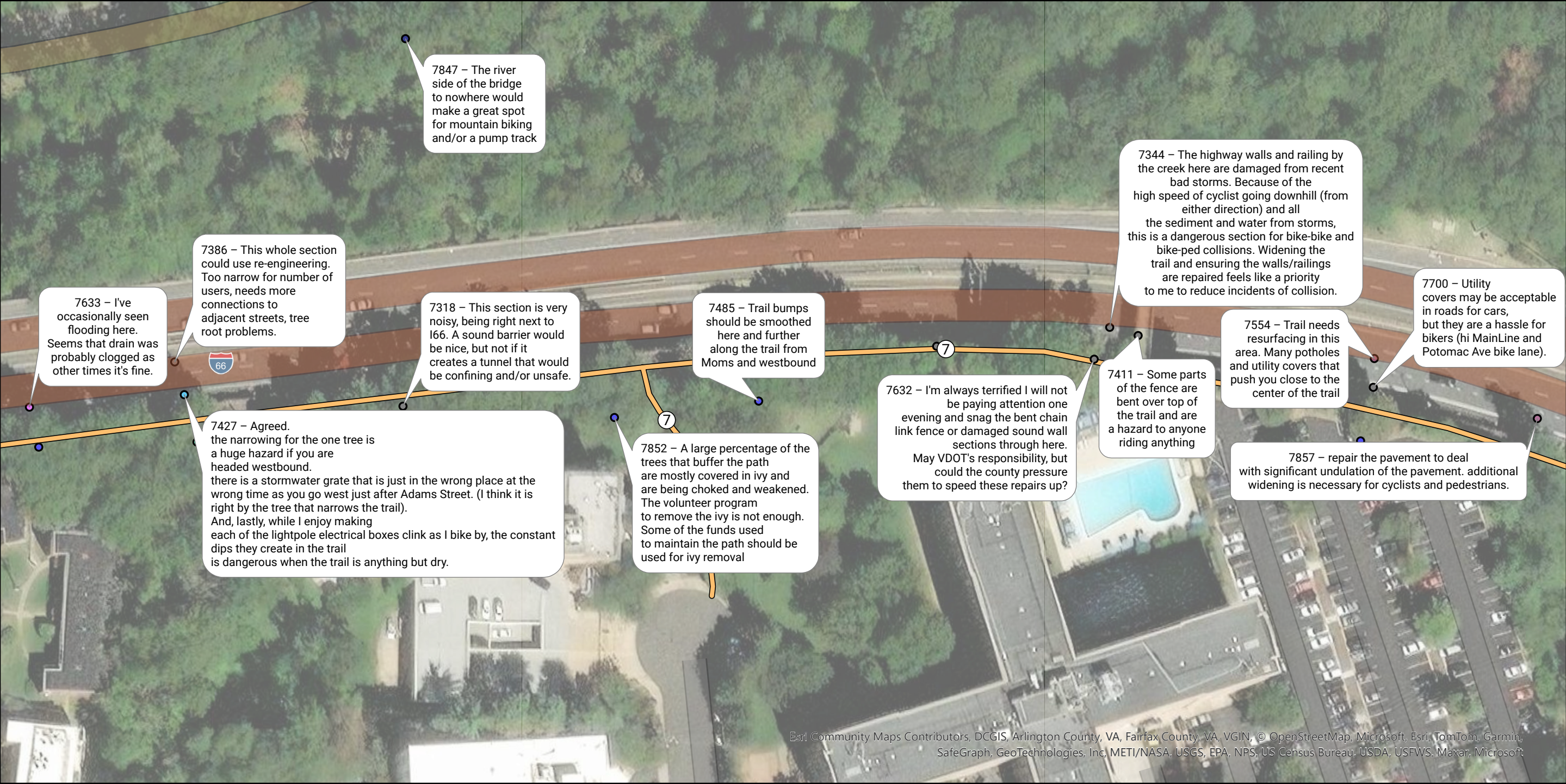
- 1 - Bon Air Park
- 2 - Bluemont
- 3 - Waycroft-Woodlawn
- 4 - Waverly Hills

- 5 - Cherry Valley Park
- 6 - Thrifton Hill Park
- 7 - Spout Run
- 8 - North Highlands
- 9 - Rosslyn

Issue Type

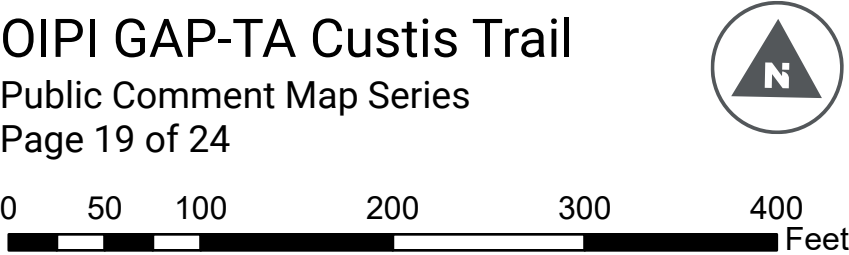
- Curb Ramp
- Drainage/Ponding
- Dropoff/Sewer Grates
- Fixed Object

- Lighting
- Other Amenity
- Pavement Condition
- Signage/Wayfinding
- Steep Slope
- Trail Width
- Tree/Rooting
- Visibility/Blind Spots
- Other



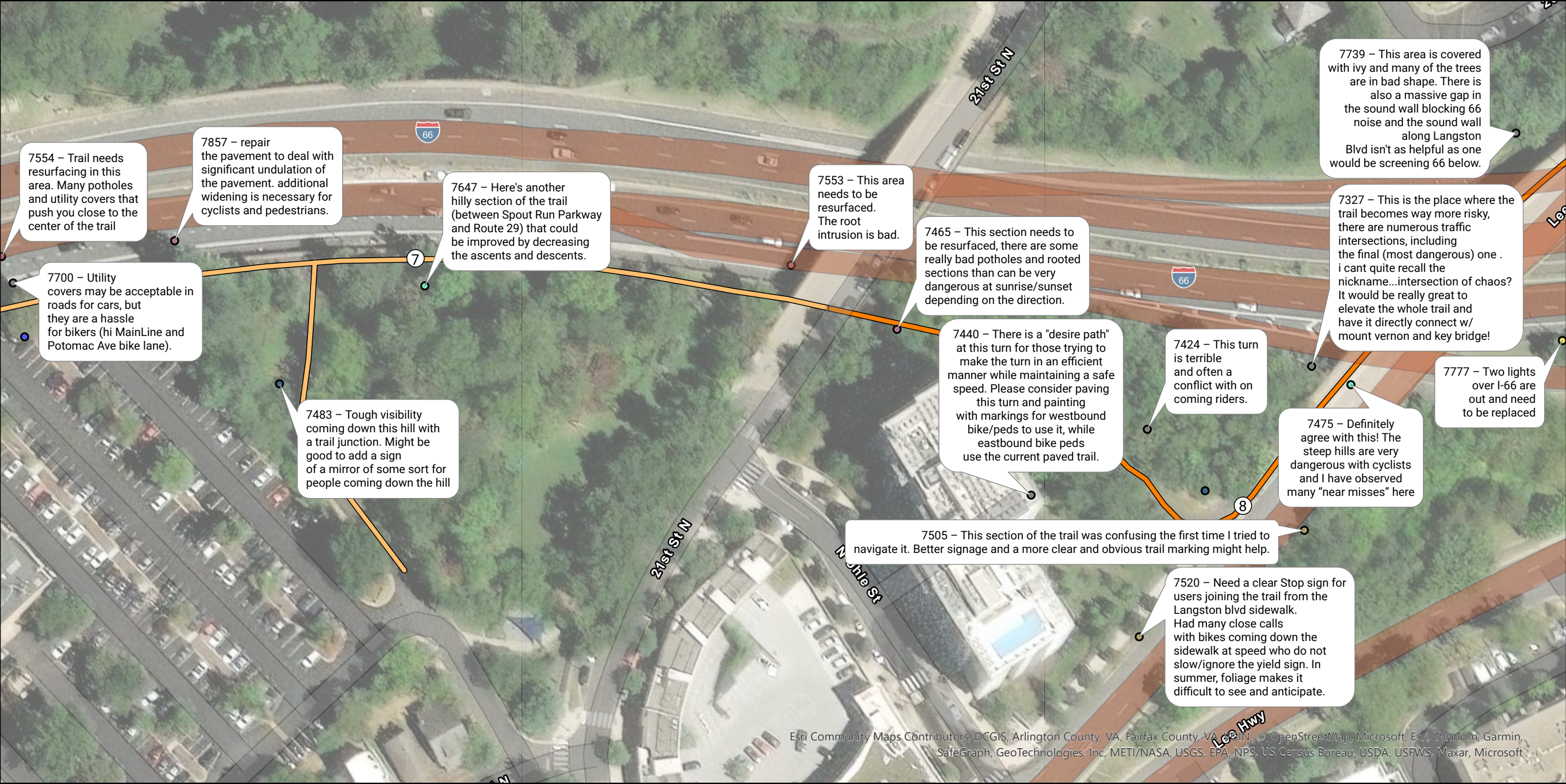
Esri Community Maps Contributors, DCGIS, Arlington County, VA, Fairfax County, VA, VGIN, © OpenStreetMap, Microsoft, Esri, TomTom, Garmin, SafeGraph, GeoTechnologies, Inc, METI/NASA, USGS, EPA, NPS, US Census Bureau, USDA, USFWS, Maxar, Microsoft

OIPI GAP-TA Custis Trail
Public Comment Map Series
Page 19 of 24



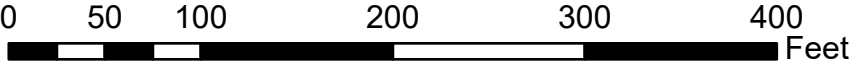
- Segment**
- 1 - Bon Air Park
 - 2 - Bluemont
 - 3 - Waycroft-Woodlawn
 - 4 - Waverly Hills
 - 5 - Cherry Valley Park
 - 6 - Thrifton Hill Park
 - 7 - Spout Run
 - 8 - North Highlands
 - 9 - Rosslyn

- Issue Type**
- Curb Ramp
 - Drainage/Ponding
 - Dropoff/Sewer Grates
 - Fixed Object
 - Lighting
 - Other Amenity
 - Pavement Condition
 - Signage/Wayfinding
 - Steep Slope
 - Trail Width
 - Tree/Rooting
 - Visibility/Blind Spots
 - Other



Esri Community Maps Contributors, DCGIS, Arlington County, VA, Fairfax County, VA, © OpenStreetMap, Microsoft, Esri, TomTom, Garmin, SafeGraph, GeoTechnologies, Inc, METI/NASA, USGS, EPA, NPS, US Census Bureau, USDA, USFWS, Maxar, Microsoft

OIPI GAP-TA Custis Trail
Public Comment Map Series
Page 20 of 24



Segment

- 1 - Bon Air Park
- 2 - Bluemont
- 3 - Waycroft-Woodlawn
- 4 - Waverly Hills

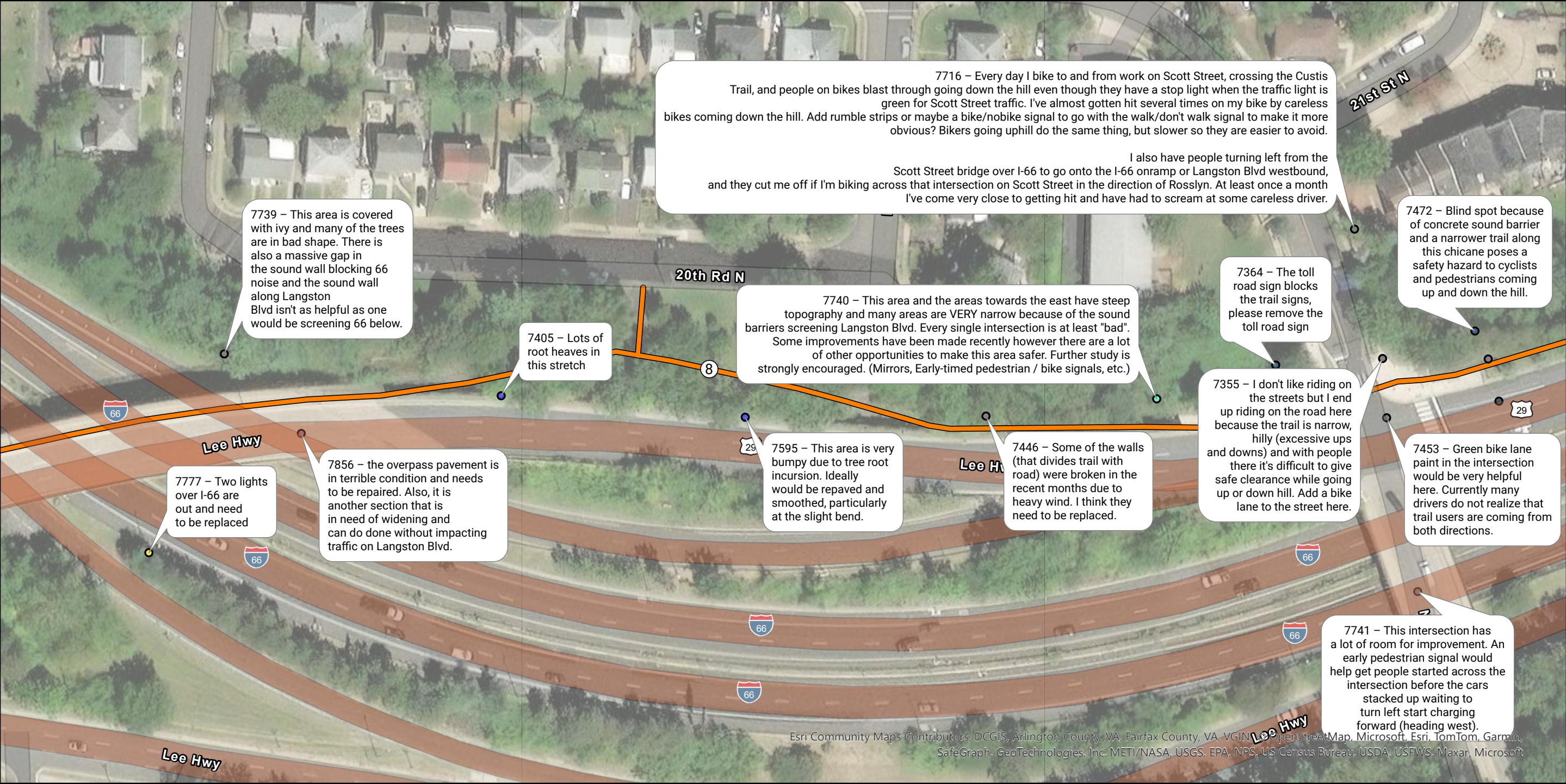
- 5 - Cherry Valley Park
- 6 - Thrifton Hill Park
- 7 - Spout Run
- 8 - North Highlands
- 9 - Rosslyn

Issue Type

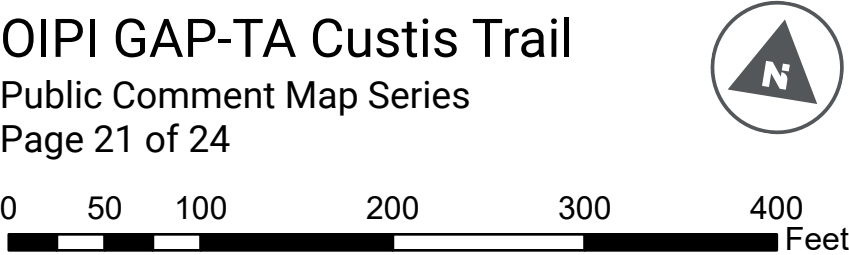
- Curb Ramp
- Drainage/Ponding
- Dropoff/Sewer Grates
- Fixed Object

- Lighting
- Other Amenity
- Pavement Condition
- Signage/Wayfinding
- Steep Slope
- Trail Width

- Tree/Rooting
- Visibility/Blind Spots
- Other



OIPI GAP-TA Custis Trail
Public Comment Map Series
Page 21 of 24



Segment

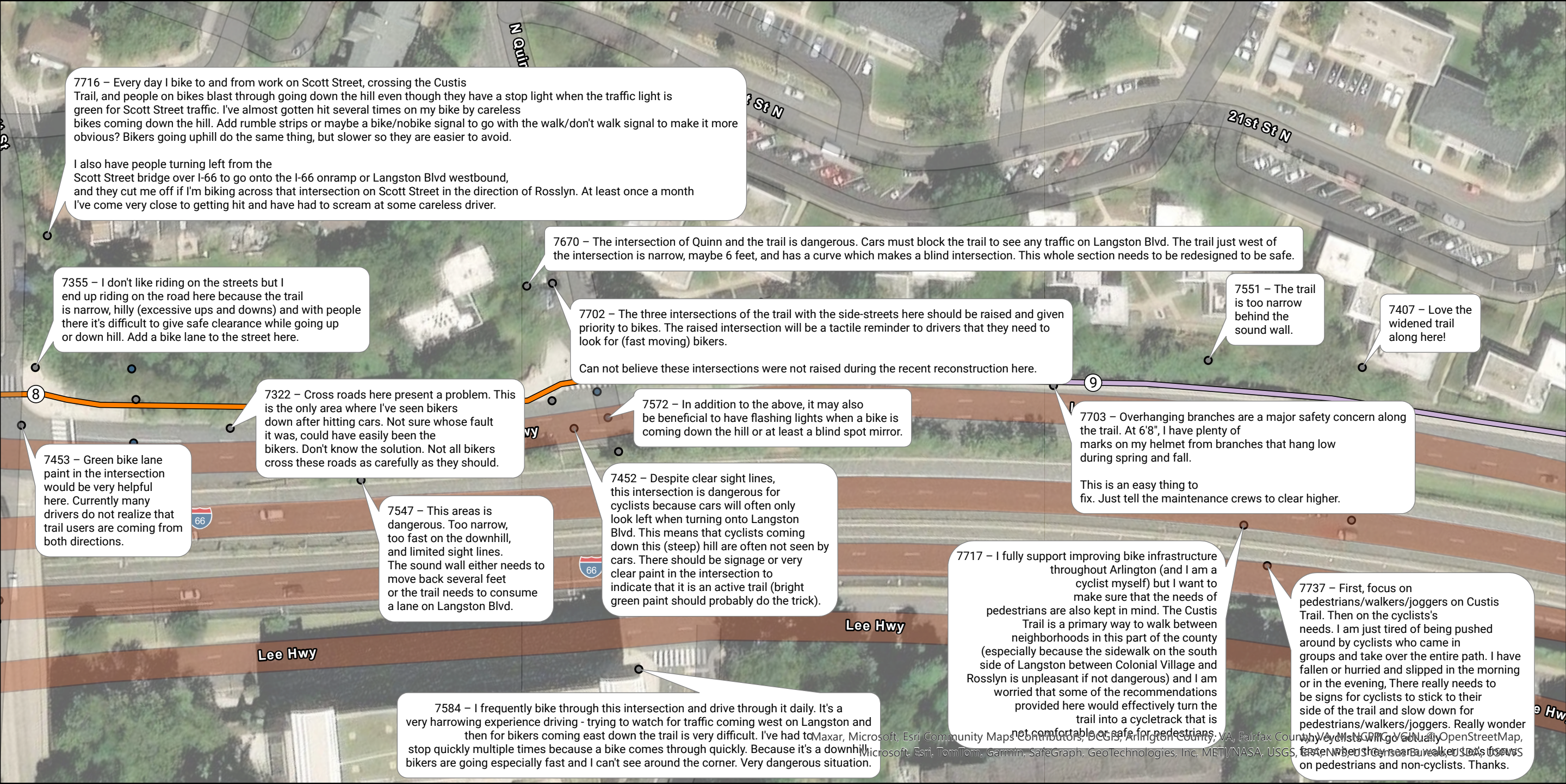
- 1 - Bon Air Park
- 2 - Bluemont
- 3 - Waycroft-Woodlawn
- 4 - Waverly Hills

- 5 - Cherry Valley Park
- 6 - Thrifton Hill Park
- 7 - Spout Run
- 8 - North Highlands
- 9 - Rosslyn

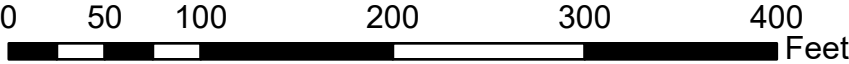
Issue Type

- Curb Ramp
- Drainage/Ponding
- Dropoff/Sewer Grates
- Fixed Object

- Lighting
- Other Amenity
- Pavement Condition
- Signage/Wayfinding
- Steep Slope
- Trail Width
- Tree/Rooting
- Visibility/Blind Spots
- Other



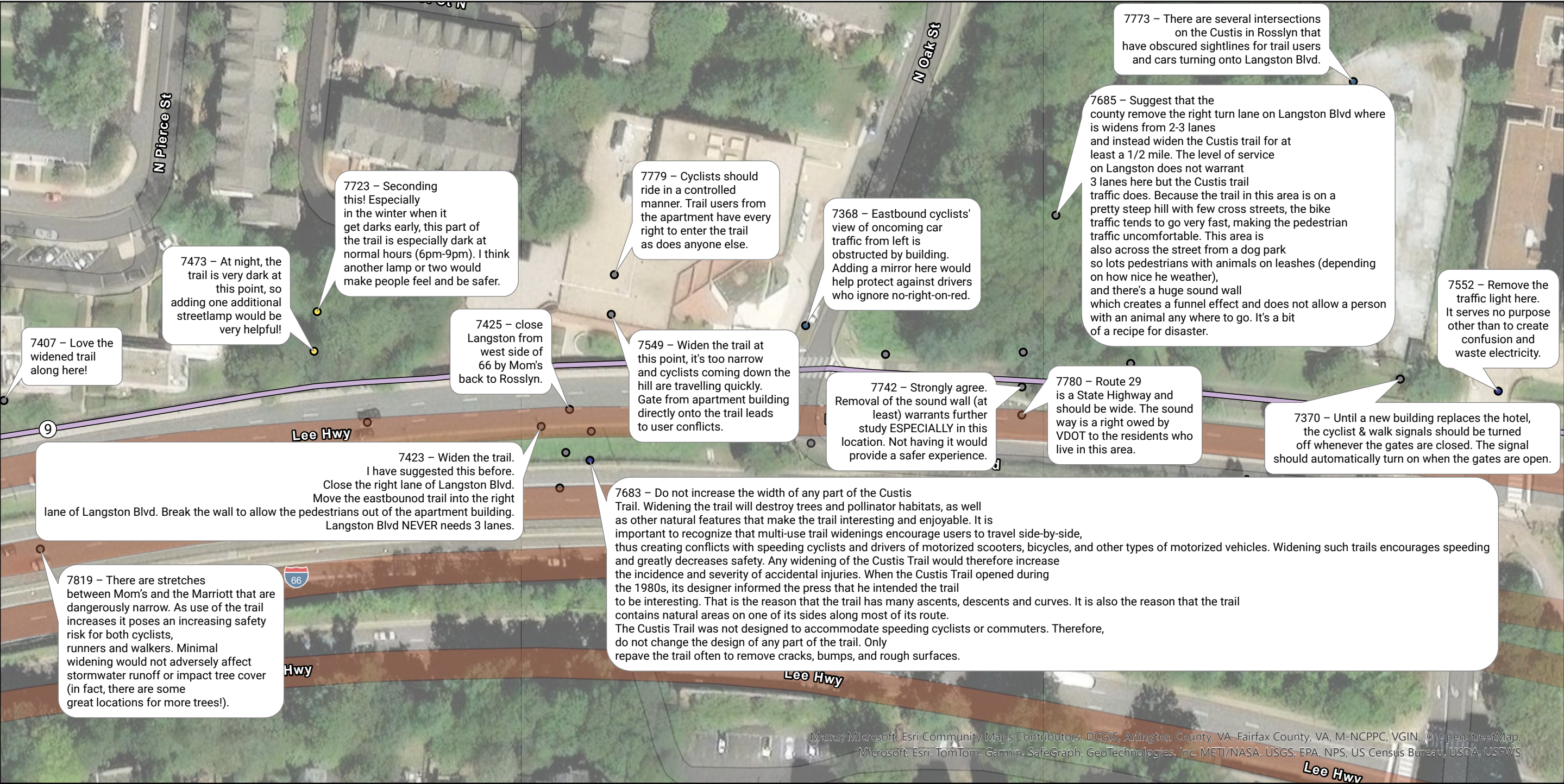
OIPI GAP-TA Custis Trail
Public Comment Map Series
Page 22 of 24



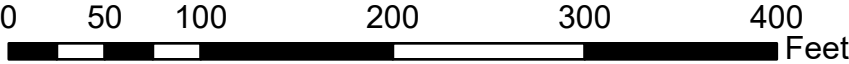
- Segment**
- 1 - Bon Air Park
 - 2 - Bluemont
 - 3 - Waycroft-Woodlawn
 - 4 - Waverly Hills
 - 5 - Cherry Valley Park
 - 6 - Thrifton Hill Park
 - 7 - Spout Run
 - 8 - North Highlands
 - 9 - Rosslyn

- Issue Type**
- Curb Ramp
 - Drainage/Ponding
 - Dropoff/Sewer Grates
 - Fixed Object
 - Lighting
 - Other Amenity
 - Pavement Condition
 - Signage/Wayfinding
 - Steep Slope
 - Trail Width

- Tree/Rooting
- Visibility/Blind Spots
- Other



OIPI GAP-TA Custis Trail
Public Comment Map Series
Page 23 of 24



Segment

- 1 - Bon Air Park
- 2 - Bluemont
- 3 - Waycroft-Woodlawn
- 4 - Waverly Hills

- 5 - Cherry Valley Park
- 6 - Thrifton Hill Park
- 7 - Spout Run
- 8 - North Highlands
- 9 - Rosslyn

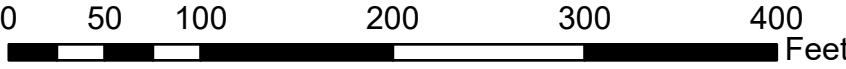

Issue Type

- Curb Ramp
- Drainage/Ponding
- Dropoff/Sewer Grates
- Fixed Object

- Lighting
- Other Amenity
- Pavement Condition
- Signage/Wayfinding
- Steep Slope
- Trail Width
- Tree/Rooting
- Visibility/Blind Spots
- Other



OIPI GAP-TA Custis Trail
Public Comment Map Series
Page 24 of 24



Segment

- 1 - Bon Air Park
- 2 - Bluemont
- 3 - Waycroft-Woodlawn
- 4 - Waverly Hills
- 5 - Cherry Valley Park
- 6 - Thrifton Hill Park
- 7 - Spout Run
- 8 - North Highlands
- 9 - Rosslyn

Issue Type

- Curb Ramp
- Drainage/Ponding
- Dropoff/Sewer Grates
- Fixed Object
- Lighting
- Other Amenity
- Pavement Condition
- Signage/Wayfinding
- Steep Slope
- Trail Width
- Tree/Rooting
- Visibility/Blind Spots
- Other