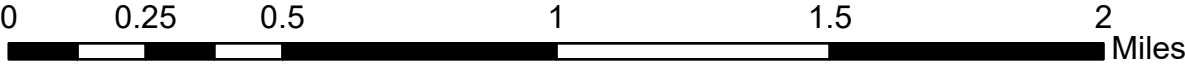


OIPI GAP-TA Custis Trail
Existing Conditions Map Series
Page Number Index

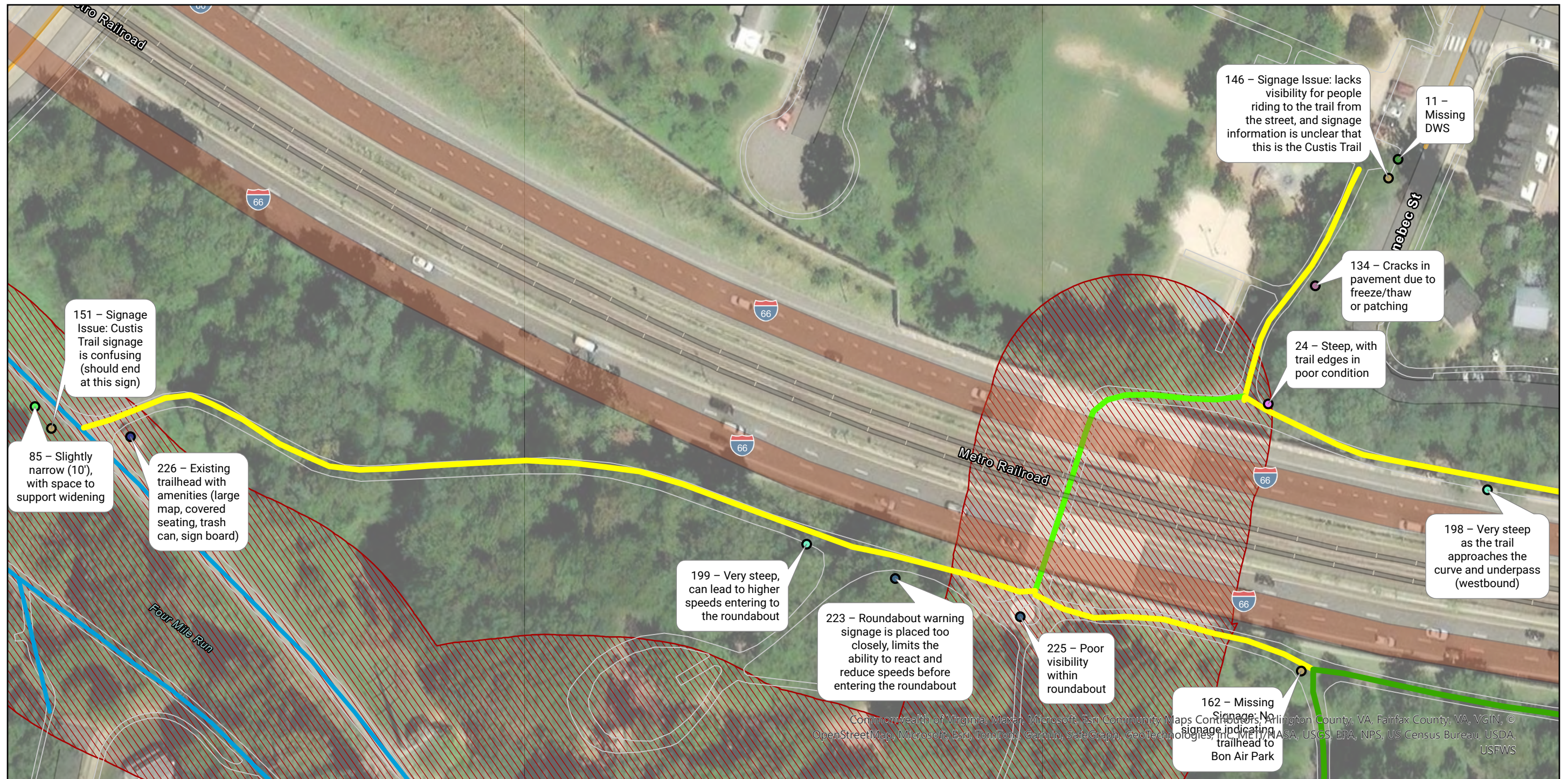


Pavement Condition

- Excellent
- Good
- Fair
- Poor

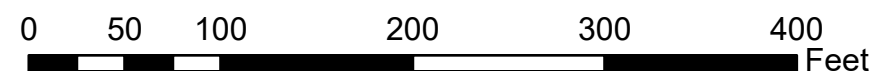
Bicycle Facility Type

- On Street Route
- Off Street Trail
- Planned On Street Route
- Planned Off Street Trail
- Recommended Route



OIPI GAP-TA Custis Trail

Existing Conditions Map Series
Page 1 of 24



Issue Type

- Curb Ramp (1)
- Drainage/Ponding (1)
- Other Amenity (1)
- Pavement Condition (1)
- Signage/Wayfinding (3)

- Steep Slope (2)

- Trail Width (1)
- Visibility/Blind Spots (2)

Resource Protection Areas

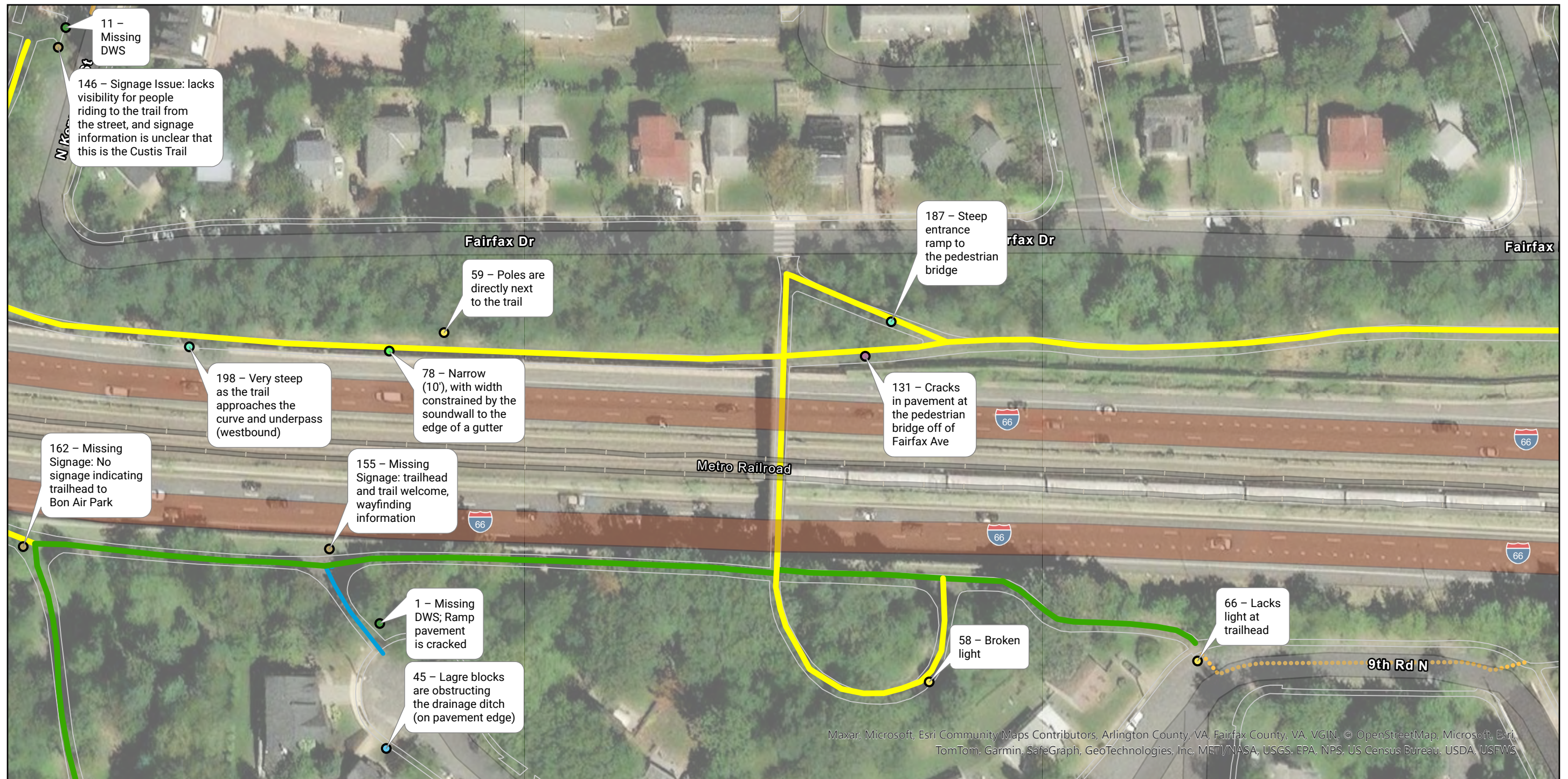
- ▨ Resource Protection Areas

Pavement Condition

- Excellent
- Good
- Fair

Bicycle Facility Type

- On Street Route
- Off Street Trail



OIPI GAP-TA Custis Trail Existing Conditions Map Series Page 2 of 24



0 50 100 200 300 400 Feet

Issue Type

- Curb Ramp (2)
- Fixed Object (1)
- Lighting (3)

Issue Type

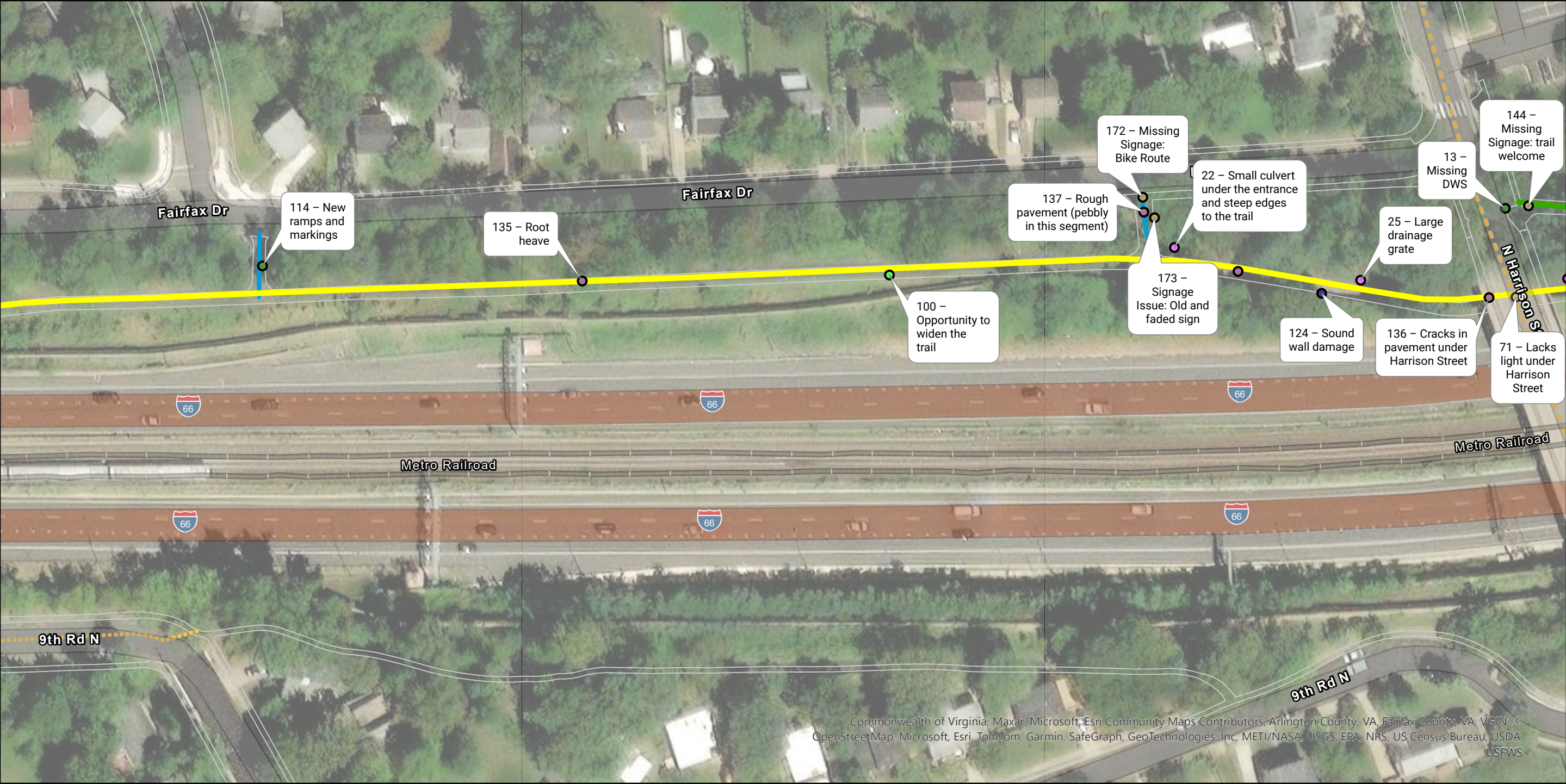
- Pavement Condition (1)
- Signage/Wayfinding (3)
- Steep Slope (2)
- Trail Width (1)

Pavement Condition

- Excellent
- Fair

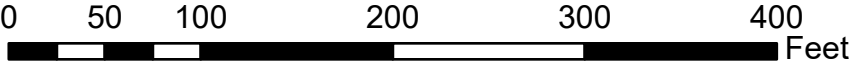
Bicycle Facility Type

- On Street Route
- Off Street Trail
- Recommended Route



Commonwealth of Virginia, Maxar, Microsoft, Esri Community Maps Contributors, Arlington County, VA, Fairfax County, VA, VGIN, © OpenStreetMap, Microsoft, Esri, TomTom, Garmin, SafeGraph, GeoTechnologies, Inc, METI/NASA, USGS, EPA, NPS, US Census Bureau, USDA, USFWS

OIPI GAP-TA Custis Trail
Existing Conditions Map Series
Page 3 of 24



Issue Type

- Curb Ramp (2)
- Drainage/Ponding (3)
- Lighting (1)

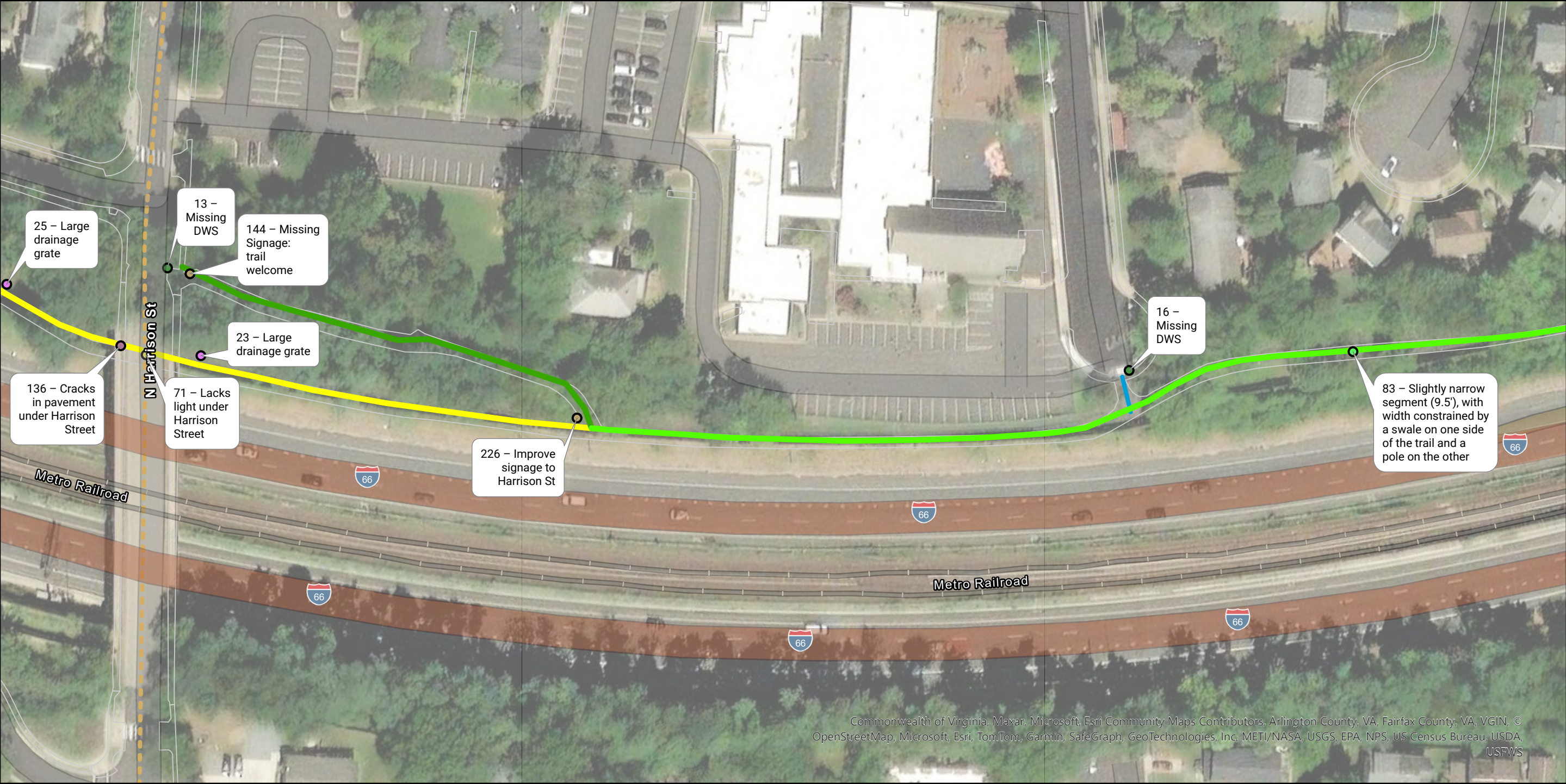
- Other Amenity (1)
- Pavement Condition (4)
- Signage/Wayfinding (3)
- Trail Width (1)

Pavement Condition

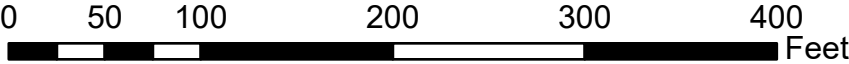
- Excellent
- Fair

Bicycle Facility Type

- Off Street Trail
- Planned On Street Route
- Recommended Route

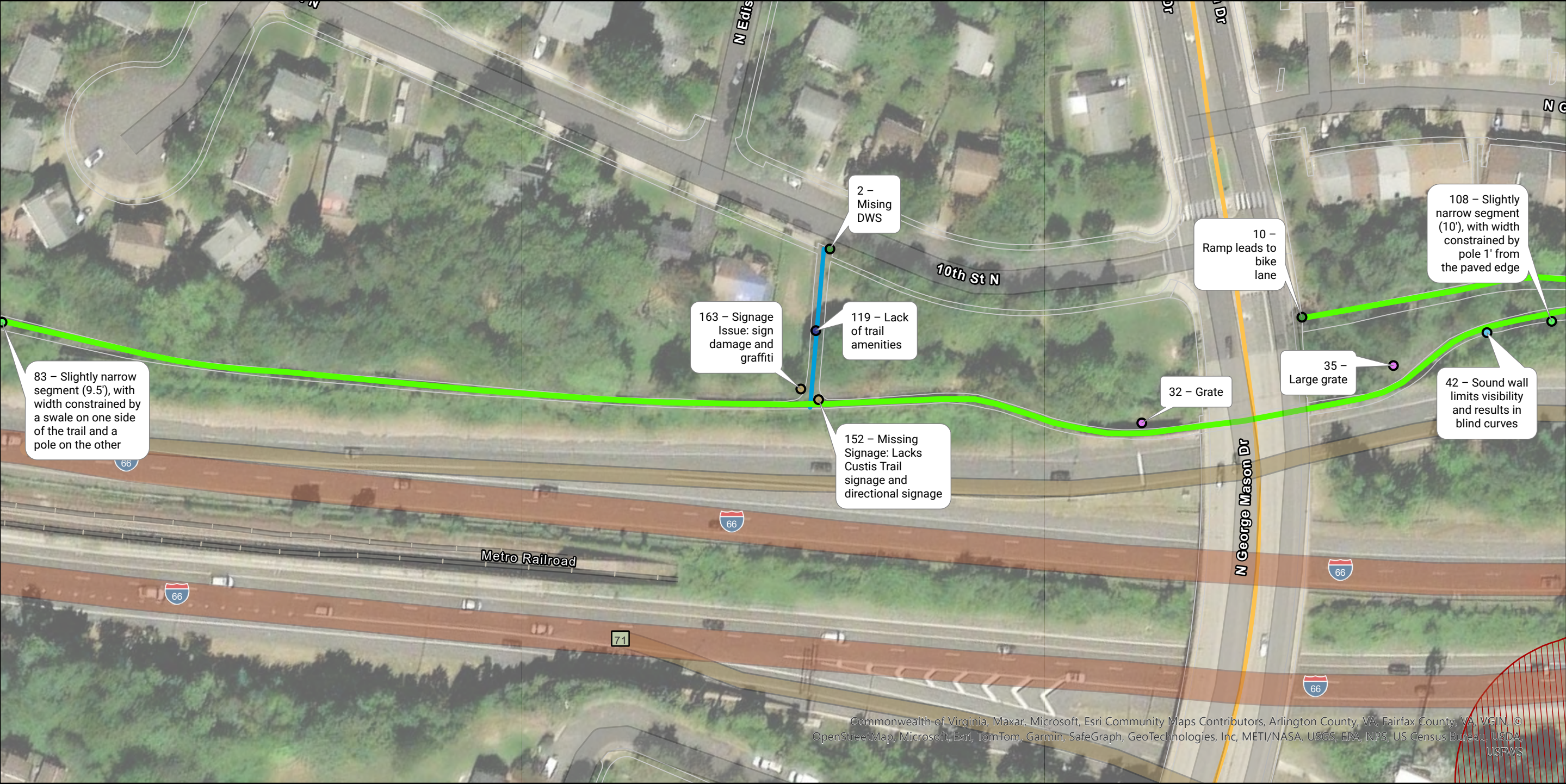


OIPI GAP-TA Custis Trail
Existing Conditions Map Series
Page 4 of 24

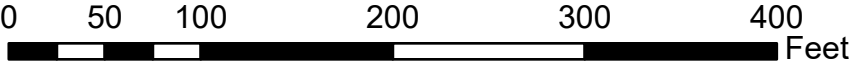


- | | | |
|--------------------------|---------------------------|------------------------------|
| Issue Type | Pavement Condition | Bicycle Facility Type |
| ● Curb Ramp (2) | ● Excellent | — Off Street Trail |
| ● Drainage/Ponding (2) | ● Good | — Planned On Street Route |
| ● Lighting (1) | ● Fair | |
| ● Pavement Condition (1) | | |
| ● Signage/Wayfinding (2) | | |
| ● Trail Width (1) | | |

Commonwealth of Virginia, Maxar, Microsoft, Esri Community Maps Contributors, Arlington County, VA, Fairfax County, VA, VGIN, © OpenStreetMap, Microsoft, Esri, TomTom, Garmin, SafeGraph, GeoTechnologies, Inc, METI/NASA, USGS, EPA, NPS, US Census Bureau, USDA, USFWS



OIPI GAP-TA Custis Trail
Existing Conditions Map Series
Page 5 of 24



Issue Type

- Curb Ramp (2)
- Drainage/Ponding (2)
- Fixed Object (1)
- Other Amenity (1)

- Signage/Wayfinding (2)
- Trail Width (2)

Resource Protection Areas

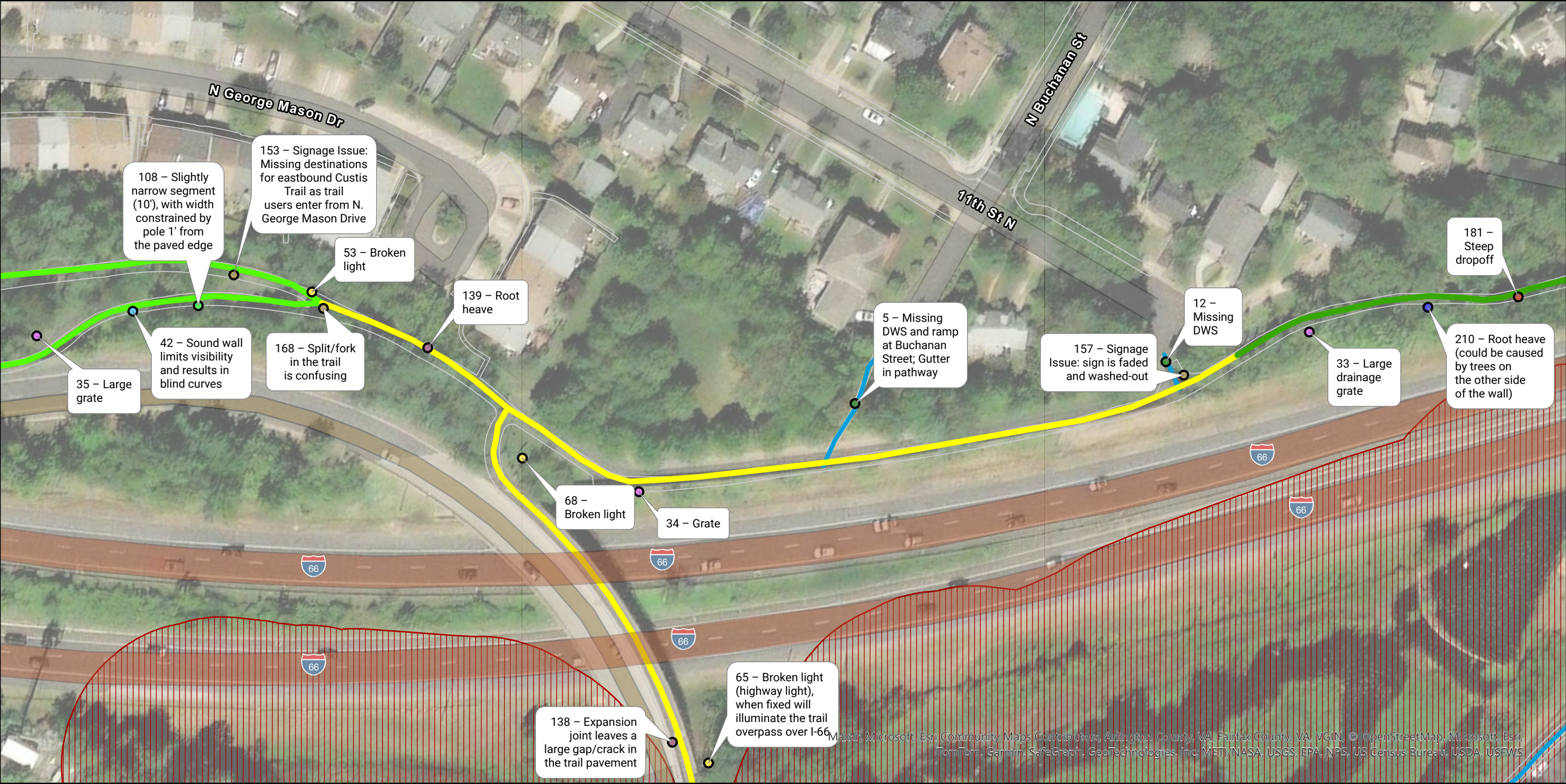
- ▨ Resource Protection Areas

Pavement Condition

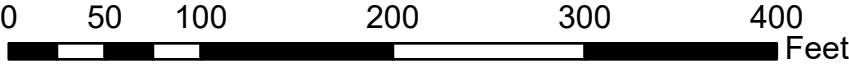
- Good

Bicycle Facility Type

- On Street Route
- Off Street Trail



OIPI GAP-TA Custis Trail
Existing Conditions Map Series
Page 6 of 24



Issue Type

- Curb Ramp (2)
- Drainage/Ponding (3)
- Dropoff/Sewer Grates (1)
- Fixed Object (1)
- Lighting (3)

- Pavement Condition (2)
- Signage/Wayfinding (3)
- Trail Width (1)
- Tree/Rooting (1)

Resource Protection Areas

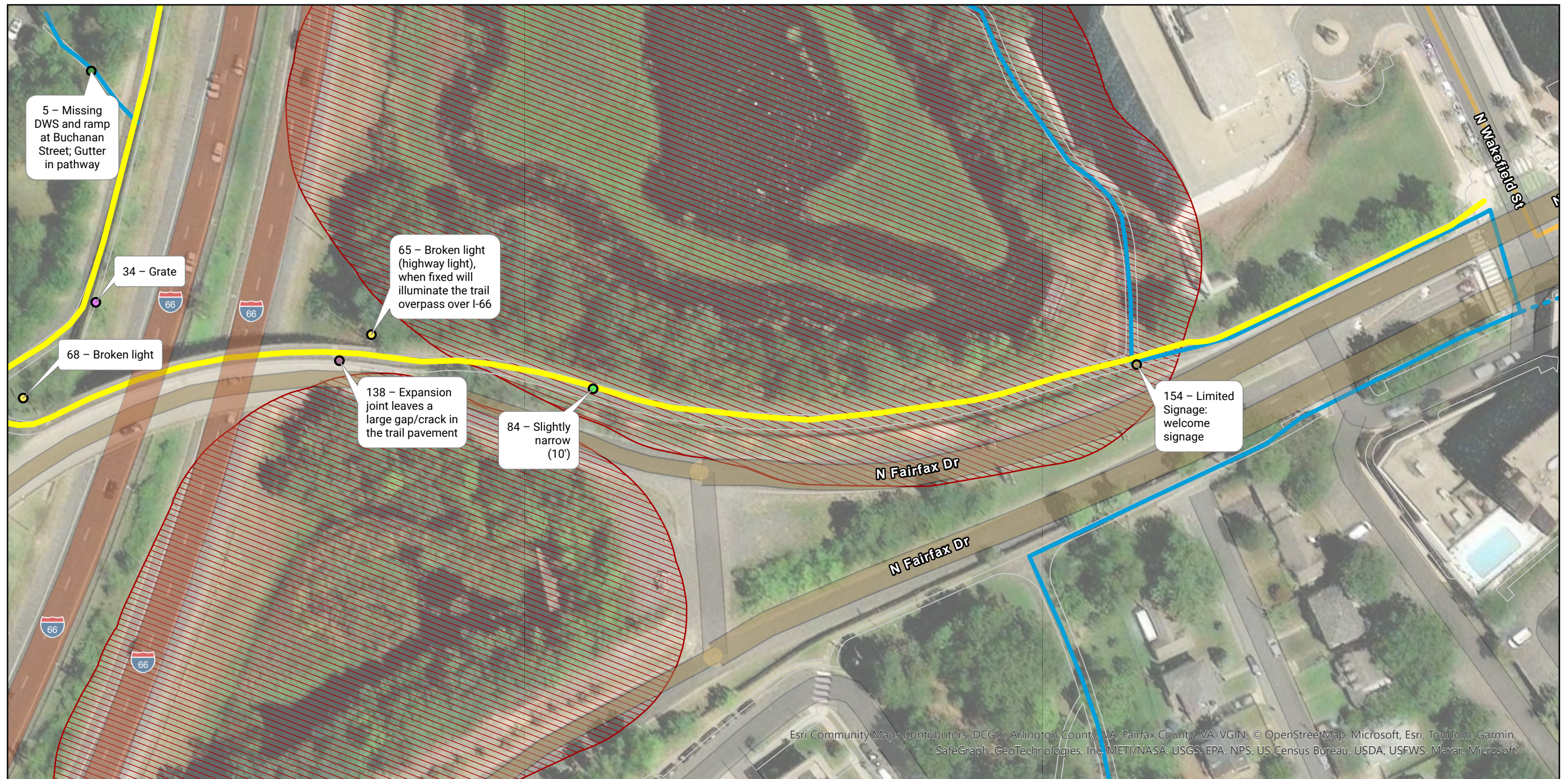
Resource Protection Areas

Pavement Condition

- Excellent
- Good
- Fair

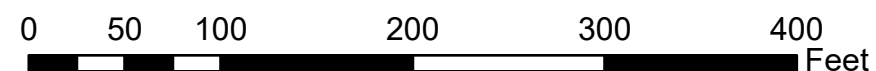
Bicycle Facility Type

- Off Street Trail



Esri Community Maps Contributors, DCGIS, Arlington County, VA, Fairfax County, VA, VGIN, © OpenStreetMap, Microsoft, Esri, TomTom, Garmin, SafeGraph, GeoTechnologies, Inc. METI/NASA, USGS, EPA, NPS, US Census Bureau, USDA, USFWS, Maxar, Microsoft

OIPI GAP-TA Custis Trail Existing Conditions Map Series Page 7 of 24



Issue Type

- Curb Ramp (1)
- Drainage/Ponding (1)
- Lighting (2)
- Pavement Condition (1)
- Signage/Wayfinding (1)

● Trail Width (1)

Resource Protection Areas

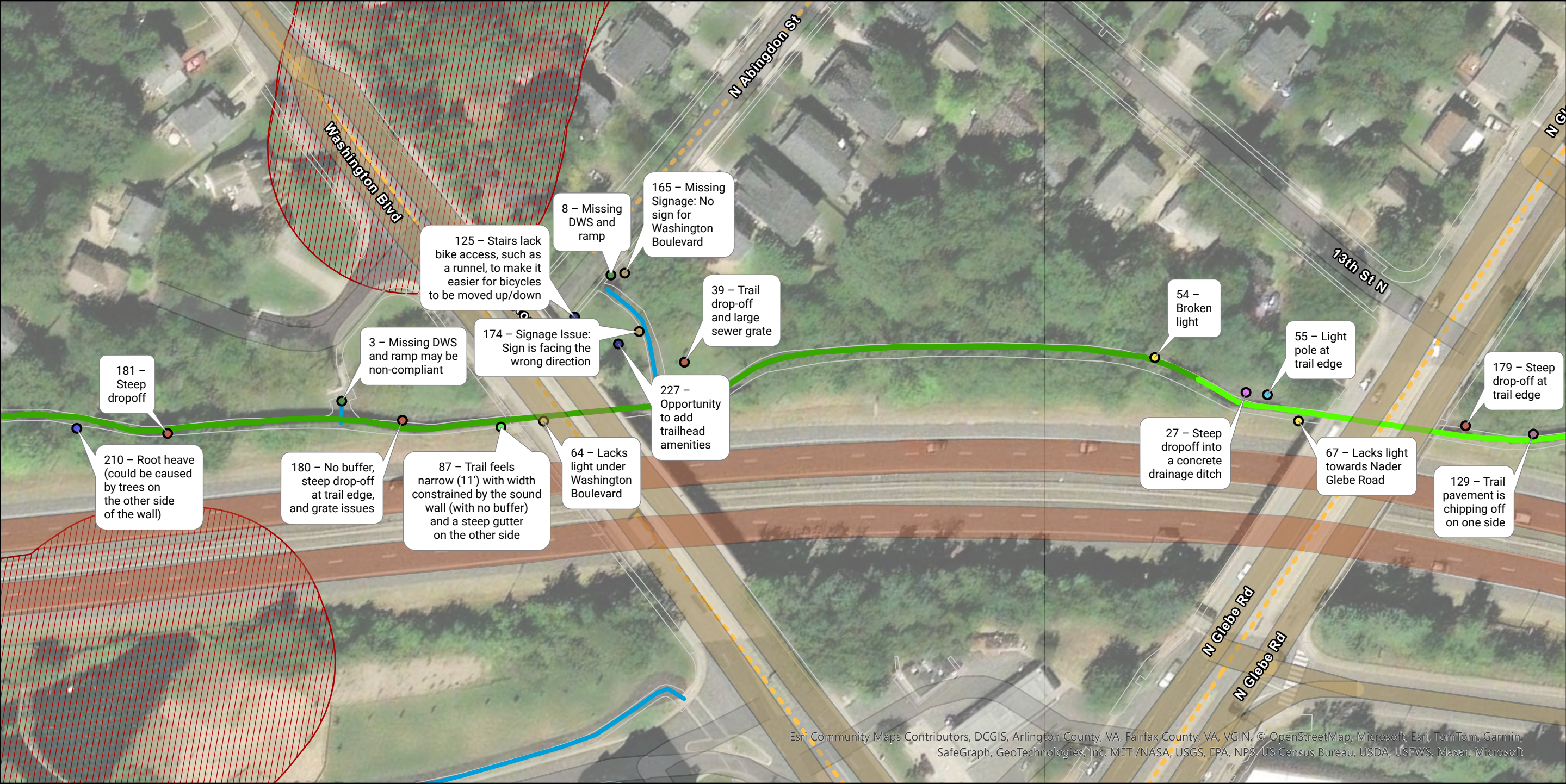
▨ Resource Protection Areas

Pavement Condition

— Fair

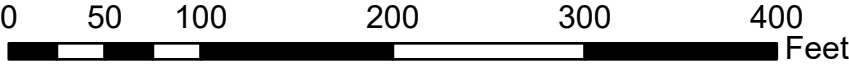
Bicycle Facility Type

- On Street Route
- Off Street Trail
- Planned Off Street Trail



Esri Community Maps Contributors, DCGIS, Arlington County, VA, Fairfax County, VA, VGIN, © OpenStreetMap, Microsoft, Esri, TomTom, Garmin, SafeGraph, GeoTechnologies, Inc, METI/NASA, USGS, EPA, NPS, US Census Bureau, USDA, USFWS, Maxar, Microsoft

OIPI GAP-TA Custis Trail
Existing Conditions Map Series
Page 8 of 24



Issue Type

- Curb Ramp (2)
- Drainage/Ponding (1)
- Dropoff/Sewer Grates (4)
- Fixed Object (1)
- Lighting (3)
- Other Amenity (2)
- Pavement Condition (1)
- Signage/Wayfinding (2)
- Trail Width (1)
- Tree/Rooting (1)

Resource Protection Areas

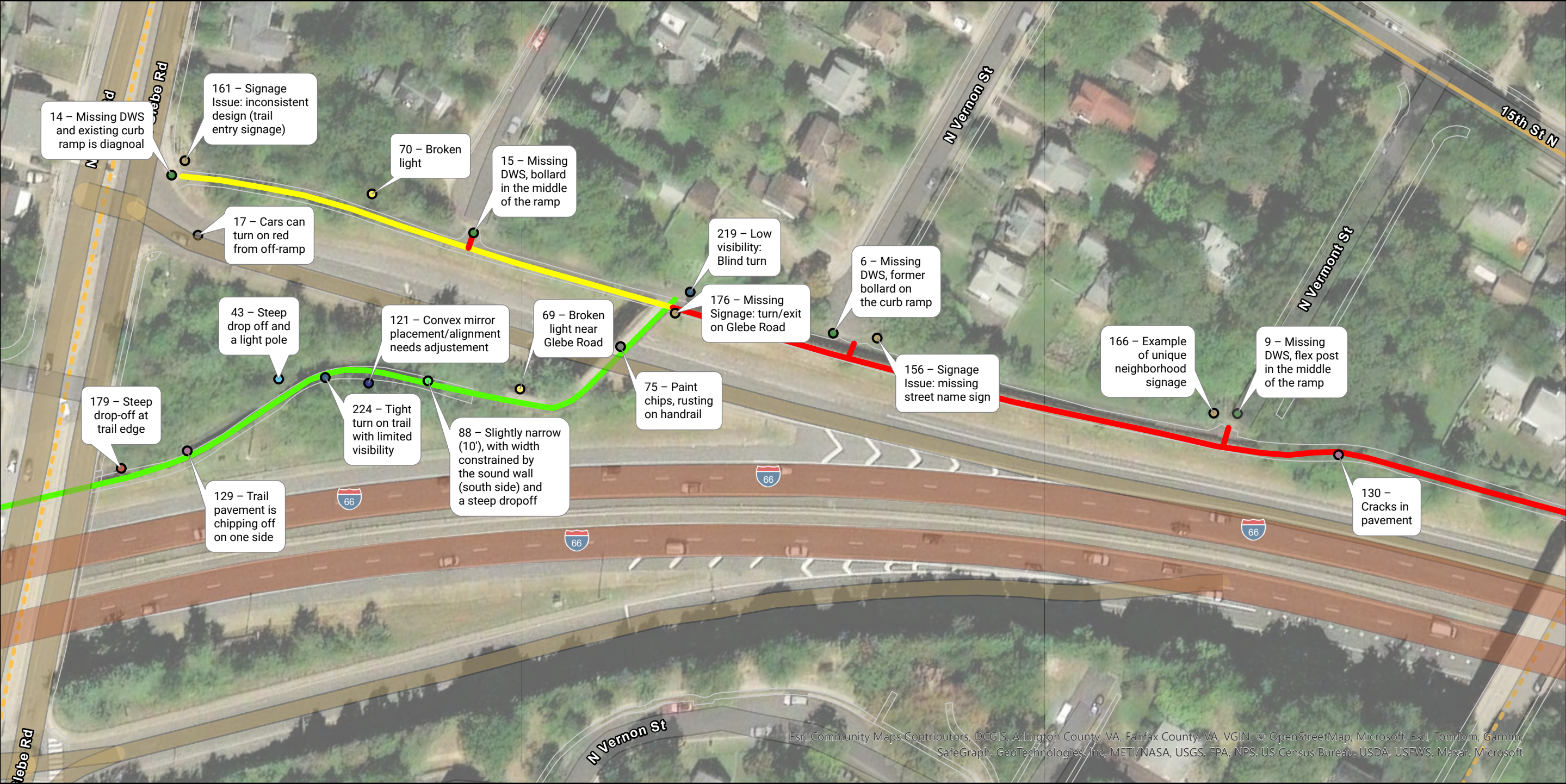
Resource Protection Areas

Pavement Condition

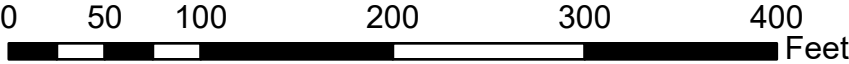
- Excellent
- Good

Bicycle Facility Type

- Off Street Trail
- Planned On Street Route



OIPI GAP-TA Custis Trail
Existing Conditions Map Series
Page 9 of 24



Issue Type

- Curb Ramp (4)
- Dropoff/Sewer Grates (1)
- Fixed Object (1)
- Lighting (2)

- Other Amenity (1)
- Pavement Condition (2)
- Signage/Wayfinding (4)
- Trail Width (1)
- Visibility/Blind Spots (2)

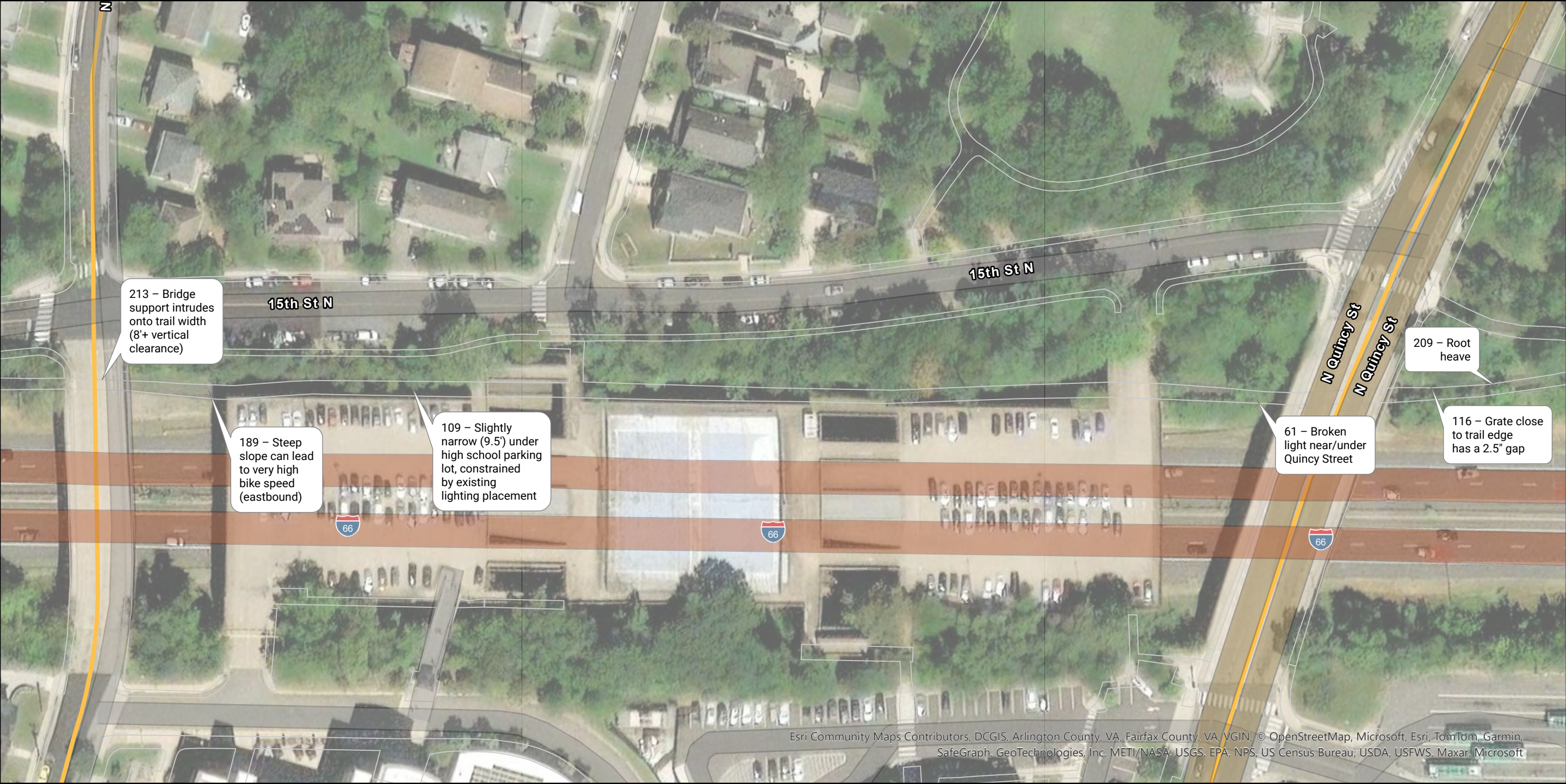
- Other (2)

Pavement Condition

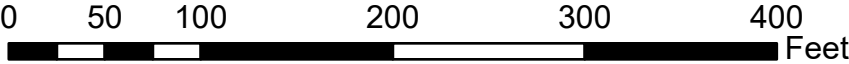
- Good
- Fair
- Poor

Bicycle Facility Type

- On Street Route
- Planned On Street Route



OIPI GAP-TA Custis Trail
Existing Conditions Map Series
Page 11 of 24



Issue Type

- Dropoff/Sewer Grates (1)
- Lighting (1)
- Steep Slope (1)

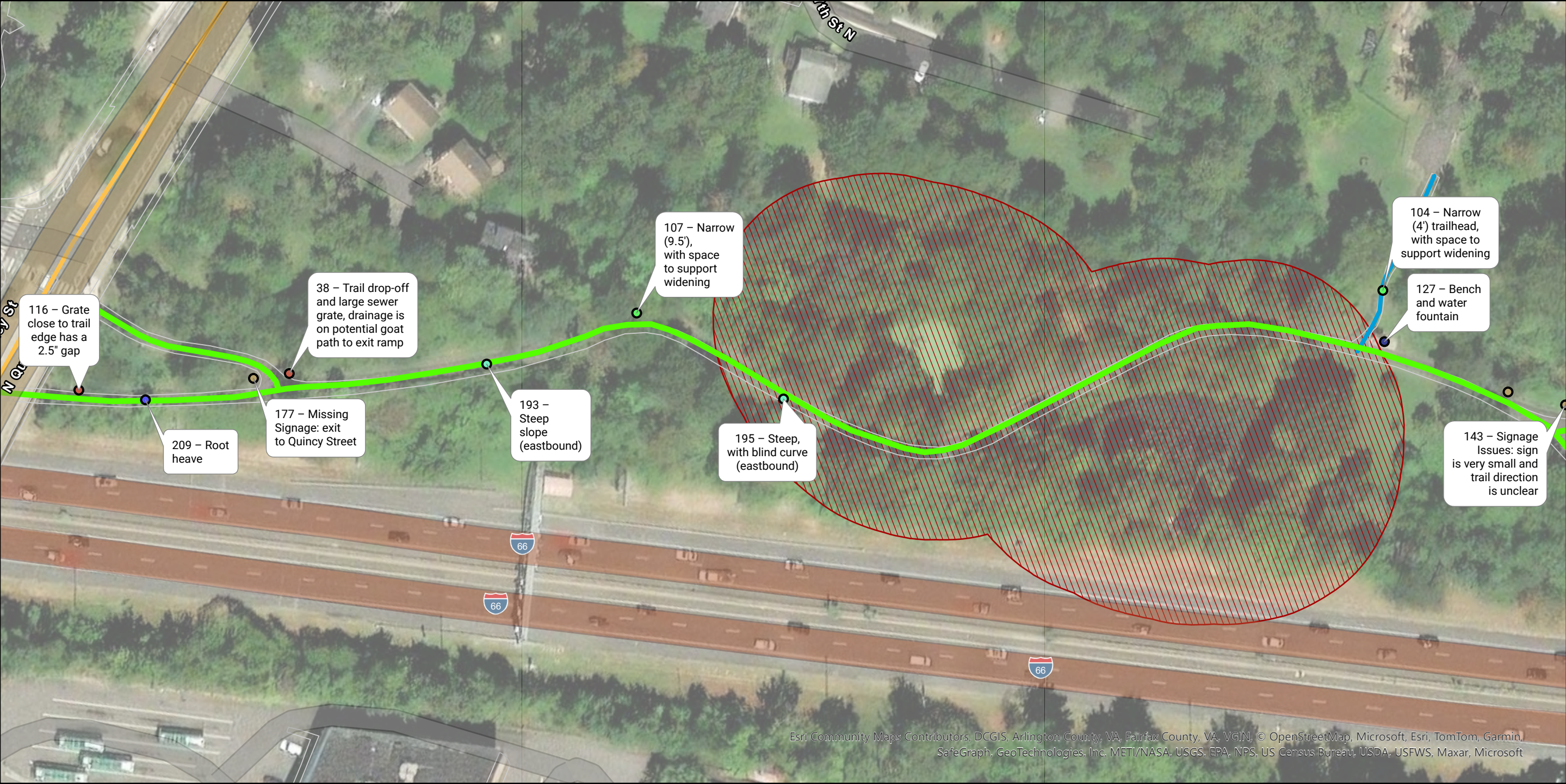
- Trail Width (1)
- Tree/Rooting (1)
- Other (1)

Pavement Condition

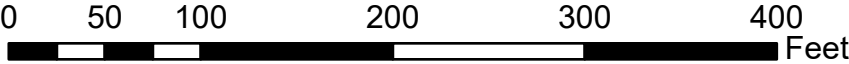
Good

Bicycle Facility Type

On Street Route



OIPI GAP-TA Custis Trail
Existing Conditions Map Series
Page 12 of 24



Issue Type

- Dropoff/Sewer Grates (2)
- Other Amenity (1)
- Signage/Wayfinding (3)
- Steep Slope (2)

- Trail Width (2)
- Tree/Rooting (1)

Resource Protection Areas

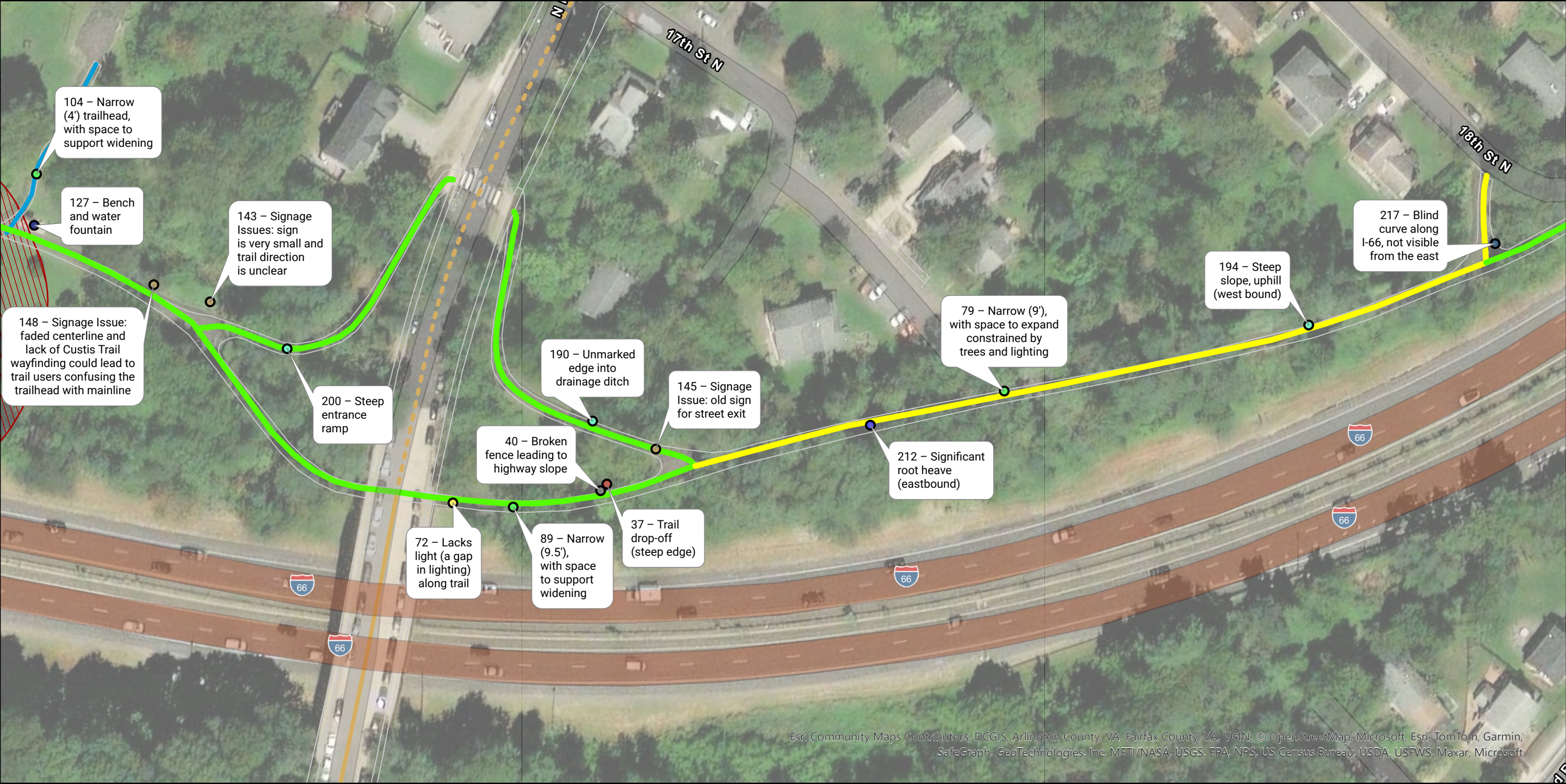
- ▨ Resource Protection Areas

Pavement Condition

- Good

Bicycle Facility Type

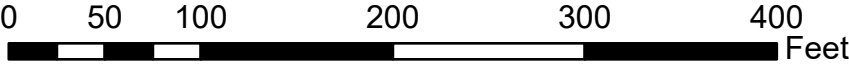
- On Street Route
- Off Street Trail



Esri Community Maps Contributors, DCGIS, Arlington County, VA, Fairfax County, VA, VGIN, © OpenStreetMap, Microsoft, Esri, TomTom, Garmin, SafeGraph, GeoTechnologies, Inc. METI/NASA, USGS, EPA, NPS, US Census Bureau, USDA, USFWS, Maxar, Microsoft

OIPI GAP-TA Custis Trail

Existing Conditions Map Series
Page 13 of 24



Issue Type

- Dropoff/Sewer Grates (1)
- Lighting (1)
- Other Amenity (1)
- Signage/Wayfinding (3)
- Steep Slope (3)
- Trail Width (3)
- Tree/Rooting (1)
- Visibility/Blind Spots (1)
- Other (1)

Resource Protection Areas

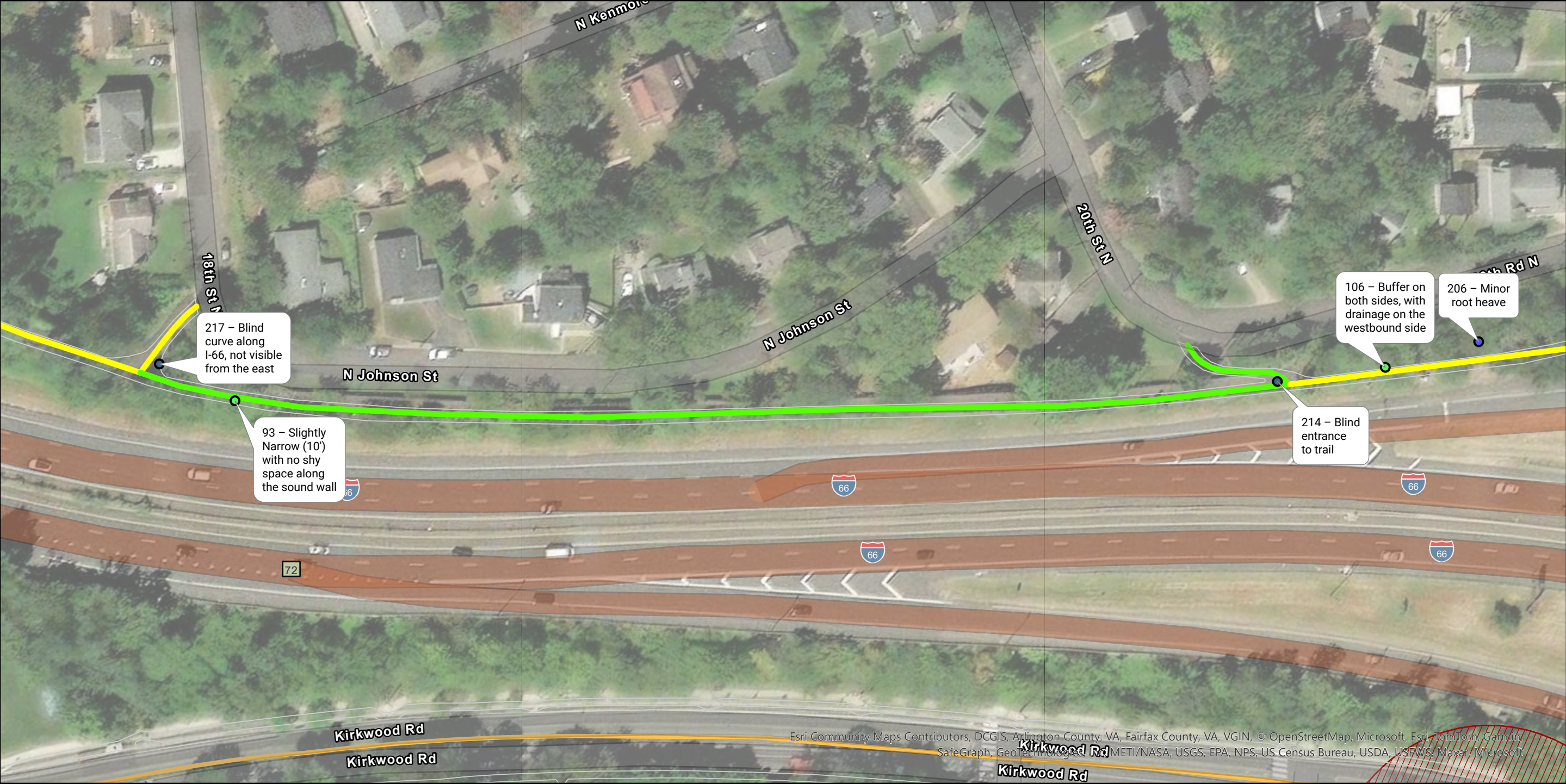
- Resource Protection Areas

Pavement Condition

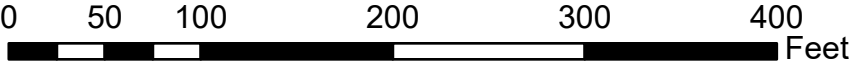
- Good
- Fair

Bicycle Facility Type

- On Street Route
- Off Street Trail
- Planned On Street Route



OIPI GAP-TA Custis Trail
Existing Conditions Map Series
Page 14 of 24



Issue Type

- Trail Width (2)
- Tree/Rooting (1)
- Visibility/Blind Spots (2)

Resource Protection Areas

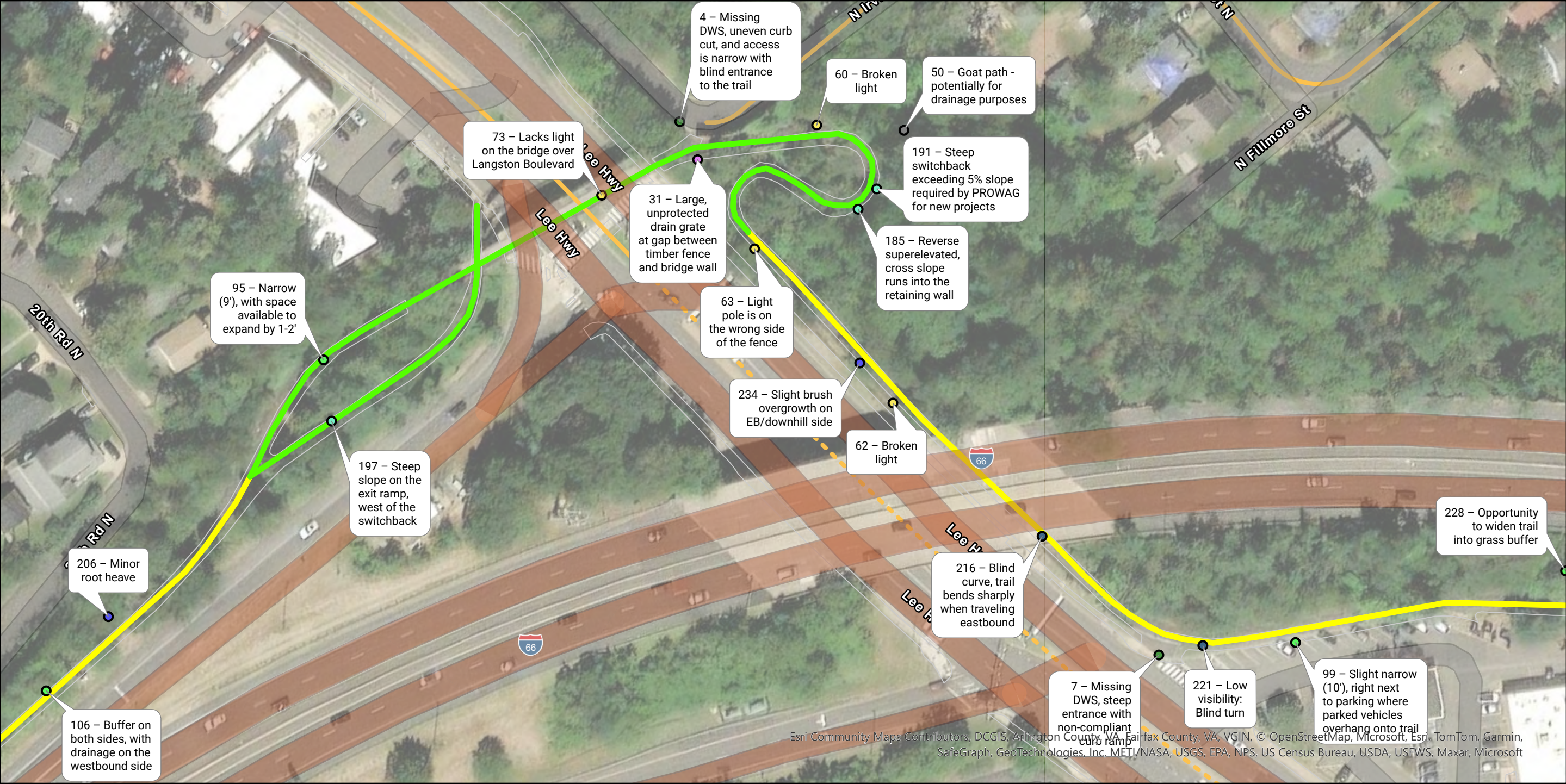
- ▨ Resource Protection Areas

Pavement Condition

- Good
- Fair

Bicycle Facility Type

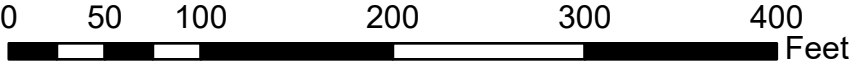
- On Street Route



Esri Community Maps Contributors, DCGIS, Arlington County, VA, Fairfax County, VA, VGIN, © OpenStreetMap, Microsoft, Esri, TomTom, Garmin, SafeGraph, GeoTechnologies, Inc. METI/NASA, USGS, EPA, NPS, US Census Bureau, USDA, USFWS, Maxar, Microsoft

OIPI GAP-TA Custis Trail

Existing Conditions Map Series
Page 15 of 24



Issue Type

- Curb Ramp (2)
- Drainage/Ponding (1)
- Lighting (4)

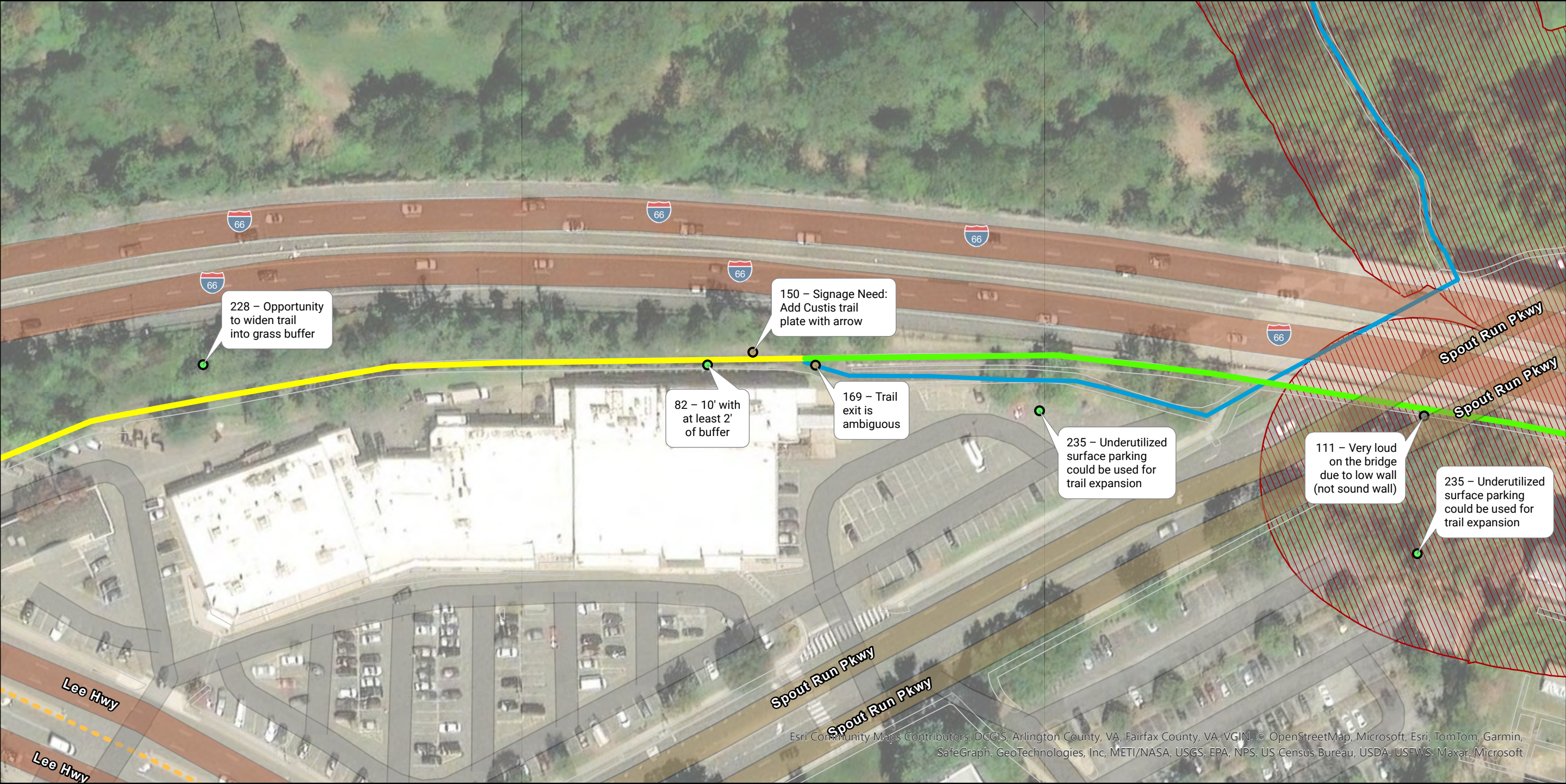
- Steep Slope (3)
- Trail Width (4)
- Tree/Rooting (2)
- Visibility/Blind Spots (2)
- Other (1)

Pavement Condition

- Good
- Fair

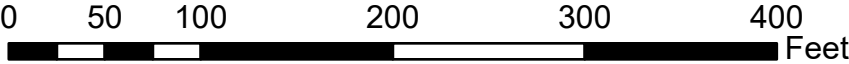
Bicycle Facility Type

- On Street Route
- Planned On Street Route



Esri Community Maps Contributors, DCGIS, Arlington County, VA, Fairfax County, VA, VGIN, © OpenStreetMap, Microsoft, Esri, TomTom, Garmin, SafeGraph, GeoTechnologies, Inc, METI/NASA, USGS, EPA, NPS, US Census Bureau, USDA, USFWS, Maxar, Microsoft

OIPI GAP-TA Custis Trail
Existing Conditions Map Series
Page 16 of 24



Issue Type

- Signage/Wayfinding (2)
- Trail Width (4)
- Other (1)

Resource Protection Areas

- Resource Protection Areas

Pavement Condition

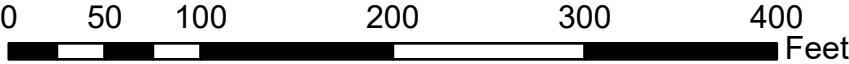
- Good
- Fair

Bicycle Facility Type

- Off Street Trail
- Planned On Street Route

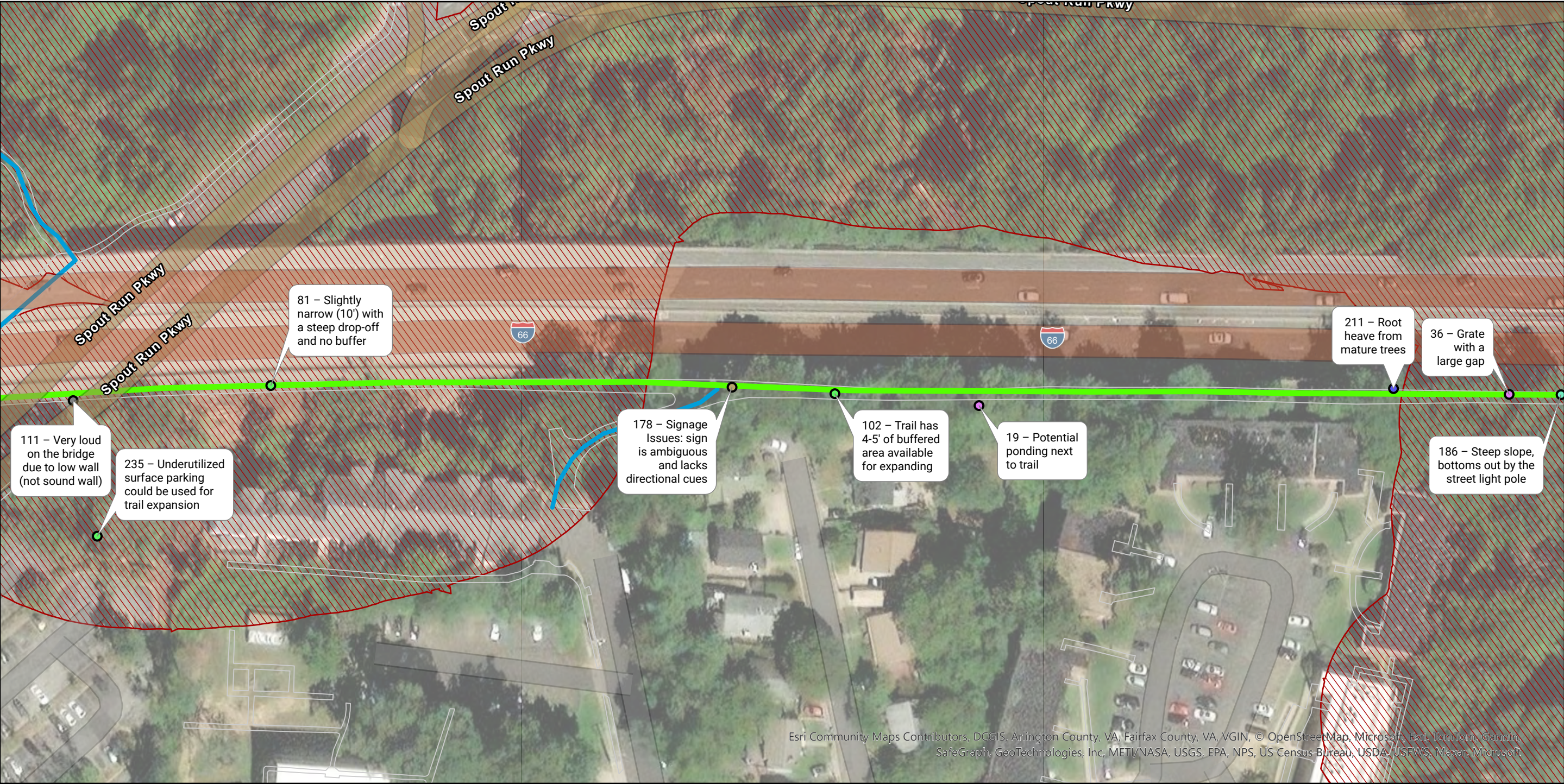


OIPI GAP-TA Custis Trail
Existing Conditions Map Series
Page 17 of 24

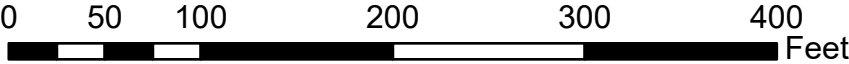


- Other (1)
- Resource Protection Areas**
- Resource Protection Areas
- Pavement Condition**
- Good

- Bicycle Facility Type**
- On Street Route
 - Off Street Trail



OIPI GAP-TA Custis Trail
Existing Conditions Map Series
Page 18 of 24



Issue Type

- Drainage/Ponding (2)
- Signage/Wayfinding (1)
- Steep Slope (1)
- Trail Width (3)

- Tree/Rooting (1)
- Other (1)

Resource Protection Areas

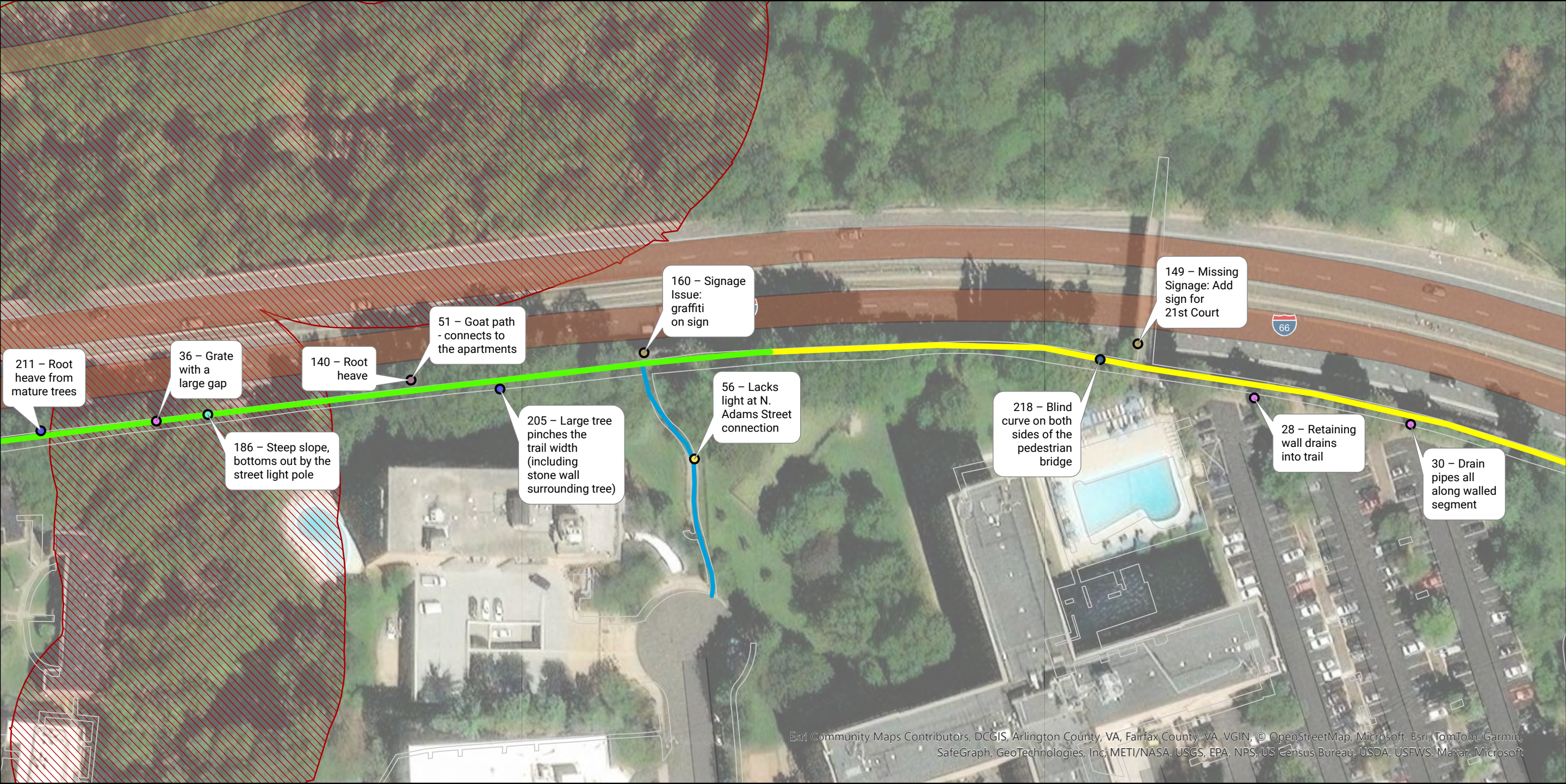
- Resource Protection Areas

Pavement Condition

- Good

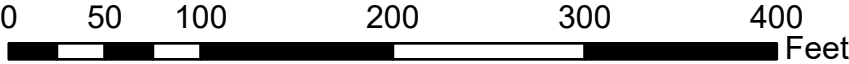
Bicycle Facility Type

- Off Street Trail



Esri Community Maps Contributors, DCGIS, Arlington County, VA, Fairfax County, VA, VGIN, © OpenStreetMap, Microsoft, Esri, TomTom, Garmin, SafeGraph, GeoTechnologies, Inc, METI/NASA, USGS, EPA, NPS, US Census Bureau, USDA, USFWS, Maxar, Microsoft

OIPI GAP-TA Custis Trail
Existing Conditions Map Series
Page 19 of 24



Issue Type

- Drainage/Ponding (3)
- Lighting (1)
- Pavement Condition (1)
- Signage/Wayfinding (2)
- Steep Slope (1)

- Tree/Rooting (2)
- Visibility/Blind Spots (1)
- Other (1)

Resource Protection Areas

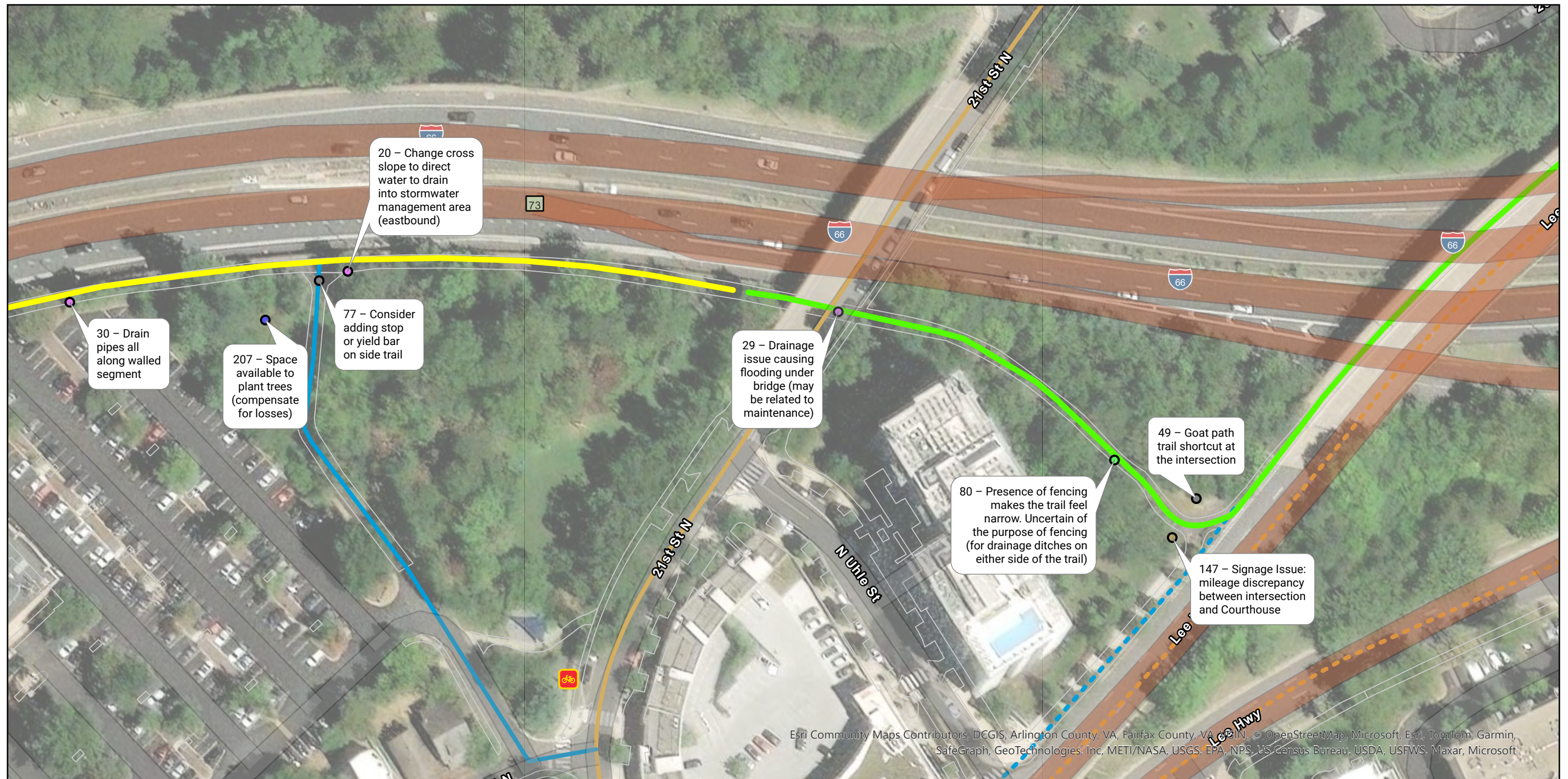
- ▨ Resource Protection Areas

Pavement Condition

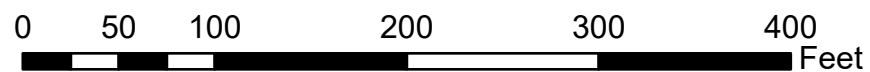
- Good
- Fair

Bicycle Facility Type

- Off Street Trail



OIPI GAP-TA Custis Trail Existing Conditions Map Series Page 20 of 24



Issue Type

- Drainage/Ponding (3)
- Signage/Wayfinding (1)
- Trail Width (1)
- Tree/Rooting (1)

● Other (2)

Pavement Condition

- Good
- Fair

Bicycle Facility Type

- On Street Route
- Off Street Trail
- Planned On Street Route
- Planned Off Street Trail



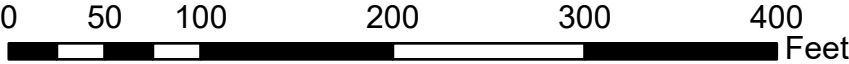
Capital Bikeshare Station

Esri Community Maps Contributors, DCGIS, Arlington County, VA, Fairfax County, VA, © OpenStreetMap, Microsoft, Esri, TomTom, Garmin, SafeGraph, GeoTechnologies, Inc, METI/NASA, USGS, EPA, NPS, US Census Bureau, USDA, USFWS, Maxar, Microsoft



Esri Community Maps Contributors, DCGIS, Arlington County, VA, Fairfax County, VA, VGIN, OpenStreetMap, Microsoft, Esri, TomTom, Garmin, SafeGraph, GeoTechnologies, Inc, METI/NASA, USGS, EPA, NPS, US Census Bureau, USDA, USFWS, Maxar, Microsoft

OIPI GAP-TA Custis Trail
Existing Conditions Map Series
Page 21 of 24



Issue Type

- Curb Ramp (1)
- Fixed Object (1)
- Other Amenity (2)
- Signage/Wayfinding (3)

- Trail Width (5)
- Visibility/Blind Spots (1)
- Other (1)

Resource Protection Areas

- ▨ Resource Protection Areas

Pavement Condition

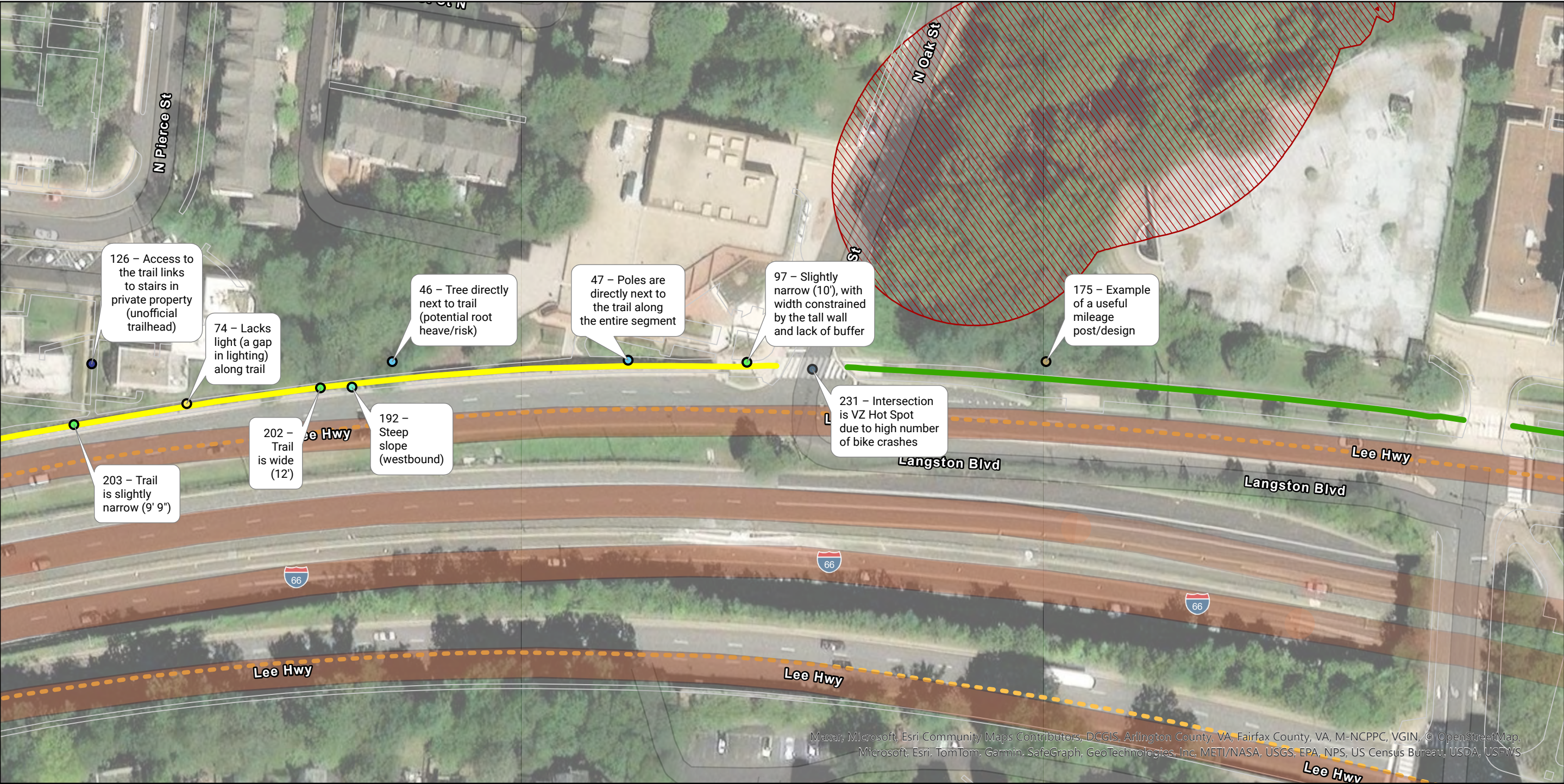
- Good

Bicycle Facility Type

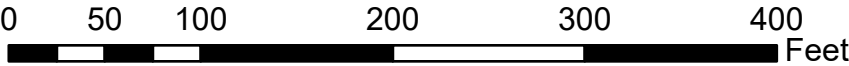
- On Street Route
- Off Street Trail

Planned On Street Route

- Capital Bikeshare Station



OIPI GAP-TA Custis Trail
Existing Conditions Map Series
Page 23 of 24



Issue Type

- Fixed Object (2)
- Lighting (1)
- Other Amenity (1)
- Signage/Wayfinding (1)
- Steep Slope (1)

- Trail Width (3)
- Visibility/Blind Spots (1)

Resource Protection Areas

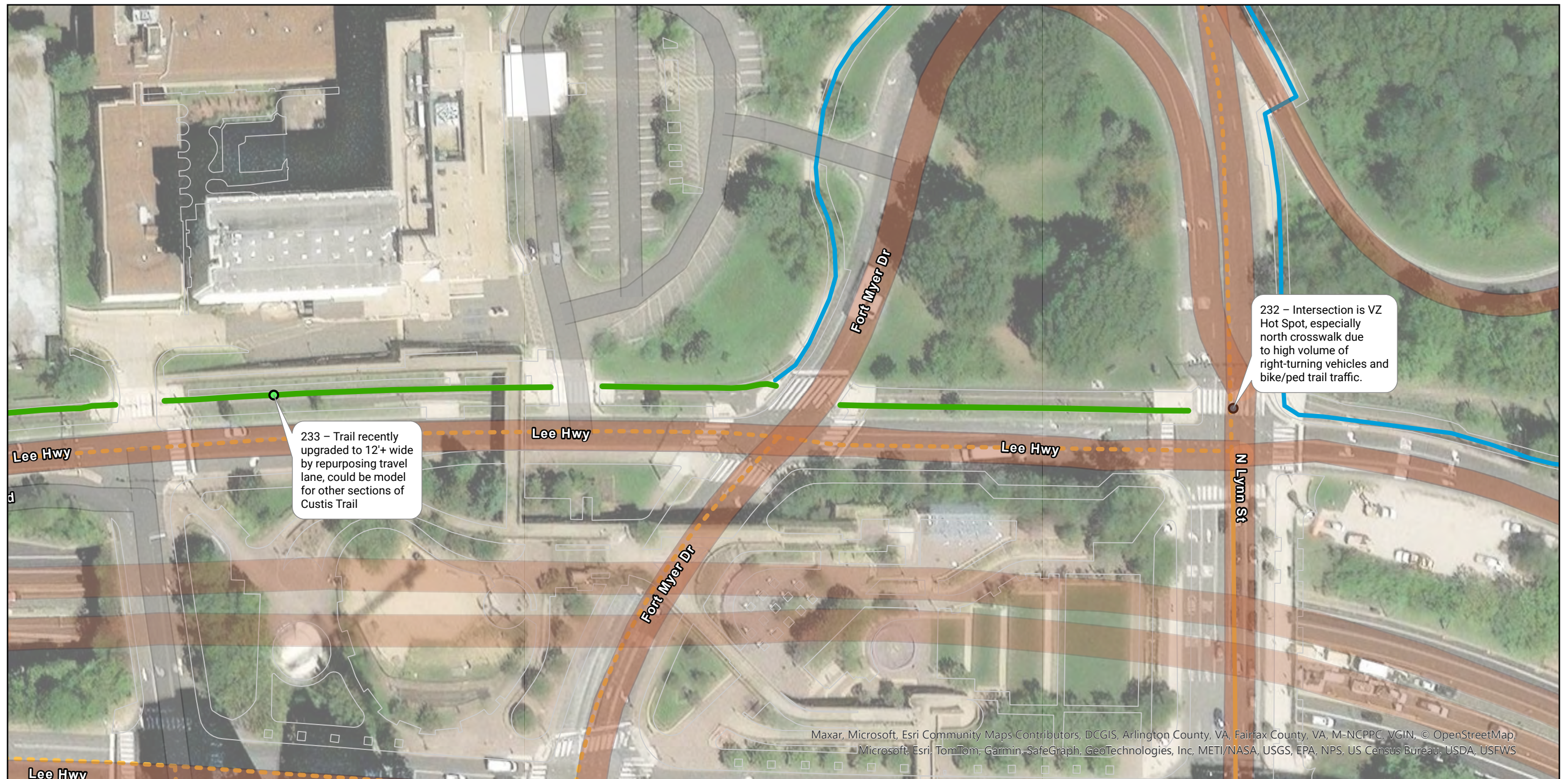
- Resource Protection Areas

Pavement Condition

- Excellent
- Fair

Bicycle Facility Type

- Planned On Street Route



OIPI GAP-TA Custis Trail

Existing Conditions Map Series
Page 24 of 24



0 50 100 200 300 400 Feet

Issue Type

- Trail Width (1)
- Visibility/Blind Spots (1)

Pavement Condition

- Excellent

Bicycle Facility Type

- On Street Route
- Off Street Trail
- Planned On Street Route