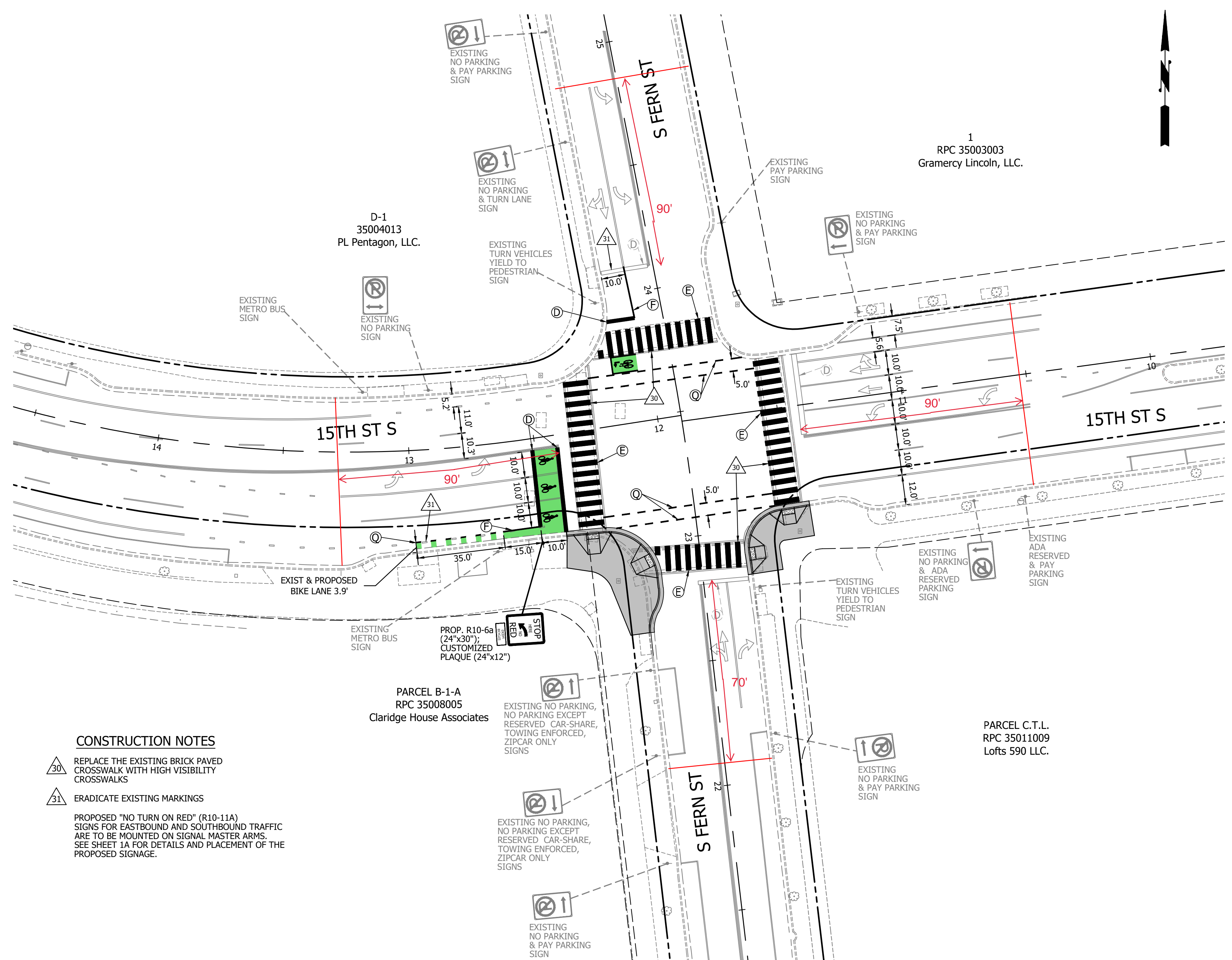




| APPROVALS   | DATE       |
|---|------------|
| <i>Amy Pflaum</i><br>QUALITY CONTROL ENGINEER                   | 04/04/2022 |
| <i>Oliver E. Sullivan</i><br>CONSTRUCTION MANAGEMENT SUPERVISOR | 5/2/2022   |
| <i>Alan</i><br>WATER, SEWER, STREETS BUREAU CHIEF               | 4/13/2022  |
| <i>Dennis M. Leach</i><br>TRANSPORTATION DIRECTOR               | 04/11/2022 |
| <i>Rene Harris</i><br>PROJECT MANAGER                           | 3/31/2022  |

| REVISIONS | DATE |
|-----------|------|
|           |      |
|           |      |
|           |      |
|           |      |
|           |      |
|           |      |
|           |      |
|           |      |
|           |      |
|           |      |



**CONSTRUCTION NOTES**

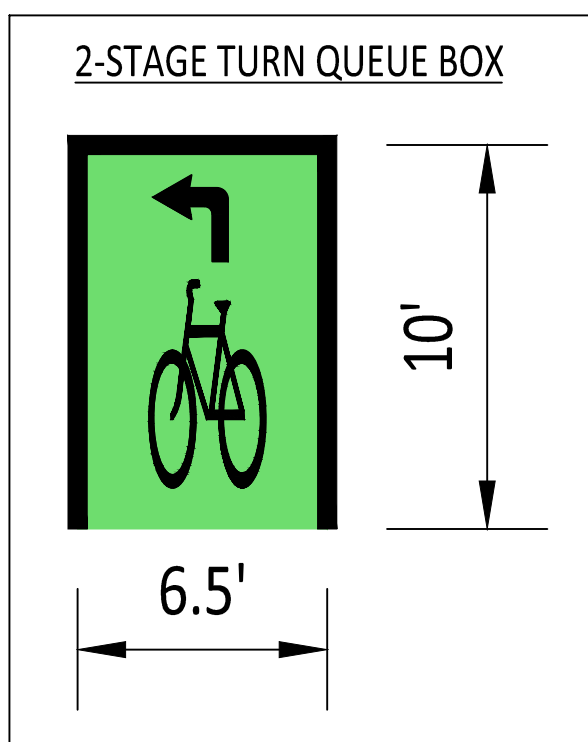
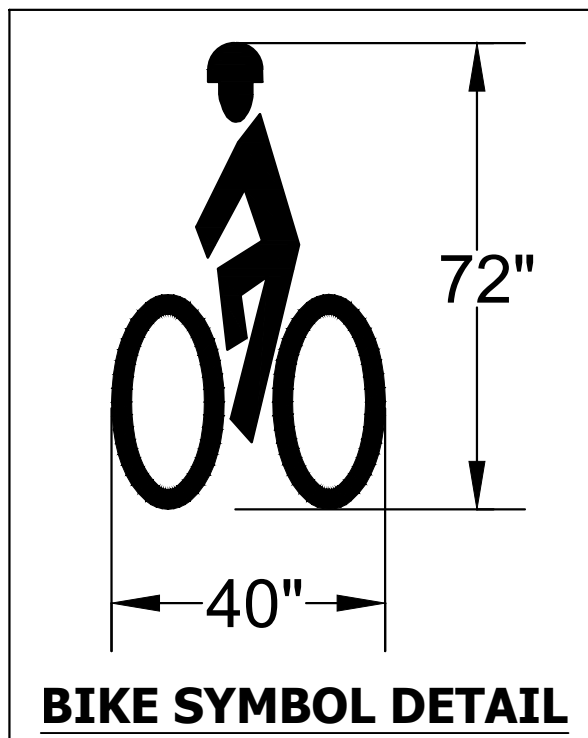
- 30 REPLACE THE EXISTING BRICK PAVED CROSSWALK WITH HIGH VISIBILITY CROSSWALKS
  - 31 ERADICATE EXISTING MARKINGS
- PROPOSED "NO TURN ON RED" (R10-11A) SIGNS FOR EASTBOUND AND SOUTHBOUND TRAFFIC ARE TO BE MOUNTED ON SIGNAL MASTER ARMS. SEE SHEET 1A FOR DETAILS AND PLACEMENT OF THE PROPOSED SIGNAGE.

**PAVEMENT MARKING NOTES:**

- STREET WIDTH MEASUREMENTS ARE FROM FACE OF CURB TO FACE OF CURB. LANES ARE MEASURED FROM CENTER OF MARKING TO CENTER OF MARKING.
- CONTACT DES-TRANSPORTATION ENGINEERING & OPERATIONS CONSTRUCTION MANAGEMENT SPECIALIST OR HIS DESIGNEE AT 703-228-6598 OR 571-437-1077 TO APPROVE MARKING LAYOUT 48 HOURS PRIOR TO INSTALLATION OF MARKINGS.
- PAVEMENT MARKINGS TO BE IN ACCORDANCE WITH THE FOLLOWING AND ANY REVISIONS HERE TO:
  - THE MANUAL ON UNIFORM TRAFFIC CONTROL DEVICES.
  - ARLINGTON COUNTY PAVEMENT MARKING SPECIFICATIONS.
- ALL MARKINGS SHALL BE THERMOPLASTIC PER ARLINGTON COUNTY MARKING STANDARDS UNLESS OTHERWISE NOTED.
- STOP BARS SHALL BE A MINIMUM OF 4' IN ADVANCE OF A MARKED CROSSWALK. IF THERE IS NO MARKED CROSSWALK, STOP BAR SHALL BE NO MORE THAN 30' FROM THE NEAREST EDGE OF THE INTERSECTED TRAVELED WAY.
- CROSSWALKS SHALL BE 10' WIDE UNLESS OTHERWISE NOTED.
- LEFT TURN ARROWS SHALL BE LOCATED 25' BACK FROM STOP BAR. FOR ADDITIONAL ARROWS FOLLOW COUNTY MARKING STANDARDS.
- ON-STREET PARKING LANE IS 7' WIDE (UNLESS OTHERWISE NOTED) AND MARKED WITH 4" WIDE WHITE LINES. BEGINNING AND END OF PARKING SHALL BE MARKED WITH AN END LINE PERPENDICULAR TO CURB EXCEPT AT NUBS OR WHERE OTHERWISE INDICATED.
- SHARED LANE MARKINGS SHALL BE PLACED IN CENTER OF LANE, 250' APART UNLESS OTHERWISE SPECIFIED.
- BIKE LANE SYMBOLS TO BE PLACED 330' APART UNLESS OTHERWISE SPECIFIED.
- EDGE LINES ARE ONLY REQUIRED WHERE SHOWN ON THE PLANS.
- FOR DETAILS SEE ARLINGTON COUNTY PAVEMENT MARKING SPECIFICATION, DETAILS MK-1 TO MK-12

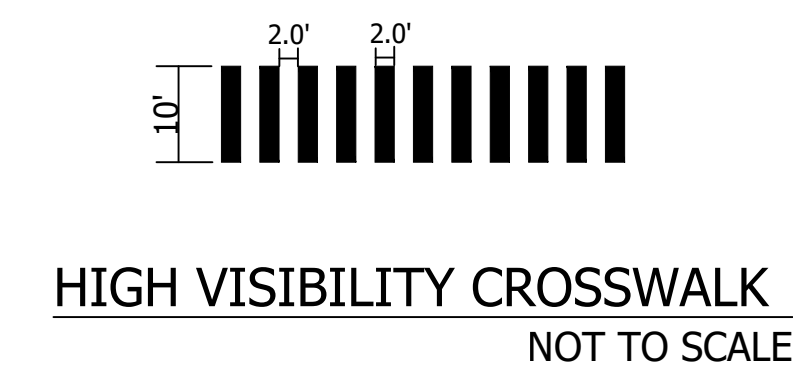
**SIGN NOTES:**

- FOR ALL SIGN POSTS PLACED IN CONCRETE USE 7 GAUGE HEAVY DUTY ANCHOR (30"x2.50") WITH HARDWARE FOR 2" POST. USE 3/8" CORNER BOLT WITH FLANGED NUT AND 3/8" DRIVER RIVET WITH WASHER.
- CONTACT TE&O CONSTRUCTION MANAGER OR HIS DESIGNEE AT 703-228-6598 OR 571-437-1077 48 HRS PRIOR TO POURING CONCRETE. ALTERNATIVE CONTACT AT 703-228-3788 OR 571-414-7497.



**STANDARD PAVEMENT MARKING LEGEND**

|                    |  |   |
|--------------------|--|---|
| (A) TYPE B CLASS 1 | WHITE 4" WIDTH                           | PARKING LANES, EDGE LINES, LANE LINES           |
| (B) TYPE B CLASS 1 | WHITE 4" WIDTH, 10' LONG, 30' SPACING    | DASHED LANE LINES                               |
| (C) TYPE B CLASS 1 | WHITE 4" WIDTH, 2' LONG 10' SPACING      | LANE TRANSITIONS, TURN LANE SKIPS               |
| (D) TYPE B CLASS 1 | WHITE 18" WIDTH                          | STOP BARS                                       |
| (E) TYPE B CLASS 1 | WHITE 24" WIDTH                          | CONTINENTAL CROSS WALKS, VDOT STOP BARS         |
| (F) TYPE B CLASS 1 | WHITE 6" WIDTH                           | TURN LANES, TRANSVERSE CROSS WALKS, BIKE LANES  |
| (G) TYPE B CLASS 1 | YELLOW 4" WIDTH, 10' LONG, 30' SPACING   | DIVIDED TRAFFIC, TWO WAY TURN LANES             |
| (H) TYPE B CLASS 1 | YELLOW 4" WIDTH                          | EDGE LINES                                      |
| (I) TYPE B CLASS 1 | YELLOW 4" WIDTH, DOUBLE LINE, 4" SPACING | CENTERLINES                                     |
| (J) TYPE B CLASS 1 | WHITE 6" WIDTH, 10' SPACING @45°         | HATCH LINES, SAFETY ZONES                       |
| (K) TYPE B CLASS 1 | WHITE SINGLE ARROW                       | TURN LANES                                      |
| (L) TYPE B CLASS 1 | WHITE COMBINATION ARROW                  | TURN LANES                                      |
| (M) TYPE B CLASS 1 | WHITE 8" LETTERS                         | PAVEMENT LETTERS (STOP, YIELD, BUS, ONLY, etc.) |
| (N) TYPE B CLASS 1 | WHITE 6" WIDTH, 2' LONG, 10' SPACING     | LANE TRANSITIONS, TURN LANE SKIPS               |
| (O) TYPE B CLASS 1 | WHITE 12" WIDTH, 20' SPACING @45°        | GORE MARKINGS                                   |
| (P) TYPE B CLASS 1 | YELLOW 8" WIDTH @45°                     | GORE MARKINGS                                   |
| (Q) TYPE B CLASS 1 | WHITE 6" WIDTH, 2' LONG, 4' SPACING      | LANE TRANSITIONS                                |
| (R) TYPE B CLASS 1 | WHITE 4" WIDTH, DOUBLE LINE, 4' SPACING  | CURB EXTENSIONS                                 |
| (S) TYPE B CLASS 1 | YELLOW 4" WIDTH, 2' LONG, 4' SPACING     | LANE TRANSITIONS                                |
| (T) TYPE B CLASS 1 | YELLOW 6" WIDTH, 2' LONG, 4' SPACING     | LANE TRANSITIONS                                |
| (U) TYPE B CLASS 1 | YELLOW 6" WIDTH, 10' SPACING @45°        | HATCH LINES, SAFETY ZONES                       |
| (V) TYPE B CLASS 1 | YELLOW 6" WIDTH, 2' LONG, 4' SPACING     | LANE TRANSITIONS, DASHED CENTERLINES            |



| STRIPING LEGEND       |                       |
|-----------------------|-----------------------|
| (A) EXISTING STRIPING | (A) PROPOSED STRIPING |

| LEGEND   |          |
|----------|----------|
| EXISTING | PROPOSED |
|          |          |
|          |          |
|          |          |
|          |          |

15TH ST S AND S FERN ST INTERSECTION

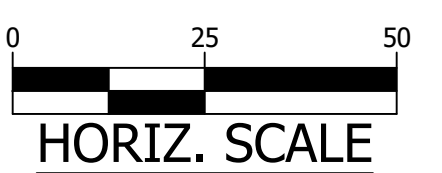
CC21

SIGN AND MARKING PLAN

DESIGNED: V SHEPELEVA  
 DRAWN: V SHEPELEVA  
 CHECKED: J LIN

PLOTTED: JUNE 15 2022

SCALE:



C101.1