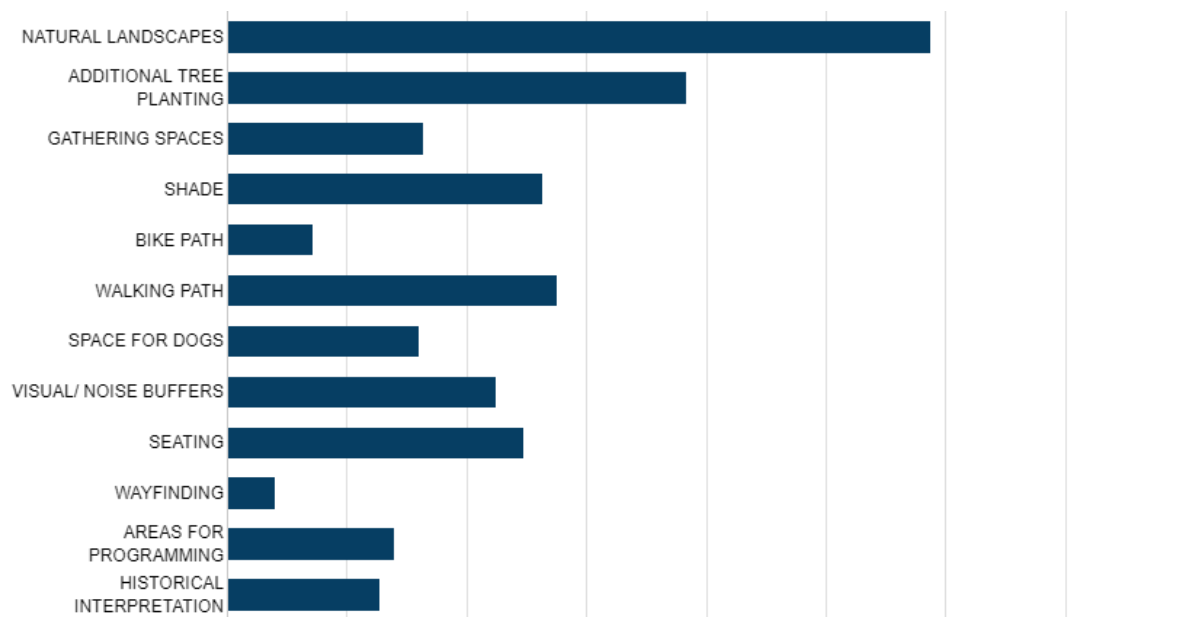


## Share Your Thoughts on the Proposed Draft Design Concepts for the New Park at South Eads Street and Army Navy Drive

(201 Submissions)

Which of these design elements would you be MOST excited to see at the new park?



NATURAL LANDSCAPES	147
ADDITIONAL TREE PLANTING	96
GATHERING SPACES	41
SHADE	66
BIKE PATH	18
WALKING PATH	69
SPACE FOR DOGS	40
VISUAL/ NOISE BUFFERS	56

SEATING	62
WAYFINDING	10
AREAS FOR PROGRAMMING	35
HISTORICAL INTERPRETATION	32

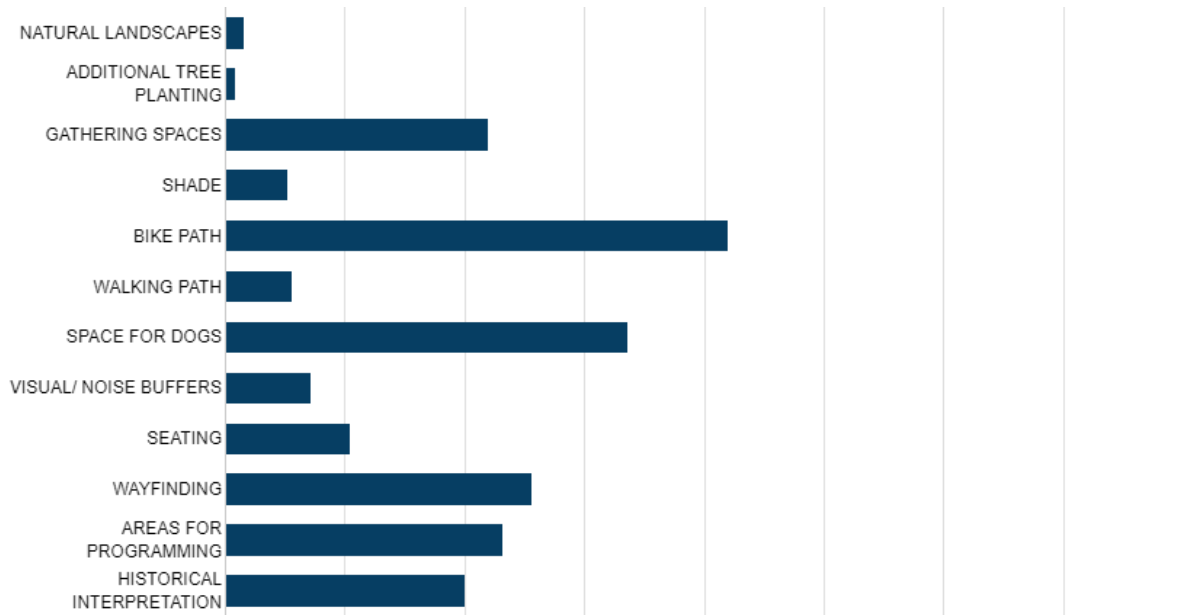
**Are there any other design elements you would be MOST excited to see that are not pictured above?**

Anything but another dog park or playground please. There's already a huge playground area next to the Boeing HQ at Long Bridge
Restrooms and water fountain
Just nice flowers, not necessarily "native plants" but whatever might be pretty and tasteful.
Devote most of the park to a meadow/pollinator/wildflower habitat with milkweed for monarch butterfly reproduction .
water feature
keep the area natural with minimum paving
Just a simple design that does not distract from Altaire apartments
Calisthenics exercise area. We already have in close proximity a park (Long Bridge Park) & space for dogs (Metropolitan Park)
Definitely a large gated dog park on grass area.
pavement. This needs to be ALL green space with zero additional pavement added.
Art work

Would like a small social recreation opportunity, like a bocce court (see the Popup park between Clarendon and Courthouse)
Keeping existing cottonwood tree
Outdoor workspace with WiFi and power
Maximize nature and greenery.
A water feature if possible to incorporate
I'd like to see another softball field but of course this space is too small.
Additional shrubs (not just trees) to provide habitat for ground dwelling birds.
playground
Landscaped flower beds with colorful annual and perennial plants.
More green space given the urban jungle and high rise nature of the area will be critical to keeping the space livable
Non-deciduous trees for winter aesthetic enjoyment
water feature (fountains, pond, birdbaths)
Hiking trails (not sure if that's included in "walking path")
Area for seating, tech friendly with charging capability - A versatile area is much desired. Would like a water fountain too.
Water Elements like waterfalls/water fountains etc to sit by.
We need larger spaces for a farmers' market. Small areas like this don't allow for the number of merchants necessary
This area desperately needs an open area for children to play.
Could the seating please have backs to it? Perching up straight with nothing to lean back against is problematic for some.

Native plants and trees. Edible plants and trees like a permaculture food forest.
Public art
Urban agriculture spaces. Perhaps edible forests (fig, peach, pawpaw trees)
The idea of tech hub seating
children play area
the safest crossing of 11th - which was the canal walk; fountains/water elements/drinking fountains
public rotating art sculptures
Treatment of 11th St. as a driveway that is pedestrian friendly for people crossing from one part of park to the next.
water runoff and reclamation; flexible space for farmer's markets or alternate uses; sport/fitness space; art or water feature
I am really excited to see the connection of the lower parcel to the future retail space.
Green space
Limit concrete such as plazas. Shade and canopy trees are paramount. Native meadow plantings, native stone along path.
NONE of the three concepts show any sort of landscape integration of the new protected bike lane on Eads with the park elements.
A "pump track" for mountain biking
We are missing a pump track for bikes.
Historical: include indigenous and Black history, perhaps also Alexander; Roach ownership (also enslavers)
WiFi, tech area, refreshment facilities (food and drink sales, toilets).

Which of these design elements would you be LEAST excited to see at the new park?



NATURAL LANDSCAPES	4
ADDITIONAL TREE PLANTING	2
GATHERING SPACES	55
SHADE	13
BIKE PATH	105
WALKING PATH	14
SPACE FOR DOGS	84
VISUAL/ NOISE BUFFERS	18
SEATING	26
WAYFINDING	64
AREAS FOR PROGRAMMING	58
HISTORICAL INTERPRETATION	50

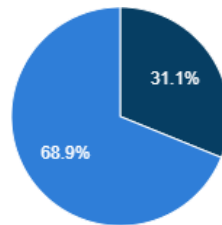
**Are there any other design elements you would be LEAST excited to see that are not pictured above?**

Also strongly opposed to a market area, which creates excessive noise that reverberates around the apartments and condos.
Bicycle path (not a good mix with children playing, people strolling), and the dog park (barking, urine, feaces).
I think there are bike lanes already planned for Army Navy Drive so that should do.
Paved plazas. Impermeable surfaces. Public spaces that serve commercial interests, especially ground floor retail and vendors.
concrete
The synthetic turf berm
shade should come from additional canopy trees
No meeting qnd gathering spaces. That brings crouds and homeless people. We live in the building behind it and are very worried.
Bike path should not go through park, it would interfere with users trying to enjoy the park area.
pavement in and of itself
No dog park.
NO MORE HARDSCAPE/PAVEMENT THAN ABSOLUTELY NECESSARY, PLEASE.
I would like to see grass we can put a blanket on to sit and read a book or lay in the sun instead of a meadow we just look at.
We have enough asphalt and concrete in Arlington.
They are all great

so many places for bikes, don't need to cut thru thus park
I was not able to click. Spaces for dogs and concrete berms and blocks seating are not beautiful
Anything that fences off the area.
Any Hardscape parts of the park
Most people have other areas for dogs and pets. Less need for noise buffers.
retail
I doubt that the amount of space allocated for a Saturday Market is large enough to reach the critical mass for a successful mar
anywhere where vagrants can sleep
Fencing or areas restricted to just dog spaces
meandering crossing over 11th - not safe - increases crossing distance, decreases sight lines.
more paved areas
pavement; single use space
Please minimize pavement and impermeable surfaces
Excessive concrete, non-native vegetation, including lawn. The area is not large enough for a dog park without limiting other a
More paved surface
Don't mind bike path but use should be managed with County bike element

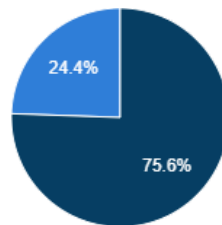
**What do you think is the appropriate balance between each of the following choices?**  
**NOTE: "Available Budget" refers to a numerical value, not a monetary value.**

SLIDER: Active vs. contemplative



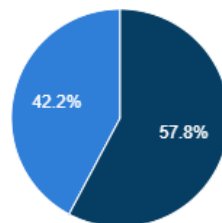
Option	Average Allotted Budget
Active Exercise Space	14.44
Contemplative Quiet Space	31.14

SLIDER: People vs. pets



Option	Average Allotted Budget
Space for People	34.45
Space for Pets	11.24

SLIDER: Natural vs. ornamental

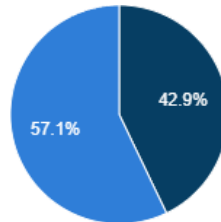


Option	Average Allotted Budget
Natural Landscape	26.48



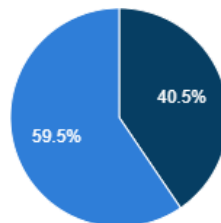
Ornamental Landscape	19.78
----------------------	-------

SLIDER: Communal vs. spread out



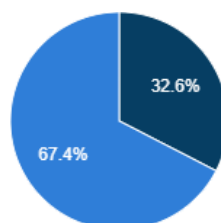
Option	Average Allotted Budget
Communal Seating	18.82
Spread Out Seating	24.91

SLIDER: Movable vs. fixed



Option	Average Allotted Budget
Movable Seating	17.66
Fixed Seating	25.38

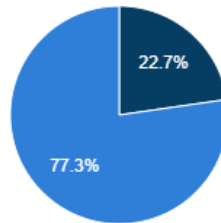
SLIDER: Direct vs. meandering



Option	Average Allotted Budget
--------	-------------------------

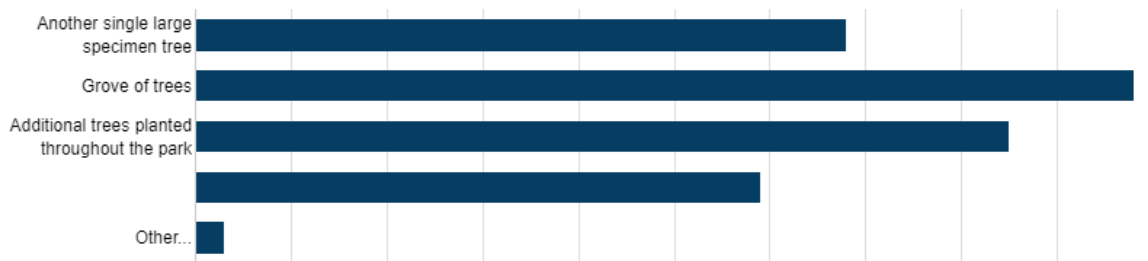
Direct Circulation	14.82
Meandering Paths	29.50

SLIDER: Bikes vs. pedestrians



Option	Average Allotted Budget
Space Dedicated to Bikes	10.42
Space Dedicated to Pedestrians	34.94

We understand that the existing cottonwood tree is important to many of you. The preservation of this tree is also a major priority for the County. However, we believe it is important to have a contingency plan when thinking about the future tree canopy of the park as the tree continues to age, and in the worst-case scenario, does not survive long term. How would you rank the following potential replacements if the existing tree does not survive?

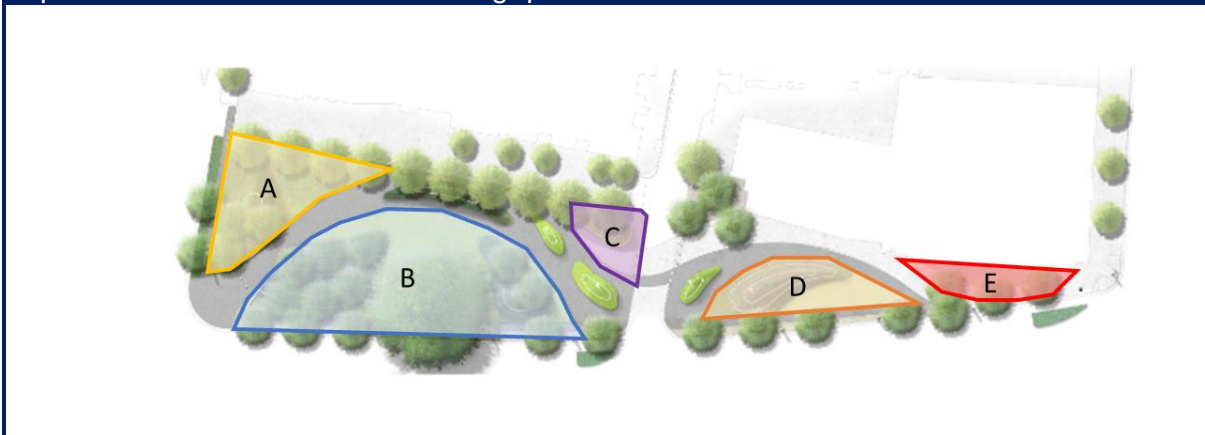


Another single large specimen tree	68
Grove of trees	98
Additional trees planted throughout the park	85

Natural berm with habitat supporting vegetation (i.e., pollinators)	59
Other...	3
Avoid a monoculture of trees	1
Native fruit trees!	1
Select for maximum fall foliage color	1

Please answer the following questions for CONCEPT 1- THE MEANDER

Please refer to the following graphic as it relates to Concept 1 and this portion of the video or presentation to answer the following questions.



What aspects of Concept 1 do you enjoy the most?

Natural landscape and no playground or dog run.
Meandering path
Different uses for the park in one space but not all on top of each other.
Opportunities for creation of meadow/pollinator/native wildflower habitats
losing yourself in nature with berm sound mitigation from street
Nice balance between the pathway and the green space
the large canopy tree and the curvy path
more land and trees
Greenery
Areas B, D, lawn areas are important.
immerse natural walk
Trees
natural berms, providing organic seating/lounging options. gathering spaces are also organic - lawns and tree spaces

Curved paths "expand" space by limiting sightlines. Berms also help with that by perceived "widening" with topography.
way too much pavement. This is a small site and pavement is unnecessary
Modern design and functionality.
I like that the meander contrasts with the grid of surrounding streets.
We LOVE the trees and vegetation, love the meandering path and its not too busy, its not a very large space after all.
THE PURPORTED TREES
That it is fairly simple
The trees
Walking trail
Plaza with flex use that unites both sides of the park.
Natural setting
The most green and quiet, the curving walk is a nice contrast from the surrounding street grid
Layout
How there is less excess development than the other concepts
Large green space
Meandering road, bike-free
Green space
Amount of "natural" space, trees, meandering nature
wavy path, shade space and open space, natural seating areas, connection between park spaces

the meandering nature of the path
trees
B - having shade by being able to sit and relax under the trees would be great
The amount of greenery, the meandering path
I like the meandering, natural aspects
non-linear
Winding walking path
Meandering pathways
Meandering path
Separation of spaces and pathway
the green nature, the berms, plaza space, trees
Natural landscapes
amount of green space and vegetation; preservation of large tree or if necessary, a grove of trees in its place
Given the amount of space and the fact there is no need for a straight path, the meander is the best choice.
trees
Trees
Tree canopy and greenery
nature
Trees

Green space
B
plants
The curving pedestrian pathways and trees.
B
The pathway and park seem to create an enclosed, quiet atmosphere despite being so close to the city area
Meandering path
The winding path
I like this concept the best. I like the meandering path, it provides for a private and peaceful walk but also social areas
B
The meander and the amount of natural vegetation.
trees, shade, greenery, not conducive to fast cyclist cut-through, refuge from Crystal City/Petagon City concrete canyons
b
Not much
undulating path, emphasis on natural plantings, undulating plaza crossing 11th St., large green area for informal use
trees
The encouragement of "slowing down" with reasonable multi-use. (It can't be ALL things to ALL people.)
B

walkability
B
walking path
E - Plaza with Seating
Indirect path
Direct path to intersection. Many Pentagon workers. Less damage to landscaping.
The Cottonwood tree, The meandering path
Walking paths.
Trees
A, B, E
pathway
Berms
The meandering not a fixed path
Leisure, relaxed space in the city
no comment for this design
B
Curving paths, shade
The amount of buffering the trees would provide from the road. That the path isn't straight and allows for just strolling
good use of space



B
Large natural tree space in the northern parcel
Berms and lawns
lots of trees, nice meandering path
The interesting walking path
The meandering walking path
The sinuous flow through the park.
Clear path for walking and maybe slows down scooters/bikes.
Lots of trees and natural landscapes
meander with green reminds me of Boston Greenway - very pleasant to walk on and admire the plantings
Section E providing seating for future retailers, and sections B/D providing readily programmable lawn spaces.
I like the meandering path
Lots of trees
Natural, meandering bermlike topography
The meander has a relaxed, natural feel.
Boardwalk, berms, feature walk
Relaxed nature of the slow walk through the park; sense of being in nature; refuge from surrounding buildings
Simple
Lots of nature, and I like the meandering path

Curvilinear
park fits the location with noise buffers, green space, and plaza gathering space close to retail
b,a, path
The connection that section E has to the future retail/restaurants is important, especially due to increase in outdoor dining.
I like the large open spaces provided by B and D, and the potential retail seating of E
treed area
walking path, additional plants/ trees
A,b, and z
The gathering space
The berms and use of screening plants
meandering path,
The meandering path that makes the space appear larger.
lots of native trees
b
The winding path
I am not a fan of Concept 1
It is pedestrian friendly. More vegetation.
B should consider a bicycle playground area or bike park to accommodate youth
Feels more natural, minimizing straight lines.

Variety of views, potential for plantings & habitat, ability to tune out urban noise
The majority trees and nature to impermeable surface
meandering path for pedestrians
Natural space

**What aspects of Concept 1 do you think could be better?**

None
Bridge over 11th street
Limit width of meandering path to 8 feet or less. Eliminate lawn in Zone B. Minimize impermeable surfaces. Eliminate Zone E.
keep dog presence to a minimum; PenPlace across the street is supposed to have a dog park
The synthetic berms need to go away. A more natural ivy or plant should be used instead
eliminate a lot of the concrete
more land and trees
Create fewer places for homeless to gather
Designated dog space
More walkway
Suggest a designated area for dogs so lawn areas B, D are not used for dog stool.
no dog park
Dog run/park

<p>i like the 11th street crossing that ties that area to the park more than road-safer for pedestrians</p>
<p>Less use of berms, which are questionable if intended for seating. This design splits up the walkway at the cost of open space.</p>
<p>Add a moving water feature, using berms and gravity for a small, naturally flowing stream. Combine with stormwater vault.</p>
<p>Water feature</p>
<p>Need some color, Pentagon City is a vibrant if random place, we love that and would love the park to reflect that personality.</p>
<p>STILL TOO MUCH HARDSAPE/PAVEMENT, WHERE NOW THERE IS LITTLE OR NONE. REDUCE THE HARDSAPE, INCREASE PERVIOUS/NATURAL SPACE.</p>
<p>I think it's too small a space to be a meander, plus Met Park nearby will have that concept. Better more direct</p>
<p>Too much space that looks like it would just be used by dogs for restroom activities</p>
<p>More grass open areas</p>
<p>The meadow sounds pretty to look at but we really, really need a place to toss a ball, lay in the grass on a blanket in the sun.</p>
<p>Too meandering, needs more direct alternative route/cut through</p>
<p>Make sure there is comfortable seating- I fear that dog uses would make the grass unsuitable for sitting</p>
<p>N/A</p>
<p>more seating</p>
<p>Too much space for people</p>
<p>No dog park</p>

Less paved, wide road. More natural, narrow road.
Reduce amount of Hardscape
too noisy
There is not a lot of seating, it's seems like it's designed to be passed through. I use parks to relax w friends
too busy noisy
Needs direct access to Altaire via front door. Otherwise patrons will just cut through the trees. Make it easy for them
Dog areas
More multi use
I think it's hard with lawns and the number of pets in the area to keep them from becoming dogs' bathrooms.
Seating
I do not like the high concrete berms at the entrance from Army Navy drive.
More meander
A,C
Dog run, fitness equipment
too many paths/trails
E
Less concrete and an enclosed dog area
Specific area for pets
Path looks a bit narrow, social area is small

Don't like it
Concept 2 better
add water (fountain, pond, reflecting pool)
e
It seems to not link with the community - it is not uniting
no synthetic turf
A
not sure
more flowering plants
I like it as is.
More space for pets
Too many trees. Not enough open space for dogs
C
Informal meeting place
no comment for this design
C
Maybe some seating?
Would like to see small seating amongst the trees
N/A
C

Is there a more direct pedestrian route?
Not requiring bikers to dismount
most dangerous crossing of 11th (meanders, poorest sight lines); no bike access; no dog facilities, plaza too small to be useful
Could be a few nook Seating spots/zones
While it seems like a serene space, I would like the option of a gathering space, I like the idea of having a farmers market
Fewer berms and paved stretches
The high concrete berms look cold and corporate. Like an office park that you're not meant to hang out in.
Provide more seating space
attractive shrubs and plants - see Boston Greenway for ideas
I do not understand the large berm in section D. It feels like it dominates the space.
The areas are not clearly delineated and there isn't an area designated for dogs.
Adding some gardens would be nice
Not thrilled about the sloping entrance wall at the Eads/Army Navy corner. Why not a more classic looking vertical stone wall?
N/A
seating - add it all along the path, in nooks off the path, in hidden areas near the path
More small paths
Purposeless

<p>what's the draw besides lunch breaks to the park? It will be like all the Crystal Drive pocket parks w/out a draw or connection</p>
<p>d</p>
<p>Will the synthetic turf berms look out of place? That will need to be an important detail to execute if approved.</p>
<p>It feels like the berm in D occupies a lot of otherwise usable open space</p>
<p>less pavement</p>
<p>more seating</p>
<p>N/A</p>
<p>Main sidewalk along street makes it easy to bypass the park.</p>
<p>fixed seating so wind does not move furniture around</p>
<p>Might be focused a bit too much on the path.</p>
<p>less concrete bulk along path - incorporate native stone instead - use boulders in section D</p>
<p>e</p>
<p>Add seating</p>
<p>People design 'meanders' and then anyone trying to get someone is driven crazy by the ... meander.</p>
<p>It treats 11th Street and the adjacent Eads St bike lane as external elements. They both need to be integrated into the design.</p>
<p>Space marked B should be a pump track</p>
<p>Add bicycle infrastructure like a small bicycle pump track for youth</p>
<p>Bike area for kids. I'm not loving the idea of pet facilities. Also, there seems to be a lot of hard surfaces.</p>



Appreciate some features of canal walk and central hub
Add native flowers
there could be an enclosed space for dog walking
More people friendly

Seating is a great amenity in good urban parks. Which zones pictured above do you think are most appropriate for the following experiences? in good urban parks. Which zones do you think are most appropriate for the following experiences?

	Zone A	Zone B	Zone C	Zone D	Zone E	Not appropriate in any zone
Sit and relax quietly	44	78	14	14	4	7
Work remotely	23	18	16	35	34	32
Eat lunch	18	45	5	47	34	8
Hang out with a group of family or friends	14	82	9	39	8	9
lounge with a good book	33	67	19	18	12	9

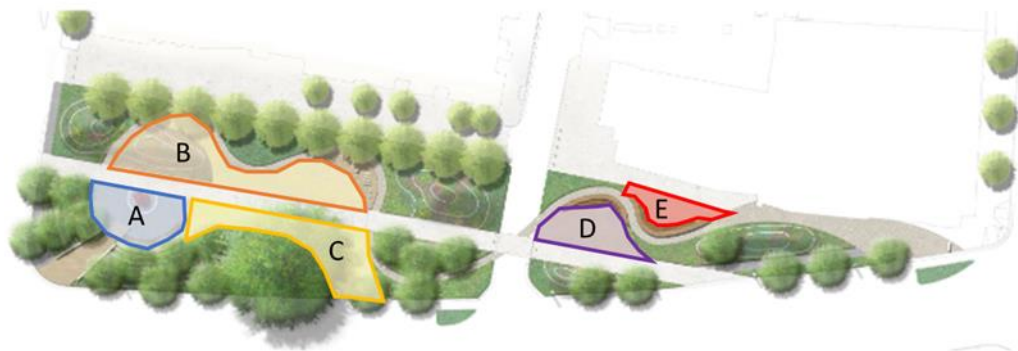
Being outdoors is a great place for being active. Which zones pictured above do you think are most appropriate for the following experiences?

	Zone A	Zone B	Zone C	Zone D	Zone E	Note appropriate in any zone
Yoga with friends	28	57	10	26	5	26

Playing with your dog	8	51	5	17	15	60
Warming up for a run	22	26	17	33	32	20
Tuning up your bike	10	6	15	26	33	65

Please answer the following questions for CONCEPT 2- THE CANAL WALK

Please refer to the following graphic as it relates to Concept 2 and this portion of the video or presentation to answer the following questions.



What aspects of Concept 2 do you enjoy the most?

Uncluttered path along Old S Eads
None
Nice wide path down the middle that's easy to traverse, but also a nice little trail for other meandering. Zones are separated.
Trees. Opportunities for creation of meadow/pollinator/native wildflower habitats.
meandering path
I like the direct path option for people who are just walking through and the winding option for people to enjoy the space
trees
It has an exercise area. Suggest this area being a Calisthenics area.
celebrating natural
Trees
Amount of green space
natural berms and historical markers

The historic alignment to Old S. Eads and the creation of multiple distinct open spaces.
Berms and natural areas.
Its ok prefer concept 1 its kore modern and goes with community
Focus on history of the area
Love the trees and wander path.
TREES
The straight pedestrian path that reflects a desire line
Looks best because it will be least abused by dog owners as a space for their dogs to go to the bathroom.
Straight path
I like the idea of a tech hub space. I live in Altaire and we really, really need a dedicated dog space. PLEASE!!!
Mix of nature and useable space
Outdoor workspace concept with WiFi and power is by far the most appealing proposed feature to me
The paths!
Straight walkway enables a large green space.
Fitness/exercise space
More natural greenspace
None
bike path through park, ample shade options
the water feature

trees
B, C, D, E - LOVE THIS CONCEPT. I LIVE for a winding walkway
quiet and relaxing; people oriented; no focus on bikes, dogs, events in a small space in busy area; such features Pen/MetPlace
The amount of greenery
Functional use of space.
Direct path
I am not fond of the straight canal walk -- but am delighted that a park will be there.
easy access from Army Navy drive.
direct path to army navy as many military walk this path to get to pentagon
the sightlines seem more open, the history information
Celebrating nature
overall green
Of all the concepts I like this least. It is a straight path to nowhere
most people-areas are shielded from streets
Meandering
nature
Open, with good views for safety
Large areas of open green space
fitness equipment

one straight path
Lots of trees and curving pathway.
D
The vegetation and shade, as well as the multiple large green spaces
The plant buffers
Different areas
Easy to navigate, good mix of open areas to relax
All
A, B, C, D, E
Natural vegetation and shade.
trees as buffers
Do not like this concept
I love the benches and the versatility of this area
artwork
both straight and meandering to split off cyclists
incorporating history
c
meandering path
A
trees

A - Park Entrance from Army Navy - Eads to Plaza
Historical context to park, similar to long bridge park
Sheltered from road and building.
More open space for dogs
B, C, E
the meandering path
more dedicated areas to hang out
I like the great mix of a path to pass through, and one to enjoy the park area. Also like how areas are moved away from roads.
no comment
Trees and seating
The historic links, and the seating area A for possible group activities
nice direct path
D
There seems to be a more direct (straight) pedestrian route through the park for those who need to pass through
Central bike route
historical signs, wayfinding, straight shared bike-ped path with safest crossing over 11th, tiny dog facilities, meandering path
The outdoor fitness and nature appreciation
Closer proximity of treed areas
Both meandering and straight walking paths, and landscape at eye level.

Good balance of accessibility/walkways and natural landscapes
The open lawn area of B and C and the platform benches of E.
I like the specific areas for different activities
See the canal
more space together rather than broken out
The buffering from the Altaire
Artwork, lawn, path
wandering path, chance to clear the mind; people "on the move" need not conflict with wanderers.
Ties to history
Green space
Aesthetic and multifunctional
good mix of activities, recreation, relaxation, green space with connectivity and options
c, b, a
I really like the platform benches at sections D & E. That combined with the retail plaza are very flexible spaces.
I like the fixed seating in E
treed border
I like that the large path cuts thru the park and encourages pedestrians to go that way.
fixed seating
The open space.



native canopy trees
a
Platform bench
ALL OF THEM! It is a great park to hang out in, and a key corridor for pedestrians and bicyclists. Thank you.
More vegetation
Provides areas for distinct activities
While I like the aesthetic of Nature zones the meander, the straight path leaves more room for natural zones.
History references, straight walk as desire line for many pedestrians, easy access, pockets for different uses
The amount of nature
Meandering walk, natural vegetation
path (similar to the Meander, this path also curves in different directions)
Natural area

**What aspects of Concept 2 do you think could be better?**

Seating
Bad idea to mix bicycles with pedestrians and especially children or seniors. Where is the canal or a stream?
What is the difference of width between main trail and little trail? Would the little trail be too little?
Remove the central straight walkway/bike path. Remove Zones D & E. Reduce pavement and hardscape, especially at south end.

plaza for social gatherings not needed or wanted
More seating options
dog space
Create fewer places for homeless to hide and gather.
The addition of seating is dangerous for the area. It will attract the homeless and lead to crowds at our building.
Designated space for dogs
Multipurpose path, bicyclist should not be allowed thru the park. There are plenty of bicycle facilities in surrounding area.
outdoor fitness
Dog run/park
the straight path feels like bikers may go full speed and disturb others
There is still too much emphasis on berms, especially as you move south through the park.
Even a main path can have a slight curve to it, which is a more natural way to raise awareness of shared use and other users.
way too much pavement
Nicer flow
Hate the idea of bikes going down the middle. They don't need a park for that, such a waste and splits the park even further.
WAY TOO MUCH HARDSCAPE/PAVEMENT. REDUCE THE PERCENTAGE OF HARDSCAP/PAVEMENT AND INCREASE GREEN SPACE.
No gathering space
More shade trees

More open grass areas
The cycle path chops the park in half. People coming from the Pentagon aren't going to want to meander on the walk
Needs separate area for dogs
Don't think bikes need to be passing through the park, it isn't big enough so bikes should use the surrounding streets
More grass space
Remove all seating and gathering areas.
No fenced dog area
Less chance for any speeding on the middle, straight road
move the straight walk to the Apartment side instead of breaking up A,B & C for cyclists
All
bike path is too straight; curve it some to help decrease speeds on that path. Locate it at the edge of the park, next to stree
have the water feature meander a bit, not be so straight
too noisy
A - I think the plaza should be more Concept 3
I think it's best to keep the bikes on the road, not going through the middle of the park.
Access to Altaire front door.
Straight path will be used by bicyclists and disruptive
no larger open space, too many trees on edges cutting into the actual space

Is it trying to cram too much in? Attention to how to keep lawns from being dog spots only.
Outdoor fitness
understand the canal concept but straight line walk will turn into a biker raceway
It should not be used as a pass through for bikes. Central walkway cuts up a small space
this is too small a park to "get lost in" so I prefer concept 3 with specific uses
Smaller straight line path
path
A B C D E
dog run
E
Bikers should walk bikes or go around the park; straight Promenade seems to "city-like" rather than a quiet escape
None
Is this path just another street? What makes this a park vs a trail?
This is a bit boring, the meandering path is prettier
too chopped up; straight middle path encourages fast scooters, skateboards, cyclists (not relaxing walking, sitting, as refuge)
Get rid of straight path
An area for outdoor events and concerts perhaps
No straightaway esp. for bikes. Too much pavement, dangerous. Not enough quiet spaces. A/N Drive too loud for berm seating

tries to appeal to EVERYONE, which means that no one will be happy.
D
not sure
B
add art work or flowering plants
E - Platform Benches - Not sure how this seating will work, would like to understand it better.
West end of canal walk is not at a crosswalk
Area for slightly larger groups, events ( like farmers market)
Flow of pedestruan traffic between buildings and intersection.
Zones are set too close together for a quiet area
D
Straight walkway
zone E looks a bit dry compared to other areas of the park
no comment
Don't like bike path through the middle
More natural looking landscape, it's too straight, I fear it'll be used as a normal path rather than a park.
not a great use of space
Finding a larger contiguous open or natural space
can art be a fountain/water element? and add more green on the southern end? combining meander and straight crossing needs work

<p>Its one straight path which isnt as interesting.</p>
<p>There could be more usable space</p>
<p>Design looks like a paddle stick with a curved noodle stuck on for connectivity</p>
<p>Make the artwork plaza smaller so there is more permeable surface</p>
<p>The multi-purpose path running down the middle of the parks, eliminates otherwise functional space.</p>
<p>the park feels like separate areas and not a cohesive whole</p>
<p>Needs more trees</p>
<p>The central walk does not depict a canal. Unless there is water, the allusion to the canal is not useful. DC has a Canal Park.</p>
<p>N/A</p>
<p>The straight path could be more curvy to make walking through the park more fun</p>
<p>plaza for retail congregation perhaps; keep the main artery natural (dirt/garden) path to slow the traffic; shade variety</p>
<p>path</p>
<p>Is the berm in the lower parcel too dominating? It is difficult to understand scale at this stage of design.</p>
<p>The artwork and direct path occupy too much space....it really reduces the functional space of C and B</p>
<p>center path totally splits the park in half, creating wasted space. will just be a cut-through and not an active space.</p>
<p>outdoor fitness</p>
<p>I'm not fond of the very straight path.</p>

too much pavement and turf, no plaza or gazebo - too hot in summer
I am very pleased with Concept 2
No bike path. This is a bike friendly area with excellent pike paths. The park should be for pedestrians not bikers.
It treats 11th Street and the adjacent Eads St bike lane as external elements. They both need to be integrated into the design.
A, B & could be a pump track with bridges to go over the path
incorporate youth activity area for a bike park
Addition of bike areas for youth. The feel of the park. It feels too much like "lunch at an office building" for me.
maybe programming opportunities? Like/don't like the straight walk; see how people trample when meanders used
Add native flowers
More than one centerpiece significant tree
there should be an enclosed space for dog walking
None

Seating is a great amenity in good urban parks. Which zones pictured above do you think are most appropriate for the following experiences? in good urban parks. Which zones do you think are most appropriate for the following experiences?

	Zone A	Zone B	Zone C	Zone D	Zone E	Not appropriate in any zone
Sit and relax quietly	24	46	37	8	12	11
Work remotely	18	17	15	30	36	20

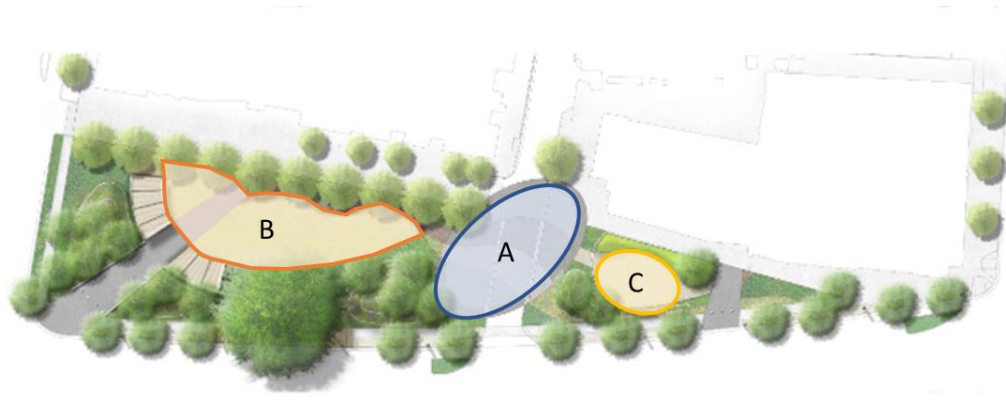
Eat lunch	17	34	10	32	36	8
Hang out with a group of family or friends	19	54	34	18	3	11
lounge with a good book	28	35	44	12	11	8

**Being outdoors is a great place for being active. Which zones pictured above do you think are most appropriate for the following experiences?**

	Zone A	Zone B	Zone C	Zone D	Zone E	Not appropriate in any zone
Yoga with friends	15	50	23	17	6	25
Playing with your dog	8	32	19	17	12	50
Warming up for a run	31	31	12	26	20	15
Tuning up your bike	23	6	5	19	29	52



Please answer the following questions for CONCEPT 3- THE CENTRAL HUB  
 Please refer to the following graphic as it relates to Concept 3 and this portion of the video or presentation to answer the following questions.



What aspects of Concept 3 do you enjoy the most?

Vegetation
None
The open space is a lot bigger and easier to use.
Nothing except the trees.
berms and cottonwood
The open field space
trees
Designated dog space, large community hub
Big lawn area.
dog friendly
The trees and curvy path
Amount of Green space and the layout
A- seems to visually tie to park and discourage speed/unaware driving

The consolidated open space is nice and the plaza at Zone A opens up future opportunities and design coordination with PenPlace.
Not interested in this tiny park having dedicated "active" features typical of a recreational park or public plaza.
Meh dont really care for it
Designated, enclosed dog area
Love the shade and all the trees
TREES. A SLIGHTLY LESS ARTIFICIAL-LOOKING, SIMULATED DESIGN (W/RESPECT TO THE SMALL AMOUNT OF GREEN SPACE) THAN OTHERS.
The big green gathering space and the 11th st at grade
The trees
Trees
My fav! 11th St. Plaza is perfec, dog space, lawn for sun and events, shade structures, the paths are direct for Pentagon peop
Idea of food trucks is appealing if it doesn't result in too much paving
The plaza/open space
Maximize green space
Fenced dog area
Bike-free, human-friendly, private features
Hate this one entirely
Number of trees
Open space surrounded by trees; ample buffers from urban space

trees; shade
A and C
The meandering walk
This is my second choice -- it seems to be well suited for community events
2 main and large spaces.
larger clear spaced]s
There's a dedicated dog area and open space, but most open space in this area becomes solely used by dogs. Can B be protected?
Dog space
good for shade...pavement across 11th street
Has open gathering spaces, Social activities would work well
place to have farmers market; dog area (assuming none at Metropolitan park); marked areas are away from roads
Trees
peaceful
Space for a market; trees
dog run
specific dog area
Plaza space had nice appeal.
A
The opportunities for community events, the wide open spaces, the specific dog area

All of it
Dog Friendliness.
Good mix of social and outdoor space, easy to navigate
Don't like--its too cramped
Shade
A large place for group gatherings.
none
Amt. of vegetation. Shade. Plaza across 11th t.
That it pulls people together.
c
integration with 11th street
B
trees
Shaded seating
Of the three, seems to tie north and south together the most
Seclusion
Dog Park
There's a space to do anything & everything
A
almost all aspects

multiple directions of paths
Lots of open space
A separate area for dogs. There is a need for dog space, especially if it does not impact non dog lovers.
Not sure...this is my least favorite
the amount of buffering the trees provide from the road
C
Area B by the cottonwood looks like it could be a innovative park element - raised paths reminds me of Asian (Japanese) garden
Shade
dog run (but it's still small and doesn't support big and small dogs) (overall I don't like design)
The gathering and event hub
Love the plaza and the opportunity for farmers/art markets
Coherence and green space
Enough space for farmers and street markets, food pop-ups.
Lots of trees
The large open space of B.
The centralized green spaces and dedicated dog area
None of it
The protected, enclosed section B
Lawn, boardwalk

opportunity for weekday/weekend markets
pop-up programming space
Green space
the central plaza (A) and additional trees and shade; also water reclamation (permeable pavement)
b, a, c, path
N/A
B has a lot of nice open space
trees and small green space patch
I like the shade features built in
shaded spaces
The open space at zone B.
native canopy trees
c
The plaza
Not a fan of Concept 3
Vegetation
Larger areas for inclusive activities
I like this design. It's funky.
larger spaces for activities or events, easier to program spaces
Lots of trees

dog run and shade structure
Natural areas

**What aspects of Concept 3 do you think could be better?**

Removal of playground or exercise area and dog run
Remove the large open areas. Bad in summer and certainly not good for social distancing.
Remove nearly all of the hardscape, pavement and mowed grass. This is the worst of all of the three concepts.
don't make this casual use park a social gathering place
I don't like the concrete plaza section
eliminate the shade structure it is a high maintenance and kind of unattractive
Create fewer places for homeless to gather.
I do not like seating and gathering spaces. Homeless people will simply use them and then attract them to where I live.
No need for Shade Structure, point of park is to be out in the sun. Not sure how useful plaza would be with cars driving thru.
social gathering space
Bigger dog run
feels more programming focused than individual use focused
Built-in seating at the south end could be used for both lunch from adjacent retail space and watching the dog run.
see above

way too much pavement
Can do without the dog park. Last feature needed is dog park. This area smells like dog piss
Connection to retails shops.
Its small to have big areas for events or a dog run (though needed in this area), if we can't do it well don't do it.
WAY TOO MUCH PAVEMENT/HARDSCAPE. REDUCE PAVED/HARDENED SURFACES, INCREASE PERVIOUS GREEN SPACE. NOTHING CAN LIVE IN HARDSCAPE.
Given the nearby buildings, shade is unlikely needed. We do not need a dog run here, so close to the one at Met Park
B looks like it will be used as a dog restroom.
Less dog runs...they are not respected by patrons and look ugly and unmaintained
I'd narrow the walkway at the corner of Eads & Army Navy for even more buffering and that wow factor when you get into the park.
No dog enclosure- dogs will use the park, but shouldn't attract them when there are other larger parks nearby
I don't particularly like the oval shape of the plaza.
Too much space for people and pets.
More distinguished spaces and their functions
Way too much hardscape, when there are several other nearby parks for event space.
Not enough natural habitat
B - it's very shared green space. Would be harder to find little nooks or trees for yourself / friends



<p>Not a fan of the dog play area (just look at the mud hole in the park by Amazon to see how nasty they can be)</p>
<p>waste of space.</p>
<p>Clear and easy access to Altaire front/main door.</p>
<p>space for kids, seating</p>
<p>Smaller dog run</p>
<p>least favorite option...too much activity for small park</p>
<p>This concept needs to avoid the sterility of some Crystal City greenspaces. Do not support the dog run</p>
<p>for remote work, will there be wifi?</p>
<p>Not sure what A is, with the road there.</p>
<p>more areas for a variety of activities and peace.</p>
<p>Zone A is too large. It needs more trees.</p>
<p>B, A,C</p>
<p>fitness equipment</p>
<p>not a lot of walking room</p>
<p>Doesn't seem like there is enough overall area to support a dog park.</p>
<p>C</p>
<p>Creation of one or two small private areas with vegetation</p>
<p>None</p>
<p>Prefer several small pockets of social areas to one crowded/noisy one unless there is a large movie screen or something</p>

A
Not enough green space.
very urban--looks like a pocket park between highway and highrises
all
reduce amt hardscape pathways
That it pulls people together!
a
not sure
A
would prefer a walking path
Market area is not large enough to reach critical mass necessary for a successful market
Flow from building to Intersection. There will be trampling of vegetation.
Add another zone & a little less trees
B
no dog area
really eliminates the relaxing area and a lot of the nature aspects. Last choice of the three.
With new dog runs being built at Metropolitan Park, I don't think it's worthwhile to lose space to a dog run in this one.
A
Don't like the Area A by the primary driveway for LCOR development. It will never be that ped friendly area envisioned to be.

Remove dog run
can't have plaza in the middle of 11th! this is the most dangerous of 3 crossings. bollards are bad idea for any plan
There isnt an interesting walking path like with the meander concept
a water feature (fountain) would be nice
Dog run seems unnecessary if Amazon park is also going to have one.
Less plaza space and no dog park
A doesn't appear to be functional space.
seating in the plaza area - perhaps along the outside.
The design needs more green space. It's going to be VERY hot in areas A,B, and C
not a lot of usable, open space
I am not sure if the A section will ever work as a meeting place, with 11th St. there.
Not sure about shade structure/maintenance
use other than area A for weekday markets (traffic conflict)
More small paths to walk on and enjoy the space
Should NOT be a workspace
a defined path through the park connecting the spaces; ensure the lunch/work/retail space is effective; lawn for recreation
I think the dog run space in C is too dominating for such a small parcel. Other uses are more appropriate.
"A" takes up WAY to much useable space

zone a is overly paved
movable furniture / windblown around
The lack of a sense of through movement.
too much pavement and turf, no shade over turf and plaza
a
Direct route for cyclists and pedestrians.
It treats 11th Street and the adjacent Eads St bike lane as external elements. They both need to be integrated into the design.
The space below the path should be a pump track
open up space for youth activities like a bike playground
features of other 2 concepts ;)
Incorporate native flowers
plaza
None

Seating is a great amenity in good urban parks. Which zones pictured above do you think are most appropriate for the following experiences? in good urban parks. Which zones do you think are most appropriate for the following experiences?

	Zone A	Zone B	Zone C	Not appropriate in any zone
Sit and relax quietly	16	75	23	19
Work remotely	16	53	36	27

Eat lunch	18	65	41	12
Hang out with a group of family or friends	28	80	12	15
lounge with a good book	14	76	27	16

Being outdoors is a great place for being active. Which zones pictured above do you think are most appropriate for the following experiences?

	Zone A	Zone B	Zone C	Not appropriate in any zone
Yoga with friends	23	69	18	23
Playing with your dog	9	44	45	40
Warming up for a run	30	40	44	17
Tuning up your bike	34	14	35	50

**Did we miss something? Please share any additional thoughts that might not have been covered earlier:**

Thank you so much for requesting feedback. I've lived in this neighborhood in apartments and condos since 2007. Long bridge has been one of the greatest developments in recent years, however, it includes a ton of playground space that is rarely used because families with small children cannot afford to live in this area. Young and older professionals and empty nesters are the primary residents and we are not looking for playgrounds or more dog runs. There's plenty of room for dogs to play at long bridge. Unfortunately, some visitors fail to respect the leash law and that is a real problem for runners. Please consider adding signage about leashes. Also, please know that when a temporary market was permitted in the evenings in the lot across the street from Whole Foods, it was incredibly noisy because bands were permitted. If a market space is permitted, please consider some sort of zoning or code that will not permit the use of speakers. The old street market along crystal drive did not include loudspeakers and it was very popular. Also, we miss the outdoor movies at S Bell st. If it's possible to revitalize a space for outdoor screenings that would be great. Thanks again!

Please include restrooms and water fountains. Do NOT mix bicycle traffic with the pedestrians strolling around or children playing.

Include a pedestrian bridge to cross the 11th st.

Arlington County in general, and Crystal City in particular, has too many buildings, too much hardscape, too few natural areas and too many mowed lawns. Recent efforts to devote public open spaces to "casual use" spaces with grassy lawns, dog runs, walkways, bike paths and paved plazas is worsening this.

In 2016, the Arlington County Board adopted a "Monarch Pledge" in an effort to increase habitat for monarch butterfly reproduction, honeybees and other pollinators. To implement this pledge, planners of public open spaces need to include extensive plantings of native milkweeds (especially *Asclepias syriaca*, which survive well in Arlington and which monarchs prefer when reproducing).

The plans for this park must therefore include extensive plantings of milkweed and other native plants that support monarchs and other pollinator species. None of the three concept plans provide enough space for large areas that contain these types of plantings.

Further, in 2020, the County Board adopted a resolution that declared Arlington to be a "Biophilic City". This park will not help make Arlington a "Biophilic City" if it contains more than a minimal amount of hardscape, walkways and bike paths or if it contains paved plazas, mowed lawns, exercise areas, active recreational opportunities and meeting areas.

None of the three concept plans will substantially help Arlington fulfill the goals of the "Monarch Pledge" or the "Biophilic City" resolution unless they are

substantially modified. The planners of this park do not appear to care very much about the County Board's recent initiatives to connect people with nature. They have developed three concept plans that will use a new park for purposes that are incompatible with the "Monarch Pledge" and the "Biophilic City" resolution (such as converting parts of an existing green space to an area with paved paths, meeting areas, seating to help nearby retail businesses, dog runs and exercise areas), as well as for other purposes. This is regrettable.

The County's planners recently designed the nearby Metropolitan Park, which devotes much space to dog runs, exercise areas, "casual use" spaces with mowed lawns, etc. They now appear to be repeating this, thus creating a largely redundant facility that will again negate the County Board's recent initiatives.

In this regard, it is important to recognize that the majority of respondents in the first public engagement opportunity favored natural areas and landscape over active recreational uses and hardscape. The three concept plans (especially concept 3) fail to adequately reflect this. Each would add pavement to an existing park that presently contains none.

Keep in mind the planning for PenPlace. It may change, but there was a lot of consideration for social gathering spaces, dog park, and children's play area.

You all tend to go overboard with the concrete in almost every park design that comes out no matter where it is. Your designs will almost certainly kill the large cottonwood because of the root disturbance.

keep natural what little land is left in Arlington

Very afraid homeless and crowds will ruin this space.

This park is something that could impact where I live, at Altaire. There are many homeless people in the area and adding seating and water features is going to leave this space as a place where they live and sleep. If seating is allowed, there need to be provisions to keep the space free of homeless individuals looking to set up shop. Additionally, large gatherings are something that is not wanted by our community in front of where we live. We spend a lot of money to live in the building and we would like the park to be a nice place to simply walk through. It should be quiet space where dogs and bikes are allowed. Seating should be limited and gatherings only allowed with permits or small numbers. It should be made to prevent homeless individuals from living there and using the place as a restroom or sleeping place.

Too many spaces are already dedicated to people with dogs. We need more spaces for people where we don't have to worry about neighbors not cleaning up after their pets (major problem now in most of the green spaces). I would be

more interested in a space where I could read, sit/think, without worrying about dogs or cleanliness

Favorite concept is the Canal Walk, expect for the multipurpose path which I suggest keeping as a regular sidewalk to avoid bicyclist from riding thru the park. There are plenty of bicycle facilities surrounding the park, no need to have a bicycle facility within the park.

A suggestion is to include a calisthenics exercise area (within the exercise area in the Canal Walk concept). We already have a park in close proximity (Long Bridge Park) and a big area for dogs in the metropolitan park, so a missing element in the area is a calisthenics park. Closest one is the Arlington Calisthenics Park in Arlington Heights.

Dog run is critical. There are lots of dogs and they will use the park no matter so best to have a place for them.

Please please make sure there is large grass area at the gated dog park. They run better on grass and it gets less dusty. And they would have a place to go for their needs. Thank you! So excited!

I would greatly prioritize many small areas for small group use instead of one or two large gathering uses. the use will much more likely be groups of under 5 than performances or large gatherings.

I like that idea of more shade trees . Less asphalt and more places for dogs to run etc.

A bench to stop and read your phone or a book or rest.

Less trails more grass. Use natural plantings as they will last.

I like many elements of Options 2 and 3, but if I had to choose I would choose Option 2 overall.

Seriously. This is a very small parcel that is activated already. Plant some more trees and leave it alone.

Water features or a fountain mixed in with aome artwork would really work well with the overall theme of crystal city/pentagon city

LOVE that you are keeping the tree, so so happy, thank you so so much. I think you could maybe think more about dynamic shade (I mean shade that



can be moved etc) possibilities as it gets so hot here in summer and it just would make the park more flexible and accessible to more people (the old and young or people who are not well etc) so they can be comfortable and feel part of the community.

I would love to hear more about accessibility as well next time, are the intersections etc going to be easy to navigate for wheelchairs and the elderly. I would love to see everyone able to enjoy a peaceful space. It doesn't seem like such a big space so we don't need a park that does everything, just a nice space with some trees, chairs and a nice path is wonderful. It can't be everything and that's OK. You have done such beautiful work and I love that we got to see it and hear you speak about it.

THIS IS A VERY SMALL SPACE TO BEGIN WITH. SLATHERING IT WITH LOTS OF PAVEMENT AND HARDSCAPE REDUCES ITS ENVIRONMENTAL VALUE (TO HUMANS AS WELL AS WILDLIFE AND PLANTS). HARDSCAPE=MORE STORMWATER RUNOFF; MORE HEAT-TRAPPING SURFACES THAT EXACERBATE THE URBAN HEAT ISLAND EFFECT (UHI) AND INCREASE URBAN-INDUCED RAINFALL; LESS TREE CANOPY TO MITIGATE UHI (REDUCE TEMPS), TO INTERCEPT RAINFALL AND FILTER POLLUTANTS FROM THE AIR. UNHEALTHY GROUND-LEVEL OZONE IS A FREQUENT PROBLEM IN THIS AREA THAT POSES DANGER TO ALL LIVING THINGS, INCLUDING HUMANS. THE EXISTING DESIGNS ARE REGIMENTED AND UNNATURAL. A POOR IMITATION OF NATURE AND OF SIGNIFICANTLY LESS VALUE TO OUR COMMUNITY AND OUR PLANET. YOU CAN DO BETTER!

I think a combination of the themes from the Meander, the pedestrian passage of the Canal and the big gathering space of the third option would be good. I think berms will be hard to pull off, but primarily should be used to shield the northern area from the streets, the southern is too small for them.

Any open spaces will become overrun with dogs as a de facto dog park. Please make sure that does not happen by dividing up the space to smaller areas with nature and trees so it is a park for people.

Pentagon people are going to use this park the most, walking to/from lunch and shops. I wouldn't make the paths too meandering. They punch the clock. It seems like EVERYONE at the Altaire (my home) has a dog and a lot of people aren't too good about picking up their droppings. I believe the dog run is critical here. Just take a look at the dog area behind the UPS Store on Fern St. some afternoon. How many people find the historical info interesting... for more than a nano-second? Please I invest your efforts and our tax dollars into making this park people and --- friendly. It is the only back yard we have.

Interested to learn about planting concepts in the next presentation- want native plants with spring / fall interest viewable from seating areas. Long bridge park and areas near the water are better contiguous wildlife habitat, but want the biophilic benefit of at least some butterflies.

Will there be path lights?

Fix the current sidewalk and leave the rest alone. It's fine the way it is and no further investment or job justification is needed.

This area of town really needs a nice fenced dog area!

Although the COVID-19 is now expected to be resolved after the vaccine distribution, we need to think about more distant, individual relaxation during possible social distancing.

Please maximize the space for trees and berms, and avoid having this become another dog park or bicyclist route. Arlington is putting bike space on our streets, we don't need them zipping through our parks.

We need more trees in National Landing - not concrete, not art, not bike paths. You guys are wiping out trees right and left across from tear drop park - you need to replace as many as you can.

Just a note! That presentation was great! Very happy to add my input

Concept 2 most addresses the needs of the community.

Good job! Loved the youtube video and level of effort on all options. I think access to the main entrance of Altaire is important as well possibly easy access to the N/E corner of the park for people who chose to enter the park if they exit Altaire from the North entrance onto Army Navy Drive (to bypass the lobby). Don't force users to access the park by cutting across grass or landscape areas. Give them a footpath.

need to have seating, both fixed and mobile in large groups and for single individuals

A play area for children will be nice. Already, there are fair number of kids in the area and as house prices increase that will grow. I really like the idea of more open space because the redesign of Metropolitan Park will be more crowded with amenities. However, there is a real need to have separate lawns for dogs and people in some way. There are a ton of dogs who need space, but no one will feel comfortable doing Yoga, relaxing on the grass, or playing

games if there are a ton of dogs relieving themselves in the same area. I'm not sure how to solve this.

Teardrop Park is the best name.

Encourage passive uses and overwhelming green space with existing tree if possible; otherwise, grove to create shade and quiet contemplation.

Please consider this park's plan for amenities as part of the larger greenspace offering. It is too small for a dog run, especially if others are planned nearby. A natural oasis is probably the best use for such an urban spot. I notice that there is no consideration for children's spaces. Have considered a water feature as a way to mitigate noise. Finally, I say this in all my feedback regarding open spaces in Arlington, but I definitely support spending resources on elements that are beautiful in the classical way. It seems like there is an abundance of modern design elements in Arlington and we need more variety and "timeless" features

remote work -- do county parks routinely provide wifi?

dog area -- had to assess without knowing where nearest other dog areas would be

Option 2 provides cut-thru for foot traffic on Eads St beside this park -- but how much is there? I think, not much, so the cut-thru is not a big plus.

Yes - East Falls Church area is always missed :(

Thank you for your thoughtful planning.

The plans seem very thoughtful and consider many needs. I believe that most community requirements have been covered by the planners.

What is a park vs trail? This is not a wide park and if you are not careful, you are just creating a short 'trail', not a park.

What makes a park vs a trail? A sense of something bigger than a than what's on a trail.

<p>All parks should be WiFi enabled/have charging ports etc., would be nice to have area for food truck access, maybe outdoor games (giant chess etc), aim to provide equal amounts of nature and social areas</p>
<p>Arlington does not have many dog parks and they bring a lot of issues with them, but it also encourages people to be in the area after or before work--thus making it safer. There are so many dogs in this area--to turn an office park area into a dog area would be very helpful.</p>
<p>Please maximize native plants and permeable surface.</p>
<p>Please give us shade, (relative) quiet, water that will reflect the greenery and the sky. Minimal concrete, asphalt, metal, (no) wooden box platforms!!</p>
<p>The area needs to fit the mold of the area.</p> <p>It needs a blend of nature, option for seating, for concerts, for charging, for social distancing all amidst a natural, yet manicured green space - look at the Navy Yards or the Rosslyn downtown design changes that incorporates the community and nature</p>
<p>Plan to replace the cottonwood with many more trees. Crystal &amp; Pentagon City have serious tree canopy loss, incl. due to new development. Have signage for natural history elements--e.g. ID plantings, info on stormwater. Use stormwater for increasing vegetation. Plant a bald cypress in stormwater retention swale.</p>
<p>Access for individuals with varying levels of ability does not seem to be explicitly addressed, this should be included. Ensure flexibility in terms of whether people are seated in close proximity. What about lighting and safety?</p>
<p>Don't try to please too many people at once or no one will be happy, nor will they appreciate your effort (unfortunately). Perhaps put the dog area (and I'm a HUGE dog lover) away from where people congregate. I avoid those with my dog as many owners lose their minds in them...it's weird. CC is so close to the huge dog park at Shirlington if folks want to go there. Or there is Long Bridge just to walk your dog, or 4-Mile run , etc. Not every park has to accommodate dogs--and trust me, I like them better than people.</p>
<p>great job!</p>
<p>Keep it natural and keep it quiet!</p>

A meandering walking path and sound barrier from attractive plantings/art work is most important to me.

Again, having a large and vibrant farmers market in Crystal City is very important. To attract the best vendors, it needs to be large. The space allocated for a market here does not appear to meet that criteria. Better to have one market in Crystal City than dilute the market activity with smaller areas. The best vendors will not come.

While the plans for the National Landing area are admirable, we are slowly losing what little open green space we had for kids to just run or play ball. Long Bridge is viable only when there are no soccer games, which is rare. The playground there is not the same as an open space. We lost the open space at the intersection of 23rd St and Crystal Drive in favor of more tables and chairs. We need some open grassy land, and preferably space that can be respectfully shared by those with kids and those with dogs.

Please make sure there is a dedicated place for dogs to relieve themselves.

Please make sure that there are places for the frail among us to sit. We need backs and a reasonable height and depth of seat. The latest trend seems to be backless seats and Adirondack chairs. What's wrong with just a simple bench of wood or even stone with a back on it.

If bikes / scooters / skateboards must be permitted, could they be separated from those of us who are a little unsteady on our feet?

Add fruit tree guilds.

I think pedestrian flow from the entrance of the apartment buildings to the intersection of Eads and Army Navy Drive is critical to avoid landscape trampling.

Small. Other parks in area to be built... it will be busy street... think it should be kept simple, green and a respite.

Please consider that if you would like kids to play safely in this park, you may want to add some protection (line of prickly shrubs, etc.) from the through street on whichever side ends up being more family friendly to prevent kids darting after a ball into oncoming traffic.

Place historical markers in the meander option, as well as the canal walk option

A new dog park (maybe 2?) is being built at Metropolitan Park. With this park being very small, I don't think it's a good idea to use the limited space on another dog park. I'd love to see this as a natural looking environment, as we have lots of open spaces in Crystal City, but nothing that's natural and relaxing, with trees and naturally local shrubs/plants.

PLEASE ADD A DOG PARK AREA!

Considering the small size of this park and also further divided in half by the 11th St driveway, we should not consider dog park/space. Dog spaces are smelly and people with dogs already go everywhere (dogs pee and poo wherever even if owners pick up). I think this park would be better serving as a sanctuary for people in a dense concrete urban area filled with high-rises.

Please focus on: accommodating cyclists, safest crossing of 11th, noise barrier by AND, dog facilities (might be too small for a dog run), natural native plantings, lots of trees, some meandering paths, flexible and fixed seating - used in different areas, keep the historical and wayfinding signage - not matter what the final design it. (and I hope Tear Drop is the name). THANKS!

The first meander concept has a very interesting walking path. But i also love the gathering spot in the central hub, yet the central hub lacks interesting places to explore/walk.

Shade and dog space please!

I really love the plaza option in the 3rd plan. I think it would be great for the community to have events in that space. If there were farmers markets, it would be nice and convenient for local residents as well as local businesses. And maybe there could be an art market where local artists can come and sell their work and be recognized and supported by the community. Along with other events. There could be concerts, movie/film screenings, workout classes, etc. I think the plaza idea holds a lot of potential for communal unity and would be a great use of the space

The canal walk design is the best. The central hub design is the least best. There are enough plaza spaces in the the area and some trees and natural landscaping is really needed. Thanks.

We strongly prefer Concept 1 for the base design of the new park.

You need this park to eliminate the heat island known as Pentagon City. All your designs need more trees!

Please don't spend money on yet another dog park. Let's focus on giving people a park.

My compliments to the Landscape Architects.

The 1st Meander design looks to be the best and will provide a more natural respite in an area that will need it. The Canal walk will further bisect a very "thin" park which is already being bisected by 11th St. Also, I think it is a stretch to emphasize the history of the area with it. Besides, you can put up interpretive/historical signs in the other parks too. As for the Central Hub, given the gathering spaces (and play areas) that were and still should be planned for Pen Place, we don't need them here.

The opening and the presentation at 11th St. looking across to Pen Place will be important. I keep thinking that some type of more formal welcoming wall or sign at Eads and Army/Navy will help any of the designs.

As for dog amenities, I think the county can take a break from them given those proposed for Met Park and Va. Highlands Park. The idea of having pollinators grown in the area where the cottonwood is, is good.

The acreage is so small (compared to Virginia Highlands, for example) that I would not devote any exclusive space for dogs, or such specialized uses as repairing/tuning up...anything. Only design C offers space that seems appropriate for QUIET exercise (yoga, tai chi).

Have electric outlets available for programming

I don't like the short concrete (?) walls in the first plan. I think the gray colors are sad next to the green spaces

combine the canal walk amenities and pockets of flexible spaces with the walkable flex use of the connecting cross street (for farmers market or food trucks) and ample shade opportunities of the central hub concept. Ensure all options for permeable land use, lawns, natural paths, stone/brick street crossing (also controls traffic speed) are considered. The path surface can determine what use it without need for signs or gates. If the main users are expected to be workers, focus on lunch crowd and weekend programming and respite. If we want to draw residents then make more shade, --- friendly, activities (fitness/yoga). Seriously consider a water feature to control noise and draw visitors as well as create the missing meditative space to read the book that doesn't exist in the current plans.

Although these are concept design, I believe Concept 1 (The Meander) provides the best basis of design going forward. It really captures the inclusion of natural features and programmable spaces, along with necessary space for the connection to future retail. The only other item I truly liked in the other

designs were the platform benches in Concept 2 (Canal Walk) as it promotes flexible usage.

I strongly prefer Concept A. It provides the most useable open space and combines several elements that would make this a place I would visit.

Too much pavement in all of the designs. There are plenty of bike paths and a lot of pavement surrounding this area. Residents and visitors are looking for an oasis of green space and natural element to get away from the urban surroundings.

No

All of the designs look pretty good for the small space available.

Elements of the meandering path could be incorporated into a hybrid design. Hopefully the hybrid would include native canopy trees to shade any plaza areas. Please limit concrete. Please include native plants in all areas.

The historical element of #2 is critical, I believe. I grew up in Arlington, and was away for about 25 years, then moved back about 20 years ago. Things always change - that is a given - but change can give life or be soulless. We need desperately to have history brought forward as often as possible, in whatever manner is available. So, I recommend that instead of making historical information/references part of only one of the plans - it should be part of all three. Otherwise, one day this whole area will become another urban/tarmac/cement bungle, lacking any soul, depth, or history.

Please don't design a park in this vital area without a clear through-way for bicyclists and pedestrians -- we really need the connection here.

It treats 11th Street and the adjacent Eads St bike lane as external elements. They both need to be integrated into the design. You are deliberately designing a beautiful landscape, but apparently ignoring the transportation spaces.

DPR, CPHD, DES and Amazon/JBG are also jointly missing an opportunity to rethink the Eads/11th intersection. It seems unlikely that HQ2 will proceed with two east-west streets through Pen Place, and instead propose to continue 11th St straight through. With that site plan and this park, that possible intersection could be planned/designed/built as a beautiful and SAFER roundabout.

Also, is this park going to still have the hideous LED 395 Express Lanes sign adjacent to it? That thing needs to go.



Currently, Arlington's have to travel 30+ miles to find a pump track, robbing kids and adults alike an opportunity to enjoy biking, be active and be outside. A pump track should be included in this park.

Additionally, plans for this park should include protected bike lanes on Eads Street

Please include infrastructure to enable welcoming and inclusive activities like a bike playground or skate park.

Arlington needs a hike track for BMX. Please build a pump track somewhere!!

- The highly vegetated natural landscape and buffer areas seem well suited on the northern portion of the site.

- Children's play elements would fit well on the park parcel given its close proximity to residential buildings. Natural play elements in the landscaped areas to the north would be a nice way to integrate these features.

- Program elements like a dog run would work well on the southern portion of the site.

- Primary circulation that emphasizes pedestrian crossing at the crosswalks similar to the route shown in 'The Meander' will connect nicely with the PenPlace design.

- The direct circulation as shown in 'the canal walk' is less compelling without a true destination at either end - particularly the North.

- PenPlace will have several flexible plazas and space for markets which may reduce the need for flexible plazas on this site.

- The most southern tip of the site presents a great opportunity for public art as a prominent location and visual beacon at the termination of the axis coming from the neighborhood.

Thanks, I think you covered wants and needs pretty nicely

Only interested in the canal option.

Thanks,