

PROFILE 2013

A Supplemental Factsheet - Migration

MIGRATION TO AND FROM ARLINGTON COUNTY, VA

As a complimentary piece to Profile 2013, the Planning Division periodically releases supplemental factsheets on highly valued statistical elements and trends. This supplemental factsheet focuses on migration patterns of Arlington County residents.

ARLINGTON IS A COMMUNITY RICH IN CULTURAL DIVERSITY

28,860 individuals move to Arlington County annually. This is equivalent to 79 people per day. The majority, 25,203 persons, are from locations throughout the United States. The remaining 3,657 individuals, move to the County from foreign locations. Arlington's diverse community attracts individuals from around the world at a rate of 10 persons per day. These new residents move to Arlington from Asia, Africa, Central and South America, Europe and other locations.

RESIDENTS STAY IN REGION, MOVING IN WESTERN AND SOUTHERN PATTERNS

Residents of the Washington, DC Metropolitan Area tend to stay within the region and migrate to the west and to the south. This pattern is depicted in **Figure 1**, with Arlington gaining population from Montgomery County, MD and the District of Columbia, while losing population to Fairfax, Loudoun, Prince William, and

Prince George's, MD, and the City of Alexandria. This pattern holds true for Arlington's neighboring jurisdiction as shown in **Figure 2**.

Similar to Fairfax County, the District of Columbia, Montgomery County, MD, and Prince George's County, MD, Arlington's domestic out-migration is higher than domestic in-migration. However, the

domestic resident loss is recaptured by the foreign in-migration.

Figure 1: ARLINGTON'S REGIONAL NET MIGRATION FLOW

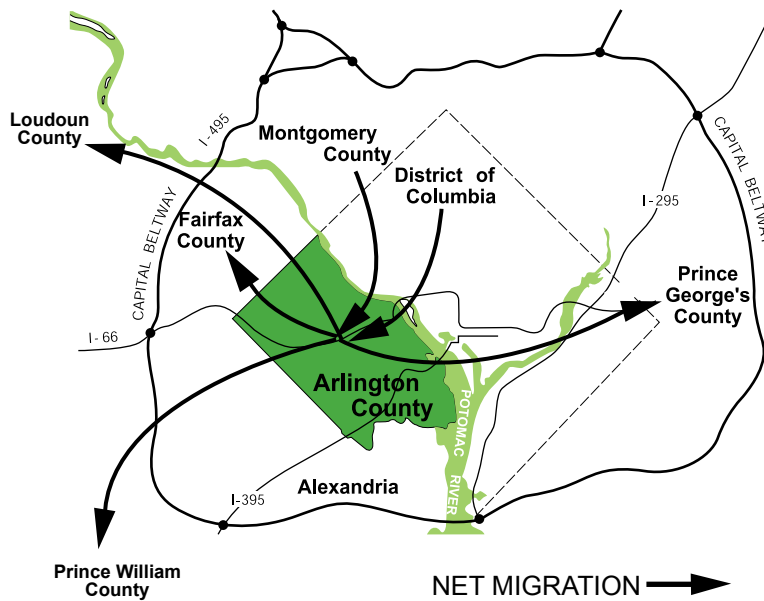


Figure 2: MIGRATIONS TO AND FROM NEIGHBORING JURISDICTIONS

TO Jurisdiction →	Arlington	City of Alexandria	Fairfax County	Loudoun County	Prince William County	Montgomery County	Prince George's County	District of Columbia
Arlington		2,195	7,086	361	1,068	1,031	544	2,357
City of Alexandria	1,437		4,873	229	1,223	569	1,149	809
Fairfax County	3,910	3,287		6,919	7,390	1,190	1,603	1,411
Loudoun County	239	128	3,955		814	153	103	90
Prince William County	590	423	5,431	991		276	547	429
Montgomery County	1,115	330	2,602	518	731		3,728	8,933
Prince George's County	397	515	1,451	251	632	8,623		5,951
District of Columbia	3,874	1,565	2,212	125	222	5,685	13,775	

Source: 2006-2010 American Community Survey (ACS) 5-year estimate

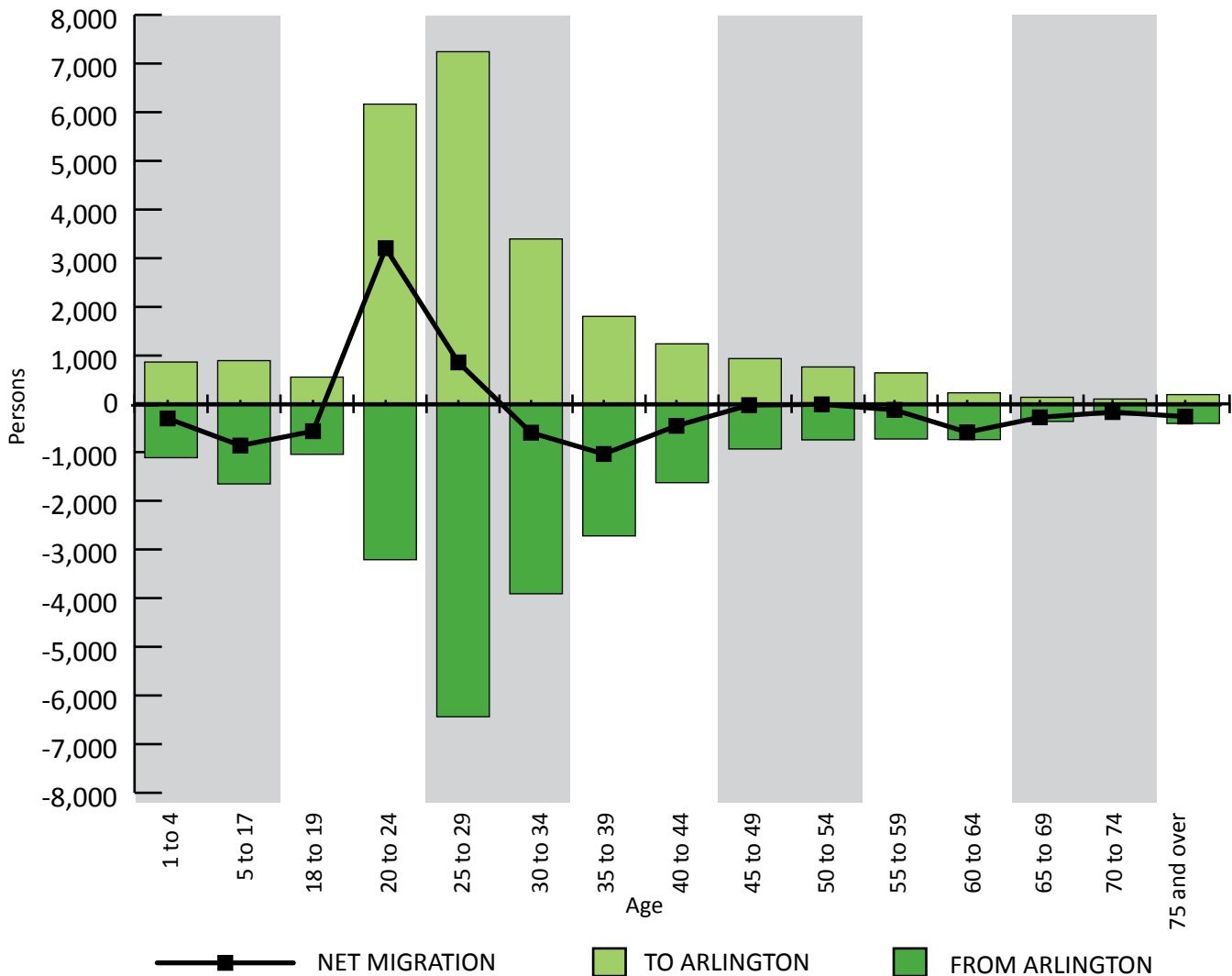
LIFE STAGE INFLUENCES MIGRATION

Over half (53.2 percent) of the in-migration to Arlington is between the ages of 20-29 years. Typically, young professionals are attracted to living in the Metro Corridors (Rosslyn-Ballston and Jefferson Davis).

As **Figure 3** shows below, there is a dramatic increase in the net migration between the ages of 20-24. Out-migration begins to increase with those age 24-29 years, however there is still a positive net migration for this age group.

On a regional scale, the migration trends oscillate between urban and suburban areas throughout a lifespan. The school age populations (1 to 19 years) tend to move to more suburban areas, and then back to more urban areas for the post college years of 20 to 29. Individuals in the 30-44 age group are shown to move back to more suburban areas, presumable to raise a family and enter into the suburban schools system. By age 45, migration starts back to more urban areas and migration trends start to stabilize around zero net migration.

Figure 3: NET DOMESTIC MIGRATION BY AGE



Source: 2006-2010 American Community Survey (ACS) 5-year estimate

DEPARTMENT OF COMMUNITY PLANNING, HOUSING AND DEVELOPMENT

Planning Division
 Planning Research and Analysis Team

www.arlingtonva.us/PRAT | (703) 228-3525

