

ARLINGTON VIRGINIA

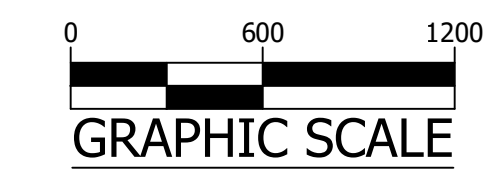
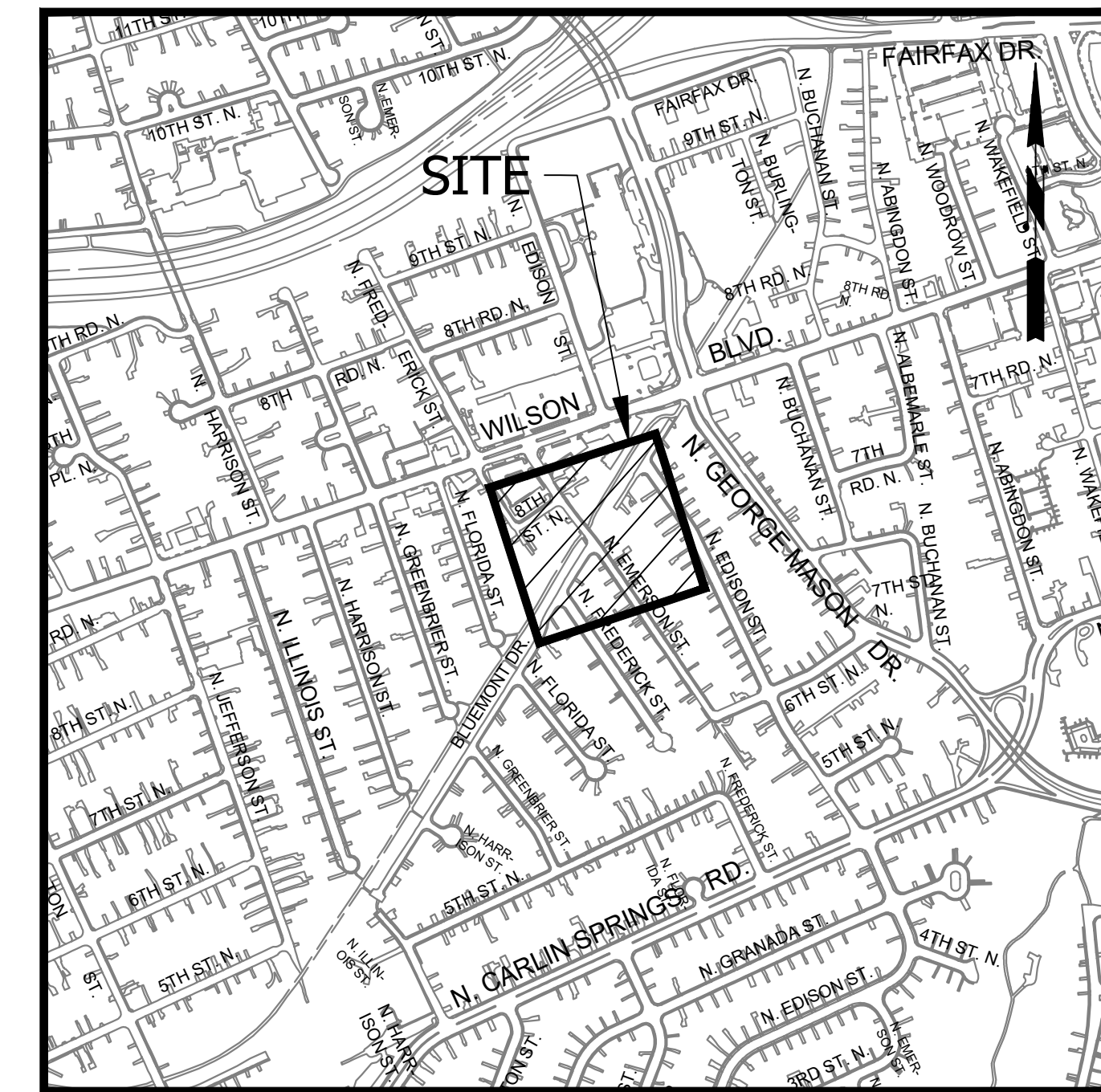
ENGINEER
DEPARTMENT OF ENVIRONMENTAL SERVICES

FACILITIES & ENGINEERING DIVISION
ENGINEERING BUREAU
2100 CLARENDON BOULEVARD, SUITE 813
ARLINGTON, VA 22201
PHONE: 703.228.3629 FAX: 703.228.3606
WWW.ARLINGTONVA.US

OWNER
DES/DTD/PLAN

CONTRACTOR
TO BE DETERMINED

LOCATION MAP



NOT FOR CONSTRUCTION

ARLINGTON VIRGINIA

DEPARTMENT OF ENVIRONMENTAL SERVICES
FACILITIES & ENGINEERING DIVISION
ENGINEERING BUREAU
2100 CLARENDON BOULEVARD, SUITE 813
ARLINGTON, VA 22201
PHONE: 703.228.3629
FAX: 703.228.3606

COPYRIGHT © 2018 ARLINGTON COUNTY VIRGINIA - ALL RIGHTS RESERVED

SEAL

90% SUBMISSION

APPROVALS DATE

APPROVALS ARE NOT REQUIRED WITH THIS SUBMISSION

REVISIONS DATE

CONSTRUCTION DRAWINGS FOR: BLUEMONT TRAIL AT N EMERSON ST (PHASE I) PROJECT NUMBER: B17K

GENERAL NOTES:

GENERAL CONSTRUCTION NOTES

- ALL CONSTRUCTION WORK FOR THIS PROJECT SHALL CONFORM TO THE ARLINGTON COUNTY DEPARTMENT OF ENVIRONMENTAL SERVICES, CONSTRUCTION STANDARDS AND SPECIFICATIONS, AND WHERE APPLICABLE THE VIRGINIA DEPARTMENT OF TRANSPORTATION (VDOT) ROAD AND BRIDGE SPECIFICATIONS, AND ROAD AND BRIDGE STANDARDS. THE LATEST EDITIONS OF EACH RELEVANT MANUAL SHALL BE USED.
- ALL CONSTRUCTION AND WORK ACTIVITIES SHALL COMPLY WITH THE VIRGINIA WORK AREA PROTECTION MANUAL AND ALL OTHER RELEVANT WORK SAFETY REQUIREMENTS, LATEST EDITIONS.
- THE CONTRACTOR SHALL IMMEDIATELY NOTIFY THE PROJECT OFFICER OF ANY DISCREPANCIES BETWEEN ACTUAL FIELD CONDITIONS AND THE APPROVED PLANS.
- THE CONTRACTOR SHALL CONTACT "MISS UTILITY" AT 811 FOR MARKING THE LOCATIONS OF EXISTING UNDERGROUND UTILITIES (i.e. WATER, SEWER, GAS, TELEPHONE, ELECTRIC, AND CABLE TV) AT LEAST 72 HOURS PRIOR TO ANY EXCAVATION OR CONSTRUCTION. THE CONTRACTOR IS REQUIRED TO IDENTIFY AND PROTECT ALL OTHER UTILITY LINES FOUND IN THE WORK SITE AREA BELONGING TO OTHER OWNERS THAT ARE NOT MEMBERS OF "MISS UTILITY". PRIVATE WATER, SEWER AND GAS LATERALS WILL NOT BE MARKED BY MISS UTILITY OR THE COUNTY. THE CONTRACTOR SHALL LOCATE AND PROTECT THESE SERVICES DURING CONSTRUCTION.
- THE CONTRACTOR SHALL BE RESPONSIBLE FOR LAYING OUT THE WORK AND SHALL RETAIN A PROFESSIONAL LAND SURVEYOR LICENSED IN THE COMMONWEALTH OF VIRGINIA TO PROVIDE ALL NECESSARY CONSTRUCTION LAYOUTS AND ESTABLISH ALL CONTROL LINES, GRADES, AND ELEVATION DURING CONSTRUCTION. THE CONTRACTOR SHALL SUBMIT A COPY OF ALL CUT SHEETS FOR REVIEW, PER THE SPECIFICATIONS. THE COST OF ALL NECESSARY SURVEYING SERVICES SHALL BE CONSIDERED INCIDENTAL TO THE WORK AND, UNLESS OTHERWISE SPECIFIED, THE COST SHALL BE INCORPORATED INTO THE COSTS FOR RELEVANT ITEMS.
- THE LOCATION OF ALL EXISTING UTILITIES SHOWN ON THESE PLANS ARE FROM BEST AVAILABLE RECORDS AND SHALL BE CONSIDERED TO BE APPROXIMATE. WHEN CONSTRUCTION ACTIVITY REACHES IN PROXIMITY TO EXISTING UTILITIES, THE TRENCH(ES) SHALL BE OPENED A SUFFICIENT DISTANCE AHEAD OF THE WORK OR TEST PITS SHALL BE MADE TO VERIFY THE EXACT LOCATION AND INVERTS OF THE UTILITY TO ALLOW FOR POSSIBLE CHANGES IN THE LINE OR GRADE AS DIRECTED BY OFFICER. THE CONTRACTOR SHALL BE RESPONSIBLE FOR ANY DAMAGE TO THE EXISTING UTILITIES AND THE RELATED STRUCTURES. ALL EXISTING UTILITY SYSTEMS SHALL BE PROTECTED TO PREVENT DAMAGE DURING THE CONTRACTOR'S OPERATIONS. ANY SYSTEM DAMAGED SHALL BE PROMPTLY REPAIRED AT NO COST TO THE OWNER.
- EXISTING MANHOLE FRAMES, COVERS, VALVE BOXES, AND OTHER APPURTENANCES SHALL BE ADJUSTED TO THE FINAL GRADE OR REPLACED, AS NECESSARY. UNLESS OTHERWISE SPECIFIED, THE COST FOR THIS SHALL BE CONSIDERED INCIDENTAL TO THE WORK, AND SHALL BE INCORPORATED INTO THE COSTS FOR RELEVANT ITEMS.
- THE CONTRACTOR SHALL PROVIDE ADA COMPLIANT ACCESS THROUGH OR AROUND THE SITE AT ALL TIMES AND SHALL ENSURE THE SAFETY OF ALL THOSE PASSING THROUGH OR ADJACENT TO THE SITE.
- ALL SIDEWALK AND CURB AND GUTTER DEMOLITION SHALL BEGIN AND END AT THE CONSTRUCTION JOINT NEAREST TO THE DEPICTED DEMOLITION EXTENTS WITH A NEAT SAWCUT LINE TO FULL DEPTH OF PAVEMENT SECTION.

STORMWATER AND ENVIRONMENTAL PROTECTION

- THE CONTRACTOR SHALL CONFINE ALL ACTIVITIES AT THE SITE ASSOCIATED WITH CONSTRUCTION ACTIVITIES, TO INCLUDE STORAGE OF EQUIPMENT AND OR MATERIALS, ACCESS TO THE WORK, FORMWORK, ETC. TO WITHIN THE DESIGNATED LIMITS OF DISTURBANCE (LOD).

TREE PROTECTION

- TREES SHALL BE PROTECTED PER THE REQUIREMENTS OF ARLINGTON PARKS & RECREATION STANDARD.

TRAFFIC CONTROL

- CONTRACTOR SHALL NOTIFY THE PROJECT OFFICER AT LEAST 3 WORKING DAYS PRIOR TO DISTURBING ANY EXISTING, OR INSTALLING ANY NEW, TRAFFIC SIGNS, SIGNALS, OR OTHER TRAFFIC CONTROL DEVICES.
- THE CONTRACTOR SHALL PREMARK THE LAYOUT OF ANY PERMANENT TRAFFIC CONTROL STRIPING, INDICATING THE PROPOSED LOCATION AND TYPE OF MARKING TO BE INSTALLED. THE PREMARKING MAY CONSIST OF TYPE D TAPE, CHALK, OR LUMBER CRAYONS. THE CONTRACTOR SHALL ALLOW 3 WORKING DAYS FOR THE INSPECTION AND APPROVAL OF THE PREMARKINGS PRIOR TO PLACING THE PERMANENT MARKINGS.
- THE CONTRACTOR SHALL SUBMIT ANY REQUESTS FOR TEMPORARY "NO PARKING" RESTRICTIONS TO THE PROJECT OFFICER AT LEAST 5 BUSINESS DAYS PRIOR TO THE DESIRED ONSET OF RESTRICTIONS. PRIOR TO A REQUEST FOR THE REMOVAL OF ACCESS TO ANY ADA PARKING SPACE THE CONTRACTOR MUST HAVE MADE PROVISION FOR ALTERNATIVE ADA PARKING AS INDICATED ON THE APPROVED PLAN OR AS DIRECTED BY THE PROJECT OFFICER.
- WHEN THE APPROVED PLAN CALLS FOR THE REMOVAL OF ANY PARKING METER THE CONTRACTOR MUST MAKE A REQUEST TO THE PROJECT OFFICER AT LEAST ONE WEEK IN ADVANCE OF THE DESIRED REMOVAL. THE PROJECT OFFICER WILL THEN COORDINATE THE PARKING METER REMOVAL WITH TRAFFIC ENGINEERING AND OPERATIONS.
- THE CONTRACTOR SHALL PRESERVE ALL BUS STOPS, INCLUDING MAINTAINING ADEQUATE ACCESSIBILITY THROUGH AND ADJACENT TO THE CONSTRUCTION FOR BUSES AND THEIR PASSENGERS. THE CONTRACTOR SHALL NOT CLOSE, RELOCATE, OR OTHERWISE MODIFY A BUS STOP WITHOUT PRIOR REQUEST OF THE PROJECT OFFICER. ANY RELOCATION OR CLOSURE OF A BUS STOP SHALL REQUIRE AT LEAST FOUR WEEKS ADVANCE NOTICE FOR COORDINATION WITH THE COUNTY'S BUS STOP COORDINATOR - 703-228-3049.
- WHEN CONDITIONS WARRANT DUE TO TRAFFIC VOLUMES, PATTERNS, OR SPECIAL EVENTS, THE COUNTY MAY SUSPEND OR OTHERWISE DIRECT THE CONTRACTOR'S ACTIVITIES TO PROTECT THE PUBLIC AND OR THE COUNTY'S TRANSPORTATION NETWORK.

WATER DISTRIBUTION, STORM AND SANITARY SEWER SYSTEMS

- UNLESS OTHERWISE DIRECTED, CONTRACTORS ARE EXPRESSLY PROHIBITED FROM OPERATING ANY WATER VALVES OR APPURTENANCES. CONTRACTORS SHALL SUBMIT ALL REQUESTS FOR VALVE OPERATIONS TO THE PROJECT OFFICER AT LEAST 1 WEEK IN ADVANCE OF THE REQUIRED OPERATION.
- IN THE EVENT OF A WATER OR SEWER EMERGENCY, THE CONTRACTOR SHALL IMMEDIATELY NOTIFY THE COUNTY'S WATER CONTROL CENTER AT 703-228-6555 AND THE PROJECT OFFICER.
- THE CONTRACTOR SHALL COORDINATE ALL UTILITY SHUTOFFS, DISCONNECTS, AND/OR ABANDONMENT WITH UTILITY OWNER AND PROJECT OFFICER AT LEAST 1 WEEK IN ADVANCE OF THE REQUIRED INTERRUPTION.

FIRE DEPARTMENT NOTES:

- ALL EXISTING FIRE HYDRANTS AND FIRE DEPARTMENT CONNECTIONS SHALL BE MAINTAINED UNOBSTRUCTED AND ACCESSIBLE AT ALL TIMES IN ACCORDANCE WITH SECTIONS 508.5.4 AND 508.5.5 OF THE ARLINGTON COUNTY FIRE PREVENTION CODE.
- ACCESS TO BUILDINGS FOR FIREFIGHTING SHALL BE MAINTAINED AT ALL TIMES. EXISTING FIRE APPARATUS ACCESS ROADS (FIRE LANES) SHALL BE KEPT CLEAR OF OBSTRUCTIONS IN ACCORDANCE WITH SECTION 503.4 OF THE ARLINGTON COUNTY FIRE PREVENTION CODE. ACCESS TO CONSTRUCTION SITES SHALL BE PROVIDED AND MAINTAINED IN ACCORDANCE WITH SECTION 1410 OF THE ARLINGTON COUNTY FIRE PREVENTION CODE.
- IN THE EVENT THAT EXISTING FIRE DEPARTMENT CONNECTIONS OR FIRE APPARATUS ACCESS ROADS (FIRE LANES) MUST BE OBSTRUCTED TO FACILITATE CONSTRUCTION ACTIVITIES, CONTACT THE ARLINGTON COUNTY FIRE DEPARTMENT FIRE PREVENTION OFFICE AT 703-228-4644 TO COORDINATE REVIEW AND APPROVAL OF TEMPORARY FIRE DEPARTMENT CONNECTIONS AND/OR FIRE APPARATUS ACCESS ROADS PRIOR TO CREATING THE OBSTRUCTION.

Sheet List Table

Sheet Number	Sheet Title
C000.1	COVER
C004.1	TYPICAL SECTIONS AND DETAILS
C006.1	LEGEND
C011.1	EXISTING CONDITIONS
C021.1	DEMOLITION PLAN
C031.1	EROSION AND SEDIMENT CONTROL PLAN PHASE I AND PHASE II
C032.1	EROSION AND SEDIMENT CONTROL NOTES
C032.2	EROSION AND SEDIMENT CONTROL DETAILS
C041.1	PLAN AND PROFILE
C042.1	RAMP DETAILS
C044.1	CROSS SECTIONS
C045.1	GEOMETRIC CONTROL PLAN
C071.1	EXISTING STORM SEWER DRAINAGE DIVIDES
C072.1	STORM SEWER COMPUTATIONS AND DETAILS
C091.1	LANDSCAPE PLAN
C092.1	LANDSCAPE DETAILS
C101.1	SIGNAGE AND MARKING PLAN
C121.1	MAINTENANCE OF TRAFFIC PLAN
C121.2	DETOUR PLAN
C121.3	MAINTENANCE OF TRAFFIC NOTES AND DETAILS I
C121.4	MAINTENANCE OF TRAFFIC NOTES AND DETAILS II
C201.1	SIGHT DISTANCE EXHIBIT

SWM#

SWM# N/A

ADT

NO DATA AVAILABLE

STREET CLASSIFICATION

N EMERSON ST - NEIGHBORHOOD MINOR

POSTED SPEED

N EMERSON ST - 25 MPH

BLUEMONT TRAIL
AT N EMERSON ST (PHASE I)

COVER

DESIGNED: E CACCAVARI
DRAWN: E CACCAVARI
CHECKED: J LIN
MISS UTILITY TRANSMITTAL #: 5424

PLOTTED: JULY 15 2021

SCALE:

AS NOTED

SHEET

C000.1

REVISED ON 05/23/2018

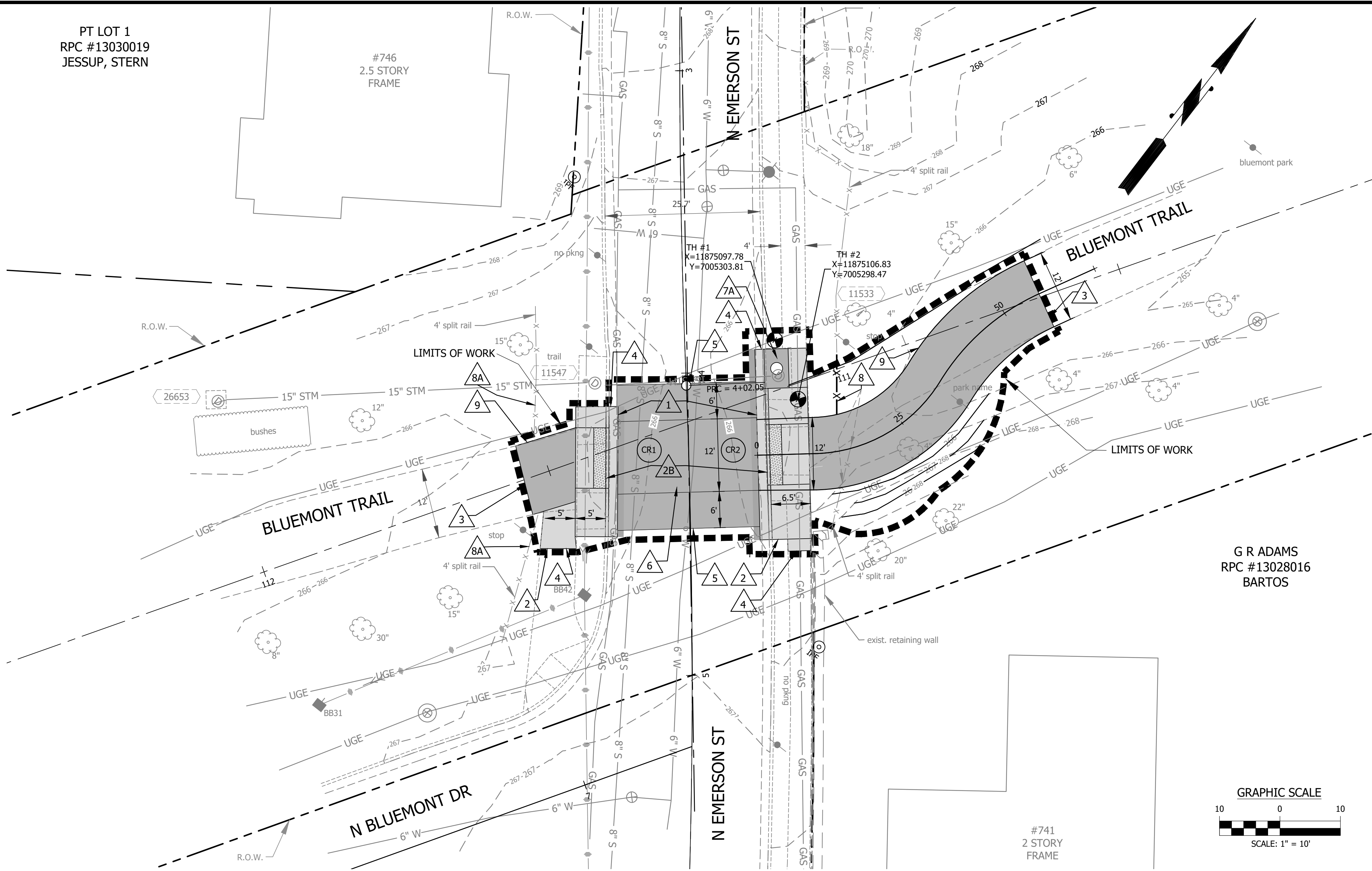
FILENAME: B17K-230-PLAN_PROFILE.E DWG PATH: C:\DATA\B17K\DESIGN\CADD\ACTIVE\N EMERSON ST PLOTTED BY: ECACCAVARI

PT LOT 1
RPC #13030019
JESSUP, STERN

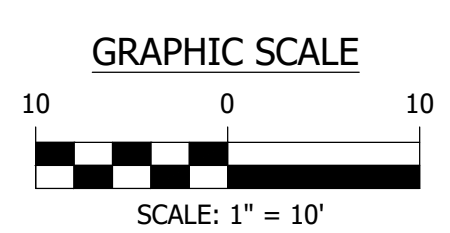
#746
2.5 STORY
FRAME

N EMERSON ST

#741
2 STORY
FRAME



G R ADAMS
RPC #13028016
BARTOS

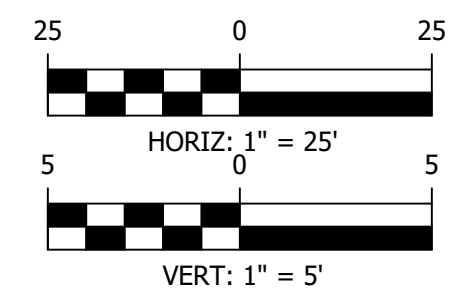
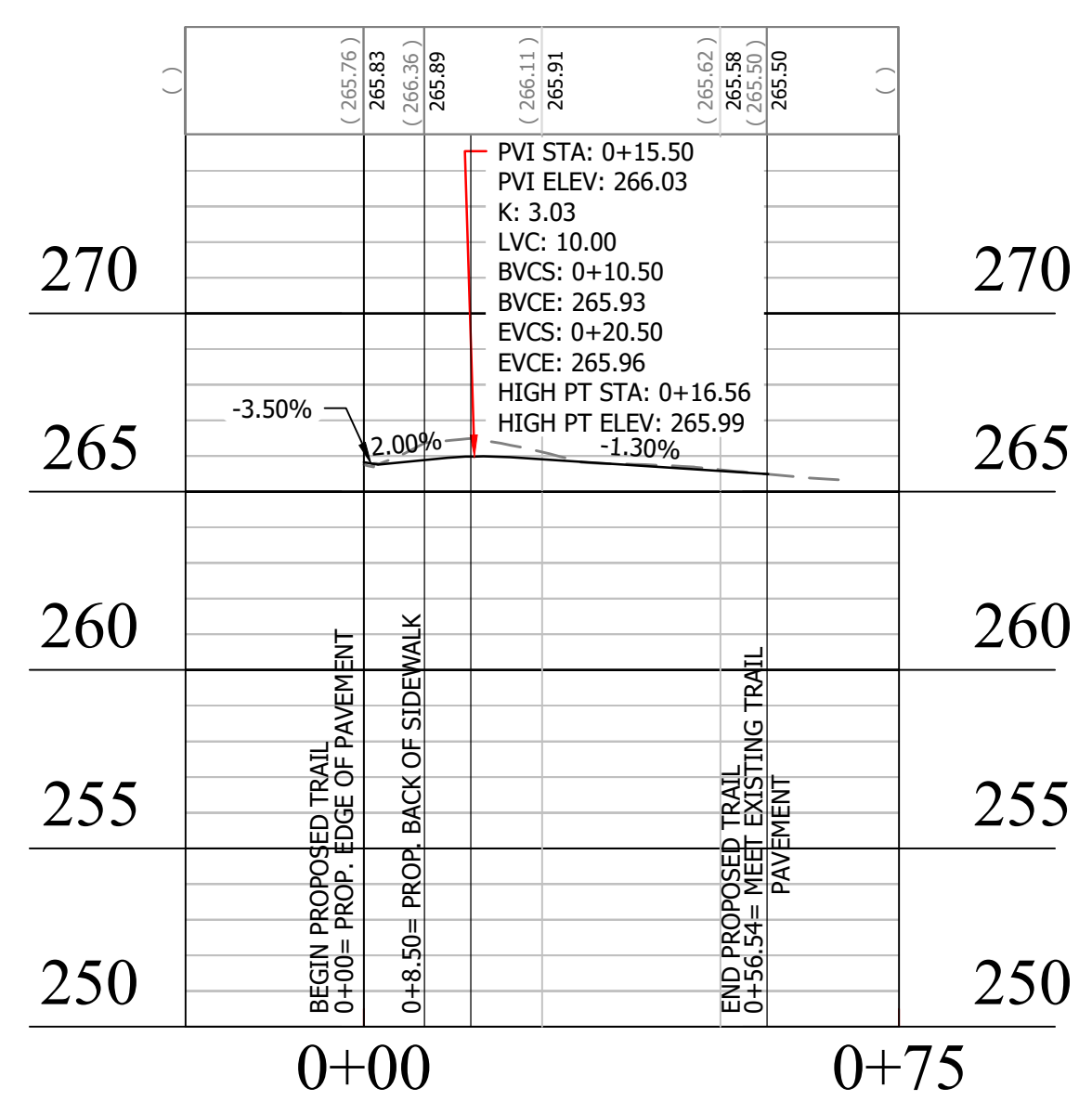


CONSTRUCTION NOTES

- 1 PROP CURB AND GUTTER (C-2) ARL STD (R-2.0)
- 2 PROP SIDEWALK ARL STD (R-2.0)
- 2B PROP RAMP (CG-12B) VDOT ROAD & BRIDGE STANDARDS (204.03) SEE CURB RAMP DETAIL ON SHEET #C042.1
- 3 MATCH EXISTING TRAIL SURFACE
- 4 MATCH EXISTING SIDEWALK AND/OR CURB & GUTTER
- 5 MATCH EXISTING ROADWAY SURFACE
- 6 PROPOSED RAISED CROSSWALK. SEE SHEET C004.1 FOR DETAILS
- 7A REPLACE EXISTING CATCH BASIN TOP AND PARTIALLY REPAIR STRUCTURE WALL SEE SHEET # C072.1 FOR DETAILS
- 8 EXISTING SECTION OF SPLIT RAIL FENCE TO BE REMOVED AND RESET IN NEW LOCATION
- 8A EXISTING SECTION OF SPLIT RAIL FENCE TO BE REMOVED, STORED, AND RESET
- 9 PROP ASPHALT TRAIL. SEE TYPICAL SECTION 1 ON SHEET # C004.1

LEGEND

CR# CURB RAMP NUMBER



ARLINGTON
VIRGINIA

DEPARTMENT OF
ENVIRONMENTAL SERVICES
FACILITIES & ENGINEERING DIVISION
ENGINEERING BUREAU
2100 CLARENDON BOULEVARD, SUITE 813
ARLINGTON, VA 22201
PHONE: 703.228.3629
FAX: 703.228.3606

COPYRIGHT © 2018 ARLINGTON COUNTY
VIRGINIA - ALL RIGHTS RESERVED

SEAL
90%
SUBMISSION

APPROVALS DATE

APPROVALS ARE NOT REQUIRED
WITH THIS SUBMISSION

REVISIONS DATE

REVISIONS	DATE

BLUEMONT TRAIL
AT N EMERSON ST (PHASE I)
PLAN AND PROFILE

DESIGNED: E CACCAVARI
DRAWN: E CACCAVARI
CHECKED: J LIN
MISS UTILITY TRANSMITTAL #: 5424
PLOTTED: JULY 15 2021

SCALE:
AS SHOWN

SHEET C041.1