



Lacey Woods Park Renovation Project

Engagement #1 Summary : October 5, 2023 - October 26, 2023



**ARLINGTON
VIRGINIA**

Parks & Recreation



Who Participated?

263 Participants

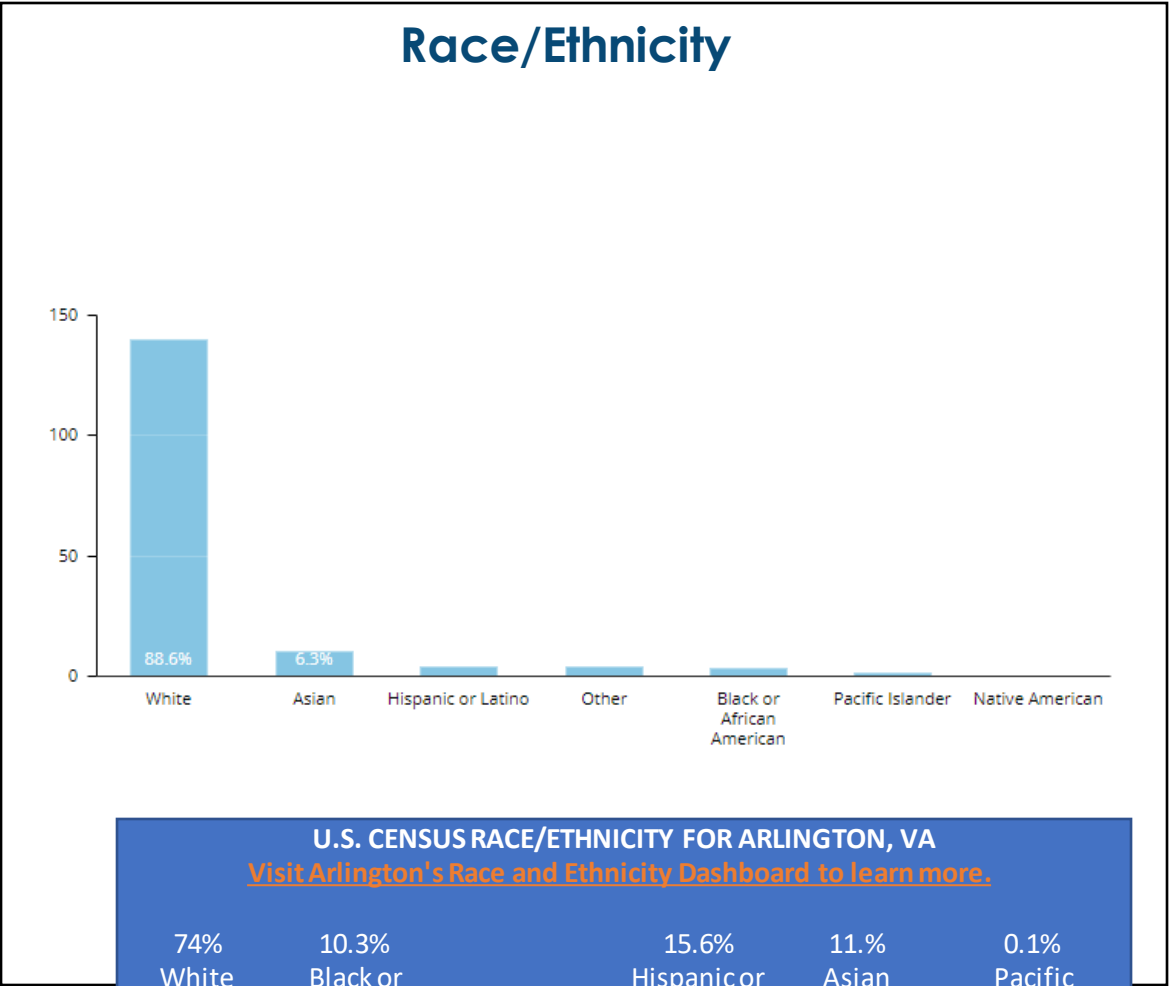
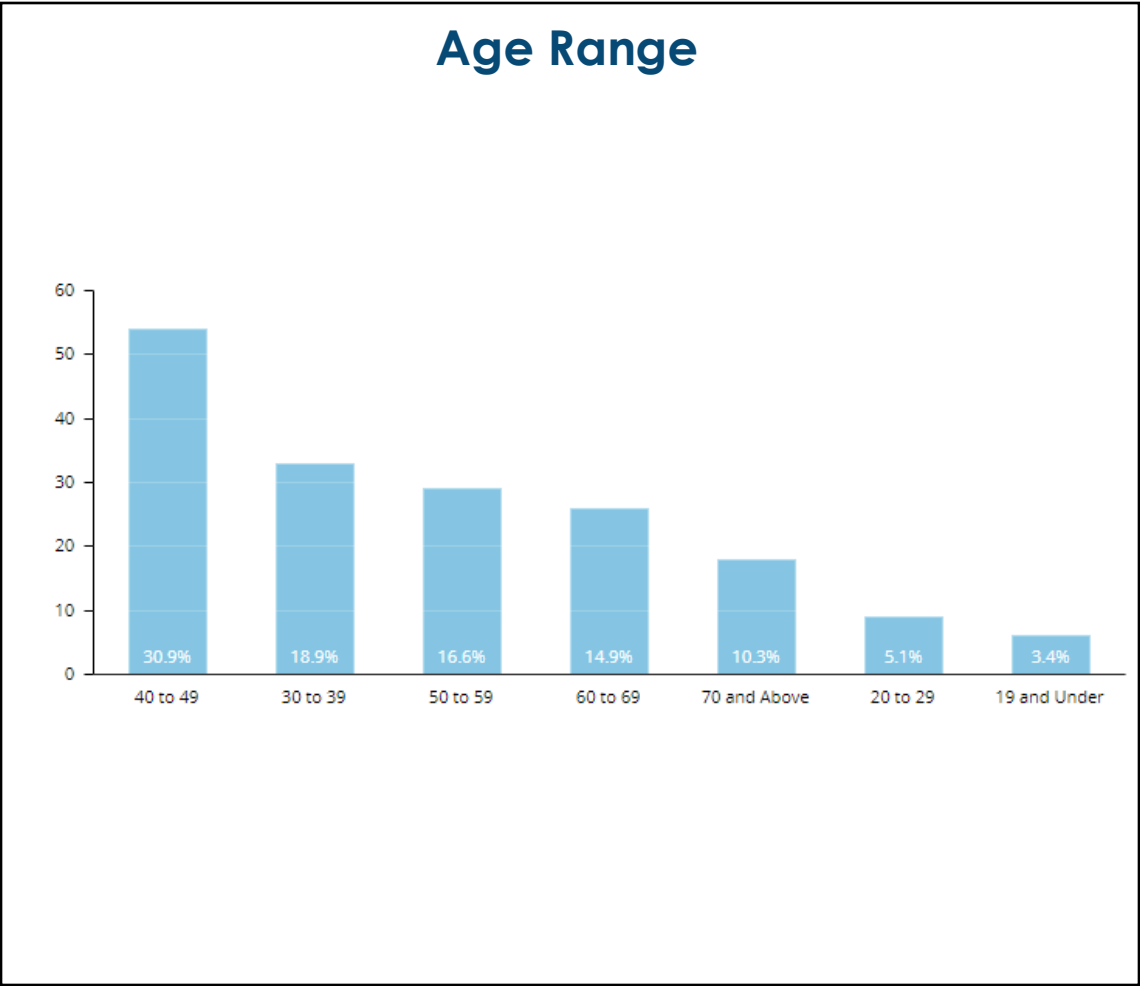


ONLINE FEEDBACK FORM

**263 Online
Feedback Form Responses**

*Through these responses, we received 157
comments*

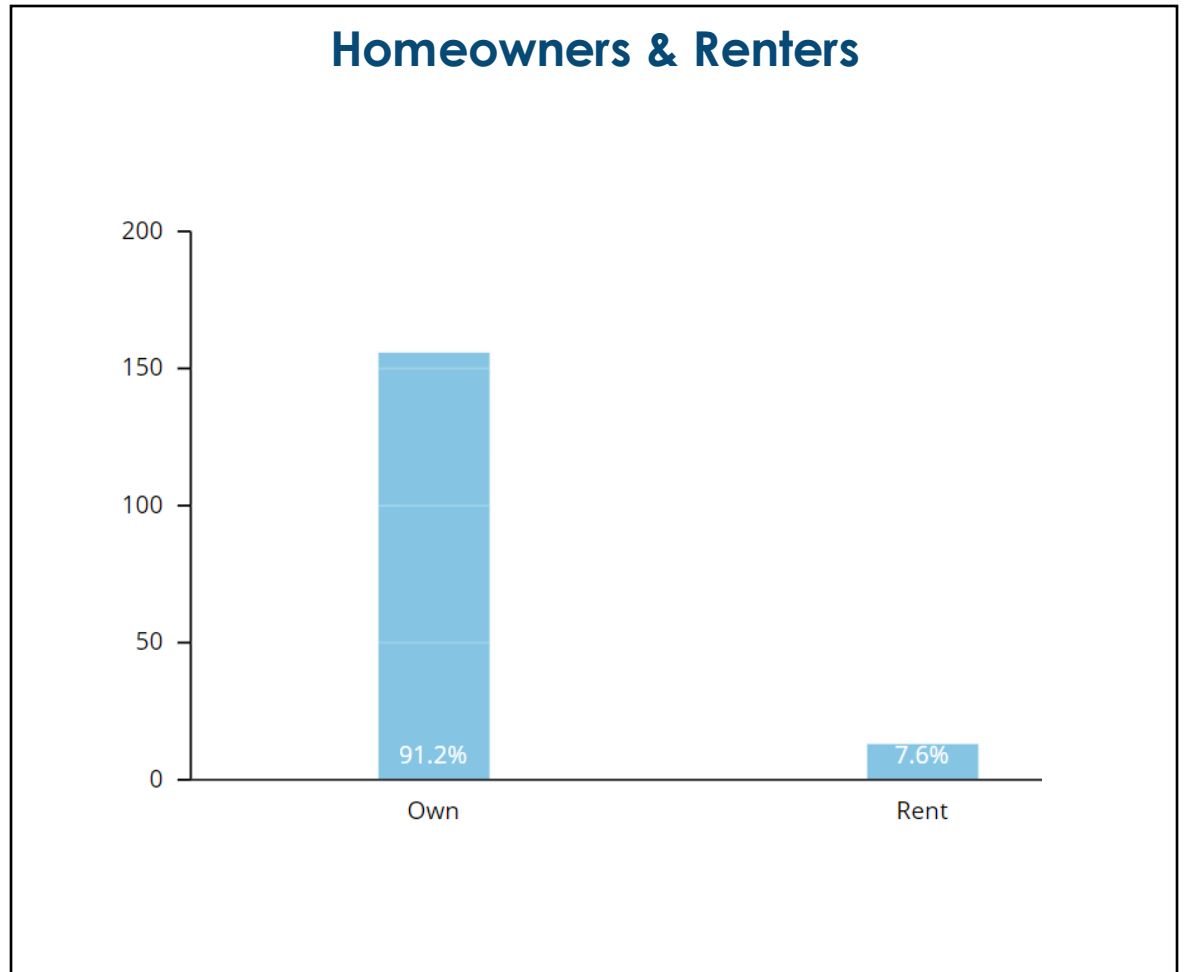
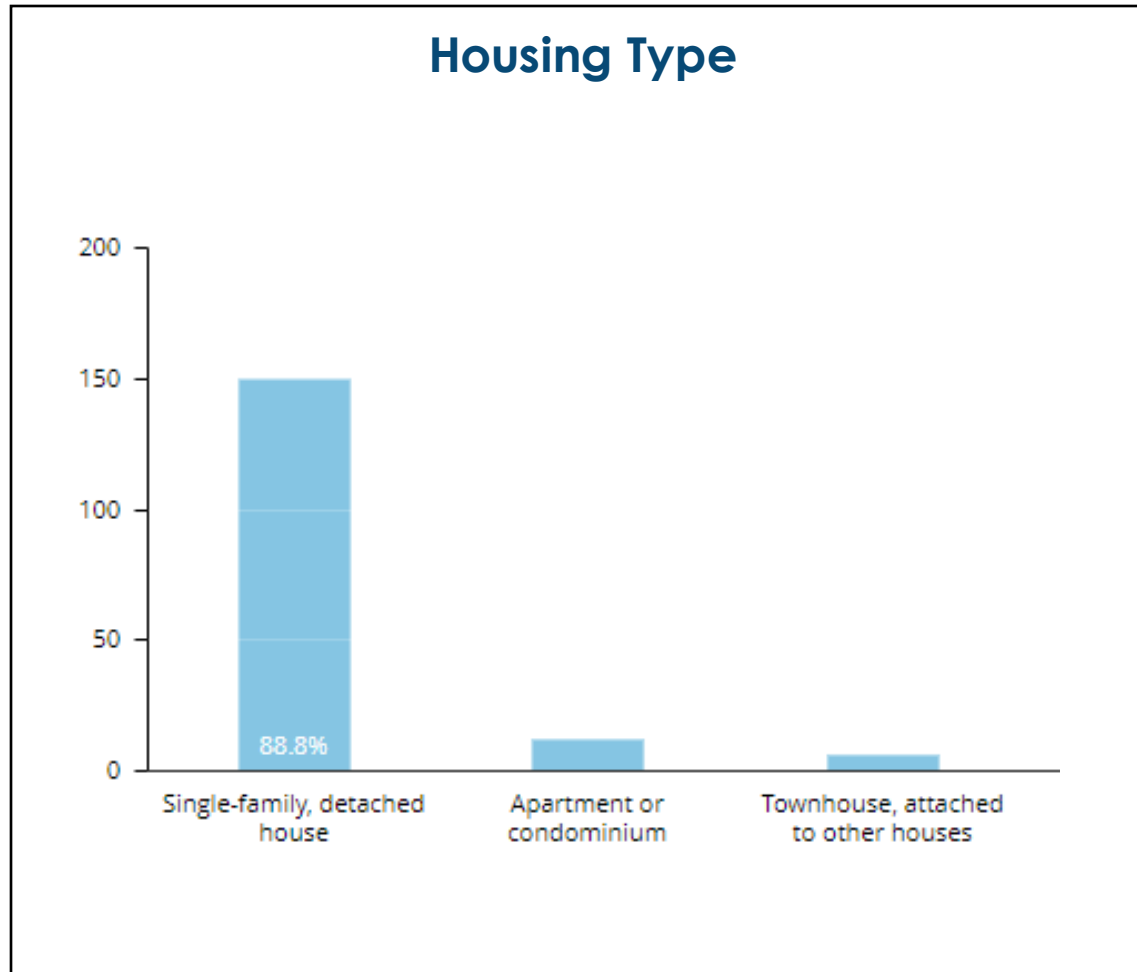
Who Participated: Online



U.S. CENSUS RACE/ETHNICITY FOR ARLINGTON, VA
[Visit Arlington's Race and Ethnicity Dashboard to learn more.](#)

74% White	10.3% Black or African American	15.6% Hispanic or Latino	11.% Asian	0.1% Pacific Islander
--------------	--	--------------------------------	---------------	-----------------------------

Who Participated: Online



Who Participated: Online

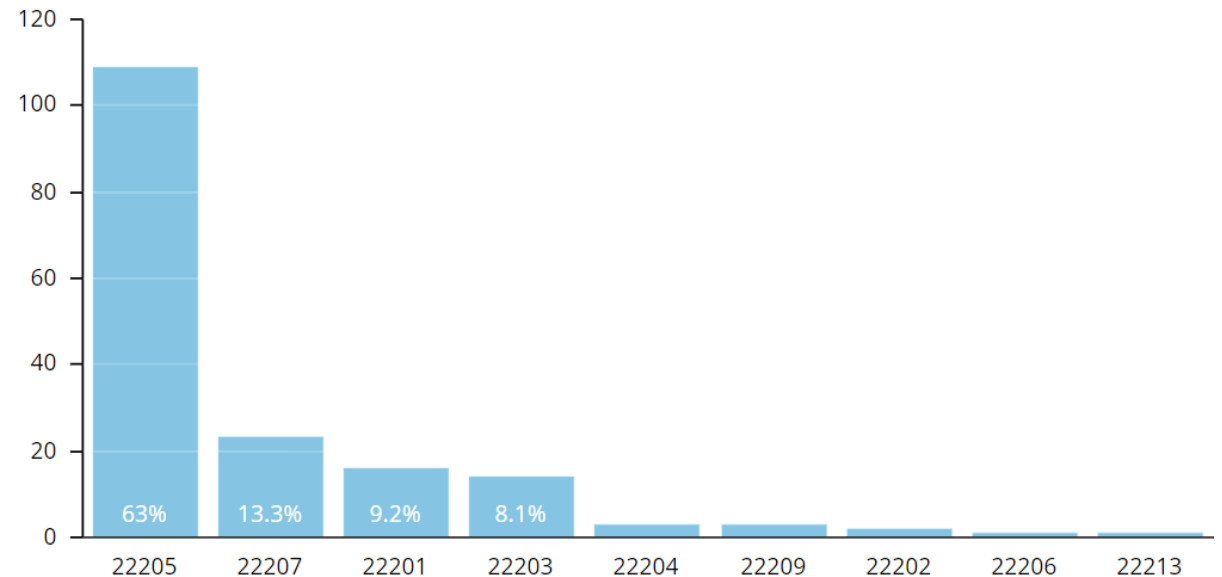
Neighborhoods

In total, the project team heard from respondents located in **31 out of 62** Arlington civic associations.

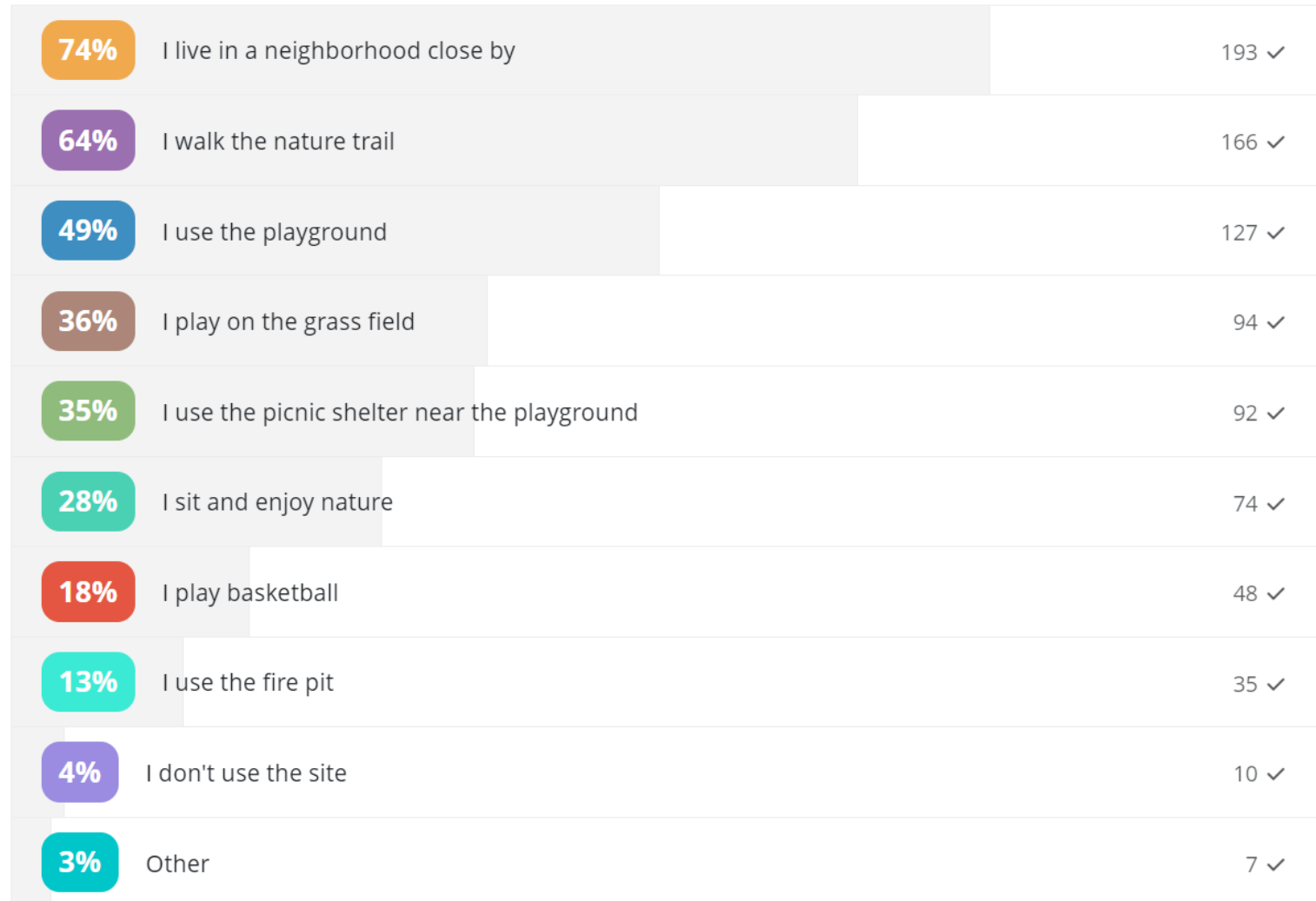
Top Neighborhood Responses

- **Bluemont (31%)**
- **Waycroft Woodlawn (13%)**
- **Tara Leeway Heights (8%)**
- **Westover Village (5%)**
- **Arlington East Falls Church (5%)**
- **Ballston / Virginia Square (5%)**

Zip Code

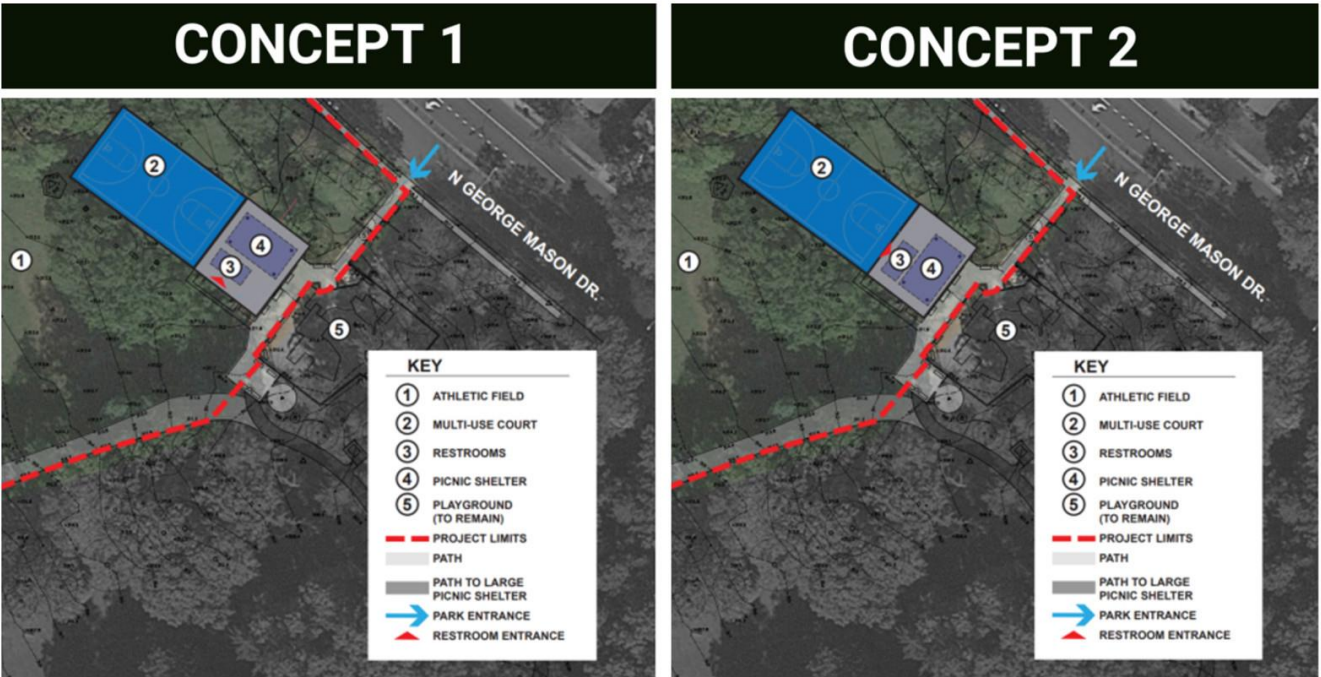


Who Participated?



On a scale of 1 to 5, how would you rate the layouts of Concept 1 and Concept 2? (1 being "I do not like it at all" and 5 being "I love it!")

	1	2	3	4	5	Unsure
Layout of Concept 1	12% 1	9% 2	21% 3	31% 4	23% 5	4% Unsure
Layout of Concept 2	17% 1	19% 2	26% 3	16% 4	18% 5	3% Unsure



CONCEPT 2

KEY

1

ATHLETIC FIELD

2

MULTI-USE COURT

3

RESTROOMS

4

PICNIC SHELTER

5

PLAYGROUND (TO REMAIN)

—

PROJECT LIMITS

—

PATH

—

PATH TO LARGE PICNIC SHELTER

→

PARK ENTRANCE

▲

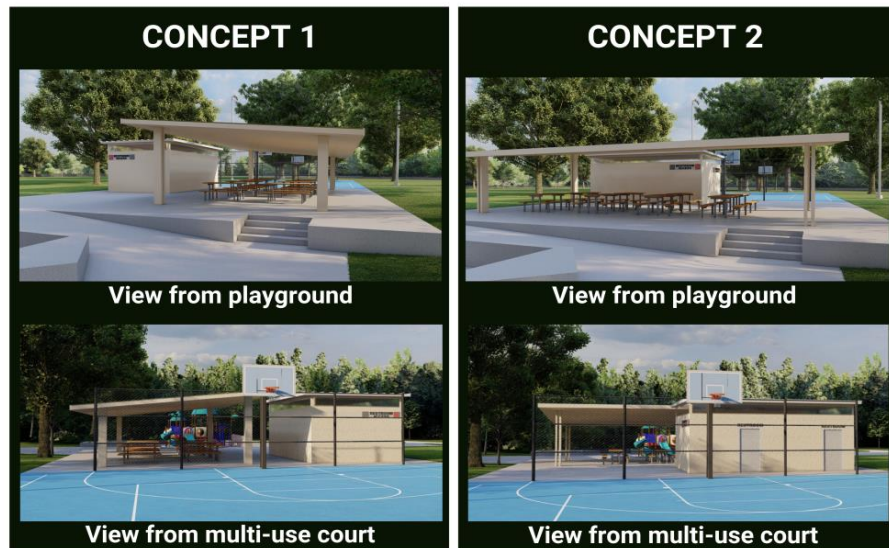
RESTROOM ENTRANCE

If you selected anywhere from 0 to 2 or "unsure" for either of the concepts, please share which concept and why:

Open-ended comments were grouped by tagging each of the comments with the topic themes mentioned

Theme	Bathroom Placement	Picnic Shelter Orientation	Visibility from Playground	Park Amenities and Landscaping
Mentions	32	13	11	5
Summary	Respondents expressed concerns about restroom placement, with a preference for proximity to the playground to ensure quick access and visibility from the playground for child safety.	Respondents have varying opinions about the orientation of the picnic shelter, with some favoring it facing the playground for convenience and others questioning its positioning near a busy road.	Respondents emphasize the importance of maintaining clear lines of sight from the playground to restroom entrances to ensure child supervision and safety.	Suggestions include adding landscaping, native plants, educational signs, and walking trails to enhance the park's character and beauty, with volunteers offering to lead community efforts for beautification.

Here, you'll find side-by-side graphic models of Concept 1 and Concept 2 from different directions. Please use the chart below to identify which concept you believe addresses the following considerations best:



	Concept 1	Concept 2	No Opinion	Unsure
Line of sight between park amenities (e.g., picnic shelter, playground, restrooms, multi-use court, athletic field)	65% Concept 1	23% Concept 2	9% No Opinion	3% Unsure
Circulation between park amenities (e.g., picnic shelter, playground, restrooms, multi-use court, athletic field)	59% Concept 1	23% Concept 2	12% No Opinion	5% Unsure
Access to the restrooms	62% Concept 1	18% Concept 2	17% No Opinion	3% Unsure
Orientation of the restrooms and picnic shelter	58% Concept 1	26% Concept 2	11% No Opinion	6% Unsure

Did we miss anything? Please use the space below to share any additional thoughts that were not captured in your answers above.

Open-ended comments were grouped by tagging each of the comments with the topic themes mentioned

Theme	Bathroom Placement	Park Amenities and Landscaping	Visibility from Playground	Picnic Shelter Orientation
Mentions	21	10	9	7
Summary	Respondents are concerned about the placement of restrooms within Lacey Woods Park. They emphasized the importance of restroom accessibility and visibility from both the field and the playground to ensure child safety. Some suggest having restroom access from both sides of the building, and there are requests for a family restroom as well. Others express a preference for the current restroom orientation, which faces George Mason Drive.	Several respondents focus on park amenities and landscaping. They suggest replacing grass lawns with meadows to support pollinators and reduce stormwater runoff. Additionally, there are requests for more sidewalks and walkable paths to connect different areas of the park. Concerns about tree removal and the potential environmental impact are also raised, with some suggesting the use of recycled existing materials to reduce project costs.	Respondents highlight the need for clear lines of sight from the playground to restroom entrances. They argue that this visibility is essential for child safety, especially for caregivers supervising multiple children. There is a preference for restroom entrances facing the playground and concerns about the current placement of restroom doors.	Some respondents discuss the orientation of the picnic shelter within the park. While there are differing opinions, some express concerns about the shelter's proximity to George Mason Drive, citing potential traffic noise and disruption. Others mention that the orientation of the picnic shelter should prioritize its visibility from the playground for families' convenience. The shelter's location in relation to the restroom is also a point of consideration.