

Concord Mews Pond Update

November 7, 2022

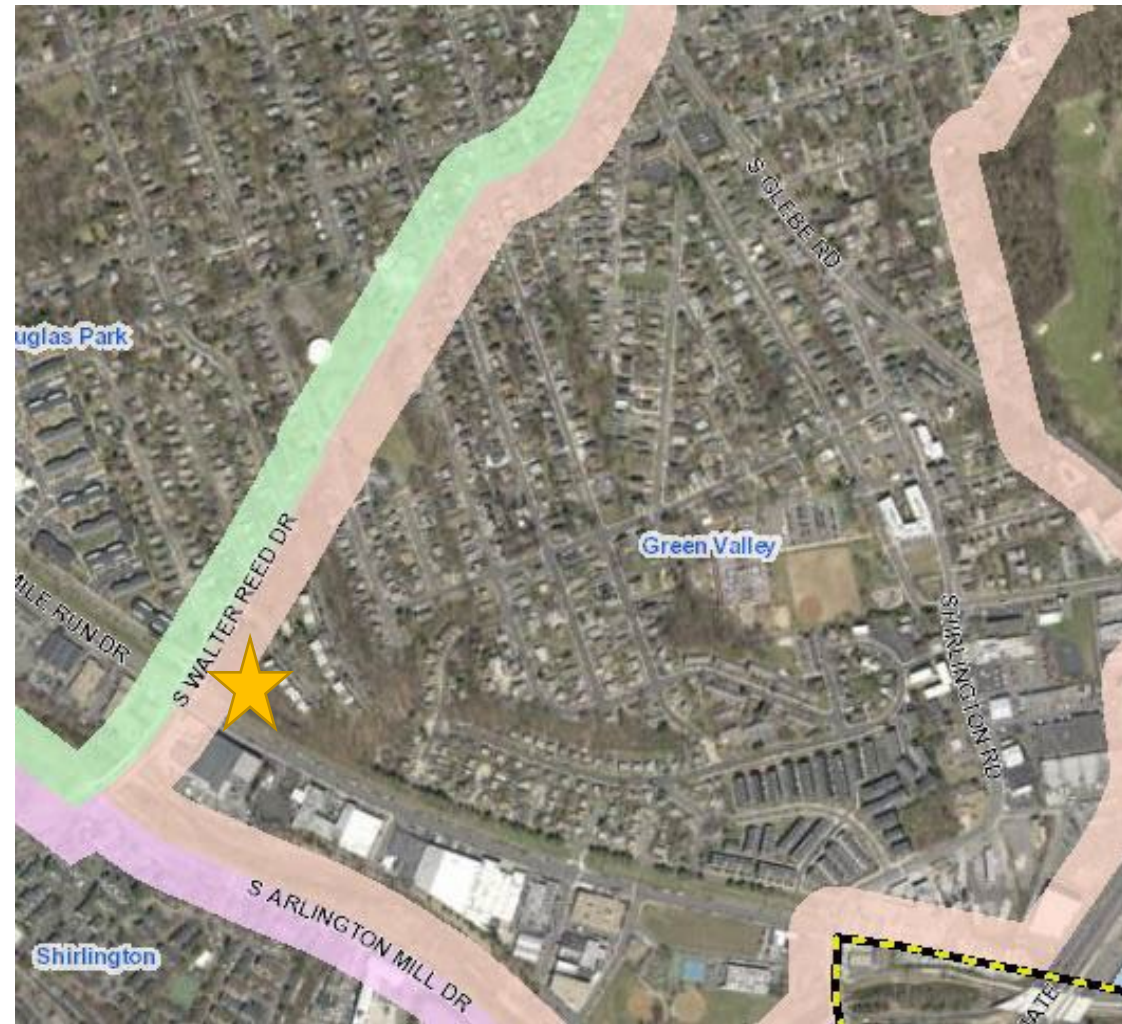
Arlington County – Dept of Environmental Services
Office of Sustainability and Environmental Management

Anne Guillette – Project Manager

Lily Whitesell – Outreach and Engagement



Location - Map



The map on the right also shows the property ownership. There is a County easement for the portion of the pond that is on Concord Mews' property.

Pond Background

Installed 1970s-80s to manage stormwater for Concord Mews Condominiums

Originally designed to temporarily store and slowly release stormwater runoff



Pond Condition

The pond today provides valuable habitat, desirable shade and screening. However, there are also issues that need to be addressed:

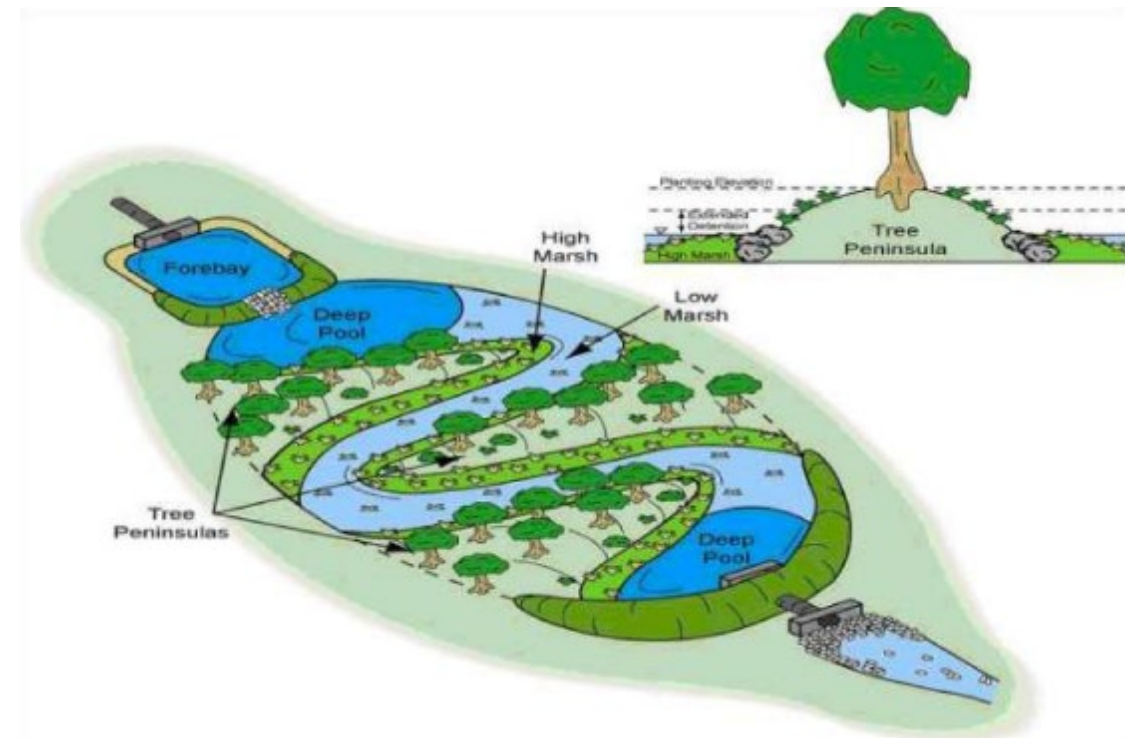
- Inflow pipe not functioning
- Sediment accumulated in pond
- Outflow pipe needs repair work



Project Approach

The project approach will aim to:

- Restore the pond functionality (inflow, outflow, ponding area) so it captures and absorbs runoff and protects water quality in Four Mile Run
- Ensure long-term stability and safety of the pond and berm
- Provide natural screening and healthy forested habitat



What Will the Restored Pond Look Like?

- Mature trees preserved and providing shade, especially upslope of the pond
- There will be some tree impacts to restore the pond function and ensure berm safety
- Replanting – Native trees, shrubs, herbaceous wetland and upland plants providing habitat for songbirds and other native wildlife

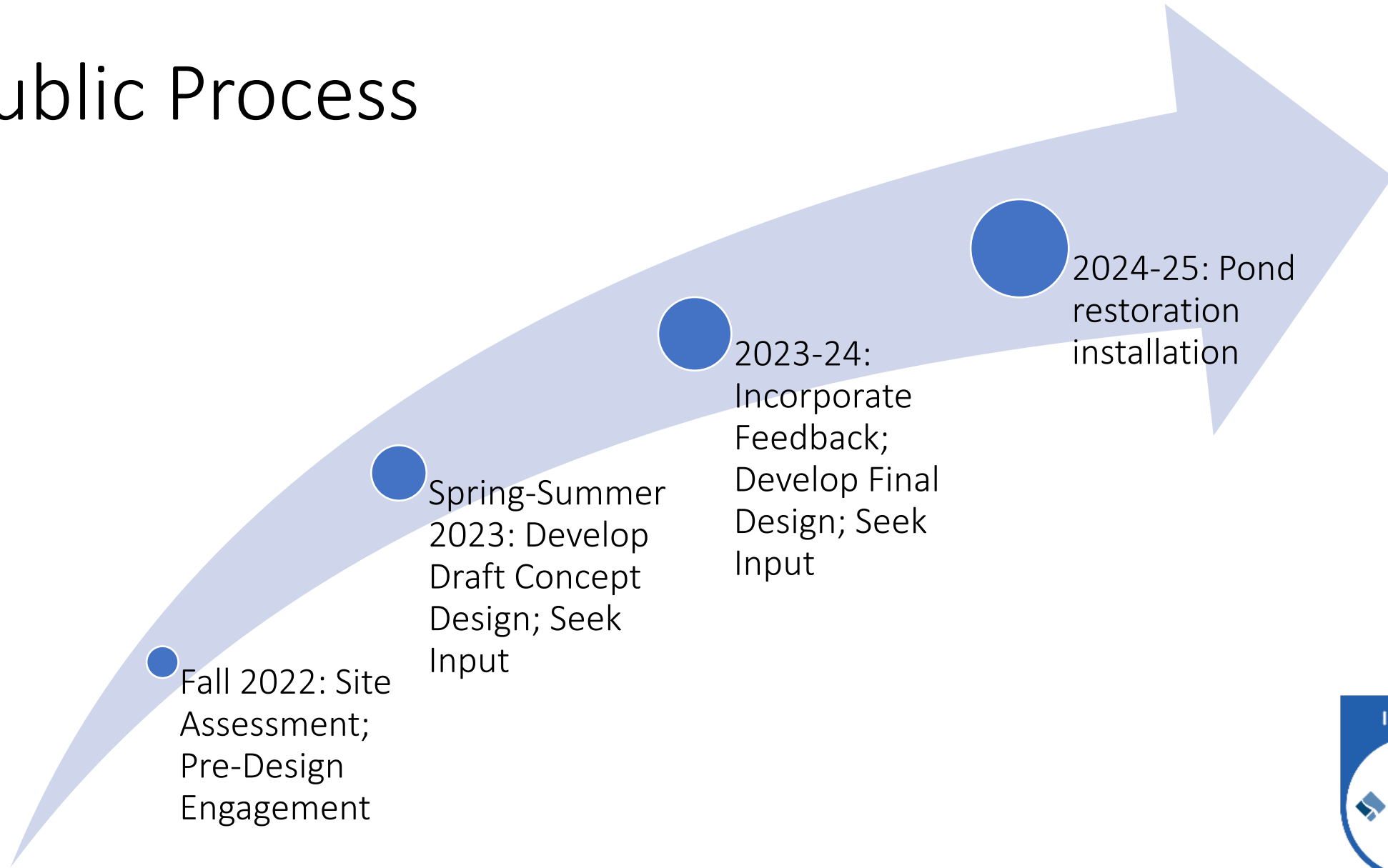


Fall 2022 Updates

- In July 2022, Arlington County Board provided funding for the design phase of the project in the Capital Improvement Plan
- We have begun the site assessment phase
- You may see site assessors and surveyors on the Concord Mews property starting at the end of September to the end of December



Public Process



Fall 2022: Site Assessment; Pre-Design Engagement

Spring-Summer 2023: Develop Draft Concept Design; Seek Input

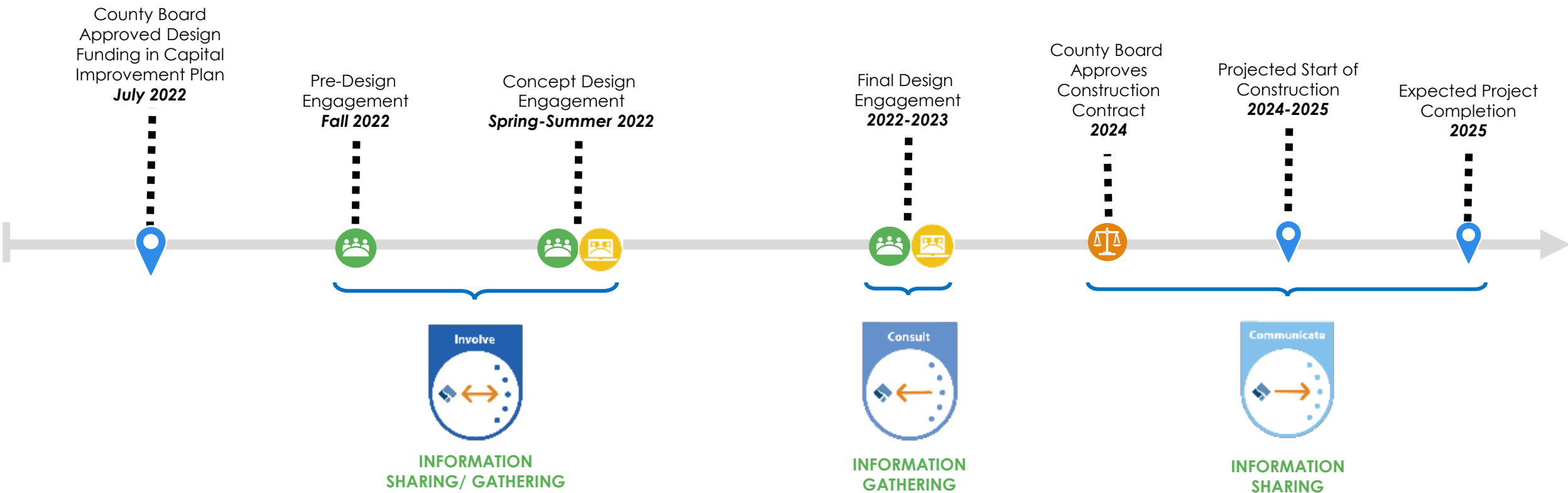
2023-24: Incorporate Feedback; Develop Final Design; Seek Input


2024-25: Pond restoration installation





Concord Mews Pond Restoration

Origin: Stormwater Plan & Retrofits
Funding: Capital Improvement Program – Stormwater Fund
Staff Contact: Lily Whitesell & Anne Guillette
LWhitesell@arlingtonva.us, aguillette@arlingtonva.us



 **Online Feedback**
 (e.g. questionnaire, feedback form, etc.)

 **In-Person Engagement and Pop-Ups**
 (e.g. community meeting, roundtable, tabling, walking/bus tour, deliberative dialogue, etc.)

 **Virtual Meeting**
 (e.g., TEAMS, TEAMS live, Zoom, etc.)

 **County Board Engagement**
 (e.g. public hearing, Board work session, open door Monday, commission meeting etc.)

 **Key Milestone**

Community Feedback and Questions

What do community members want to see in this area?

- Preserve screening & privacy
- Keep it natural
- Limit tree impacts
- What else?

Concerns or questions?

Lily Whitesell

703-228-3042

lwhitesell@arlingtonva.us

Anne Guillette, Project Manager

703-228-3956

aguillette@arlingtonva.us