

***E. coli* Monitoring Locations for the Four Mile Run Drainages**

This document provides directions and photos to assist Arlington's volunteers in finding the bacteria monitoring locations.

Site Location	Directions to Site	Sampling Site	Volunteer
<p>FMR 1. Benjamin Banneker park, near the border of Arlington and Falls Church</p> <p>1701 N. Van Buren St. 38.882611, -77.157771</p>	<p>From 66 E, take exit 69 for Washington Blvd. Go through the light to stay on Washington Blvd. Make a right onto Sycamore St, by the East Falls Church Metro station. Make a right onto 19th St, after the Metro station, and then a left onto Van Buren St.</p> <p>An alternative option is to park at the Banneker Dog Park, and walk in from the opposite direction. Dog park address: 6620 N. 18th St, Arlington, VA.</p>	<p>From Van Buren St., walk down the bike trail. The stream will be on your left. Take the sample before the pedestrian bridge.</p> <p>From the dog park, walk on the trail around the athletic field and towards Van Buren Street. Sycamore Street will be behind you. The stream will be on your right. Pass the foot bridge that crosses Four Mile Run.</p> <p>From 18th St N, pass the playground, cross the foot bridge, and turn right.</p> <p>Collect your sample in the riffle in the meander bend just upstream of Wren Branch.</p>	



Park entrance at Van Buren St.



Park entrance at 18th St N.



Footbridge approach from N Sycamore St. Walk toward the circled area.



Angle 1: facing upstream, with back to the footbridge. Sample at the red arrow.



Angle 2: facing downstream, upstream of the footbridge.
Sample at the red arrow.



Angle 3: facing upstream. Sample at the red arrow.



FMR1 (top) and Wren Branch (bottom) sampling points.

ted March 2025

Wren Branch

Updated March 2025

Site Location	Directions to Site	Sampling Site	Team
<p>Wren Branch/Extra #1</p> <p>“Extra” Sites are temporary and were set up to track source of high loads at FMR 2.</p> <p>Extra #2 and #3 were discontinued in September 2016.</p> <p>38.882458, -77.157591</p>	<p>Benjamin Banneker Park, near Arlington-Falls Church border, 1701 N. Van Buren St.</p> <p>From 66 E, take exit 69 for Washington Blvd. Go through the light to stay on Washington Blvd. Make a right onto Sycamore St, by the East Falls Church Metro station. Make a right onto 19th St, after the Metro station, and then a left onto Van Buren St.</p> <p>An alternative option is to park at the Banneker Dog Park, and walk in from the opposite direction. Dog park address: 6620 N. 18th St, Arlington, VA.</p>	<p>Sample the small tributary just downstream from FMR 1, Wren Branch. The sample will be taken from the other side of the trail, before the stream enters the culvert.</p>	

Wren Branch Photos

Updated March 2025



Sample at the red arrow, just before Wren Branch travels under the trail.

FMR 2

Updated March 2025

Site Location	Directions to Site	Sampling Site	Team
FMR 2. East Falls Church Park North Roosevelt St. 38.883938, -77.154818	<p>From 66 E, take exit 69 for Washington Blvd. Go through the light to stay on Washington Blvd. Go west on Sycamore St. Make a left onto 17th Street, then an immediate left on N. Roosevelt St. Park in the cul-de-sac on N. Roosevelt St.</p> <p>Note: Sycamore becomes Roosevelt Blvd. This is different from Roosevelt St., where you park. You will be sampling Four Mile Run right before it goes under 66.</p>	<p>Walk towards the bike trail, crossing the basketball court.</p> <p>We collect the sample from the upstream side of the pedestrian bridge, near the cul-de-sac, using a Becklinator.</p>	Jackie Rivas

FMR 2 Photos

Updated March 2025



Parking area.



Pedestrian bridge.



Sample at the red arrow, just upstream of the bridge.



FMR 3

Updated March 2025

Site Location	Directions to Site	Sampling Site	Team
<p>FMR 3. Bluemont Park (at the confluence of a small tributary and 4MR)</p> <p>Intersection of Wilson Blvd and N. Manchester St. 38.878417, -77.136089</p>	<p>From Wilson Blvd going west, make a right onto Arlington Mill Drive. You will pass the rose gardens at Bluemont park, and you will also see a sign for Bluemont park on your left, but you want to go in the park on the other side of Wilson.</p> <p>You will park on Arlington Mill Drive, at the end of the street.</p>	<p>Cross the bike trail and walk into the field in front of you. Follow the stream. Walk to the destroyed pedestrian bridge that crosses the stream, where a small tributary enters Four Mile Run. Sample below the confluence of the two streams.</p>	<p>Carey Johnston</p>

FMR 3 Photos

Updated March 2025



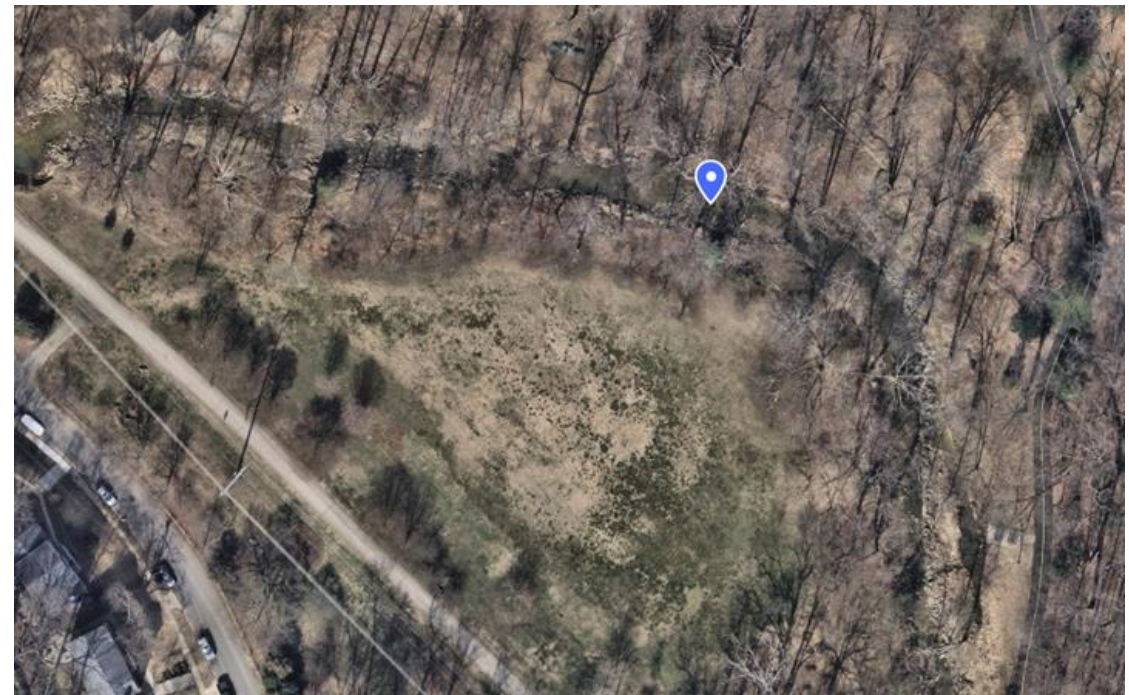
Cross the W&OD trail and follow the tree line.



Walk past the destroyed pedestrian bridge.



Sample at the red arrow, just downstream of the confluence of Four Mile Run and the tributary.



FMR 4

Updated March 2025

Site Location	Directions to Site	Sampling Site	Team
<p>FMR 4. Glencarlyn Park (confluence of small tributary and 4MR)</p> <p>Near intersection of N. Carlin Springs Rd and N. Kensington St.</p> <p>38.867790, -77.127600</p>	<p>From Rt. 50, take the exit for Carlin Springs Rd North. Once on Carlin Springs Rd, you will cross a bridge over Four Mile Run. Make a U-turn at the first break in the median, near N. Kensington St. You will see a small parking area for the park on the right after you make the U-turn.</p>	<p>Walk down the hill along the paved trail from the parking lot. Go to the right once you get to the bottom of the hill. Sample in the stream, just downstream from the Carlin Springs Rd. bridge. (see picture)</p>	<p>Kayla Hinrichs</p>



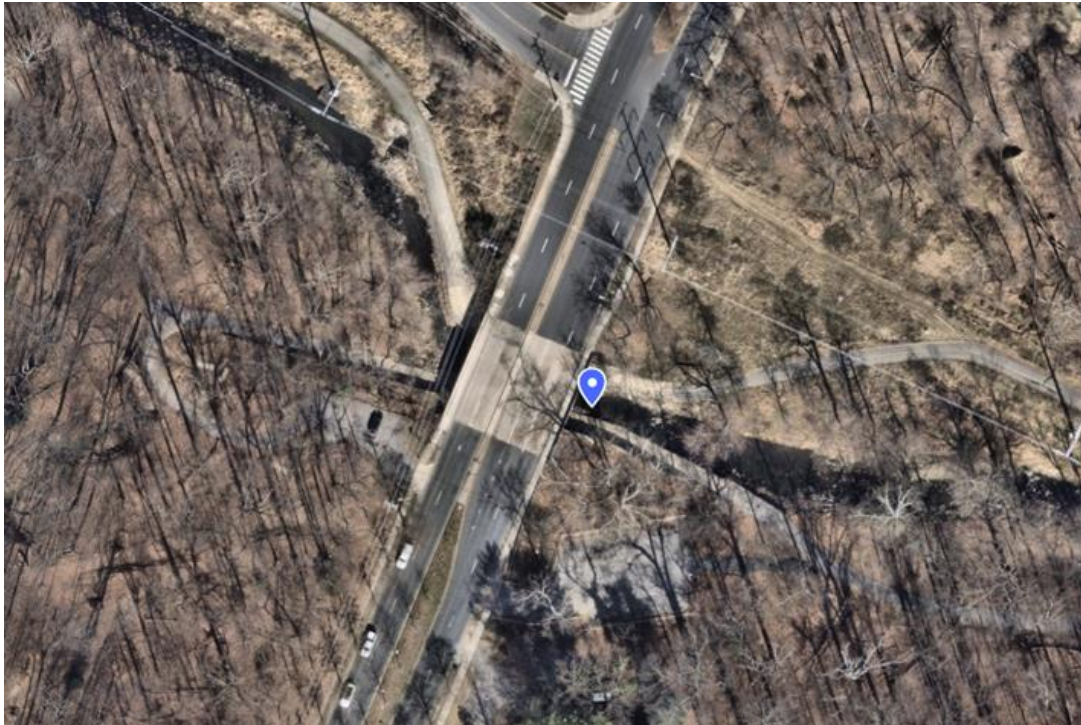
Facing Carlin Springs from the West parking lot.



Facing Carlin Springs from the East parking lot.



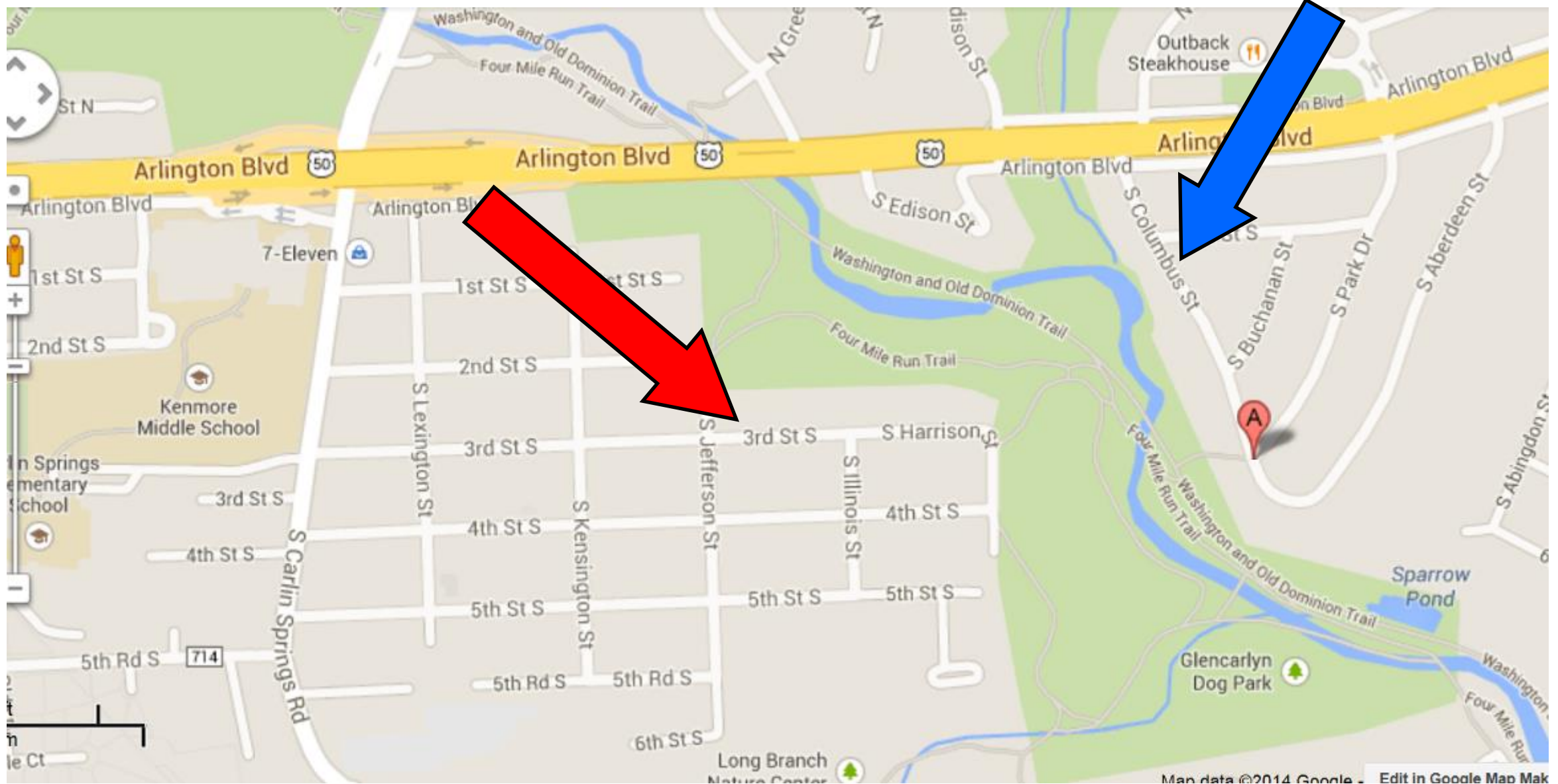
Sample just downstream of the bridge, at the red arrow.



FMR 5

Updated March 2025

Site Location	Directions to Site	Sampling Site	Team
<p>FMR 5. Glencarlyn Park (below the confluence of 4MR and Lubber Run)</p> <p>38.863988, -77.118730</p>	<p>From Rt. 50, turn onto S. Columbus St (between George Mason and Carlin Springs Rd exits). Follow S. Columbus to the intersection with Aberdeen St. There will be a small park entrance on your right.</p> <p>Or</p> <p>From Carlin Springs Rd, turn onto 3rd Street South. Follow 3rd Street until it T-intersects with South Harrison Street. At this intersection notice the Glencarlyn Park sign and a paved road into the park. The roads ends in the parking lot next to the sampling site.</p>	<p>Follow the paved trail down into the park. Take your water sample upstream of the concrete pedestrian bridge.</p>	<p>Steve Schaible</p>



You can access FMR 5 two ways. By South Columbus Street (indicated by the blue arrow), or by 3rd Street South (indicated by the red arrow).

FMR 5 Photos

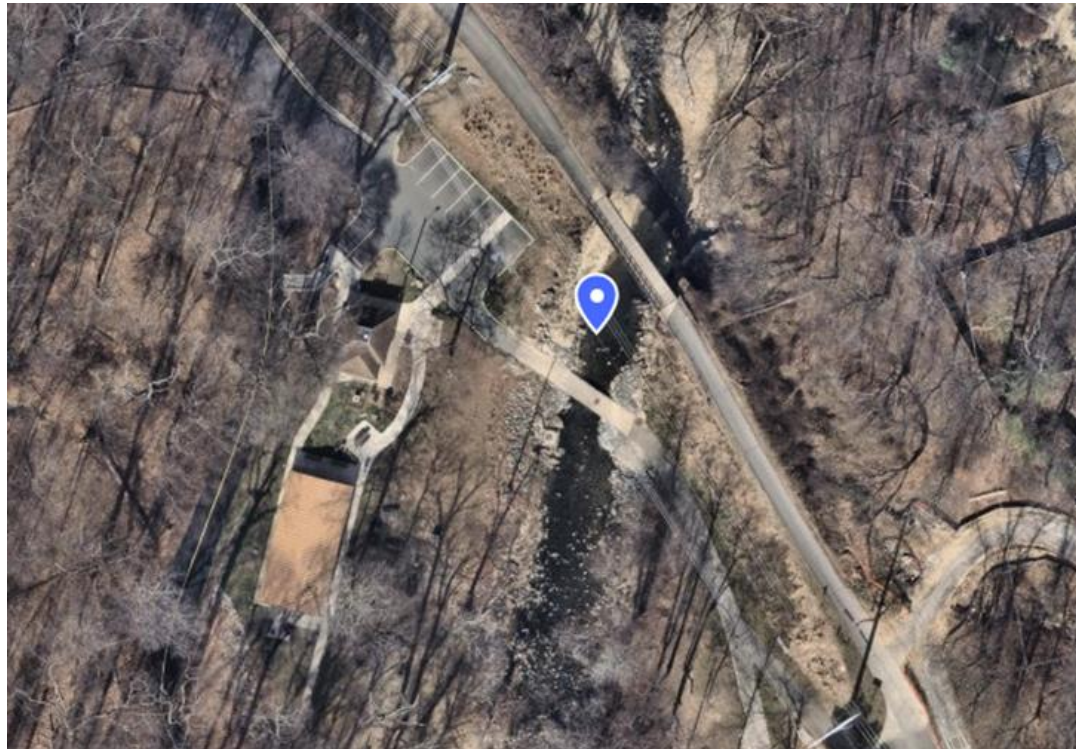
Updated March 2025



View of the bridge from the W&OD trail.



Sample just upstream of the concrete bridge.



FMR 6 & ULB 1

Updated March 2025

Site Location	Directions to Site	Sampling Site	Team
<p>FMR 6 & ULB 1. Glencarlyn Park (above and below the dog park, and the confluence of Upper Long Branch with 4MR)</p> <p>FMR 6: 38.862005, -77.116687</p> <p>ULB 1: 38.862000, -77.118265</p>	<p>From Rt. 50, take Carlin Springs Rd south. Make a left onto 4th St. Follow it to the end, and make a right onto Harrison St, which will dead end. You will see a narrow paved road on your left going down the hill into the park, drive down this road. At the bottom of the hill, go left and drive past the picnic shelter. Park in the parking lot that is across from the Glencarlyn dog park. You may notice emergency call post #94.</p> <p>These sites are adjacent to the Glencarlyn dog park.</p>	<p>Take a sample in the stream upstream of the dog park, across from the picnic shelter. This is Upper Long Branch stream (ULB1).</p> <p>Then walk through the dog park, and take a sample in Four Mile Run (FMR 6), below the confluence of Four Mile Run and Upper Long Branch.</p>	<p>Sue Bartow & Mark Breyer</p>



The park entrance is to the right of this sign.



Follow road to parking lot.



Park here. There is also another parking lot further down the road, by the dog park.



Sample in the riffles across from the pavilion, around the downstream end of the sand bar, near the red arrow.

FMR 6 Photos

Updated March 2025



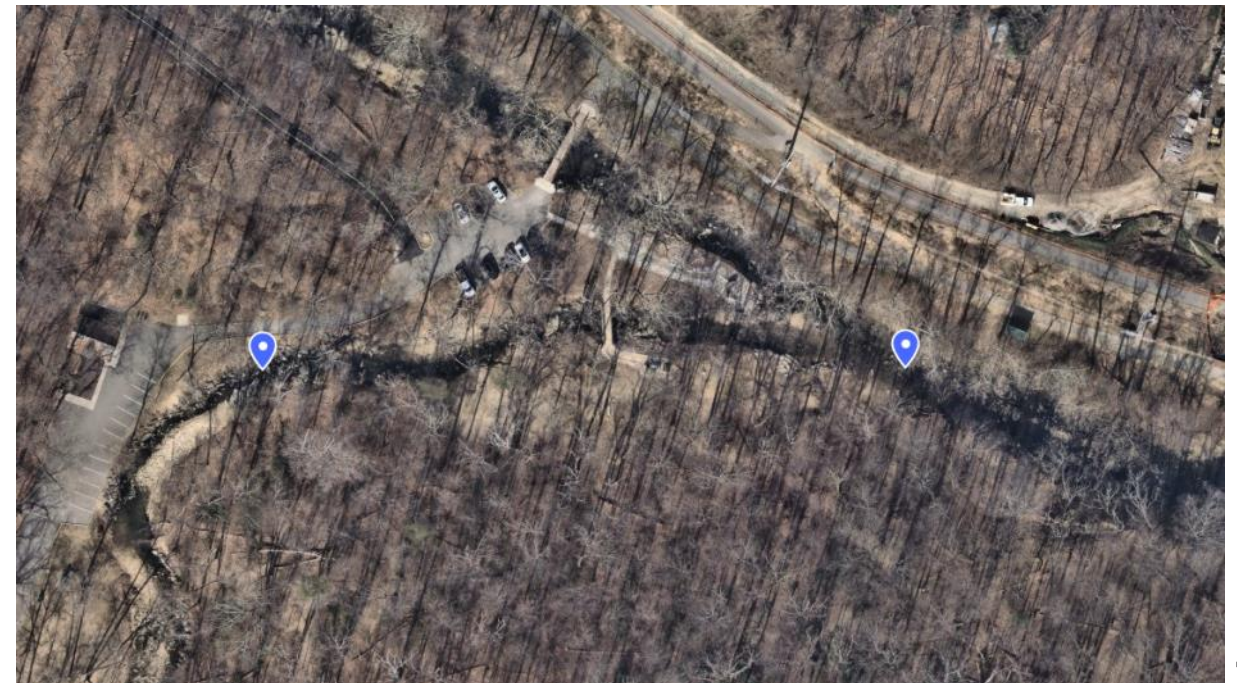
Cross the pedestrian bridge into the dog park.



Walk down to Four Mile Run. Pass the picnic table.



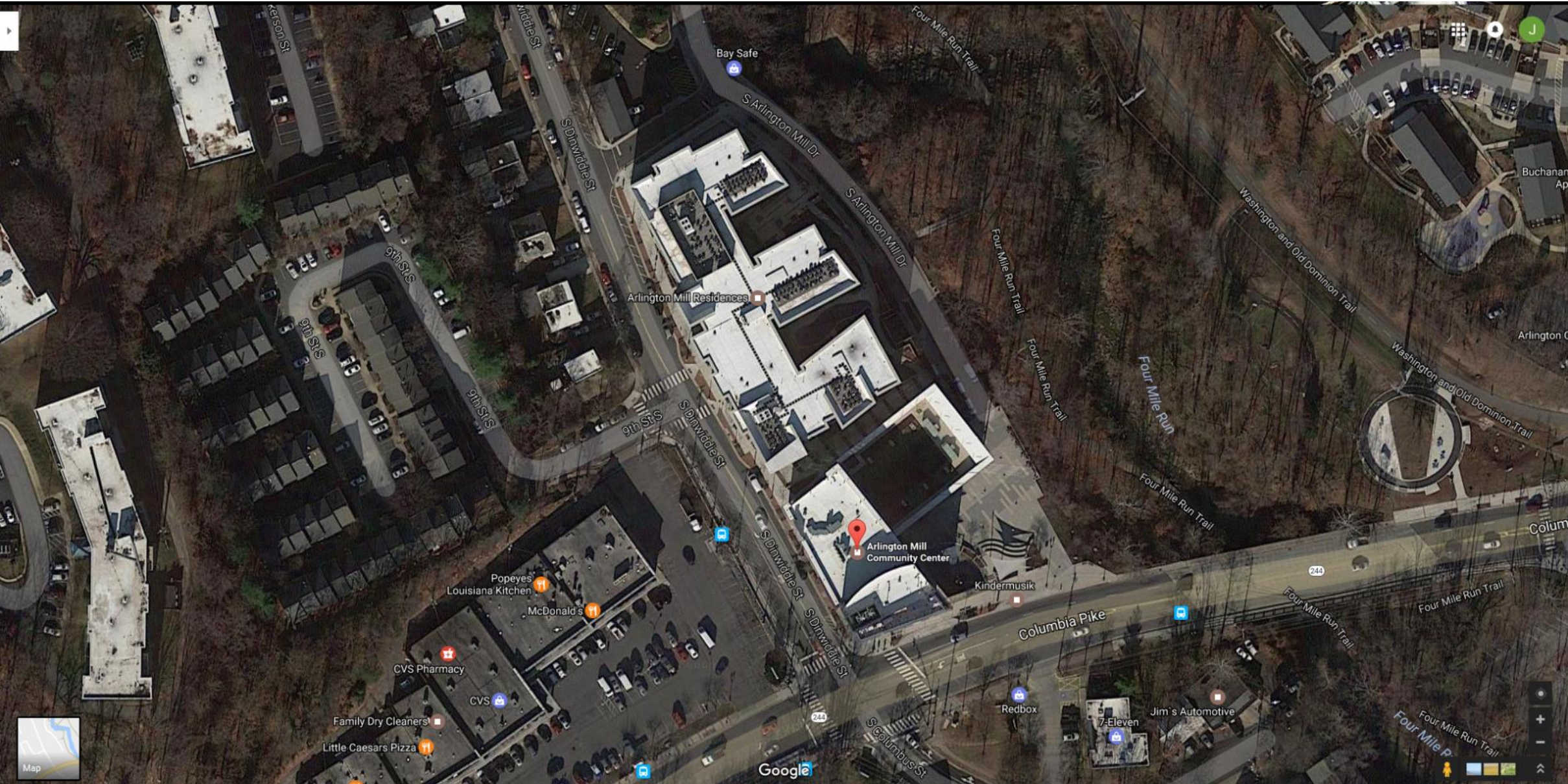
Sample near the red arrow, below the confluence of the two streams.



FMR 7

Updated March 2025

Site Location	Directions to Site	Sampling Site	Team
<p>FMR 7. Four Mile Run adjacent to the Arlington Mill Community Center, near Columbia Pike and below confluence with two tributaries.</p> <p>909 S. Dinwiddie Street</p> <p>38.857867, -77.112374</p>	<p>Park at the Arlington Mill Community Center (http://parks.arlingtonva.us/locations/arlington-mill-community-center/; https://parks.arlingtonva.us/parksfacilities/community-centers/arlington-mill-parking-rates/).</p> <p>Parking at the Center is free for less than 4 hours.</p>	<p>Enter the trail by marker “3.5 miles” on South Arlington Mill Drive. This entrance is a very short distance from the Center’s parking entrance. See pictures on the following pages.</p> <p>Walk down the trail to the concrete pedestrian bridge that crosses the stream. Take your water sample upstream of the bridge.</p>	<p>Erinn Shirley</p>



Arlington Mill Community Center - Parking at the Center is accessed via S. Arlington Mill Dr.

FMR 7 Photos

Updated March 2025



Trail entrance from S Arlington Mill Drive.



Enter the bike trail near the 3.5 mile post and trash can. Follow the left path in the photo.



Approach from 9th St S and W&OD trail. Follow left path (circled).



From W&OD trail, follow this path.



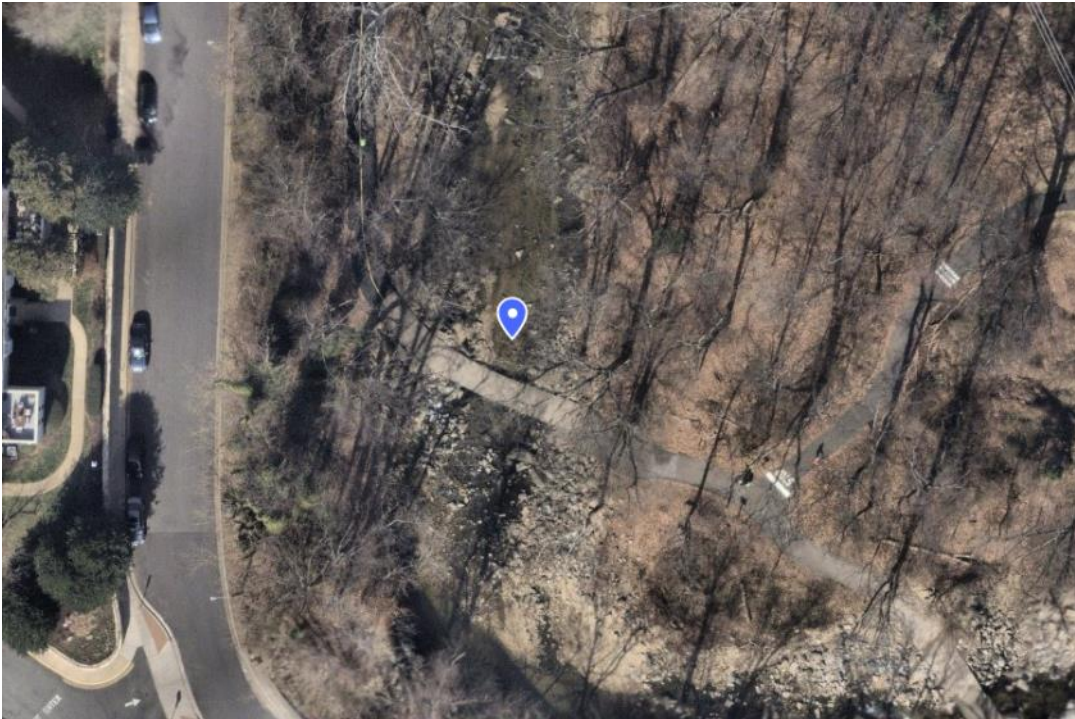
Approach to bridge from W&OD trail.



Approach to bridge from S Arlington Mill Dr.



Take your sample from the upstream side of the bridge, near the red arrow.



FMR 8

Updated March 2025

Site Location	Directions to Site	Sampling Site	Team
FMR 8. Barcroft Park (below confluence of Doctor’s Branch and Four Mile Run) 4200 S. Four Mile Run Dr. 38.849459, -77.103167	From Rt. 50, take George Mason Drive south. Make a left onto Four Mile Run Drive. The Barcroft park and community center will be on your right - http://parks.arlingtonva.us/locations/barcroft-sports-fitness-center/ From the parking area, walk between the baseball fields towards the trees. After you pass the baseball fields, go to the left along the paved trail.	You will see a pedestrian bridge over Four Mile Run – cross the bridge and walk towards the playground and picnic shelter on your right. Sample below the confluence of Doctor’s Branch and 4MR.	Erinn Shirley



Follow the sidewalk on the right of the sign.



Follow the asphalt trail to the right.



Cross the bridge and walk right.



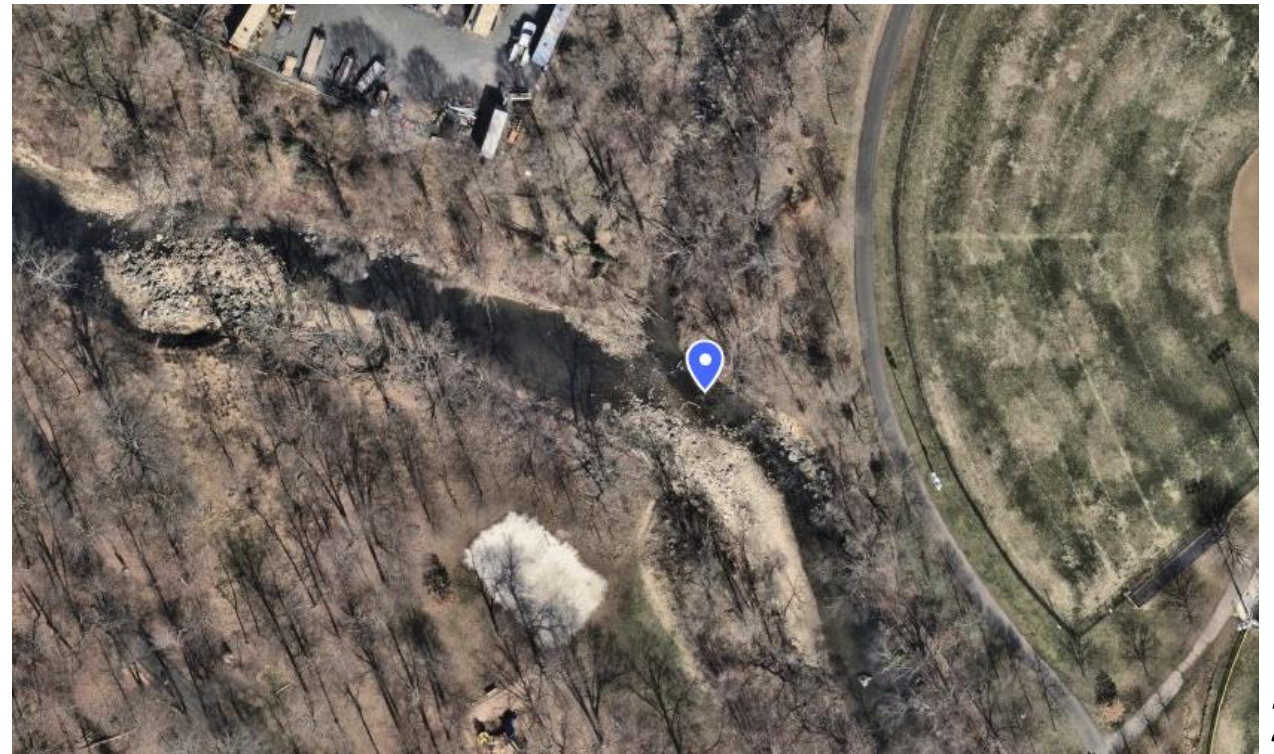
Follow the stream, past the pavilion, toward the volleyball net.

FMR 8 Photos

Updated March 2025



Approach the stream and sample near the red arrow, downstream of the confluence of Four Mile Run and Doctor's Branch.



FMR 9

Updated March 2025

Site Location	Directions to Site	Sampling Site	Team
FMR 9. Shirlington dog park. 38.843260, -77.090646	<p>Park along S. Arlington Mill Drive in Shirlington, between the cross streets of S. Taylor Street and S. Randolph Street. Walk across Arlington Mill, cross Four Mile Run via the pedestrian bridge, and turn left at the end of the bridge.</p> <p>Or</p> <p>From South Four Mile Run Drive, turn onto South Nelson Street or South Oakland Street. At the end of these streets is the parking lot for the dog park.</p>	Enter the dog park through the gates. Several yards into the dog park, exit the dog park via the first gate on your left. This is near the kiosk. Walk down the rock staircase and sample in Four Mile Run.	Diana Vaughan



Entrance to Shirlington Dog Park.



After entering, walk down the path.



Stop at the gate and exit the dog park.



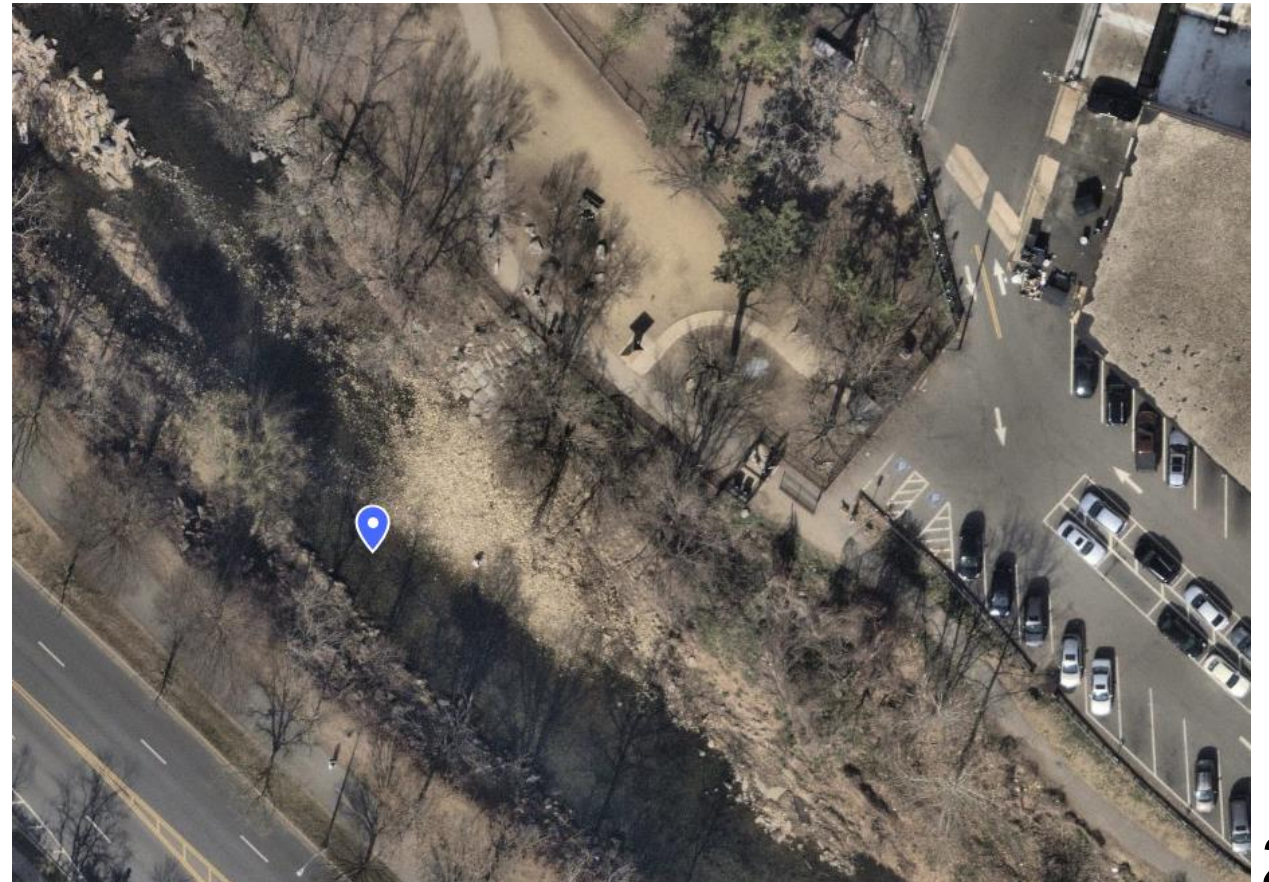
Walk down the steps.

FMR 9 Photos

Updated March 2025



Sample near the red arrow.



FMR 10

Updated March 2025

Site Location	Directions to Site	Sampling Site	Team
<p>FMR 10. Four Mile Run south of 395</p> <p>38.844400, -77.064750</p>	<p>Sample from Mt. Vernon Ave Bridge (using Becklinator sampler).</p> <p>The bridge is located just south of the intersection of S Arlington Ridge Rd and S Glebe Rd.</p> <p>S Arlington Ridge Rd becomes Mt Vernon Ave as you cross the bridge into Alexandria.</p> <p>There is a small parking lot next to the Mt Vernon Ave bridge. If that is full, there is street parking on S Joyce St in Arlington.</p>	<p>Stand on bridge and sample the upstream side of the bridge (unless access is not possible, in which case note it in the spreadsheet). Use the Becklinator sampler to retrieve the water sample.</p>	<p>Whitney Long</p>



Park in the lot with this sign.



Cross street to opposite corner of bridge.



View from correct corner.



Look over the edge and drop the Becklinator sampler in.



Site Location	Directions to Site	Sampling Site	Team
LLB 1. Lower Long Branch Troy Park, 2629 South Troy Street 38.844940, -77.071273	From Rt 50, take S. Glebe Rd. After passing the exit for 395, make a left onto 26th St (across from Maserati dealership). Turn right on Adams, then left on 27th Street South. Troy Park will be in front of you when the road ends.	Go to the right along Troy Street, and sample in the stream near Glebe Rd (where LLB flows into 4MR). Sample just downstream of the concrete flow structure.	Whitney Long



Park along South Troy Street.



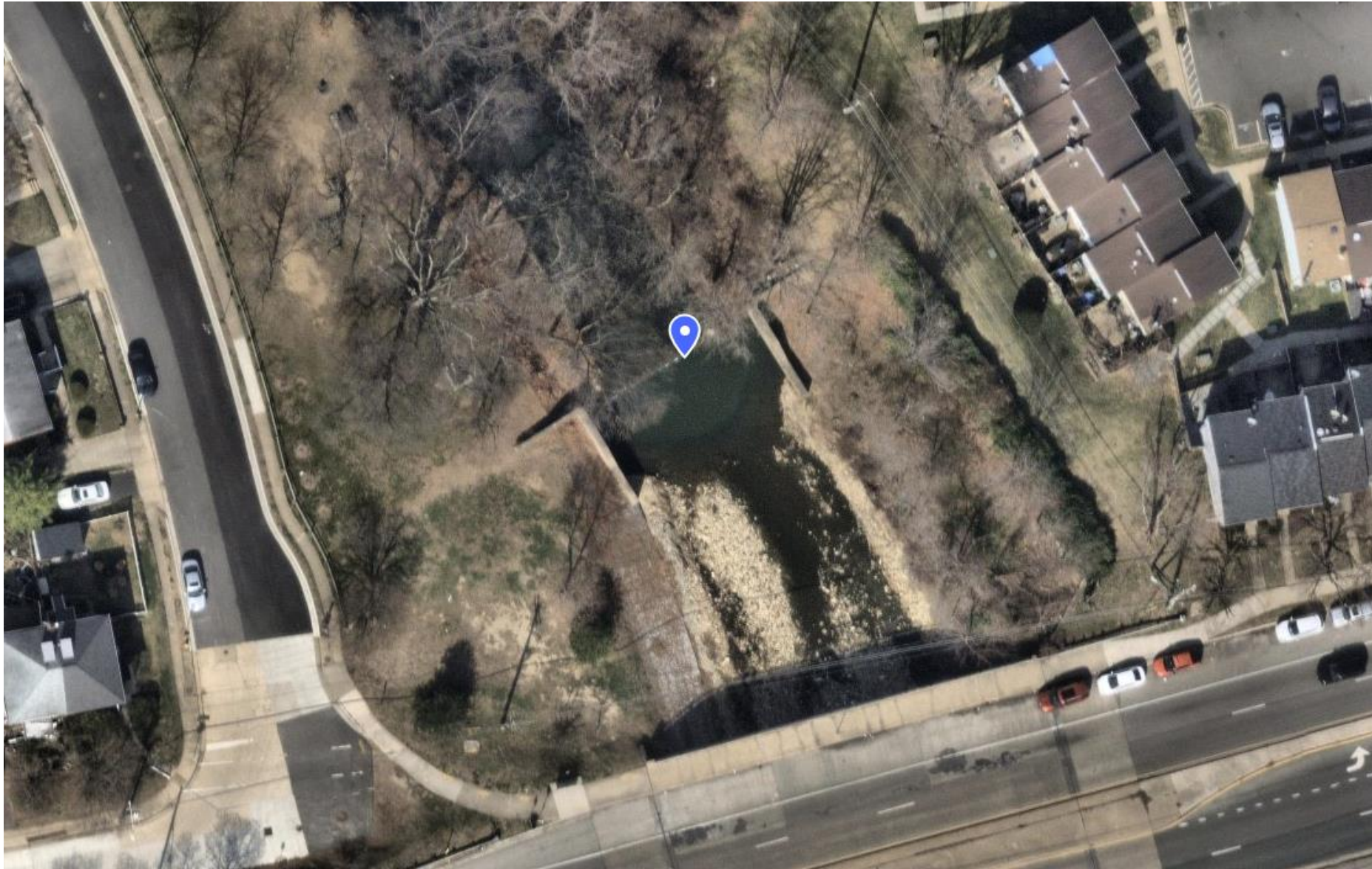
Follow the fence and cross the field.



Approach the concrete flow control structure.



Sample downstream of the structure, near the red arrow.



LBR 1 & LBR 2

Updated March 2025

Site Location	Directions to Site	Sampling Site	Team
LBR 1: Lubber Run, East 38.886940, -77.120912 LBR 2: Lubber Run, West 38.886889, -77.121019	Woodlawn Park 1325 North Buchanan Street, Arlington, VA	LBR1: Enter stream area by passing around the metal fence. When facing upstream, collect water from below the right culvert. There is only one culvert to the right. Take sample from the main flow of water below culvert LBR2: Enter stream area by passing around the metal fence. When facing upstream, collect water from below the left culverts. There are two culverts to the left. Take sample from the main flow of water below both culverts.	Hutch and Alex Brown

LBR1 and 2 Photos

Updated March 2025



N Buchanan St entrance.



N Abingdon St entrance. Follow the trail to the other side of the stream.



Walk behind the fence to access LBR 1. Climb down the rocks on the right to access LBR2.



Sample at the red arrows. LBR1 is right and LBR2 is left.

LBR1 and 2 Photos

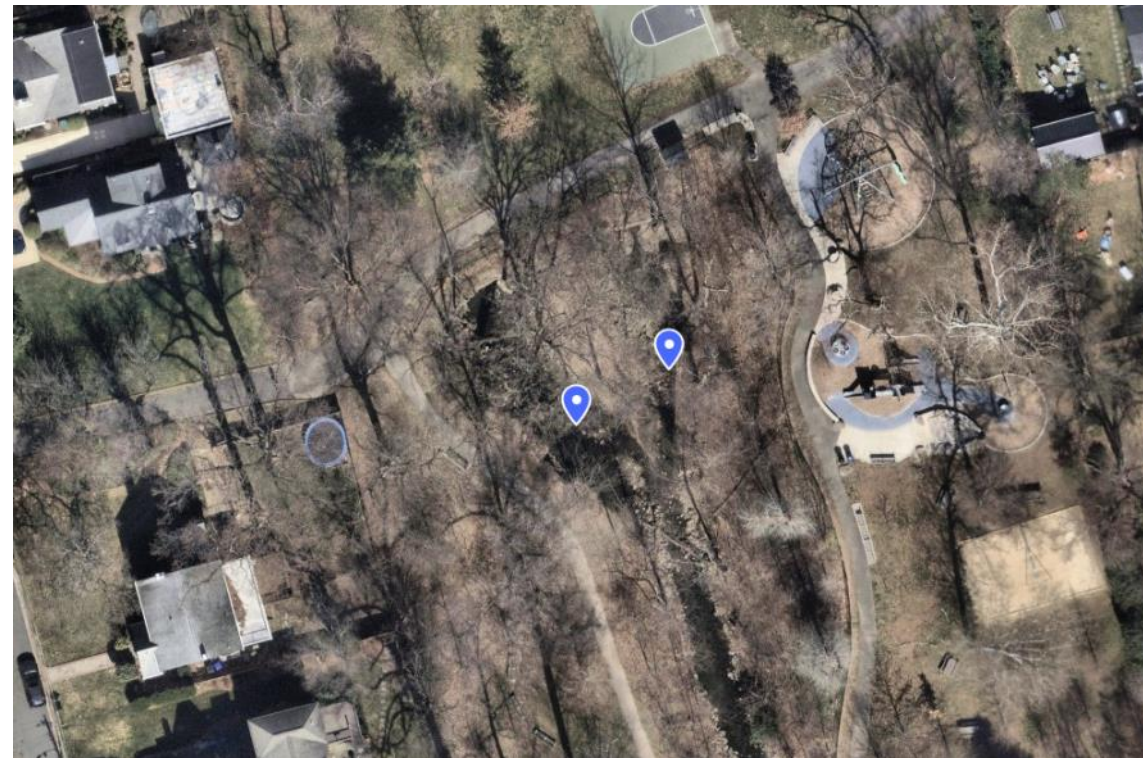
Updated March 2025



LBR2 (sample at the red arrow).



LBR1 (sample at the red arrow).



Site Location	Directions to Site	Sampling Site	Team
LBR 3. Lubber Run. 38.870894, -77.116879	This site is in Lubber Run Park. The nearest entrances are the main entrance at 200 N. Columbus St or a path from N. 4th St (a short dead end street off N. Edison).	<u>From N. Columbus St:</u> From the parking lot, stay to the right and descend the steps. Keep the amphitheater to your left and continue down to the paved walkway. Keep to the right and you will shortly come upon a low concrete bridge that crosses the stream. Sample from the upstream side of the bridge. <u>From N. 4th St:</u> Take the gravel path on the right side of the 4th St cul de sac. Follow the gravel path a short way to the paved walkway. Turn right on the paved walkway and you will shortly come upon a low concrete bridge that crosses the stream. Sample from the upstream side of the bridge.	Stephanie Martin



Parking lot from Columbus St.



Turn right.



Walk down the stairs.



Follow the path to the concrete bridge.

LBR3 Photos

Updated March 2025



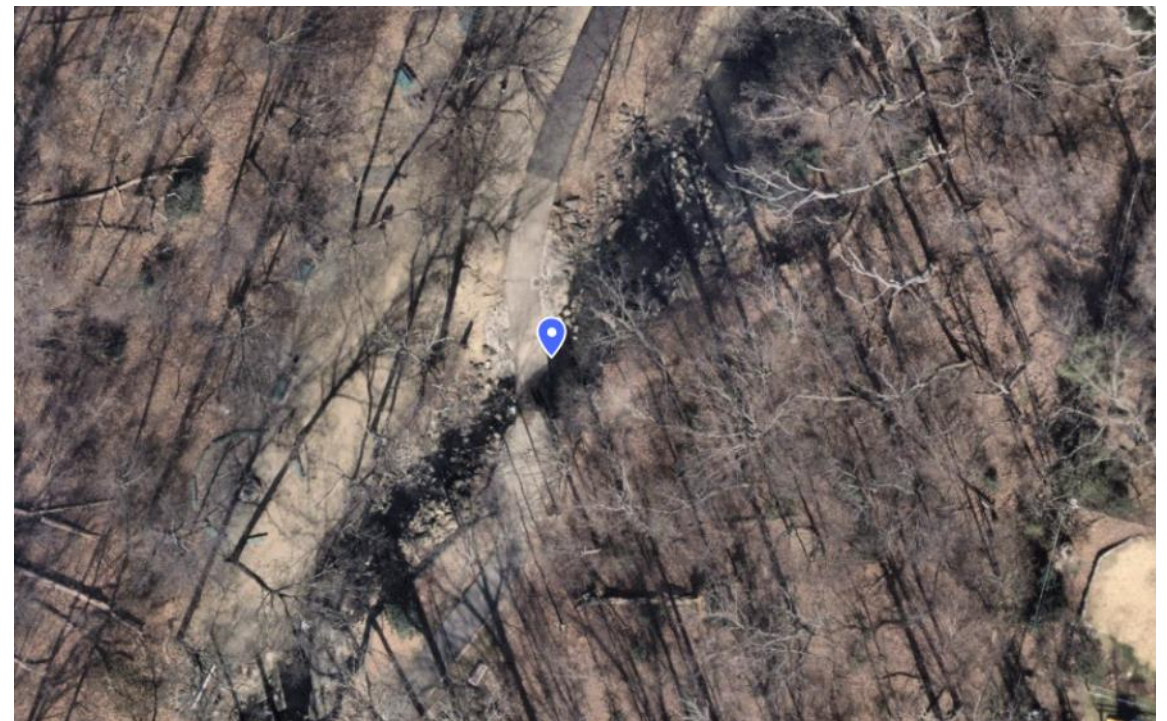
4th St entrance. Follow the gravel path.



Turn right and follow the trail to the concrete bridge.



Sample at the red arrow upstream of the bridge.



DB 1

Updated March 2025

Site Location	Directions to Site	Sampling Site	Team
DB 1: Doctor’s Branch 38.861667, -77.102263	Alcova Heights Park. 901 S. George Mason Drive Arlington, VA	Approach the playground in the park. Collect water below the sewer crossing.	Jacob Abraham



Park entrance on 8th St S.



Follow the sidewalk toward the playground.



Sample just downstream of the sewer crossing, at the red arrow.



Sample just downstream of the sewer crossing, at the red arrow.

