



Park & Recreation Commission Meeting

223 23rd Street & 2250 Crystal Drive
JBGS

TABLE OF CONTENTS

- Open Space Overview
- Pedestrian Circulation
- Open Space 10 & 11

OPEN SPACE OVERVIEW

OPEN SPACE OVERVIEW

SECTOR PLAN



PARK	SECTOR PLAN SITE GOAL	PROVIDED
PARK #10	13,000 SF	* 8,000 SF
PARK #11	3,300 SF	3,300 SF
TOTAL	16,300 SF	* 11,300 SF

NOTE:
AN ADDITIONAL 5,000 SF WILL BE PROVIDED FOR PARK #10 WITH
THE FUTURE REDEVELOPMENT OF 2221 SOUTH CLARK STREET.

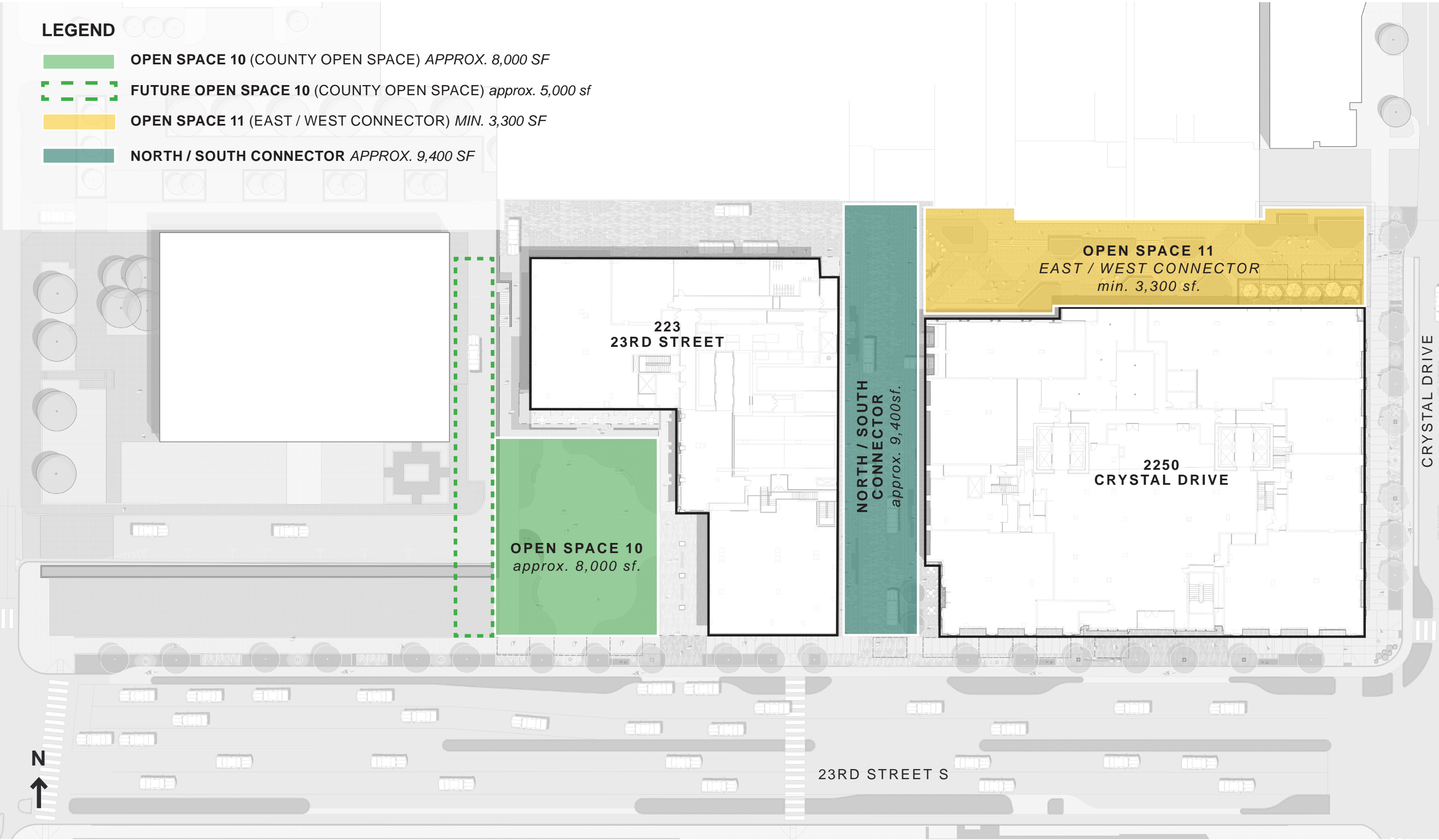
OPEN SPACE #10
(COUNTY OPEN SPACE)

OPEN SPACE #11
(EAST / WEST CONNECTOR)

OPEN SPACE OVERVIEW

LEGEND

-  **OPEN SPACE 10** (COUNTY OPEN SPACE) *APPROX. 8,000 SF*
-  **FUTURE OPEN SPACE 10** (COUNTY OPEN SPACE) *approx. 5,000 sf*
-  **OPEN SPACE 11** (EAST / WEST CONNECTOR) *MIN. 3,300 SF*
-  **NORTH / SOUTH CONNECTOR** *APPROX. 9,400 SF*

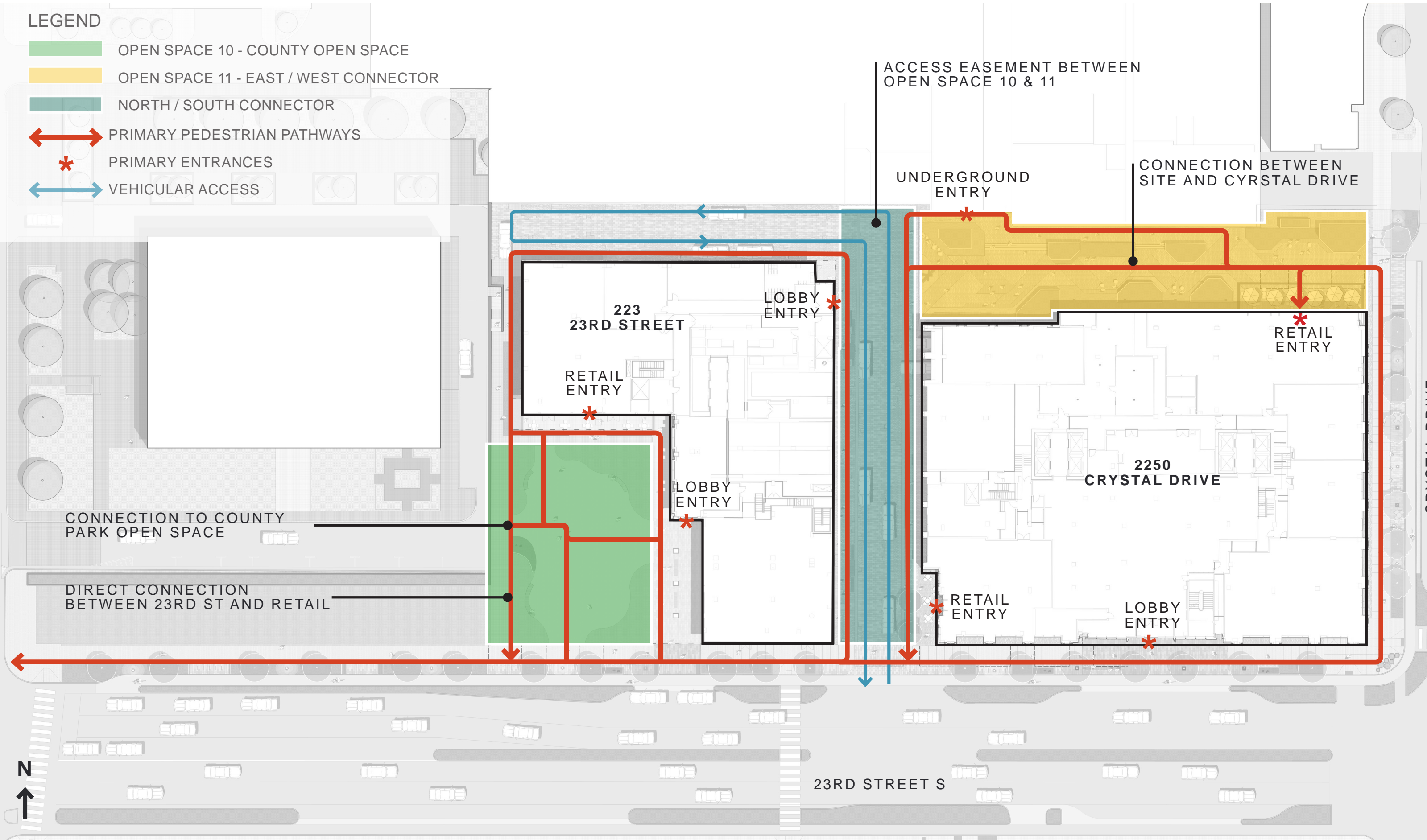


PEDESTRIAN CIRCULATION

PEDESTRIAN CIRCULATION

PEDESTRIAN CIRCULATION

- LEGEND
- OPEN SPACE 10 - COUNTY OPEN SPACE
 - OPEN SPACE 11 - EAST / WEST CONNECTOR
 - NORTH / SOUTH CONNECTOR
 - PRIMARY PEDESTRIAN PATHWAYS
 - PRIMARY ENTRANCES
 - VEHICULAR ACCESS



PRECEDENT IMAGERY - OPEN SPACE CHARACTER & AESTHETICS



Inviting



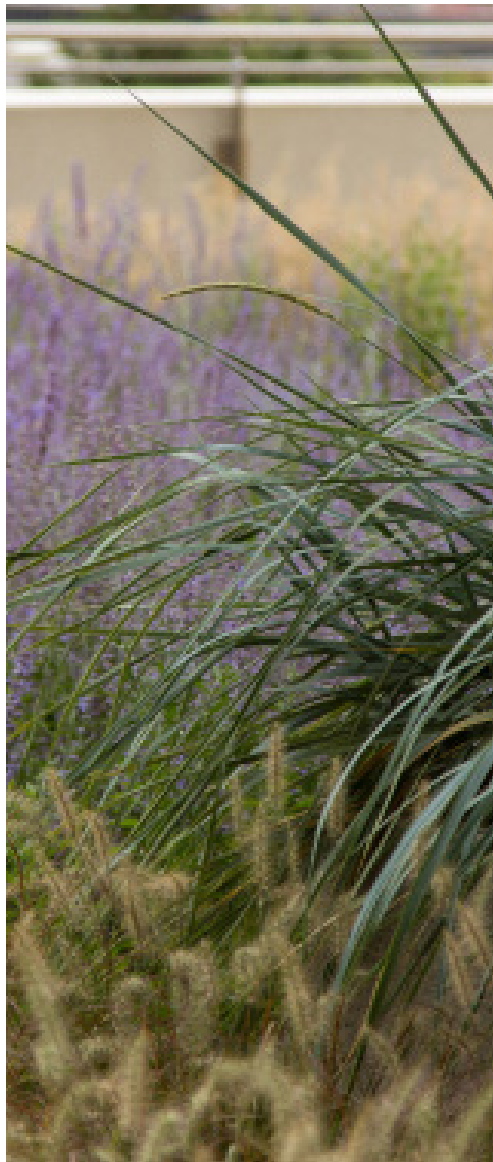
Safe



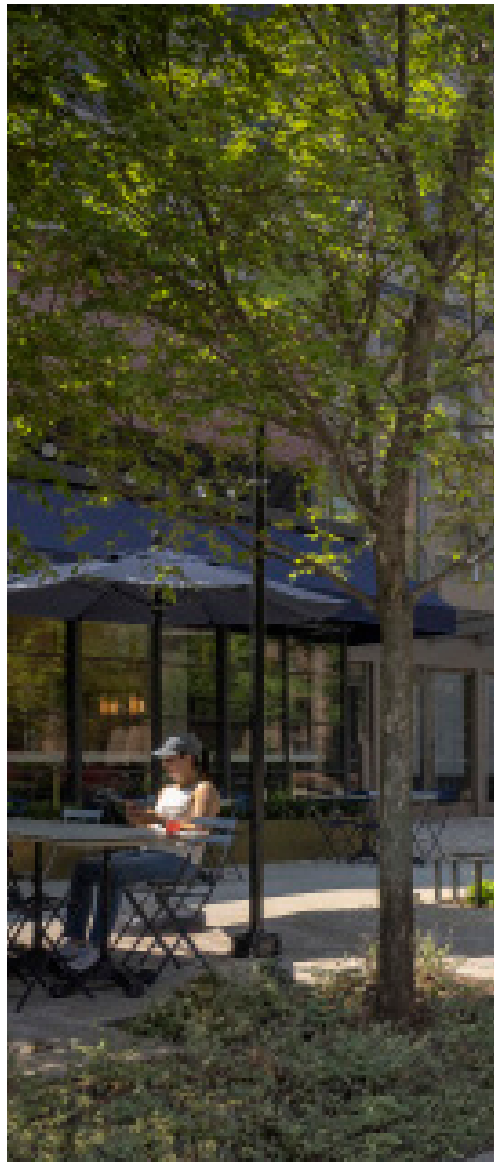
Elegant



Intentional



Lush

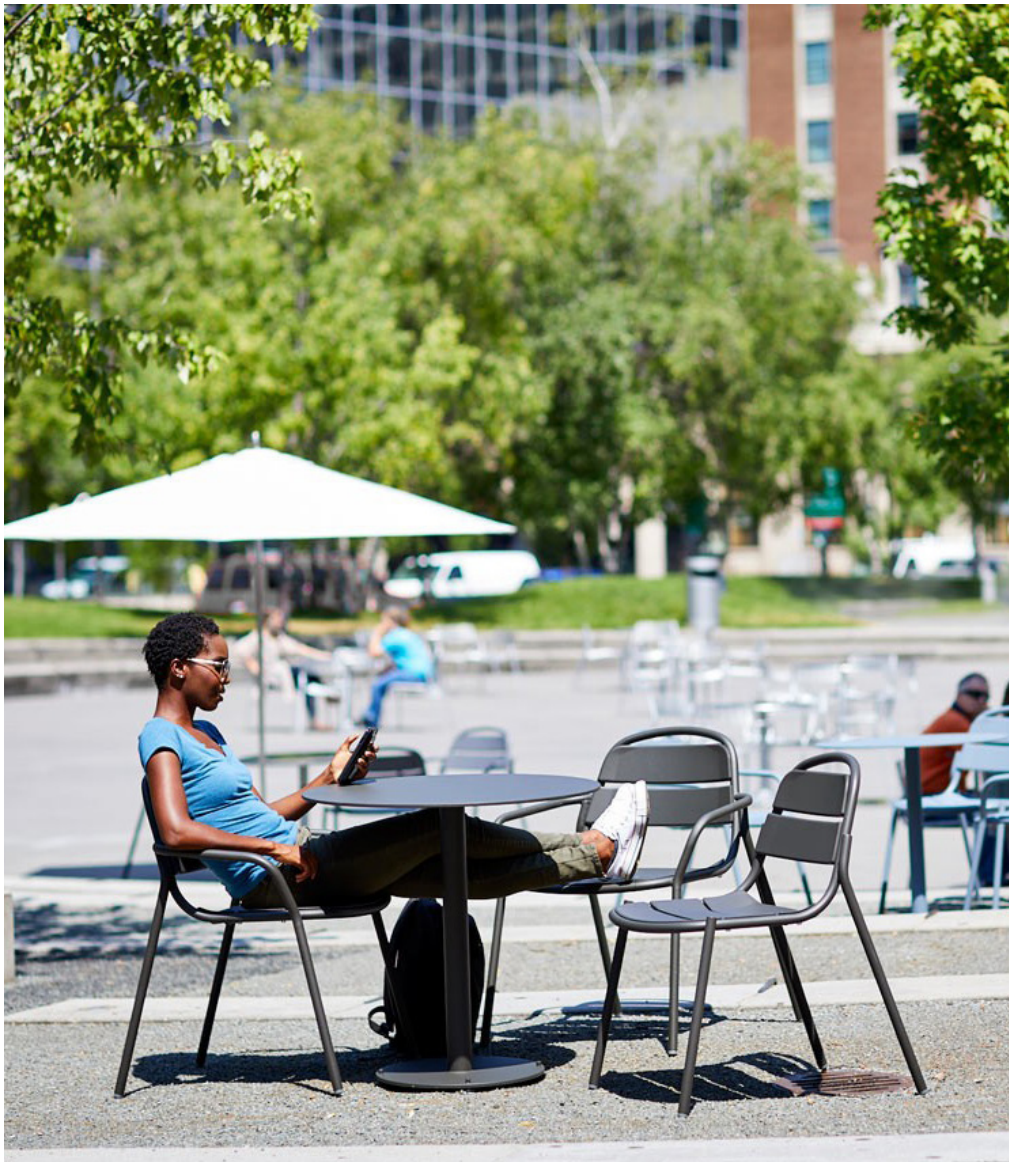


Shaded

PRECEDENT IMAGERY - OPEN SPACE PEDESTRIAN FURNISHINGS



Integrated



Flexible



Durable

OPEN SPACE 10 & 223 23RD STREET

LEGEND

OPEN SPACE 10

A

 BIOPHILIC PLANTING

B

 COUNTY OPEN SPACE: 8,000 SF

C

 PATH CONNECTING STREETSCAPE & RETAIL

D

 ENTRY TO PUBLIC OPEN SPACE

E

 INTEGRATED BENCHES

F

 PET RELIEF AREA

G

 RETAIL



PRECEDENT IMAGERY - OPEN SPACE 10 & 223 23RD STREET PROGRAM



FLEXIBLE FURNITURE



CONCERTS



PICNICS



OUTDOOR FITNESS CLASSES

OPEN SPACE 10 & 223 23RD STREET

KEY MAP



OPEN SPACE 10 & 223 23RD STREET

KEY MAP



RETAIL

OPEN SPACE
10

ENHANCED
BIOPHILIC PLANTING

ENHANCED
BIOPHILIC PLANTING

STREETSCAPE

LEVEL 2
TERRACE

23'

8'

OPEN SPACE 10 & 223 23RD STREET

KEY MAP



223 23RD STREET
STREETSCAPE

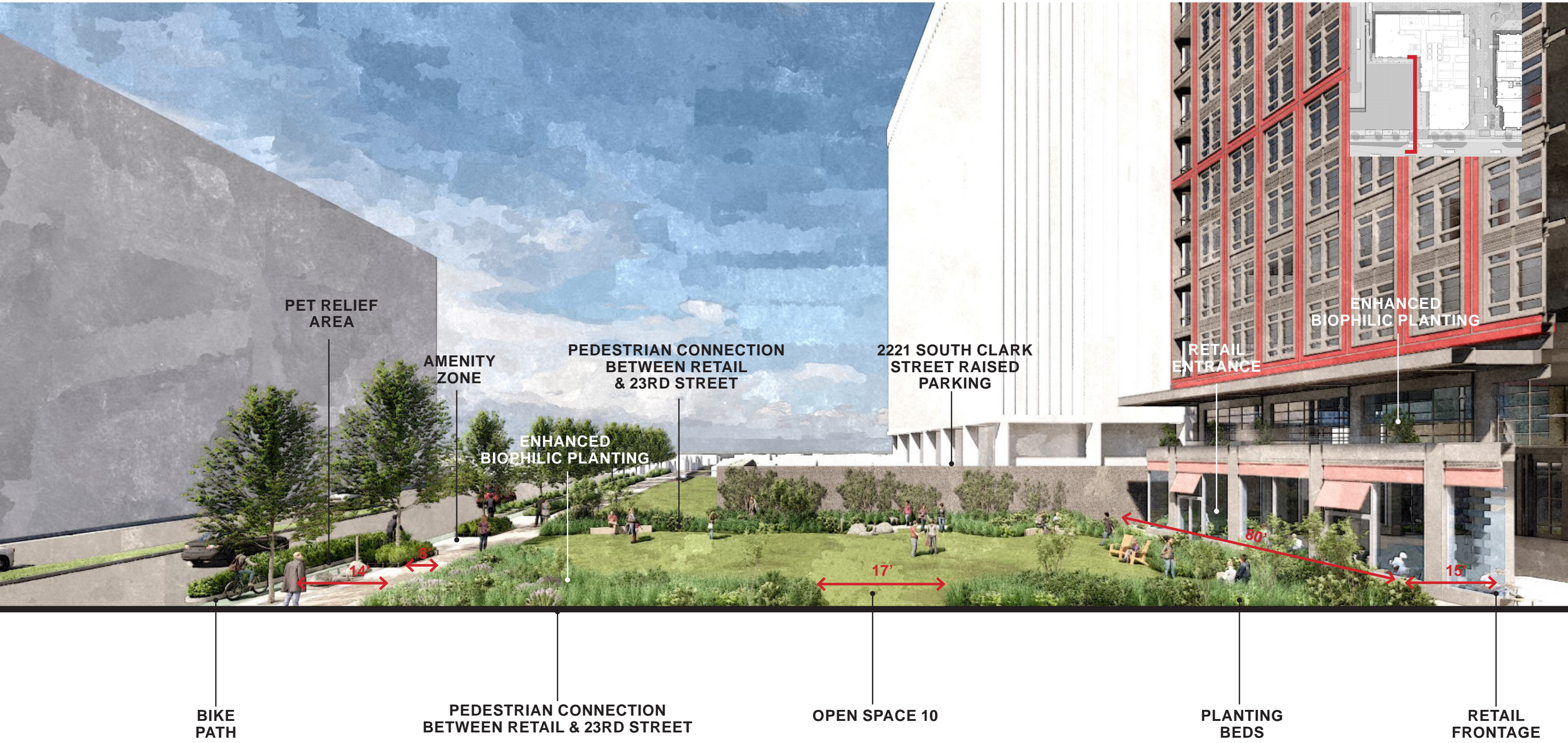
OPEN SPACE
10

ENHANCED
BIOPHILIC PLANTING

PEDESTRIAN
CONNECTION TO
STREETSCAPE

OPEN SPACE 10 & 223 23RD STREET

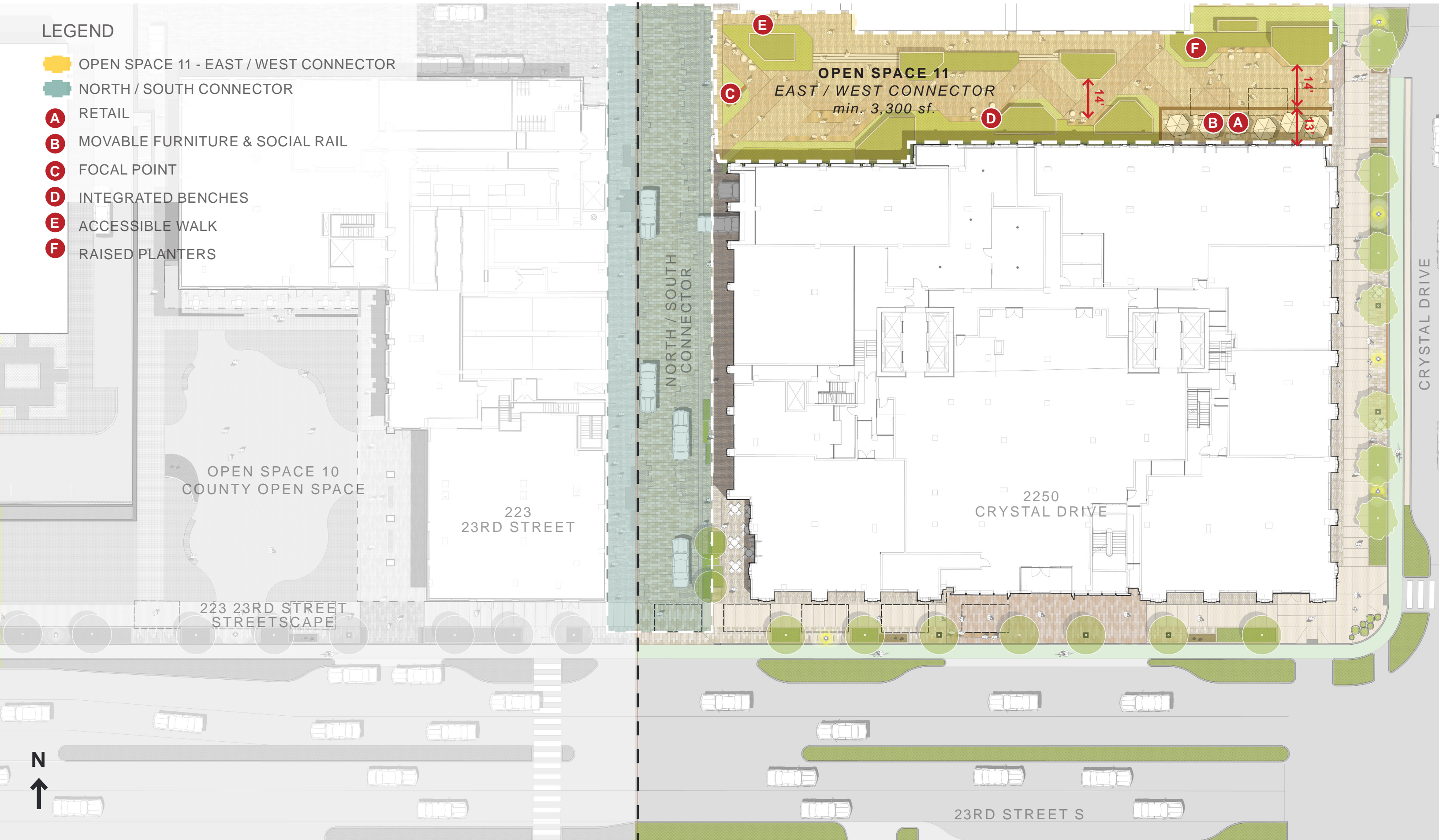
KEY MAP



OPEN SPACE 11 & 2250 CRYSTAL DRIVE | CONCEPTUAL PLAN

LEGEND

- OPEN SPACE 11 - EAST / WEST CONNECTOR
- NORTH / SOUTH CONNECTOR
- A RETAIL
- B MOVABLE FURNITURE & SOCIAL RAIL
- C FOCAL POINT
- D INTEGRATED BENCHES
- E ACCESSIBLE WALK
- F RAISED PLANTERS





CRYSTAL
DRIVE

RETAIL

INTEGRATED BENCHES
& MOVABLE FURNITURE

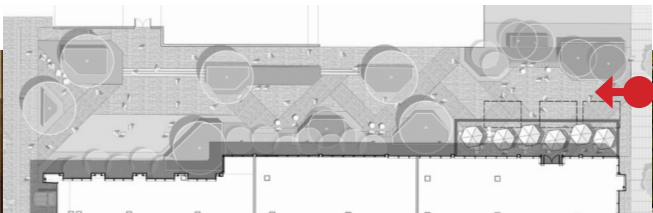
CLEAR CONNECTION
BETWEEN CRYSTAL
DRIVE & 223 LOBBY

FOCAL
POINT

223 LOBBY
ENTRANCE

OPEN SPACE 11 - CONNECTION TO CRYSTAL DRIVE

KEY MAP



OPEN SPACE 11 - CONNECTION TO EXISTING UNDERGROUND



FOCAL
POINT

UP-LIGHTS
FOCAL POINT

TREE
UP-LIGHTS

TREE
UP-LIGHTS

LIGHT
POLES

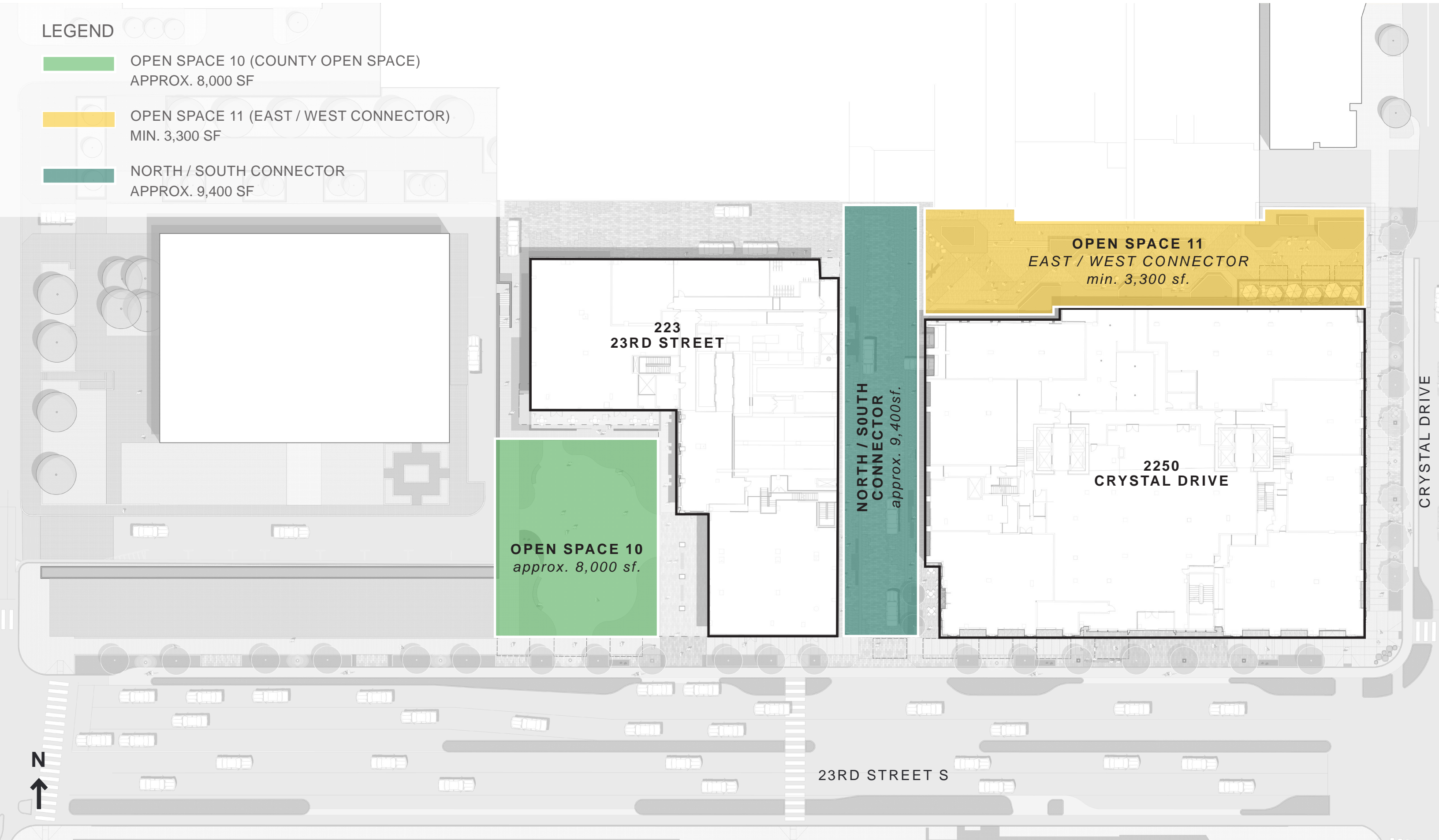
POLLINATOR
PLANTING

14'

OPEN SPACE OVERVIEW

LEGEND

- OPEN SPACE 10 (COUNTY OPEN SPACE)
APPROX. 8,000 SF
- OPEN SPACE 11 (EAST / WEST CONNECTOR)
MIN. 3,300 SF
- NORTH / SOUTH CONNECTOR
APPROX. 9,400 SF





Park & Recreation Commission Meeting

223 23rd Street & 2250 Crystal Drive
JBGS