

At Dominion Energy, we cut trees and brush inside and adjacent to our right of way corridors. This helps us maintain safe and reliable electric service for our customers. This practice also allows our crews quicker access to power structures during service restoration and maintenance work.



What is a Hazard Tree?

- Trees and tree limbs that connect with electrical lines are a leading cause of power outages, especially during storms. Hazard Trees are diseased, dead, dying, or leaning trees or limbs near power lines that have the **potential to cause power outages**.
- We cut the portion of the tree that may hit the line. This may mean taking the entire tree down.

Are there tree and vegetation guidelines?

- We follow the **American National Standard for Tree Care Operations (ANSI A300)** for tree trimming—supported by International Society of Arboriculture certified arborists and other tree care experts. This method leaves remaining limbs intact and helps direct future growth away from power lines.
- At first, ANSI A300 trimming may appear drastic. However, trees are healthier in the long-term since fewer cuts are used. Affected areas callous quickly, which reduces decay and makes future trimming less stressful for the tree and less noticeable.
- We also follow **Integrated Vegetation Management (IVM)**, a practice that promotes desirable low-growth native species and controls the spread of non-native invasive species.
- IVM creates a positive environmental impact for native plants and pollinators. IVM strategies reduce the volume and environmental impact of routine vegetation maintenance.

How often do you manage trees and other vegetation?

- We regularly patrol lines to monitor vegetation growth. Transmission lines are routinely maintained about every three to four years.

Who is responsible for removing felled trees and debris?

- The disposal of tree debris is determined by the established easement agreement. Each property's easement is unique. If you have questions about your easement, please contact our right of way team by email etrow@dominionenergy.com or call 800-215-8032.

How do you manage vegetation in the right of way?

- We carefully spot-treat woody-stemmed growth using low volume applications of EPA approved, non-restricted use herbicides.
- We spray only the undesirable plant species (as opposed to broadcast applications). "Low volume" application means the Company uses only the volume of herbicide necessary to remove the selected plant species.
- The Company uses licensed contractors to perform this work. They are either certified applicators or registered technicians in the Commonwealth of Virginia.

Our team is dedicated to being respectful of your property and providing as much information as possible. If you have questions or concerns about the right of way corridor, please email etrow@dominionenergy.com or call 800-215-8032.



For the safety of the public and our Dominion Energy workers, there are strict guidelines for maintaining a safe transmission right of way. If your property is within or adjacent to the right of way, these guidelines will help you plan your landscaping:

- Within the entire width of the right of way, plants may not exceed 10 feet at maturity.
- Within the width of a transmission structure, only short grasses and bushes are allowed, no tree canopies.
- Depending on the urban or rural setting, tall trees or plants near the right of way width may be removed, significantly trimmed, or periodically treated with herbicides by Dominion Energy.
- Tree placement considerations:
 - Trees which are too tall or planted too close to a transmission structure can fall onto wires, causing a ground arc.
 - If trees are planted within the wire zone, broken wires can fall onto them, causing a fire.
 - Due to wind, wires will swing and can contact trees which are planted too close to the structure. This could cause a ground arc.

At Dominion Energy, we control woody vegetation within our right of way corridors. This helps us maintain safe and reliable electric service for our customers. This practice also allows our crews quicker access to power structures during service restoration and maintenance work.



What is Our Goal?

- Trees and tree limbs that connect with electrical lines are a leading cause of power outages, especially during storms. Our goal is to prevent an outage caused by vegetation growing into the lines from within our easement.
- Herbicide applications, within the easement, provide an array of benefits to the local ecosystem while helping to prevent power outages.
- Our rights to apply herbicides are established by a property easement agreement and specifically refer to tall or fast-growing vegetation that may impact our facilities within the rights of way

What is an Herbicide Application?

- There are a variety of different herbicide application methods. The two most common within our rights of way are: Low-Volume Foliar Herbicide Application and Cut-Stump Herbicide Application
- Low-Volume Foliar Herbicide Application:
 - An herbicide mixture is selectively applied to the foliage of the target species with a backpack sprayer.
 - A Low-Volume Application allows the applicator to “target” only the individual stem that needs to be controlled, providing little to no “off target” control of desirable vegetation.
- Cut-Stump Herbicide Application:
 - A herbicide mixture applied directly to the stump after the vegetation has been cut.
 - A Cut-Stump Application allows for the removal of the above ground portion of the target species while also achieving control of the root system.

Who and What?

- Who applies the herbicide?
 - The Company contracts with licensed pesticide businesses in your state to perform herbicide applications.
 - In Virginia, this means a VDACS licensed commercial applicator/registered technician is applying the herbicide mixtures.
- What herbicides are being used?
 - Contractors are applying EPA regulated products that have been registered for use in your state.
 - The Company requires the use of “General Use” pesticides.

We understand trees are an important part of your property. Our team is dedicated to being respectful and we work hard to minimize our footprint while maintaining grid reliability and community safety. If you have questions or concerns about the right of way corridor, please email etrow@dominionenergy.com or call 800-215-8032.



Increased Pollinator Habitat

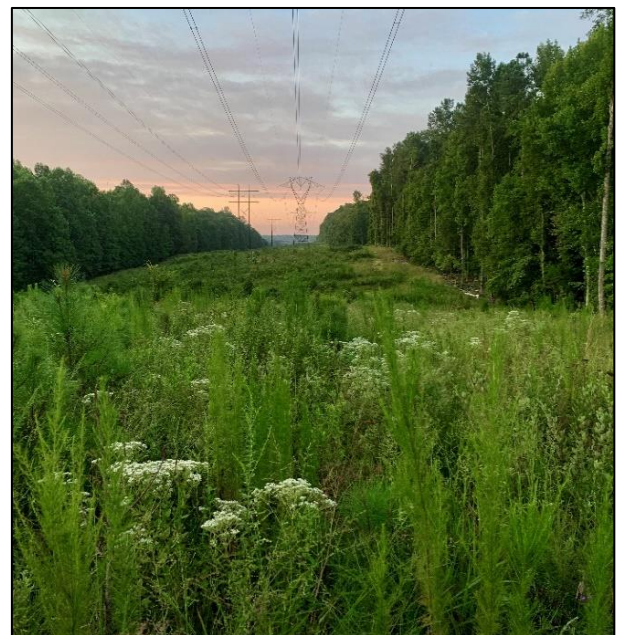
- Pollinators play a vital role in supporting biodiversity and regulating local ecosystems.
- Selective Low-Volume Herbicide Applications remove rapid growth, competitive vegetation that shades out/hinders the establishment of desirable pollinator vegetation.
- Quite often, the seeds of flowering pollinator species lie dormant in the soil unable to compete with surrounding vegetation.
- Rights of way have the potential to transition from undesirable vegetation to a thriving pollinator habitat by simply removing the competition.

Promote Wildlife Habitat

- By controlling undesirable vegetation, we can promote early successional habitat for local wildlife.
- Early successional plants are generally herbaceous annuals and perennials such as grasses, wildflowers, and low growing shrubs. This habitat provides food and shelter for a variety of wildlife species.

Invasive Species Control

- Our herbicide program helps with controlling non-native federally listed invasive plant species within our rights of way such as: Bamboo – Kudzu – Ailanthus
- Invasive plant species harm their local environment by adversely affecting ecosystems and out-competing desired native plant species.



Safe Today for a Better Tomorrow

We understand trees are an important part of your property. Our team is dedicated to being respectful and we work hard to minimize our footprint while maintaining grid reliability and community safety. If you have questions or concerns about the right of way corridor, please email etrow@dominionenergy.com or call 800-215-8032.