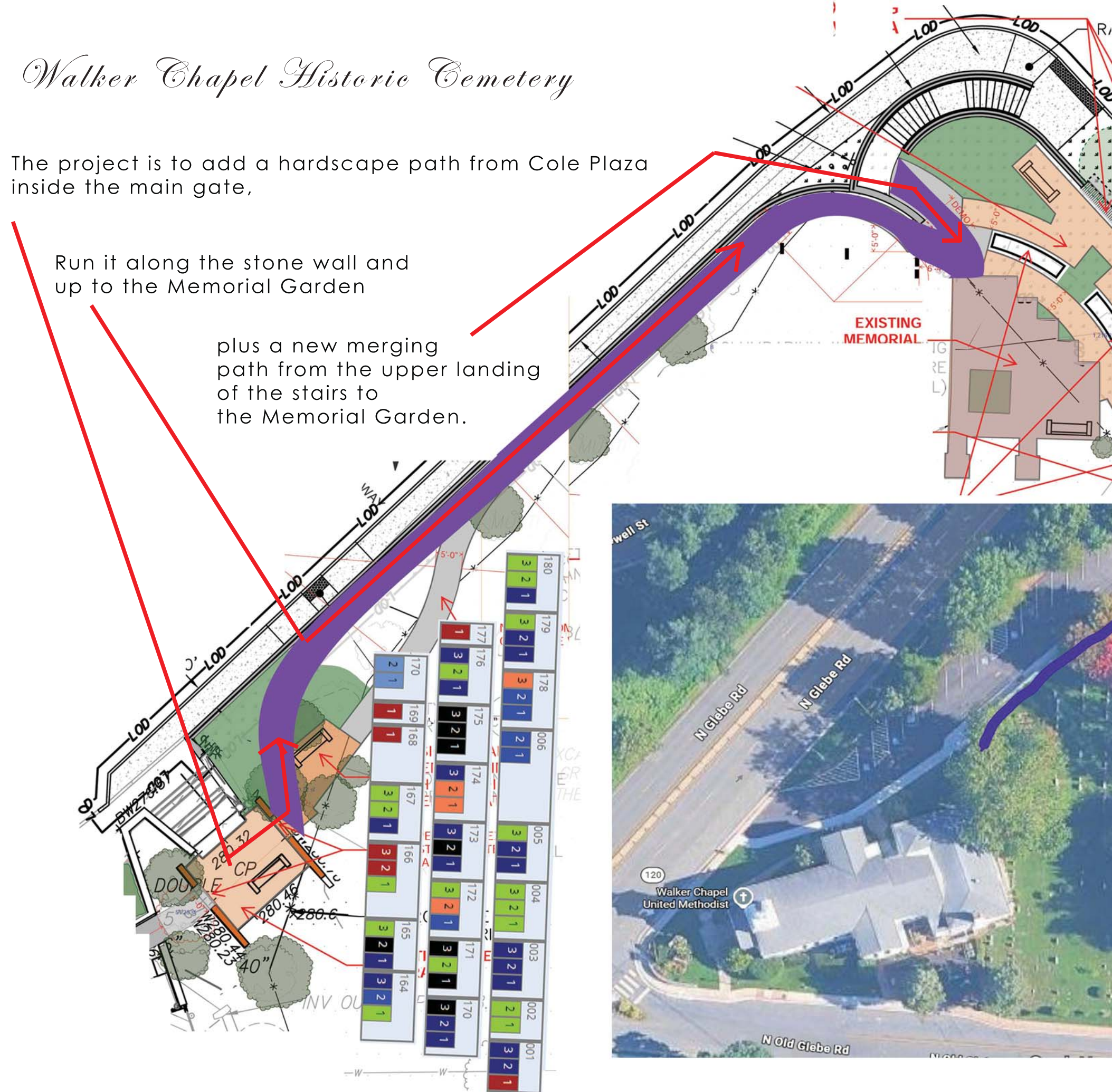


Walker Chapel Historic Cemetery

The project is to add a hardscape path from Cole Plaza inside the main gate,

Run it along the stone wall and up to the Memorial Garden

plus a new merging path from the upper landing of the stairs to the Memorial Garden.



March 21, 2026

Contact:

Larry Danforth
 Cemetery Manager
 703-303-1739
 cemetery@walkerchapel.org



Walker Chapel Historic Cemetery

March 21, 2026

Contact: Larry Danforth
Cemetery Manager
703-303-1739
cemetery@walkerchapel.org

The project is to add a hardscape path from Cole Plaza inside the main gate, through Tal's Garden, and curve to match the wall,

Run it along the stone wall and up to the Memorial Garden

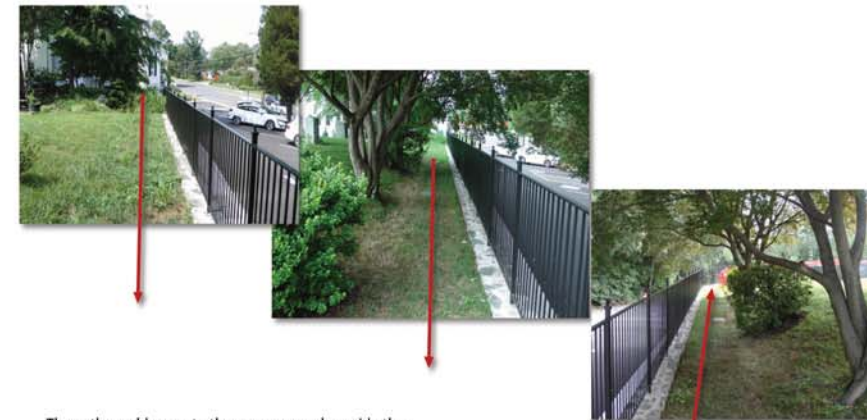
The path starts on the cemetery side of the Cole Plaza where a new cut will made in the decorative wall to allow the path to continue between the two trees. We would move the bush to the right of the arrow head to a new location.



The path would pass between the two trees, past what we call Tal's Garden, being respectful of nearby gravesites.



It would emerge onto the lawn.

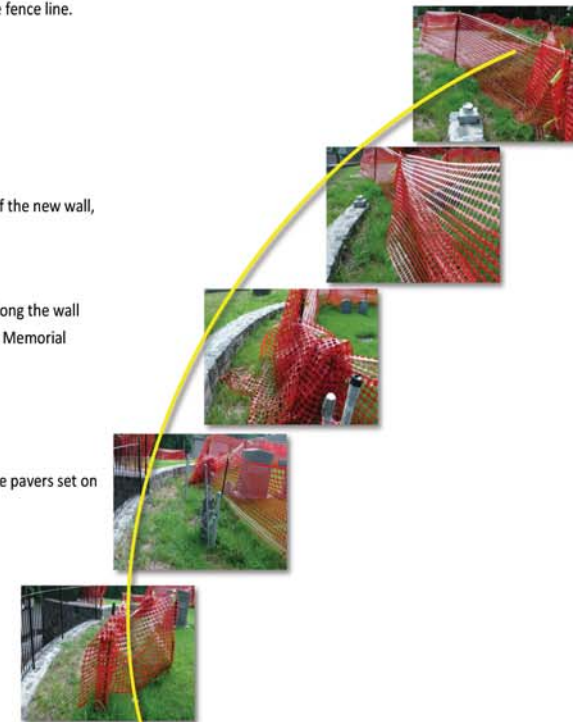


The path would move to the open space along side the new fence and continue down the fence line.

The path would travel the length of the new wall, just inside the fence.

At the end the path would curve along the wall with a slight rise to the level of the Memorial Garden.

Construction would be a permeable pavers set on a concrete reinforced base.



plus a new merging path from the upper landing of the stairs to the Memorial Garden.

CONSTRUCTION

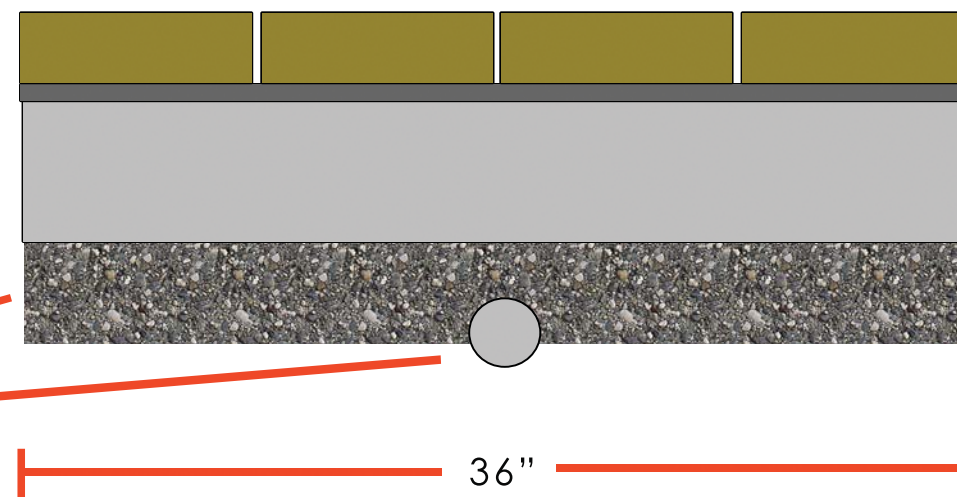
6"x9" rectangular pavers,
color match both ends.

Polymer sand, dampen, and
vibrator tamper

4000 PSI straight white concrete.
broom finish, cut expansion
joints every 3 feet.

3/4" Drain Gravel Compacted

Wall light electrical conduit

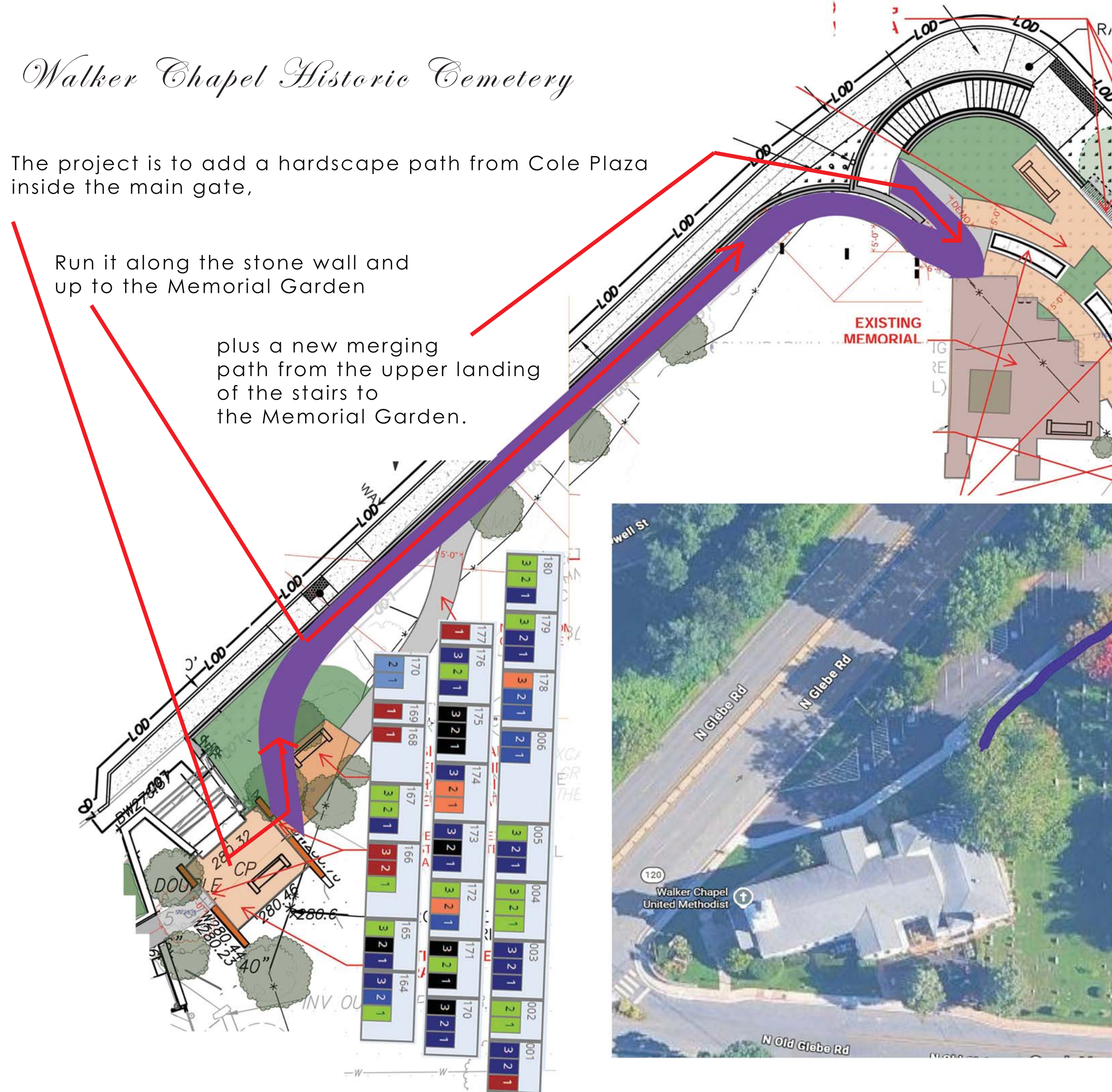


Walker Chapel Historic Cemetery

The project is to add a hardscape path from Cole Plaza inside the main gate,

Run it along the stone wall and up to the Memorial Garden

plus a new merging path from the upper landing of the stairs to the Memorial Garden.



March 21, 2026

Contact:

Larry Danforth
 Cemetery Manager
 703-303-1739
 cemetery@walkerchapel.org



Walker Chapel Historic Cemetery

March 21, 2026

Contact: Larry Danforth
Cemetery Manager
703-303-1739
cemetery@walkerchapel.org

The project is to add a hardscape path from Cole Plaza inside the main gate, through Tal's Garden, and curve to match the wall,

Run it along the stone wall and up to the Memorial Garden

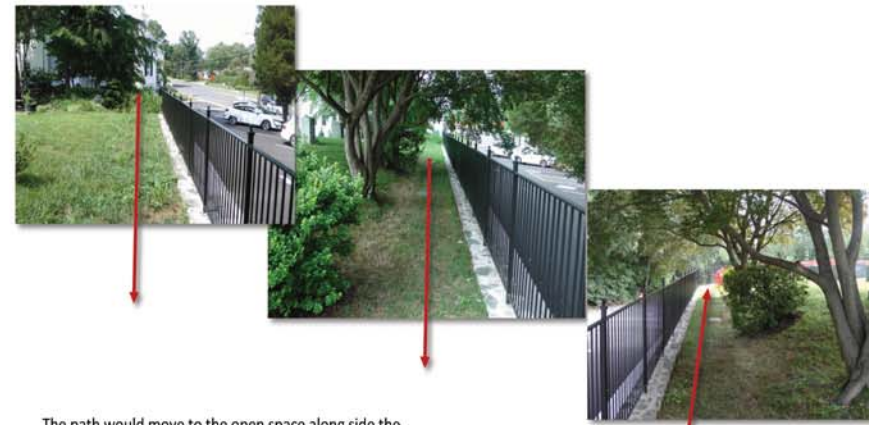
The path starts on the cemetery side of the Cole Plaza where a new cut will made in the decorative wall to allow the path to continue between the two trees. We would move the bush to the right of the arrow head to a new location.



The path would pass between the two trees, past what we call Tal's Garden, being respectful of nearby gravesites.



It would emerge onto the lawn.

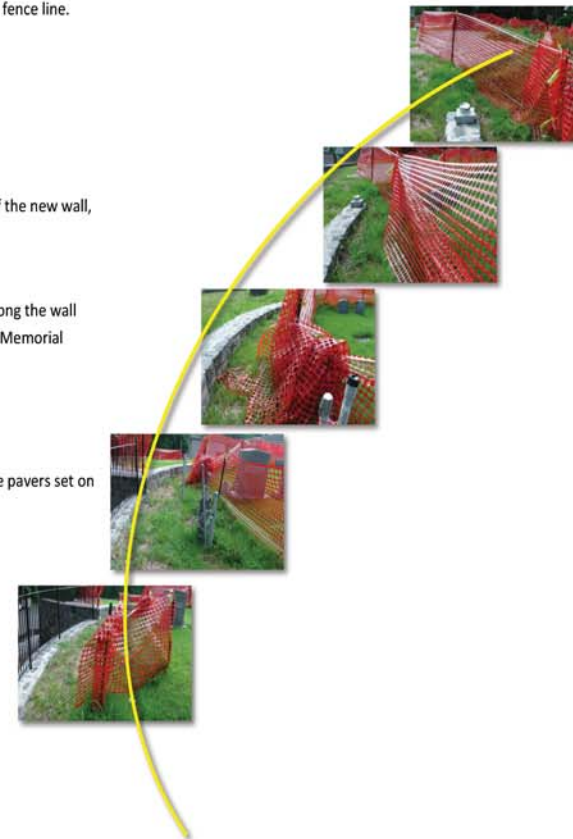


The path would move to the open space along side the new fence and continue down the fence line.

The path would travel the length of the new wall, just inside the fence.

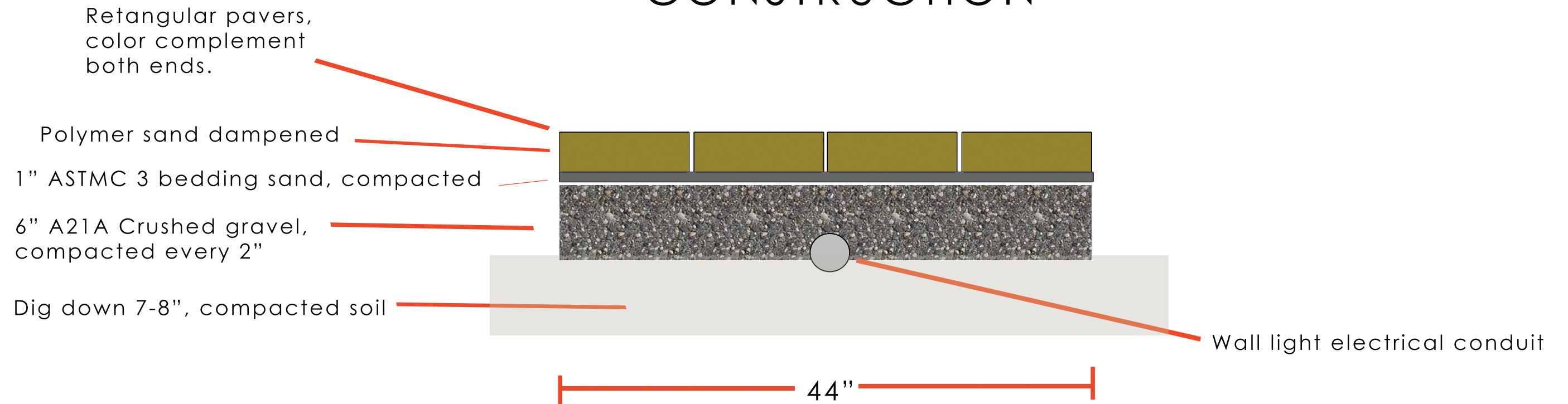
At the end the path would curve along the wall with a slight rise to the level of the Memorial Garden.

Construction would be a permeable pavers set on a concrete reinforced base.



plus a new merging path from the upper landing of the stairs to the Memorial Garden.

CONSTRUCTION



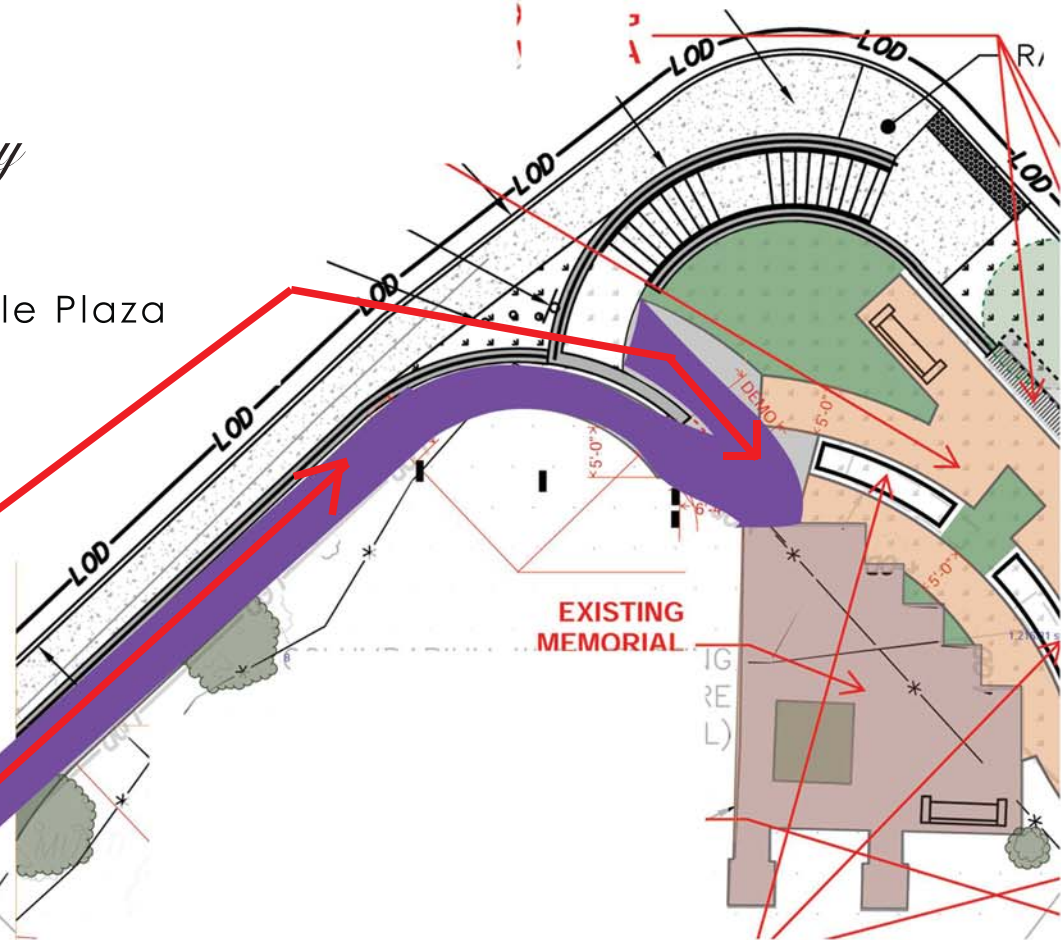
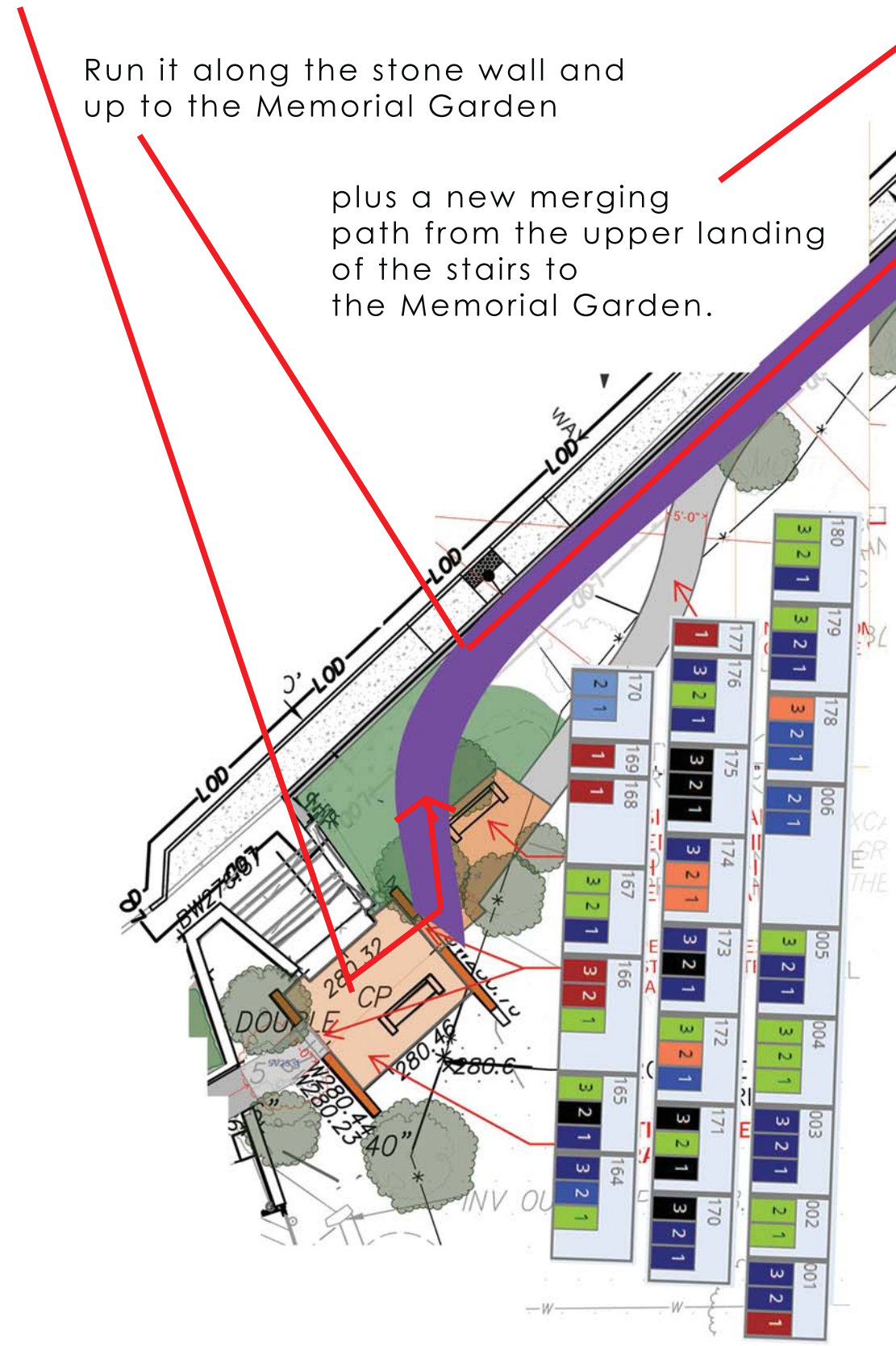
After HALRB approval and as we proceeded to request final approval and funding from the Walker Chapel Leadership Board, the bidding contractors, the Chapel Architect, Funeral Home contacts, and construction documentation raised consensus that the original 36" wide walkway was a problem. The 36" width is sufficient to accommodate the folding cart (called a Church Truck) with casket. But, if the Church Truck with a 22" wheel base started to roll crooked, it might go off edge of the path. On the advice of the group, the width was increased by 8" to 44". The Chapel Leadership Board approved the change and the change is herein submitted to the HALRB for approval.

Walker Chapel Historic Cemetery

The project is to add a hardscape path from Cole Plaza inside the main gate,

Run it along the stone wall and up to the Memorial Garden

plus a new merging path from the upper landing of the stairs to the Memorial Garden.



March 21, 2026

Contact:

Larry Danforth
 Cemetery Manager
 703-303-1739
 cemetery@walkerchapel.org

HALRB APPROVED
COA ISSUED ON May 20, 2026
FIELD CHANGES TO EXTERIOR COMPONENTS OF APPROVED PLANS ARE NOT PERMITTED. FOR INFORMATION CALL 703-228-3549.

Walker Chapel Historic Cemetery

March 21, 2026

Contact: Larry Danforth
 Cemetery Manager
 703-303-1739
 cemetery@walkerchapel.org

The project is to add a hardscape path from Cole Plaza inside the main gate, through Tal's Garden, and curve to match the wall,

Run it along the stone wall and up to the Memorial Garden

HALRB APPROVED
COA ISSUED ON May 20, 2026

FIELD CHANGES TO EXTERIOR COMPONENTS OF APPROVED PLANS ARE NOT PERMITTED. FOR INFORMATION CALL 703-228-3549.

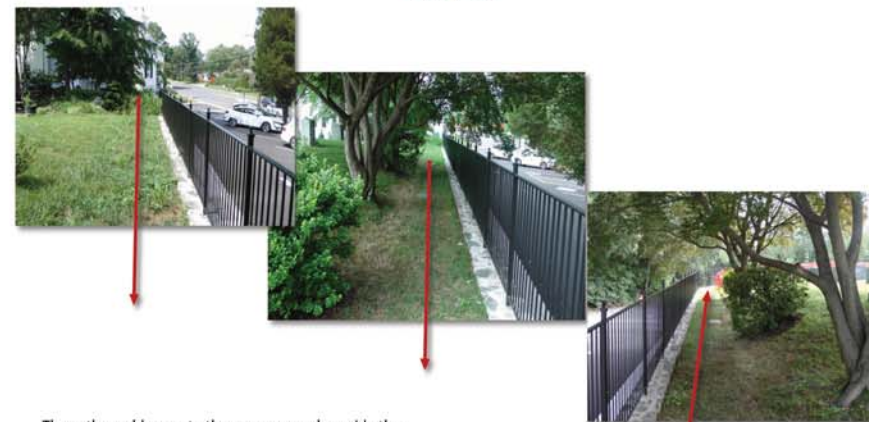
The path starts on the cemetery side of the Cole Plaza where a new cut will made in the decorative wall to allow the path to continue between the two trees. We would move the bush to the right of the arrow head to a new location.



The path would pass between the two trees, past what we call Tal's Garden, being respectful of nearby gravesites.



It would emerge onto the lawn.

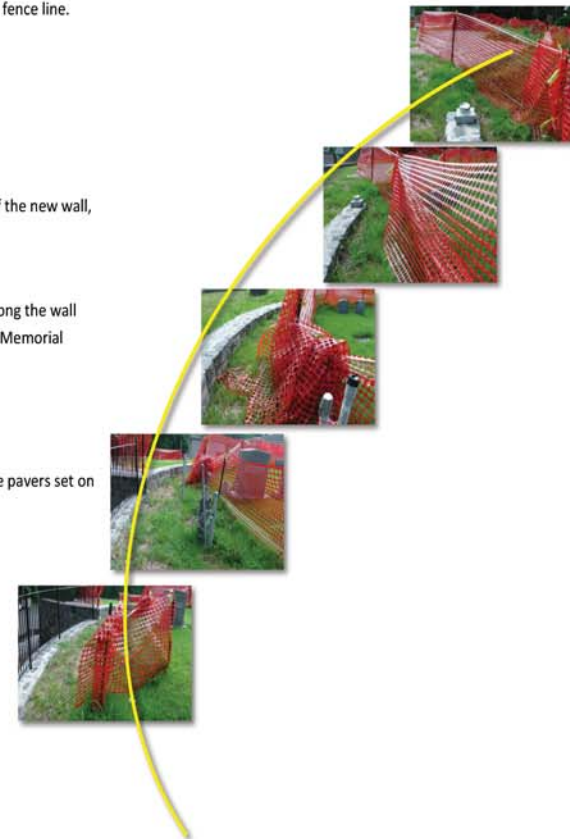


The path would move to the open space along side the new fence and continue down the fence line.

The path would travel the length of the new wall, just inside the fence.

At the end the path would curve along the wall with a slight rise to the level of the Memorial Garden.

Construction would be a permeable pavers set on a concrete reinforced base.

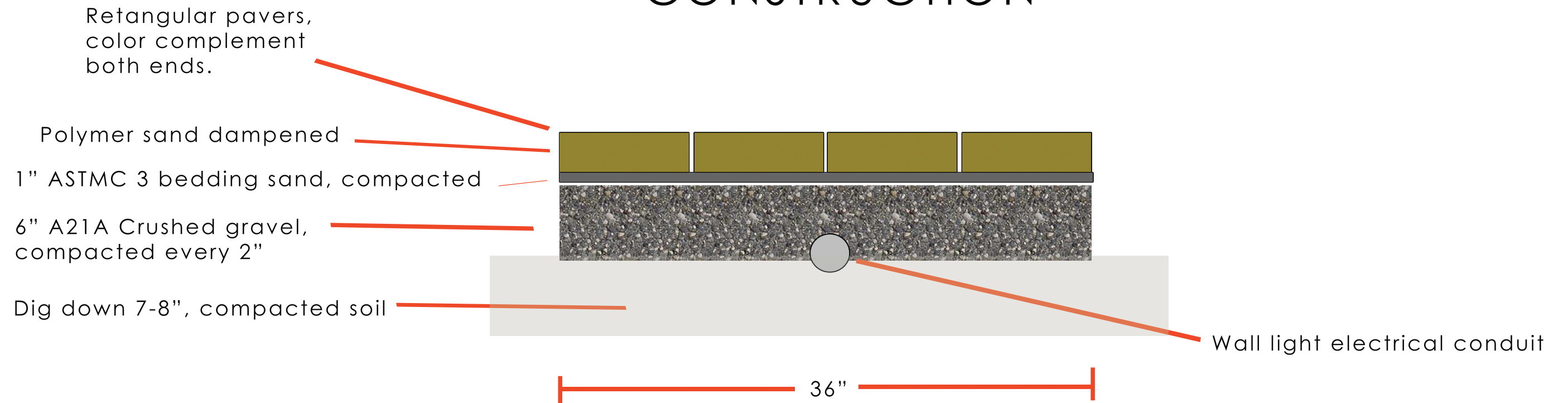


plus a new merging path from the upper landing of the stairs to the Memorial Garden.

HALRB APPROVED
COA ISSUED ON May 20, 2026

**FIELD CHANGES TO EXTERIOR
COMPONENTS OF APPROVED PLANS ARE
NOT PERMITTED. FOR INFORMATION CALL
703-228-3549.**

CONSTRUCTION





INTRODUCTION: BACKGROUND AND CURRENT CHALLENGES

Constructed in the 1940s, the church's office/education building wing is the oldest part of the current church (the sanctuary wing was added in 1959-1960). The entire office/education wing was gutted and renovated in 2000, including the installation of a new HVAC system.

Each of the three floors are served by twin gas-fired furnaces with air conditioning cooling coils supported by pad-mounted condenser units at two locations on the church grounds near the building's exterior wall. Each twin furnace system requires one condensing unit to support the air handling unit containing a cooling coil.

The HVAC equipment was manufactured in 1999, and is well beyond its expected service life. The condenser serving the office floor level has failed, and while it is deemed repairable, the church may elect to replace the whole twin furnace/condenser system due to the age of the current system with other failure points looming. Also, the system runs on R-22 refrigerant ("Freon"), which since 2010 is being phased out worldwide due to its negative impact on the earth atmosphere's protective ozone layer making the cooling system difficult to maintain. New A/C systems run on reformulated, environmentally acceptable refrigerants.

Another challenge is that the current refrigerant lines run underground from the basement furnace room to the condenser. This is no longer allowable by building code or by manufacturer's warranty of new equipment.

HALRB APPROVED

COA ISSUED ON May 20, 2026

FIELD CHANGES TO EXTERIOR COMPONENTS OF APPROVED PLANS ARE NOT PERMITTED. FOR INFORMATION CALL 703-228-3549.

EXISTING TOP FLOOR (PRESCHOOL) AHU-5 CONDENSER UNIT

EXISTING BASEMENT (CLASSROOMS) AHU-3 CONDENSER UNIT

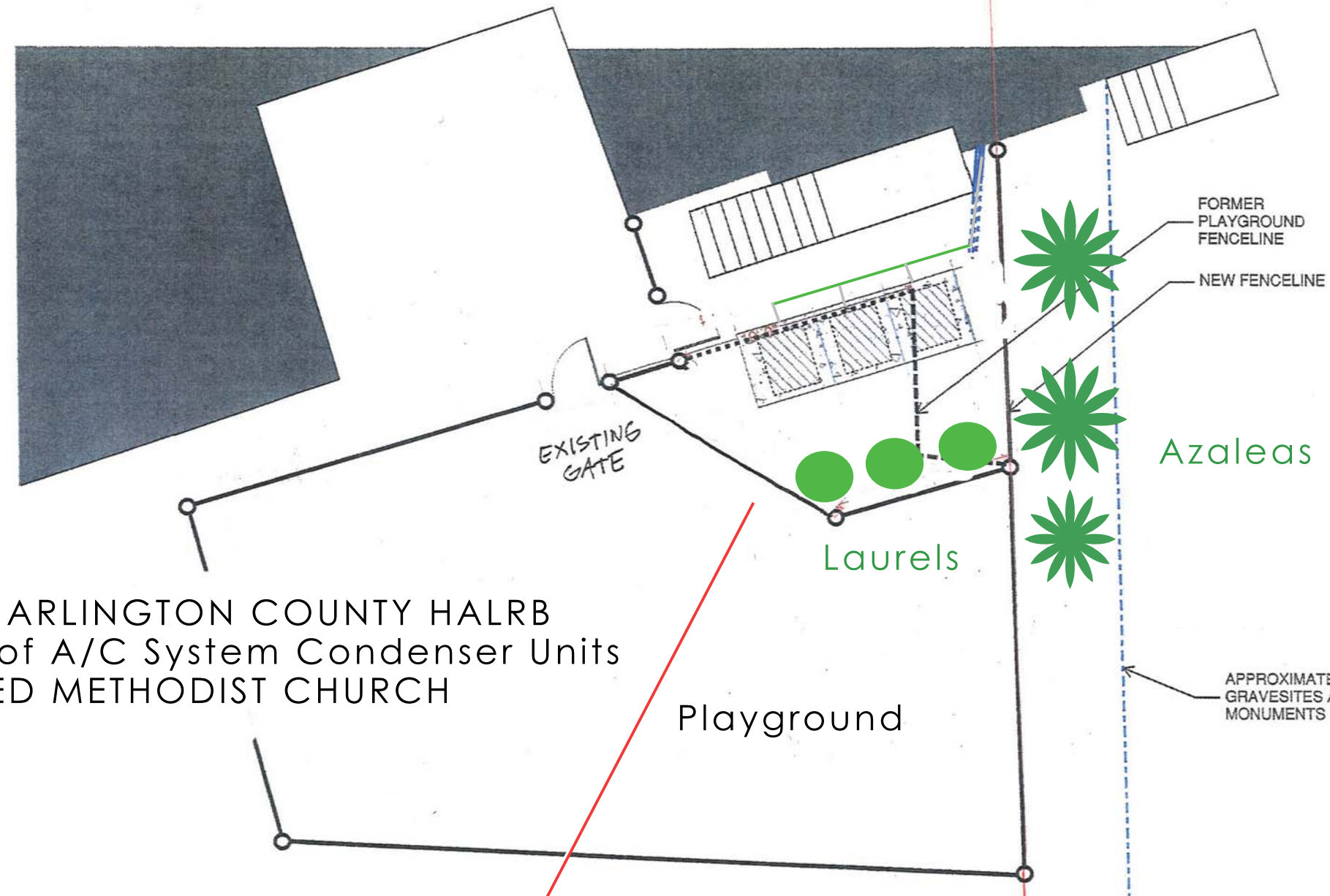
EXISTING MIDDLE FLOOR (CHURCH OFFICE) AHU-4 CONDENSER UNIT

EXISTING PRESCHOOL PLAYGROUND

WALKER CHAPEL HISTORIC CEMETERY



The Plan



PRESENTATION TO THE ARLINGTON COUNTY HALRB
Proposed Relocation of A/C System Condenser Units
WALKER CHAPEL UNITED METHODIST CHURCH
23 APRIL 2026

HALRB APPROVED

COA ISSUED ON May 20, 2026

**FIELD CHANGES TO EXTERIOR
COMPONENTS OF APPROVED PLANS ARE
NOT PERMITTED. FOR INFORMATION CALL
703-228-3549.**

Walker Chapel wishes to create a small fenced utility yard that would allow for all three condenser units to be replaced with new, collocated equipment. This will assure the long term viability of the playground area for future preschool program use and use by parents, caregivers and children in the surrounding community.

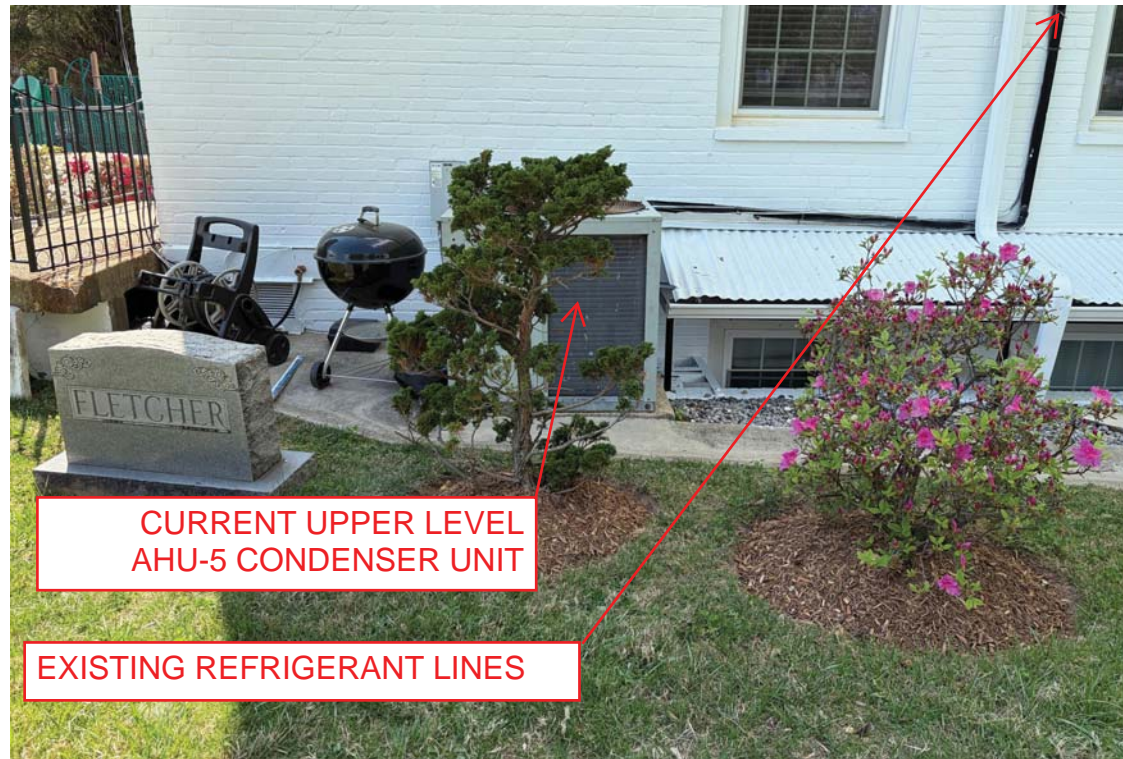
This will permit the refrigerant lines to run above ground and allow us to use the chimney to hide the lines running to the furnaces on the top floor.

The current 6 foot chain link fence very visible in the photo here will be replaced with a 4 foot fence matching the playground thus reducing the visual impact of the HVAC machinery.



PHOTOS OF EXISTING CONDITIONS

VIEW OF CURRENT UPPER LEVEL CONDENSER UNIT



VIEW OF CURRENT MIDDLE AND LOWER LEVEL CONDENSER UNITS



VIEW OF CURRENT MIDDLE AND LOWER LEVEL CONDENSER UNITS FROM ATOP THE PRESCHOOL PLAYGROUND EQUIPMENT

HALRB APPROVED
COA ISSUED ON May 20, 2026

FIELD CHANGES TO EXTERIOR COMPONENTS OF APPROVED PLANS ARE NOT PERMITTED. FOR INFORMATION CALL 703-228-3549.



GENERAL AREA OF
NEW CONDENSERS
AND NEW SCREEN
PLANTING

APPROXIMATE
EDGE OF
GRAVESITES /
LIMIT OF
DISTURBANCE

HALRB APPROVED

COA ISSUED ON May 20, 2026

FIELD CHANGES TO EXTERIOR
COMPONENTS OF APPROVED PLANS ARE
NOT PERMITTED. FOR INFORMATION CALL
703-228-3549.

VIEW OF EXISTING CONDITIONS FROM OLD GLEBE ROAD