

Transportation Roundtable

National Landing BID

September 5, 2024



Crystal City/Pentagon City Area Map

Crystal City - Pentagon City Are...

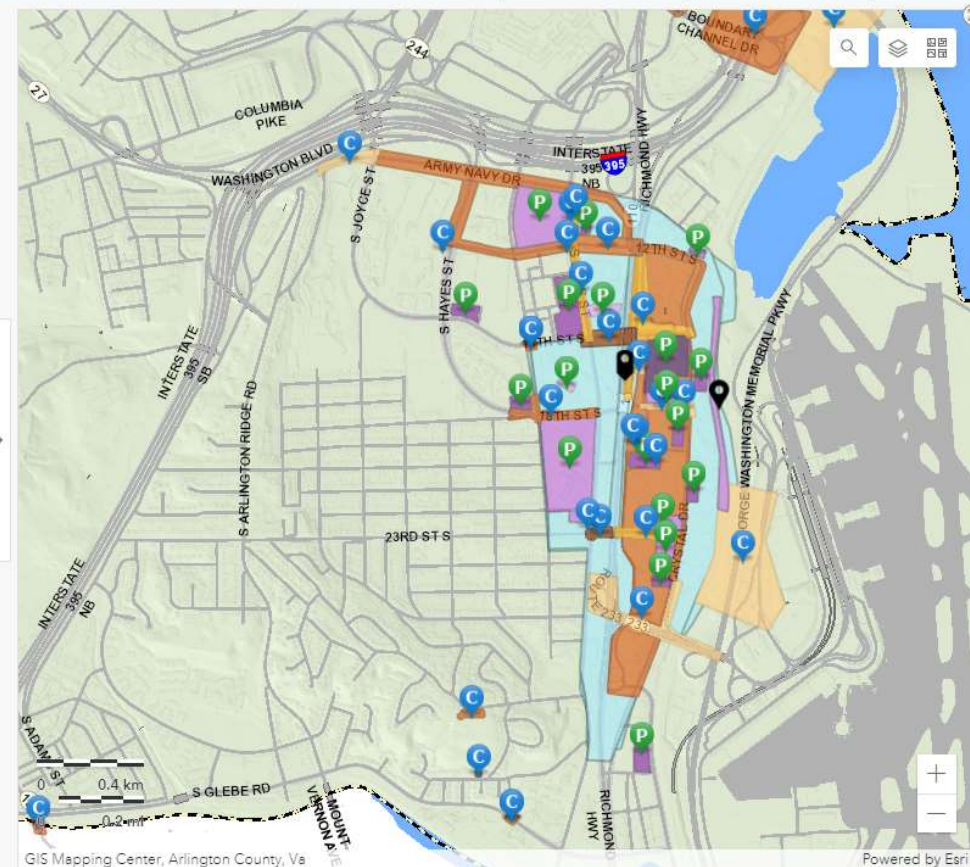
Project Owner
No category sel...

Project Phase
No category sel...

County Point of C...
No category select...

Developer (if appli...
No category selected

Department
No category sel...



Projects (Points)

- C County Project
- P Private Development
- V Virginia Department of Transportation (VDOT)
- V Virginia Railway Express (VRE)
- V Virginia Passenger Rail Authority (VPR)
- D Dominion Energy

Projects (Polygons)

- C County Plan or Comprehensive Study
- C County Project - Planning / Concept (0-30%)
- C County Project - Design (60-100%)
- C County Project - Construction
- C County Project - Completed
- P Private Development - Pending Application
- P Private Development - Site Plan Review
- P Private Development - Design Development
- P Private Development - Construction
- P Private Development - Completed

Legend

Project List

of Projects

To find and use this map:
visit arlingtonva.us and search
"Crystal City at a Glance"

Agenda

- Feature Project: Army Navy Drive and Arlington View Connector
- Upcoming project engagement opportunities
- Ongoing/Upcoming construction activities
- Questions

Featured Projects

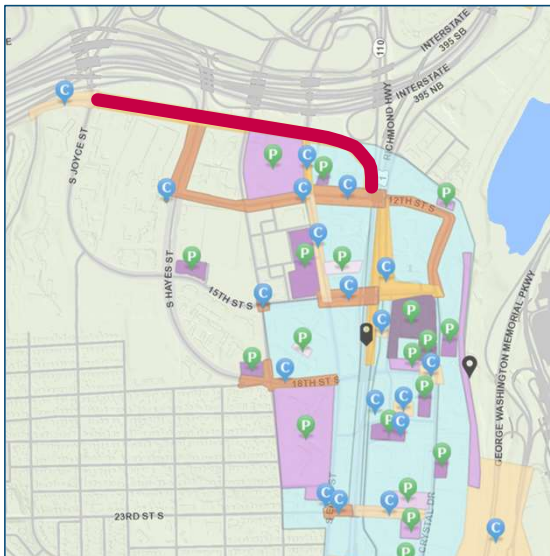
Army Navy Drive and Arlington View Connector





1. Army Navy Drive Complete Street
2. Arlington View Connector
3. Army Navy Drive PBL "Missing Link"
4. "Missing Link" Extension & Realignment

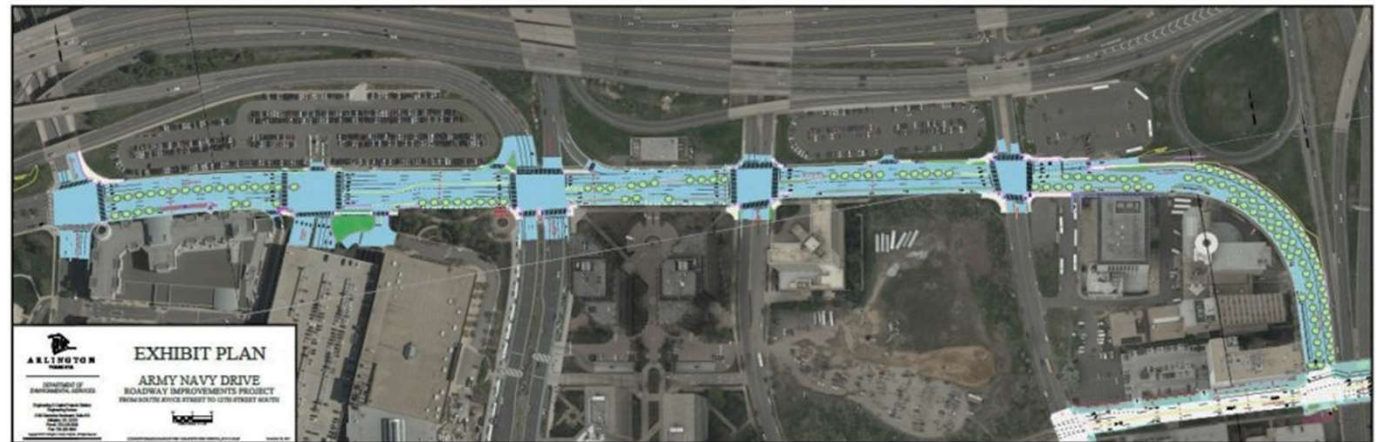
Army Navy Drive Complete Street



More Information: visit arlingtonva.us and search "Army Navy Drive Complete"

KEY UPDATES

- Phase 1 (median demolition, temp paving, markings) **COMPLETED**
- Phase 2A (new sidewalks, curbs, stormwater, signals) **IN PROGRESS**
- Phase 2B (new separated, buffered 2-way bike track) **IN PROGRESS**



Goals & Scope:

- Re-build Army Navy Drive as a Complete Street.
- Improve safe, multimodal connections to and through Pentagon City & Crystal City.
- Integrate with the Transitway Extension to Pentagon City.

Basis:

- MTP Bike Element
- Crystal City Sector Plan & Multimodal Study

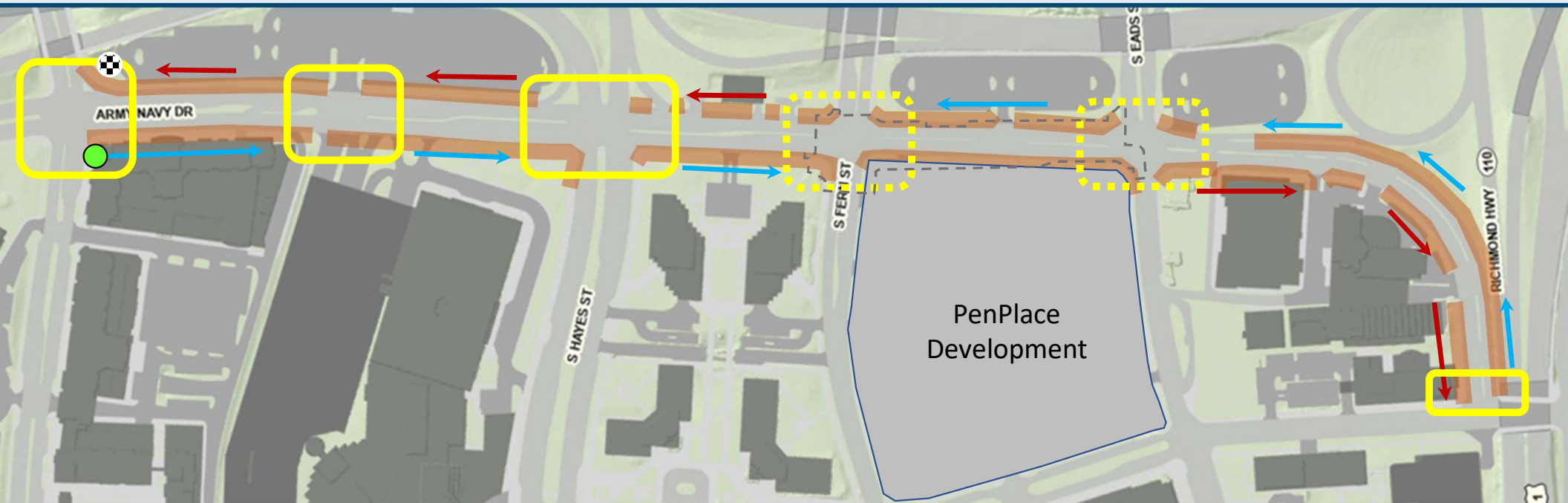
Status:

- In coordination with PenPlace and adjacent County projects
- Construction on track to wrap late fall 2025.

Cost:

- \$14M CIP construction budget
- Federal/regional funding
- County maintained

Army Navy Drive Complete Street







Construction Phase 2A:

- Update of MOT measures: messaging boards, signage, barrels, lane shifts, etc.
- Removal of existing storm structures
- Demolition of existing curbs and sidewalks
- Conduit work for new streetlight & signal improvements
- Installation of new curbs and sidewalks

Status:

Estimated Milestones

- Joyce-Fern (South side): **Summer 2024** 
- Eads-12th St. (South side): **Late Fall 2024** 
- 12th St.-Fern (North side): **Spring 2025** 
- Fern-Joyce (North side): **Spring 2025** 

Army Navy Drive Complete Street



Construction Phase 2B:

- Update of MOT measures: messaging boards, temporary striping, barrels, lane shifts, etc.
- Installation of new storm structures and two-way, protected bicycle track

Status:

Estimated Milestones

- Joyce-Fern (South side): **Late Fall 2024**
- Eads-12th St. (South side): **Spring 2025**



Army Navy Drive Complete Street



Construction Phase 3:

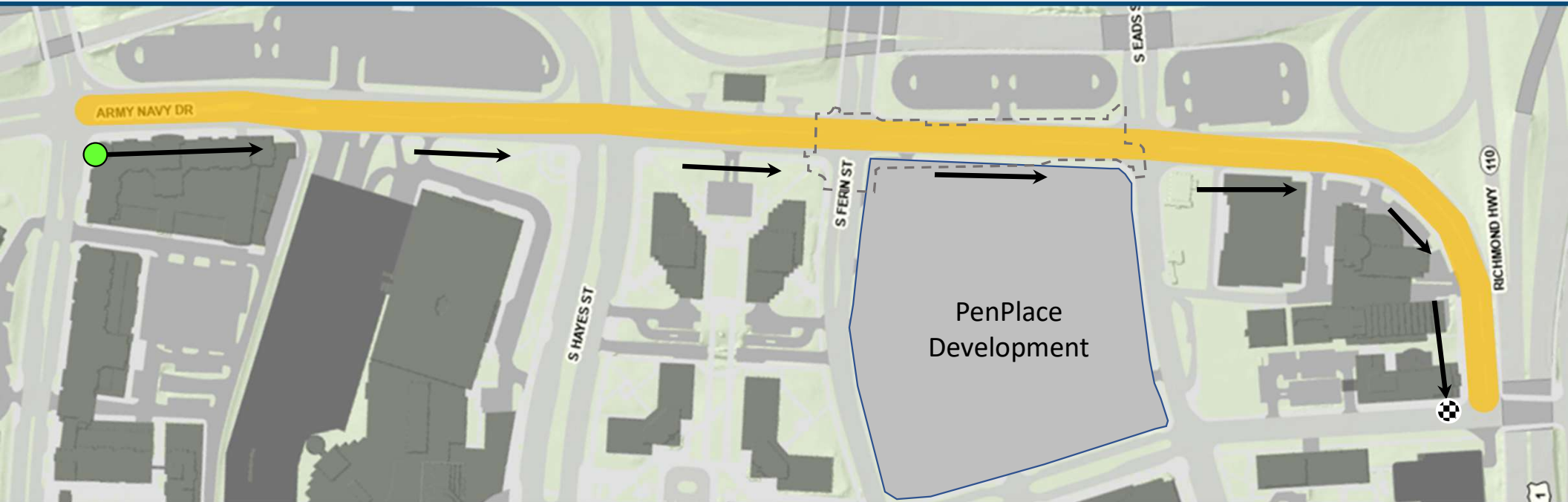
- Update of MOT measures: messaging boards, temporary striping, barrels, lane shifts, etc.
- Installation of new streetlights, storm structures, and center medians

Status:

Estimated Milestones

- Joyce-12th St. : **Summer 2025**

Army Navy Drive Complete Street



Construction Phase 4:

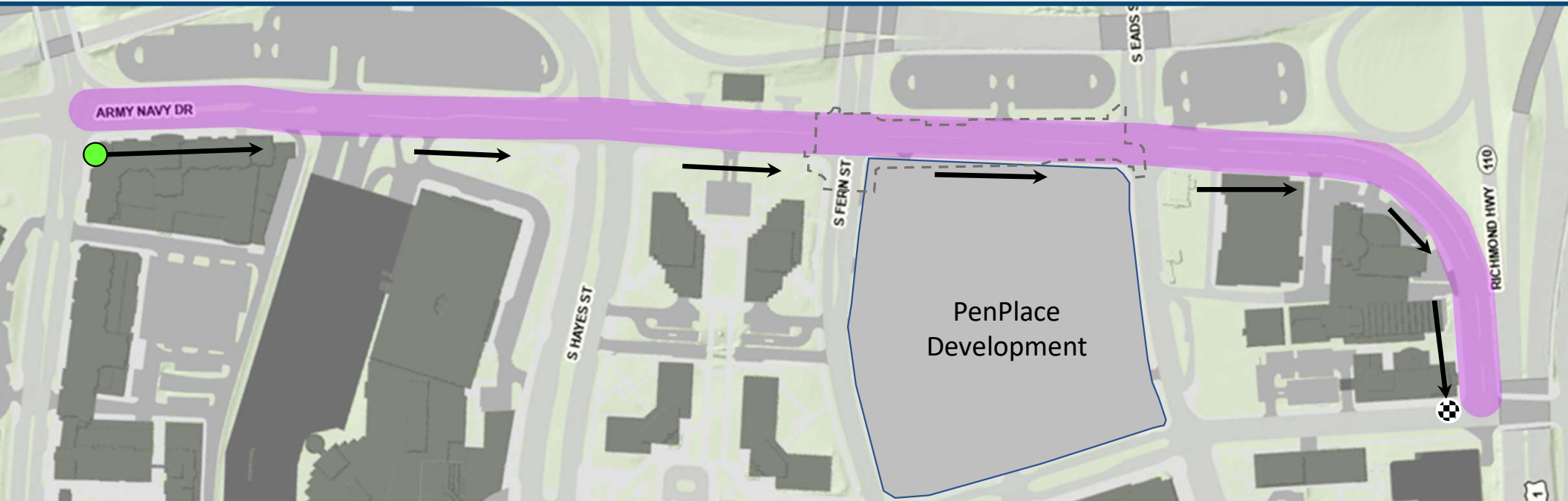
- Update of MOT measures: messaging boards, traffic detours, etc.
- Milling and overlay, with some areas of full-depth asphalt, for entire new road surface

Status:

Estimated Milestones

- Joyce-12th St. : **Summer-Fall 2025**

Army Navy Drive Complete Street



Construction Phase 5:

- Maintenance of Phase 4 MOT measures: messaging boards, lane-shifts, etc.
- New striping, markings, signage, and street trees.

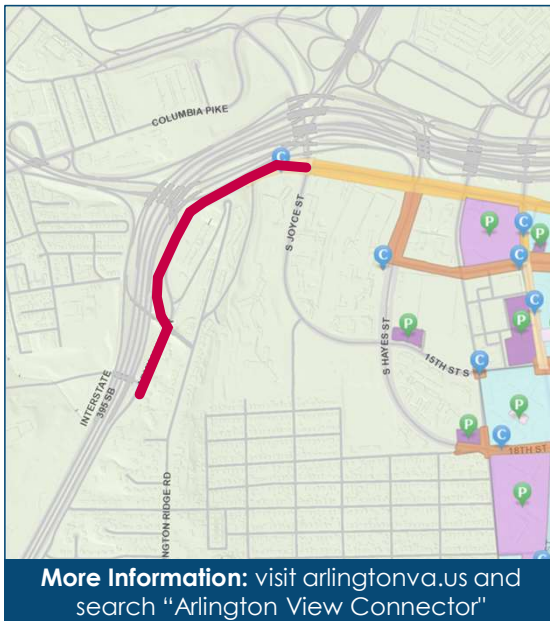
Status:

Estimated Milestones

- Joyce-12th St. : Fall 2025

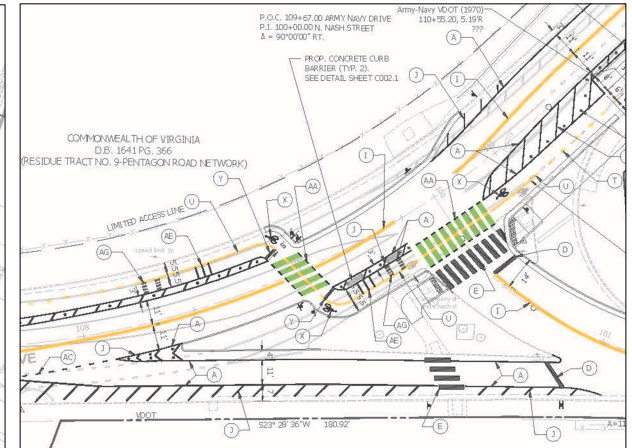
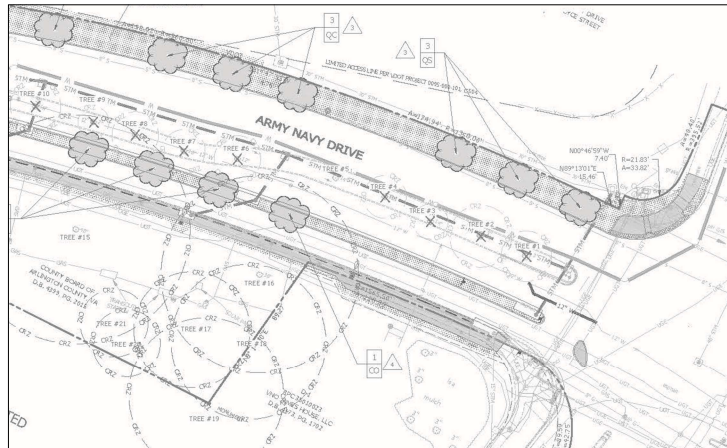
Project Closeout : Anticipated late Fall 2025

Army Navy Drive “Missing Link” PBL



KEY UPDATES

- 100% Final Engineering Design **COMPLETED**
- Cross-project coordination & design integration **IN PROGRESS**
- Permitting, final VDOT Review, and preparation of Bid Documents **IN PROGRESS**



Goals & Scope:

- Re-builds Army Navy Drive west of Joyce as an integrated extension of the Complete Street project.
- Improves multimodal connections into Pentagon City.
- Combines transit upgrades with realigned 2-way bike track

Basis:

- MTP Bike Element
- Pentagon City Sector Plan

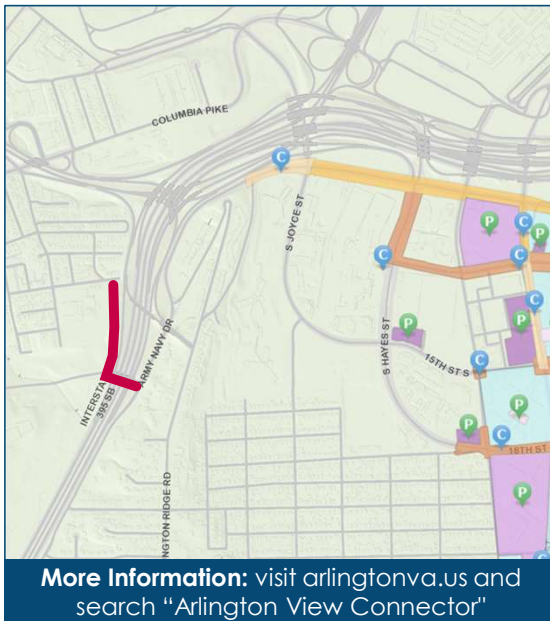
Status:

- Anticipated out to bid by fall-winter 2024
- Construction slated for summer 2025

Cost:

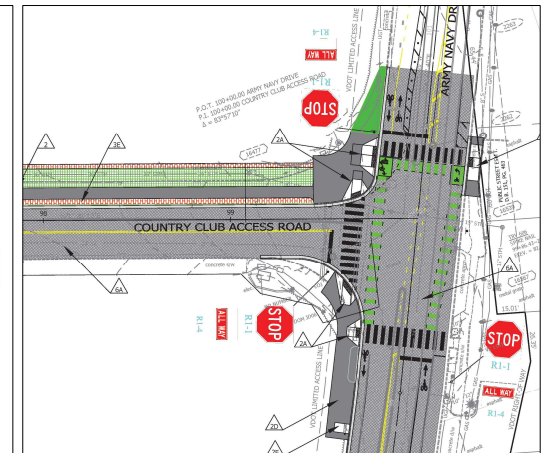
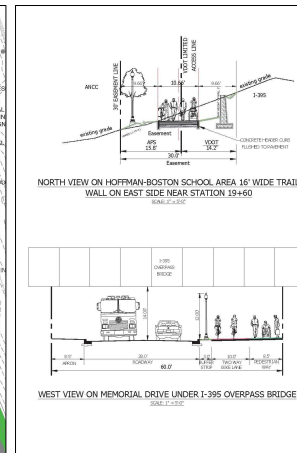
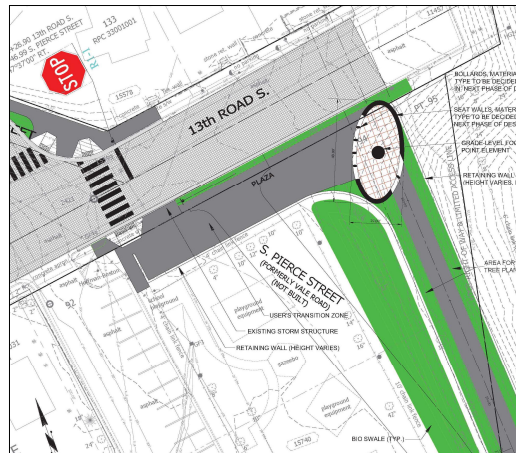
- \$5M CIP budget
- Local funding
- County maintained

Arlington View Connector



KEY UPDATES

- 30% Preliminary Design **COMPLETED**
- 60% Design Development with on-call consultant team **IN PROGRESS**
- Interagency coordination on BMP design and construction easements **IN PROGRESS**



Goals & Scope:

- Creates a multi-use connection alongside and under I-395
- Improves equity of access and connectivity with Army Navy Drive and adjacent, historically disconnected neighborhoods

Basis:

- MTP Bike Element
- Supports goals of Pentagon City Sector Plan

Status:

- Anticipated out to bid by mid-2025
- Construction slated for spring 2026

Cost:

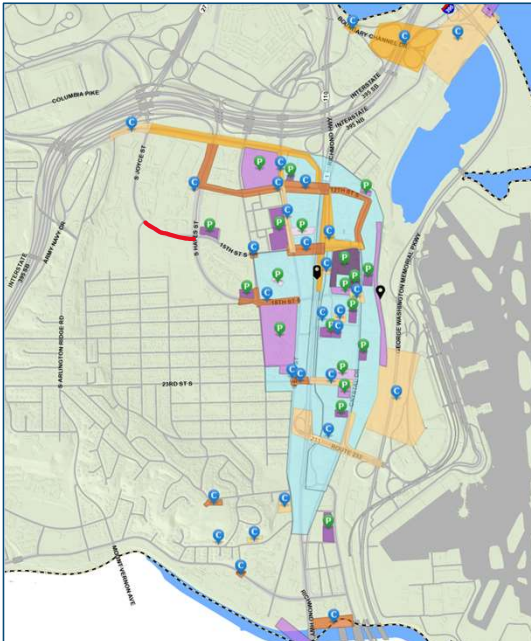
- \$10M CIP budget
- Local funding
- County maintained

Current Transportation Projects in Design/Upcoming Engagement Opportunities



15th Street S. Complete Street (S. Joyce St. to S. Hayes St.)

PROJECT PROGRESS UPDATE



More Information: visit arlingtonva.us and search "15th Street Joyce Fern"

KEY UPDATES

- Coordination with TE&O & WSS
- Coordination with TE&O for signal upgrade at garage entrance
- 90% resubmission underway
- Signal upgrade plans under separate review



Goals & Scope:

Increase visibility and protection for vulnerable road users and enhance access for people with disabilities in the public right-of-way. Upgrade intersection safety improvements to comply with ADA.

Basis:

MTP Bike Element
Pentagon City Sector Plan
Vision Zero Action Plan

Status:

90% design under review.

Cost:

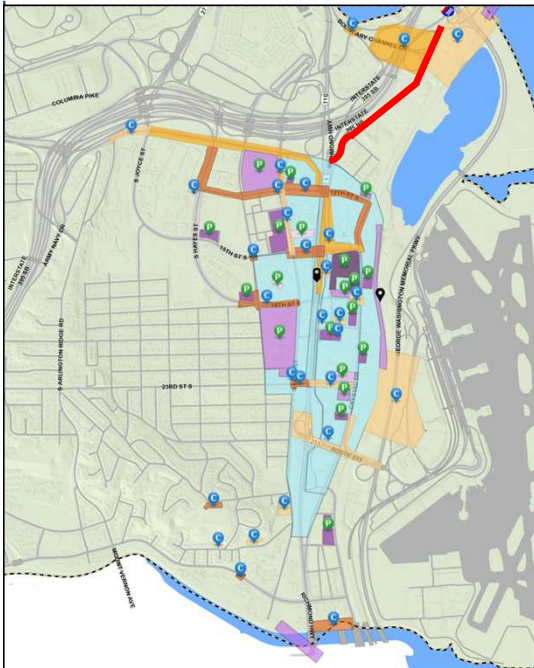
\$600k
Local Funds
County-maintained

Long Bridge Drive Multimodal Connection

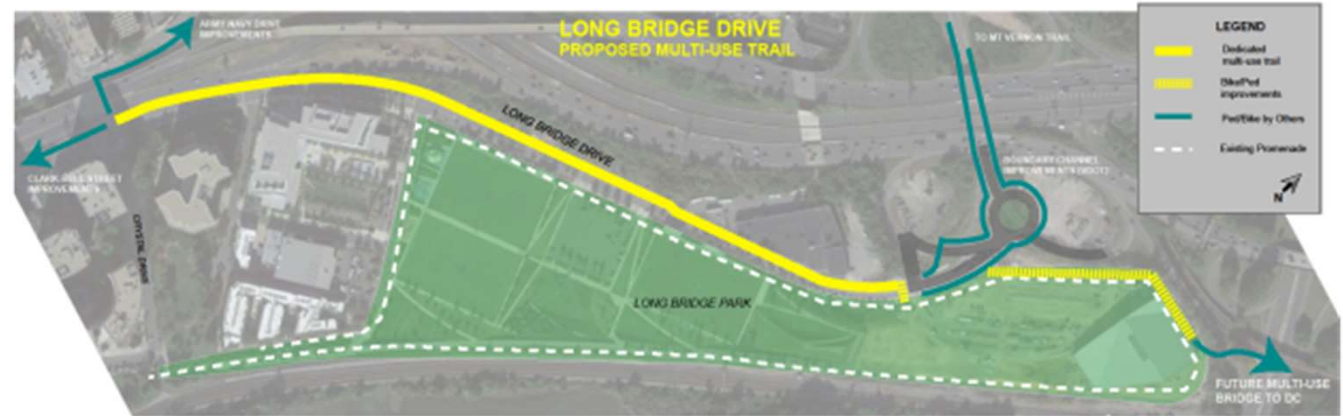
PROJECT PROGRESS UPDATE

KEY UPDATES

- Conceptual Design development ongoing
- Fall 2024 – Public Engagement on conceptual design scheduled for Thursday, September 26 at Long Bridge Aquatics Center.



More Information: visit arlingtonva.us and search "Long Bridge Drive Multimodal Connection"



Goals & Scope:

Create an enhanced ped/bike facility along Long Bridge Drive connecting the ped/bike terminus of the future Long Bridge Rail Project, as it lands behind the Long Bridge Aquatic Center, to the Crystal City bike network.

Basis:

Master Transportation Plan

Status:

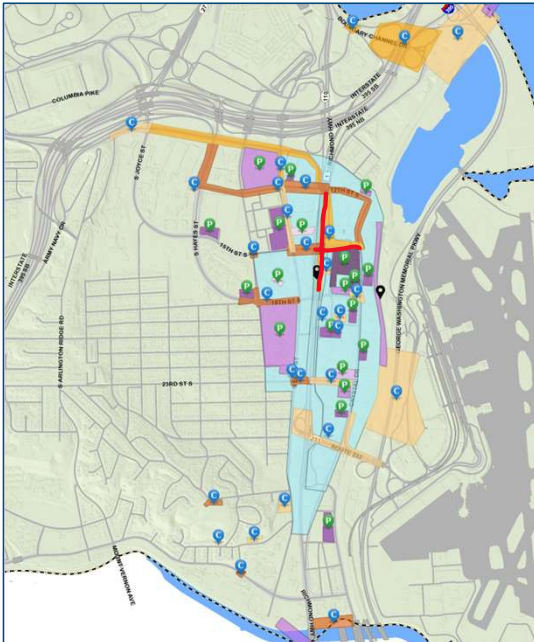
Conceptual design

Cost:

\$7.8M
Locally Funded
County Maintained

15th St. South/S. Clark-Bell Street Realignment

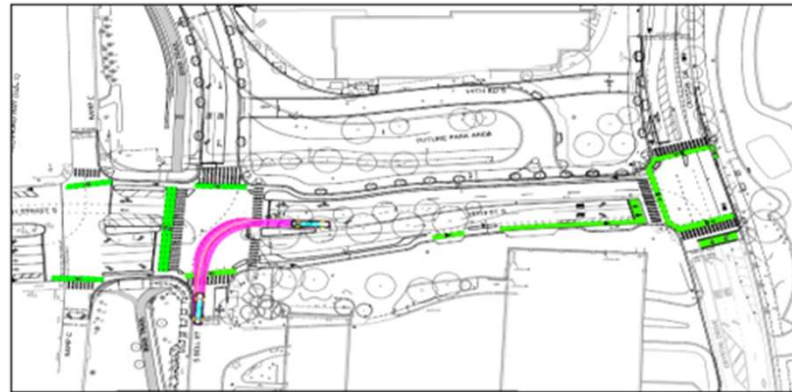
PROJECT PROGRESS UPDATE



More Information: visit arlingtonva.us and search "Clark Bell Realignment"

KEY UPDATES

- Waiting on LDA final signatures and VDOT permit approval
- Public engagement: Communicate updates in advance of contract approval
- Next milestone: Construction contract award – winter 2024/2025



Goals & Scope:

Realign 15th Street S and improve streetscape and bicycle facilities on 15th Street S.
Construct multi-use trail west of Clark-Bell from 12th Street S to 18th Street S / Metro Plaza

Basis:

Crystal City Sector Plan

Status:

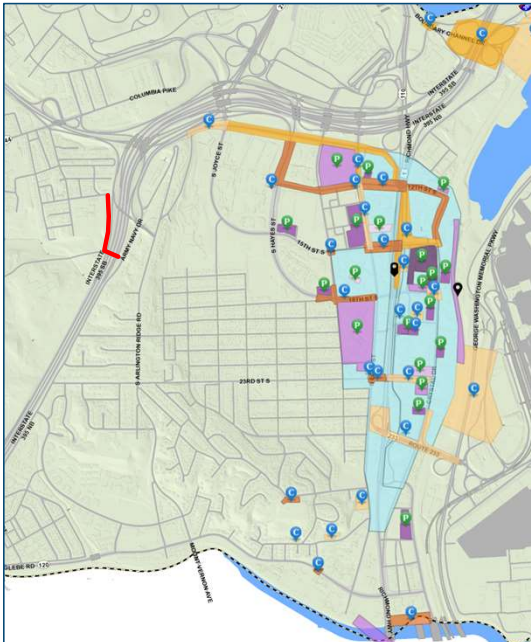
Waiting to submit 100% plans for signature

Cost:

\$12M
Local, regional funding
County maintained

ANCC Trail Connector (Arlington View Trail Connector)

PROJECT PROGRESS UPDATE



More Information: visit arlingtonva.us and search "ANCC Trail Connector"

KEY UPDATES

- In design development now through June 2025
- Construction could begin as early as winter 2025



Goals & Scope:

- Constructs a multi-use connection in an easement alongside and beneath the I-395 overpass adjacent to Army Navy Country Club
- Establish equity of access and connectivity between historically disconnected Arlington View and Arlington Ridge neighborhoods, Pentagon City/Crystal City districts.

Basis:

- MTP Bike Element
- Supports goals of Pentagon City Sector Plan

Status:

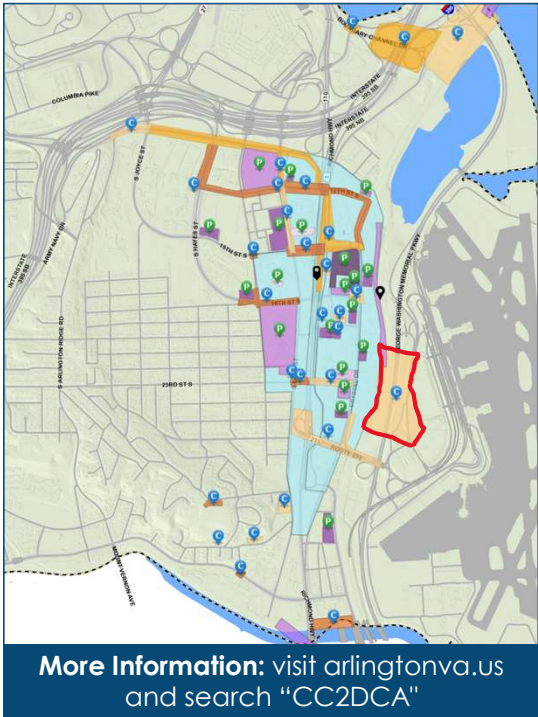
- Final design through 2024

Cost:

- \$5M-\$10M, pending final design
- Locally funded
- County maintained

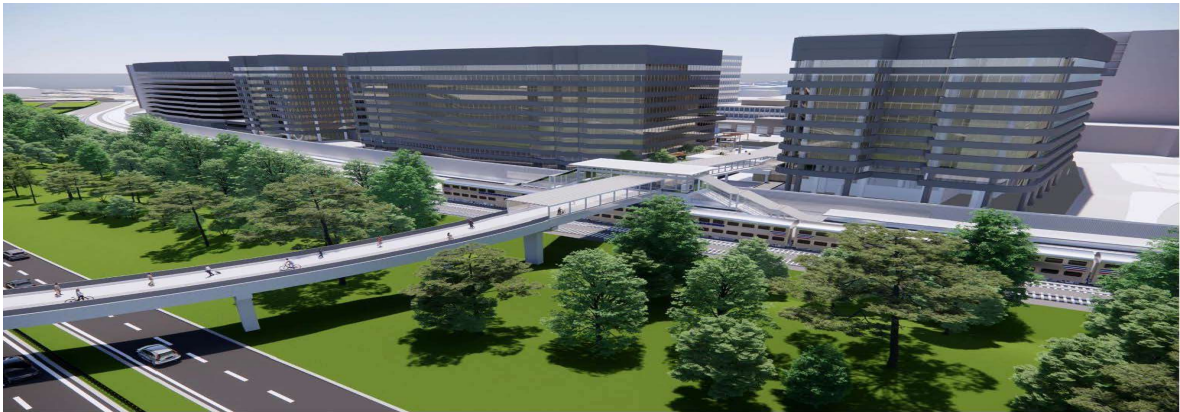
Crystal City to DCA Multimodal Connection (CC2DCA)

PROJECT PROGRESS UPDATE



KEY UPDATES

- NEPA process completed June 2024
- Preliminary Engineering and Design ongoing with 15% Design submittal anticipated in late 2024
- Coordination with project stakeholders (MWAA, VRE, CSX, etc.) ongoing.
- Public Engagement anticipated late 2024/early 2025.



* Rendering of preferred alternative spanning rail corridor. Located near 2011 Crystal Drive

Goals & Scope:



Construct a multimodal connection between Crystal City and DCA

Basis:



Crystal City Sector Plan

Status:



NEPA Phase Completed
Preliminary Engineering ongoing.

Cost:



JG1

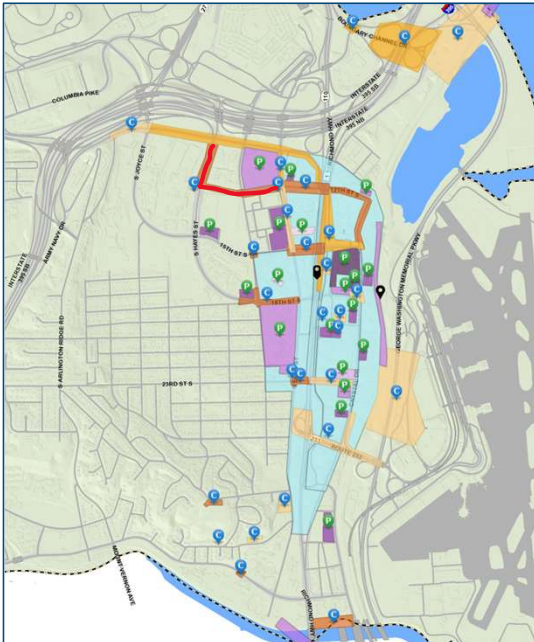
\$57M +
Local, State, Federal
funding
County maintained

Transitway Extension to Pentagon City (Segment 2A/2B)

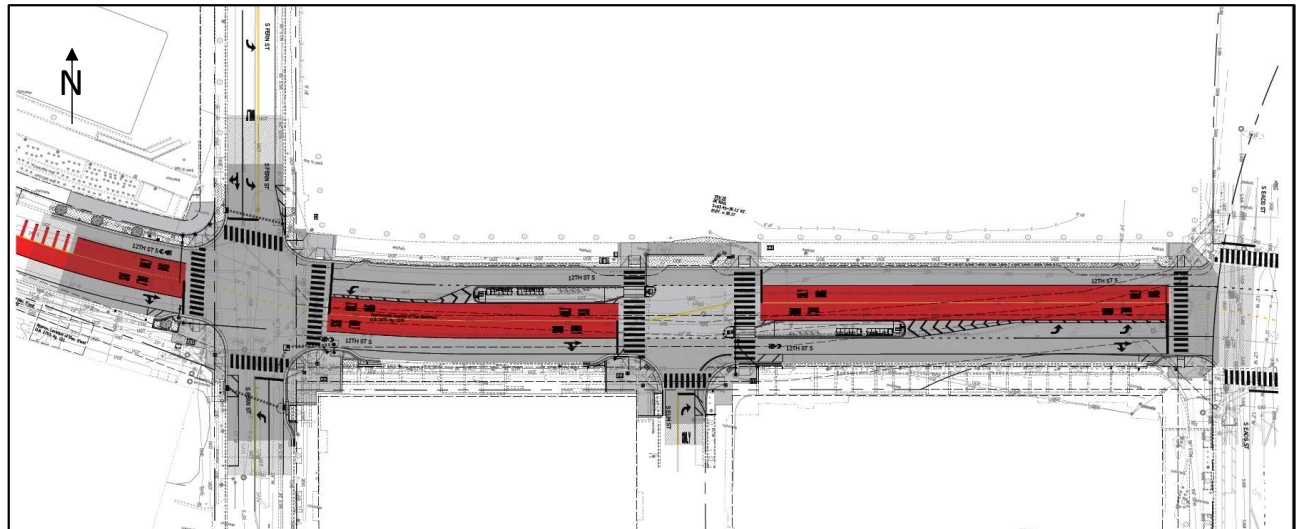
PROJECT PROGRESS UPDATE

KEY UPDATES:

- Segment 2A:
 - Design Phase: Complete
 - Procurement Phase: Invitation to Bid (ITB) advertised on 8/29/24
 - Construction Phase: Anticipated start construction Jan-Feb 2025



More Information: visit arlingtonva.us and search "Transitway Extension"



Goals & Scope:

Deliver a northern extension of the existing Crystal City Potomac Yard (CCPY) Transitway. Provide transit connectivity, high-quality stations and service to a dense area of the County.

Basis:

Crystal City Sector Plan

Status:

Segment 2A – ITB advertised. Bids due 9/27/24
Segment 2B – Conceptual design

Cost:

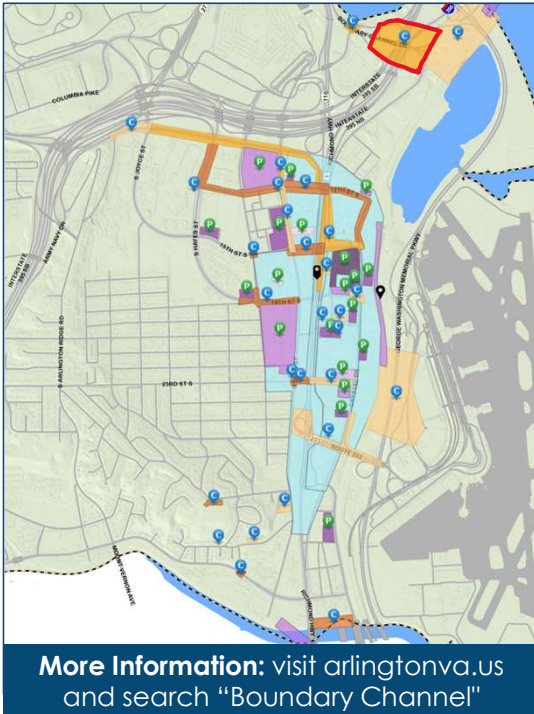
\$27M
Local, State, Regional funds
WMATA Operated

Ongoing/upcoming public transportation construction activities



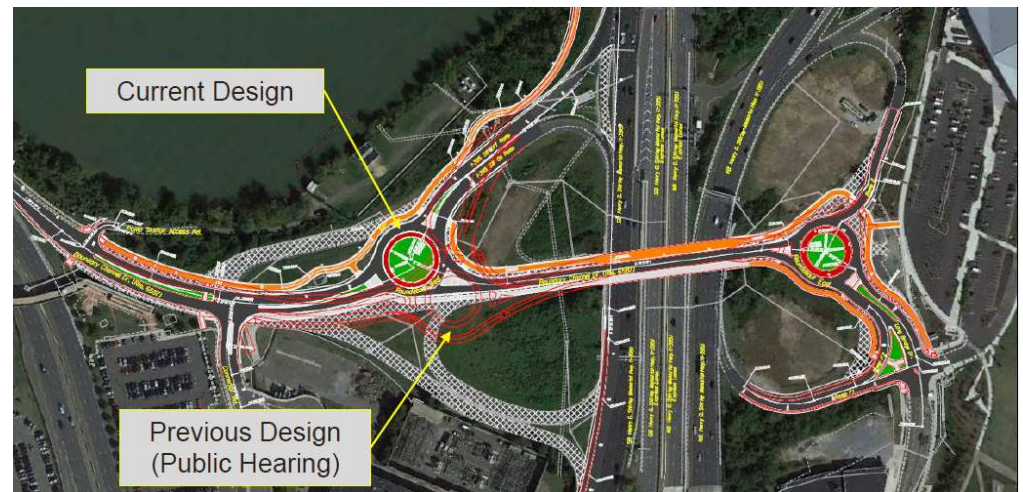
Boundary Channel Drive Interchange

COUNTY CONSTRUCTION UPDATE



UPDATES

- Construction complete
- Working on potential improvements to intersection with Aquatic Center
- Closing out project with VDOT



Goals & Scope:

Reconfigure Boundary Channel Drive interchange to include roundabouts on either side of I-395 and bicycle/pedestrian improvements

Basis:

14th Street Bridge EIS
MTP Bike Element

Status:

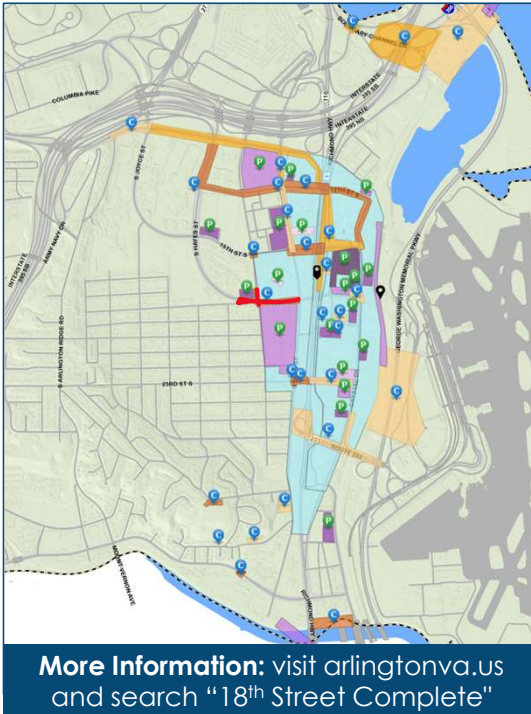
Construction complete

Cost:

\$20.4 M
State, Regional, Local
funding

18th St. South Complete Street – Eads to Fern

COUNTY CONSTRUCTION UPDATE



UPDATES

- Contractor working on remainder of punch list items.



Goals & Scope:

Improve bicycle facilities and streetscape on 18th St S between S Fern-S Eads St
Realign intersection of S Fern St and 18th St S

Basis:

Crystal City Sector Plan
MTP Bike Element

Status:

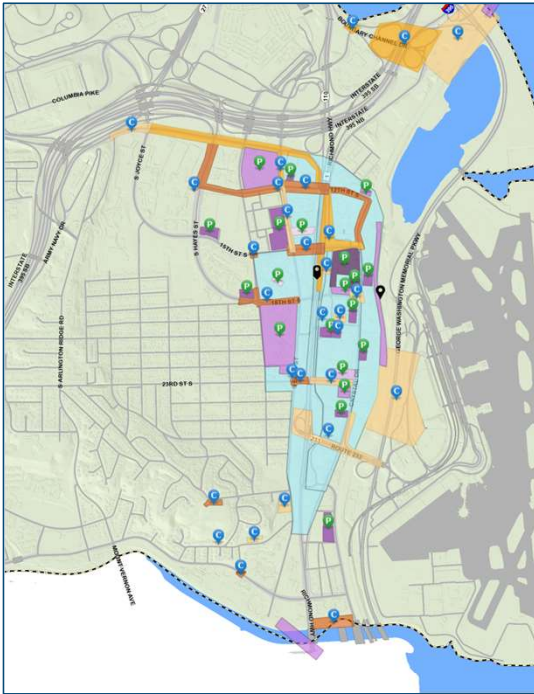
Construction
completion anticipated
Spring 2024

Cost:

\$3.8M
Local funding
County maintained

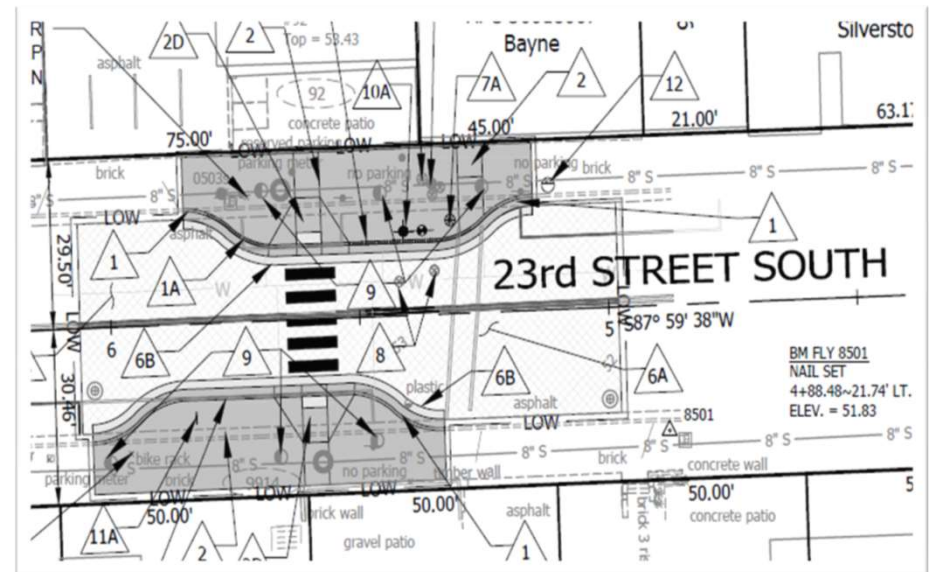
23rd Mid-Block Crossing b/w S Fern and Eads St

PROJECT PROGRESS UPDATE



KEY UPDATE

- ITB September 2024
- Construction anticipated Nov/Dec 2024



Goals & Scope:

The project provides a pedestrian crossing by adding curb extensions and installing roadway markings and signage. The curb extension reduces the distance for people walking, encourages safer vehicle speeds, and increases user visibility for people walking, biking and driving. View the plan: [23rd-St-S-Midblock.png](#)

Basis:

The project will be constructed during the nighttime hours of 11:00 pm to 7:00 am.

Status:

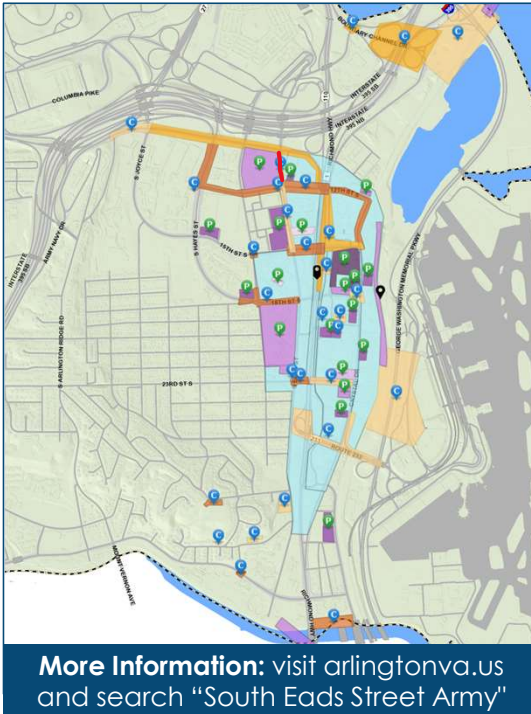
ITB Scheduled for
September 2024

Cost:

Estimated cost
100K

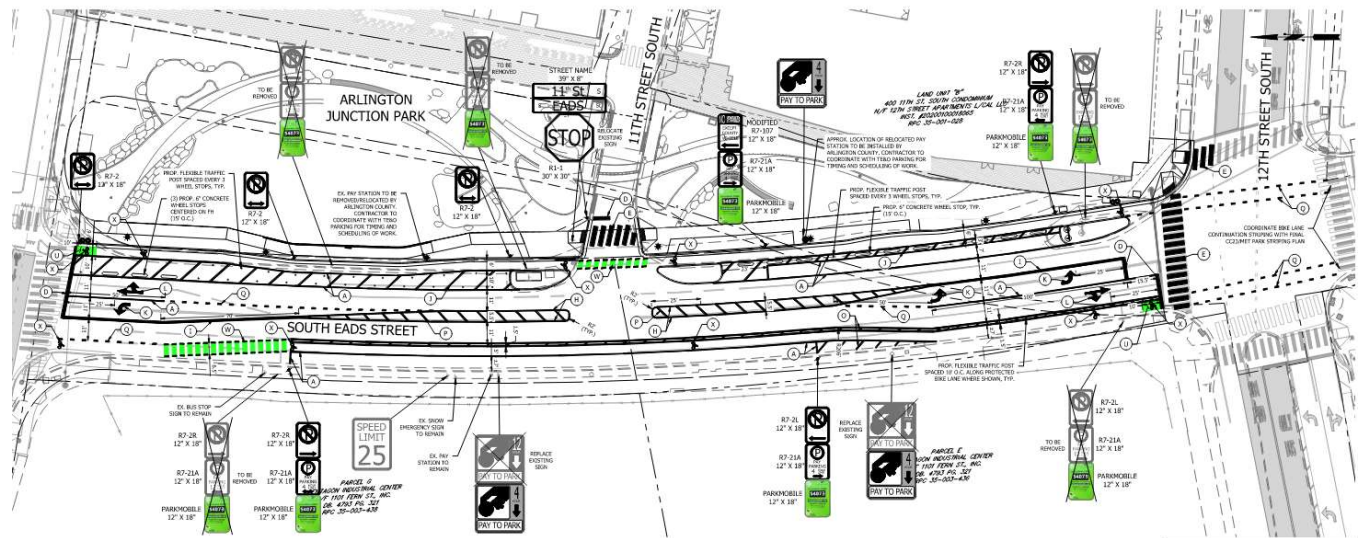
S. Eads St. Complete Street – Phase 1 (Army Navy Dr-12th St. S.)

PROJECT PROGRESS UPDATE



KEY UPDATES

- Officially under construction, however, streetscape will likely be constructed next summer once park project begins wrapping up.



Goals & Scope:

Improve streetscape and bicycle facilities on the east side of South Eads Street adjacent to the New Park at South Eads Street and Army Navy Drive

Basis:

Crystal City Sector Plan
MTP Bike Element

Status:

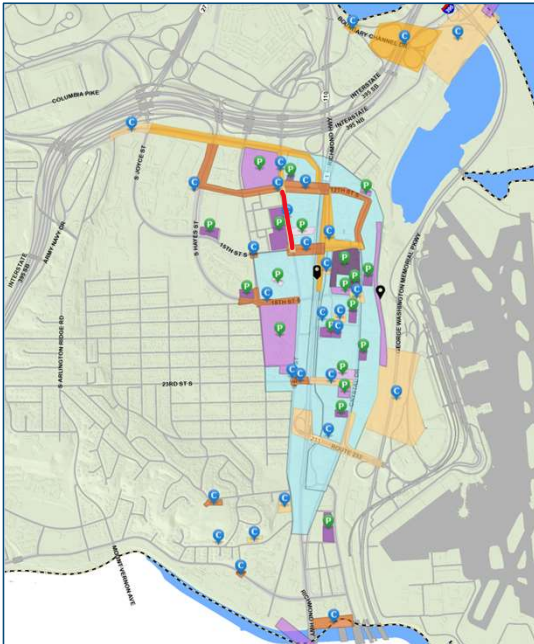
Construction started
summer 2024

Cost:

\$1.7M
Local funding
County maintained

S. Eads St. Complete Street – Phase 2 (12th St. S.-15th St. S.)

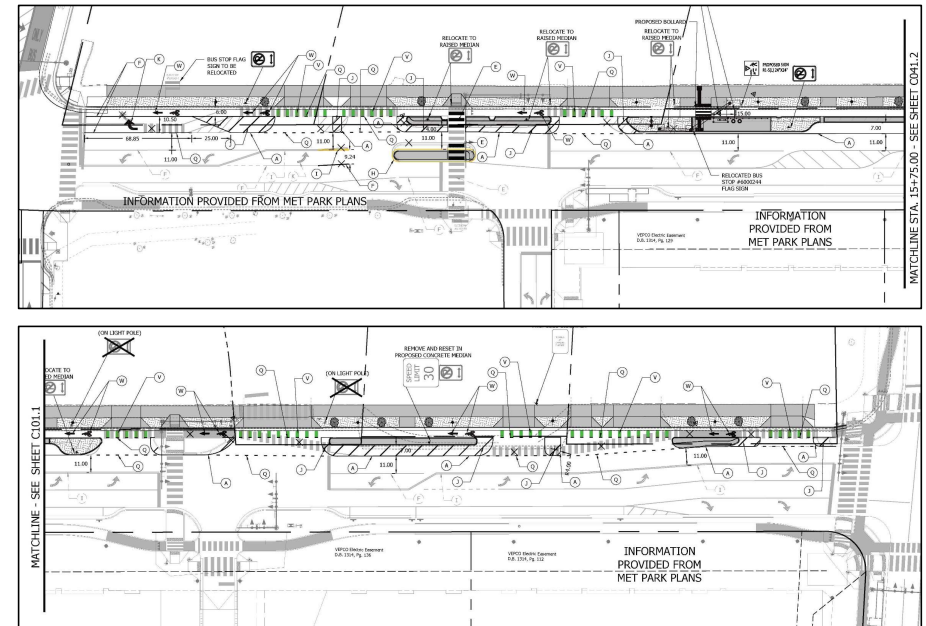
PROJECT PROGRESS UPDATE



More Information: visit arlingtonva.us and search "South Eads Street 12th"

KEY UPDATES

- County Board awarded contract awarded in April
- Construction begins Summer 2024
- Anticipate completion in Fall 2025



Goals & Scope:

- Improve sidewalk zone and integrate a protected bike lane on the east side of S. Eads St.

Basis:

- Crystal City Sector Plan
- MTP Bike Element

Status:

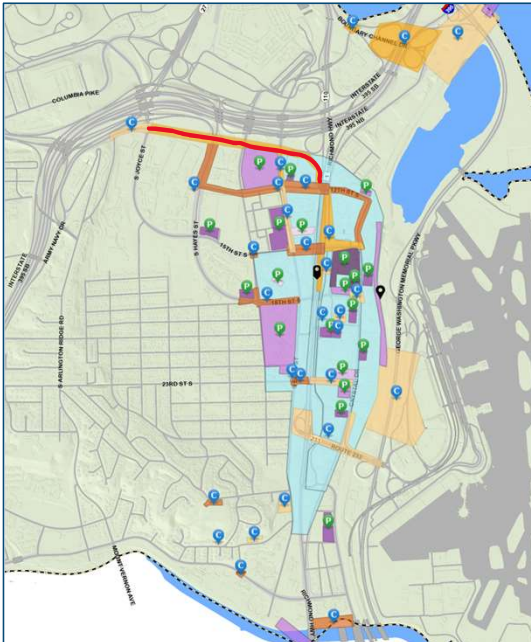
- Construction started Summer 2024

Cost:

- \$5M Budget
- Locally funded
- County maintained

Army Navy Drive Complete Street

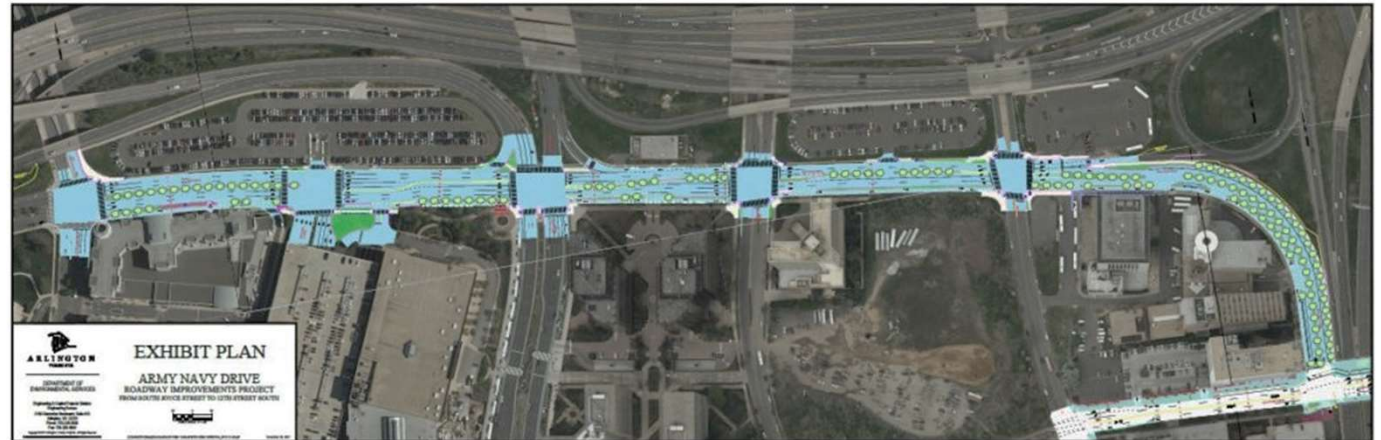
COUNTY CONSTRUCTION UPDATE



More Information: visit arlingtonva.us and search "Army Navy Complete"

UPDATES

- MOT and construction Phases 2A (storm drainage, sidewalks, curb & gutter, streetlights) and 2B (two-way protected bike lanes) continuing through fall 2024.
- Construction anticipated to extend into late fall 2025



Goals & Scope:

- Re-build Army Navy Drive as a multimodal Complete Street.
- Improve connections to commercial, residential and retail services in Pentagon City & Crystal City.

Basis:

- MTP Bike Element
- Pentagon City Sector Plan
- Crystal City Sector Plan & Multimodal Study

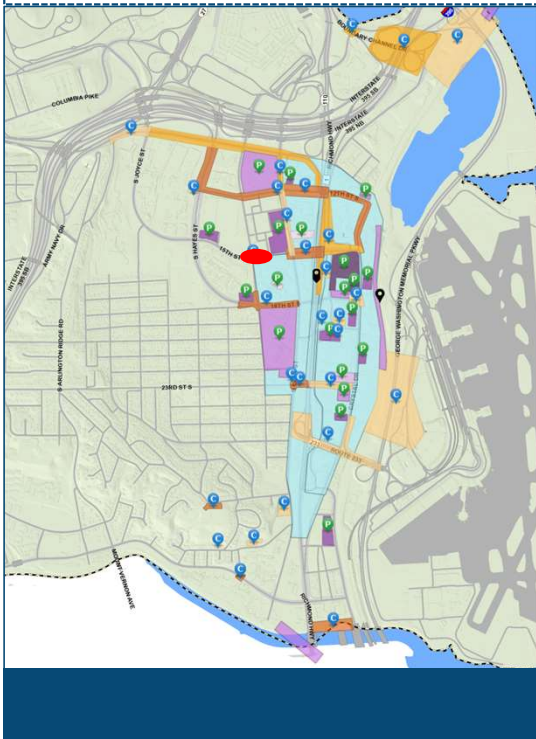
Status:

- Construction through Spring 2025

Cost:

- \$14M CIP budget
- Federal, regional funding
- County maintained

15th and Fern Improvements



UPDATES

- Improvements completed
- TE&O working on markings for bike lanes

COUNTY CONSTRUCTION UPDATE



Goals & Scope:

Project consists of constructing pedestrian safety improvements at the intersection of 15th Street S and S Fern Street. Construction includes installation of new curb extensions, sidewalks, crosswalks and upgrading traffic signals

Basis:

Crystal City Sector Plan
Traffic Signal Upgrades
Program

Status:

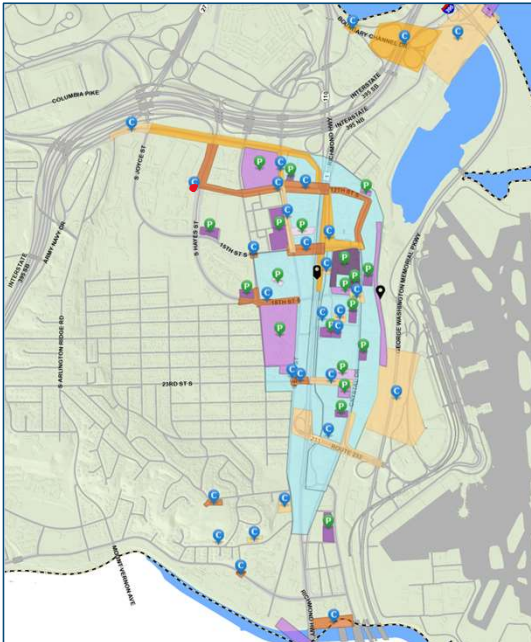
Construction completed

Cost:

\$697,000
Federal, State, and Local
funding

Pentagon City Metro Station 2nd Elevator

COUNTY CONSTRUCTION UPDATE



More Information: visit arlingtonva.us and search "Pentagon City Elevator"

UPDATES

- Work nearing completion
- System integration underway
- HVAC system testing scheduled for September
- Commissioning/testing scheduled for September
- Final elevator inspection scheduled for September 2024
- Substantial Completion fall 2024
- Final Completion fall 2024



Applying caulk to glass at elevator headhouse

Goals & Scope:

Improve accessibility to the Pentagon City Metrorail Station for customers accessing the station from the west by building an elevator on the west side of S. Hayes Street.

Basis:

Crystal City Sector Plan

Status:

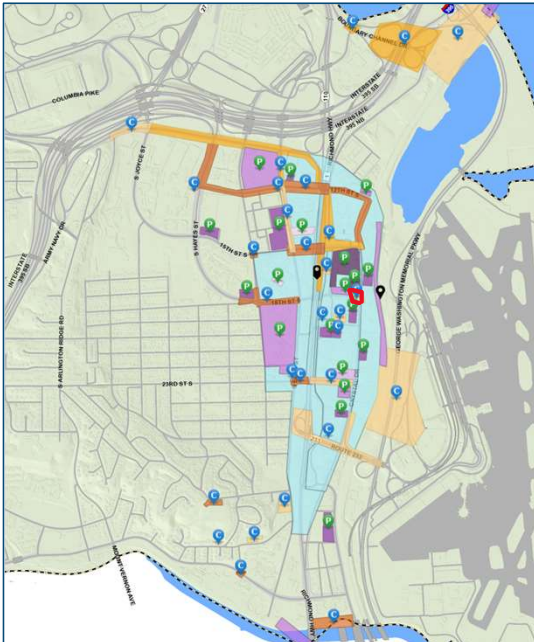
In construction

Cost:

\$17.3M
Federal, State, and Local
funding
WMATA maintained

Crystal City Metro Station East Entrance

PROJECT PROGRESS UPDATE



More Information: visit arlingtonva.us and search "Crystal City Entrance"

KEY UPDATES

- Final Design approaching 100% (complete Feb. 2025)
- MOT and construction fencing established; grubbing, grading, and utility relocation completed; excavation and sheeting and shoring to begin Fall 2024
- Groundbreaking Ceremony held July 12, 2024
- Station entrance opening in 2027
- Close coordination with WMATA throughout Design and Construction to meet requirements and minimize impacts

Groundbreaking Ceremony July 12, 2024



Rendering of Entrance Pavilion



Construction Site - Sept. 3, 2024



Goals & Scope:

Construct a second entrance to the Crystal City Metrorail station to better facilitate multimodal connections

Basis:

Crystal City Sector Plan, Crystal City Station Access and Second Entrance Feasibility Studies

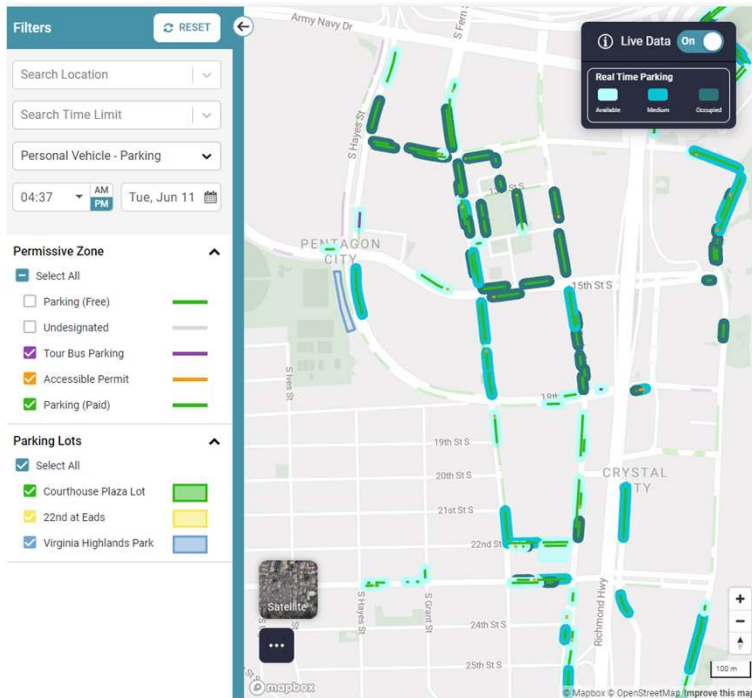
Status:

Final Design (Aug 2023 – Feb 2025)
Construction Aug 2024 – Mar 2027

Cost:

\$146.1M
Local, State, Federal funding
WMATA maintained

Performance Parking Pilot



UPDATES:

- February 24 County Board adopted temporary ordinance enabling administrative price changes
- March 18 first quarterly price change went into effect in Rosslyn-Ballston Corridor, impacting ~12% of project area spaces
- Space availability and price visible in multiple apps/mobile websites
- End May/Beginning June, sensor installs filled gaps in Rt. 1 corridor
- Second quarterly price change occurred June 24, which included parts of Rt. 1 corridor
- \$0.50 price increase at approximately 22% of metered parking spaces in the project area, and a \$0.25 price decrease at approximately 15% of spaces

COUNTY PROJECT UPDATE

Want to Find Parking?

Parking spaces in the Metro corridors are now equipped with **sensors**!

There are **new tools** to help you **plan ahead and find parking**.

Learn more by scanning the code, or visit www.arlingtonva.us and search "Performance Parking"



Goals & Scope:

Determining if varying meter rates and hours to manage parking demand is right for Arlington's high-demand commercial and multifamily corridors. Test out utility of real-time availability and price information for parker trip planning and improved business/community access.

Basis:

MTP – Parking Element

Status:

System operations; public data tools available; second price change coming up soon

Cost:

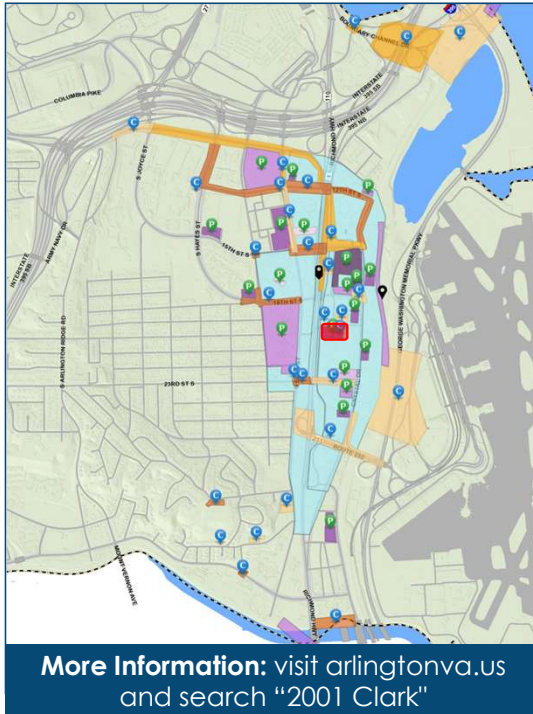
Up to \$5.4M
State Funding,
County implemented

Ongoing/upcoming private development construction activities



2001 S. Clark Street (Crystal Plaza 1) – SP #458

PRIVATE PROJECT UPDATE



UPDATES

- S. Clark Street –travel lane closure, pedestrian and bicycle detour available
- 20th St S– varied travel patterns based on construction work zones



Goals & Scope:

758 residential units & 22k SF retail in 2 towers
Adjacent street and streetscape improvements
Realignment of S. Clark Street

Basis:

Crystal City Sector Plan
County Board approval
May 15, 2021

Status:

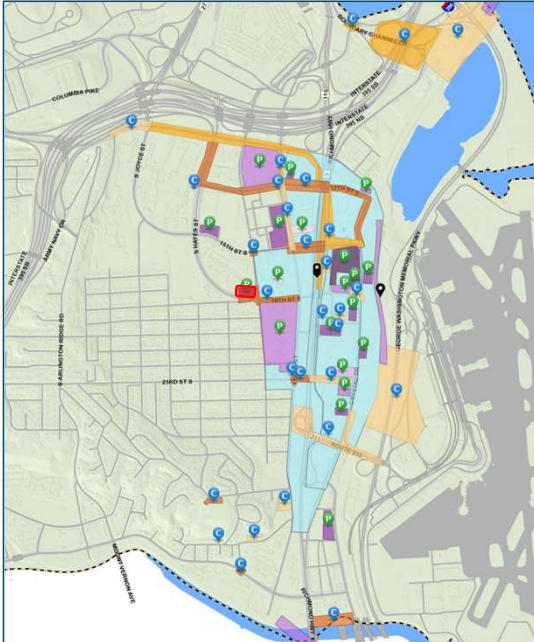
Construction
completion anticipated
Fall 2024 – East Tower
and Spring 2025 –
West Tower

Developer:

JBG Smith

Dominion Substation – U-1815-69-1

PRIVATE PROJECT UPDATE



More Information: visit arlingtonva.us and search "Dominion Energy Substation"

UPDATES

- All sidewalks and travel lanes are open



Goals & Scope:

Existing substation expansion and public art installation
Landscape and streetscape improvements

Basis:

County Board approval
November 14, 2020

Status:

Construction completion
anticipated Spring 2025

Developer:

Dominion Energy Virginia

Completed Projects

County Projects

- 23rd Street South Realignment – Phase 1
- 15th Street South Pedestrian Improvement
- Potomac Yard–Four Mile Run Trail Connector
- Crystal City Bike Network (CCBN) Phases I & II
- Transitway Extension to Pentagon City (TETPC) – Segment 1
- 12th St. South Complete Street
- 18th St. South (Fern to Eads) Complete Street

Private Development Projects

- MetPark 6-8 (Amazon HQ2)
- Pentagon Centre Building C – The Milton
- Crystal City Water Park
- Dining in the Park
- Century Center Plaza / Streetscape
- 1900 Crystal Drive

Public Engagement Forecast

Upcoming Engagements

- Long Bridge Drive Multimodal Connection
 - Online feedback form launching next week
 - Concept Design Public Meeting Thursday, September 26, 2024 ~5:30-8pm
- Update to the Master Transportation Plan
 - Public process kickoff anticipated Fall 2024

Construction Updates

- Ongoing, as needed via:
 - **Crystal City-Pentagon City Transportation Update**
 - **NextDoor**
 - **National Landing BID**
 - Facebook
 - Twitter

Stay informed!

- Info on all engagement opportunities and construction updates are shared through the **Crystal City-Pentagon City Transportation Update** newsletter – find it on any project page
- CC/PC Project Map is updated quarterly

Questions?

Jason Widstrom: jwidstrom@arlingtonva.us, 571-239-5197

Joanne Gabor: jgabor@arlingtonva.us, 703-228-3692

Nate Graham: nsgraham@arlingtonva.us, 703-228-3112



Thank you

