



SWMP/ZWP Plan Overview



Section-by-Section Overview of Draft Plan



Table of Contents

Plan Oversight Executive Summary

- 1.0 Introduction
- 2.0 Population Projections and Waste Quantities
- 3.0 Current System
- 4.0 Waste Management Hierarchy
- 5.0 Planning Considerations



- 6.0 Plan to Meet State Requirements
- 7.0 Zero Waste Plan
- 8.0 Funding
- 9.0 Stakeholder Engagement

Appendices

- A SWMP Board Adoption Resolution
- B Historical Waste Generation, Disposal & Recovery
- C Waste Composition Profiles
- D Board Zero Waste Resolution
- E Zero Waste Initiative Details
- F Community Feedback

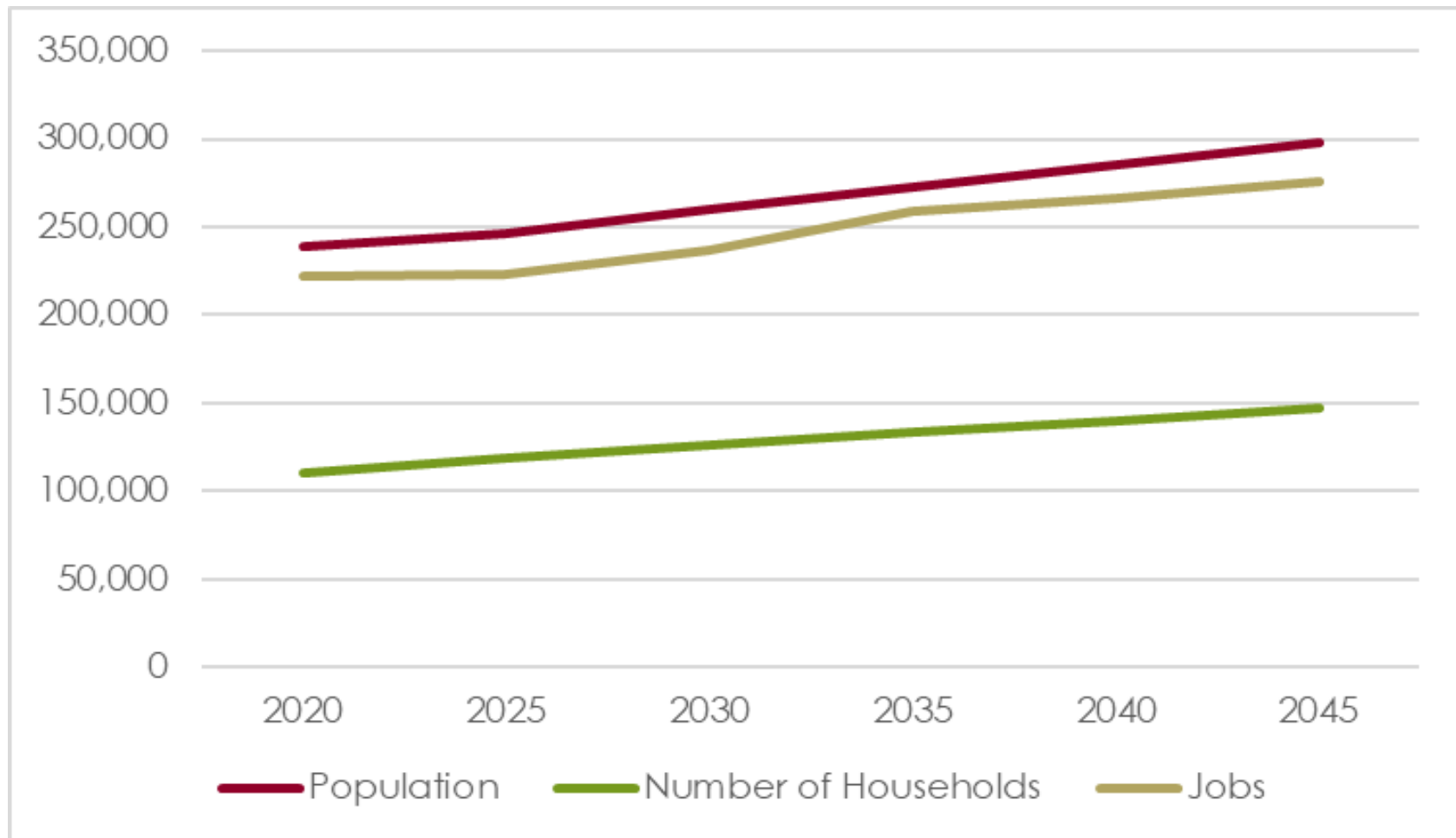


1.0 Introduction



The Arlington County Solid Waste Management Plan (SWMP) is Arlington County's planning document that summarizes the County's solid waste management activities and options for the next 20 years.

2.0 Population Projections and Waste Quantities



2.0 Population Projections and Waste Quantities (cont.)

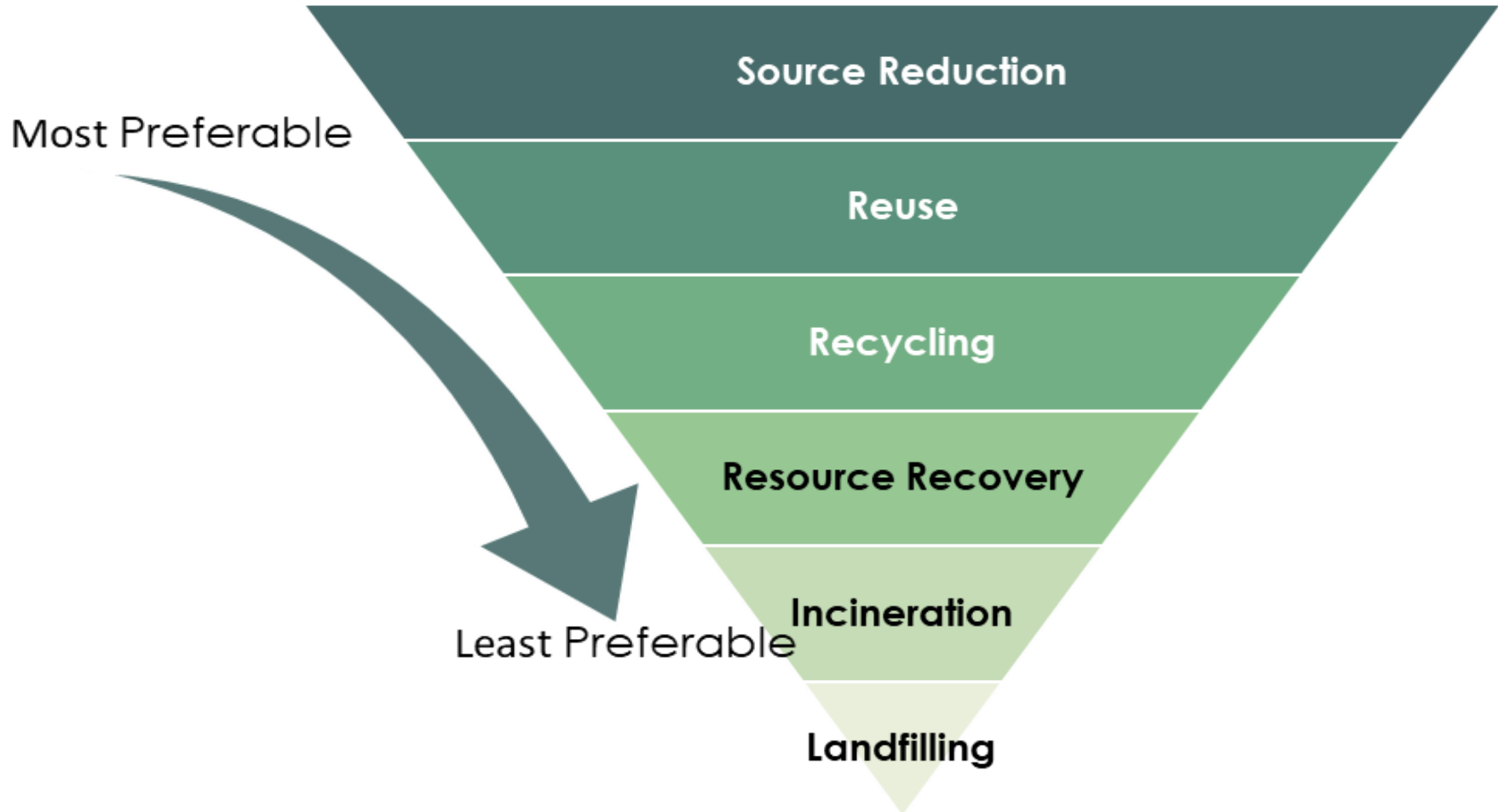
Waste Generation	2020	2025	2030	2035	2040	2045
County Population	238,643	245,800	260,200	272,900	285,200	298,000
Per Capita Waste Generation (lbs/person/day)	4.6	4.6	4.6	4.6	4.6	4.6
TOTAL MSW Generation (tons)	201,000	207,000	219,000	230,000	240,000	251,000

3.0 Current System

- Contracted Infrastructure
- County-Owned Infrastructure
- Services
- Additional Materials
- Public Education and Outreach
- Public/Private Partnerships
- Litter Control



4.0 Waste Management Hierarchy



5.0 Planning Considerations

- Disposal
- Transfer
- Diversion
 - Recycling
 - Organics
 - Food Rescue
 - AD

*“...the County acknowledges that a certain amount of residual waste is inevitable, and thus will continue to give **preference to waste-to-energy technology as the primary means of disposal** rather than landfilling, consistent with the U.S. Environmental Protection Agency’s waste management hierarchy”*

Arlington County Board, Zero Waste Resolution, November 19, 2015,

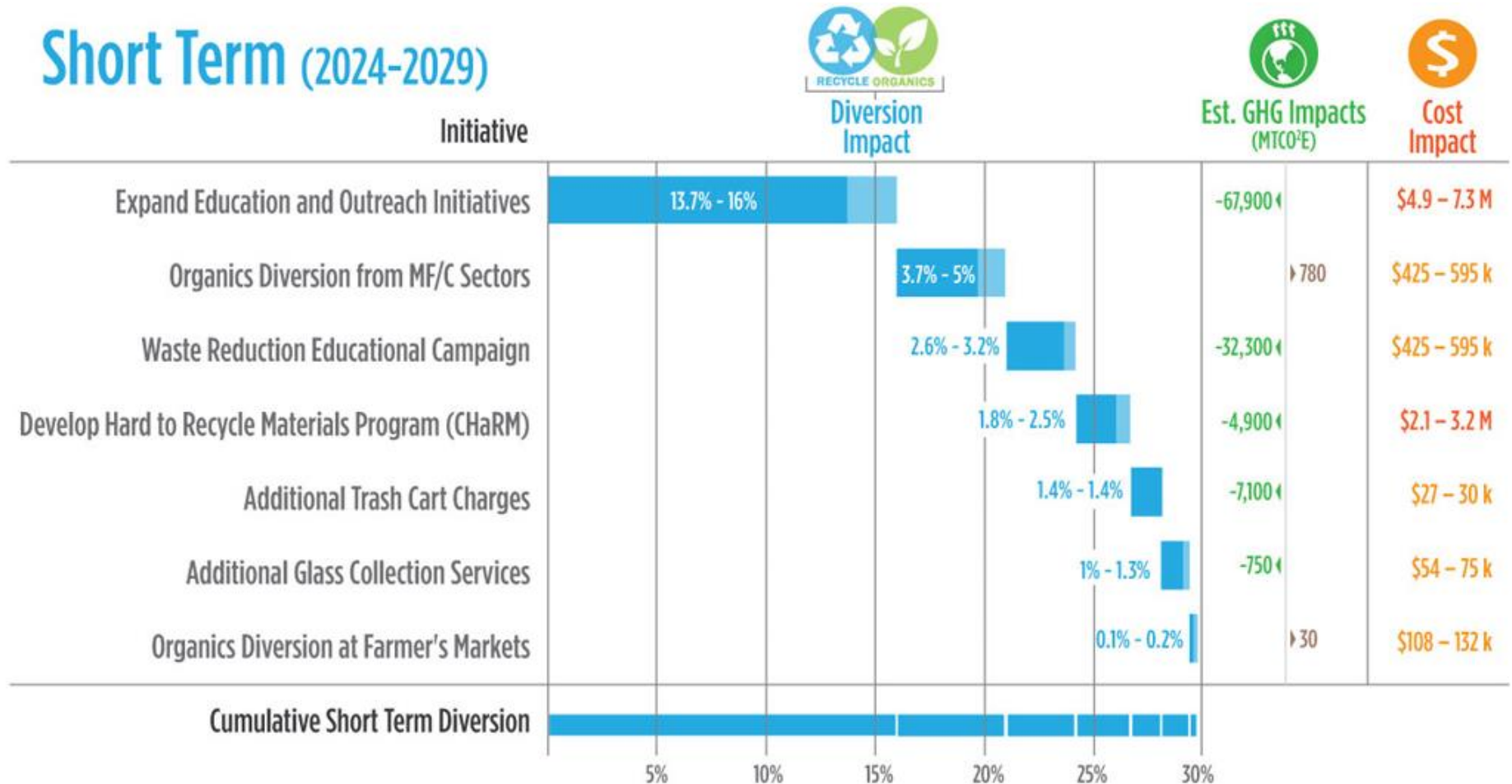
6.0 Plan to Meet State Requirements

Arlington County Goals to Achieve State Diversion Requirements

- **Goal A:** Employ a comprehensive solid waste management system that considers the State of Virginia's waste management hierarchy.
- **Goal B:** Ensure that the County continues to implement a strong recycling program and that the County recycling rate, at a minimum, meets the State of Virginia's recycling goals.
- **Goal C:** Carefully evaluate the waste management needs of the County for the next 20 years and identify the actions necessary to meet those needs.

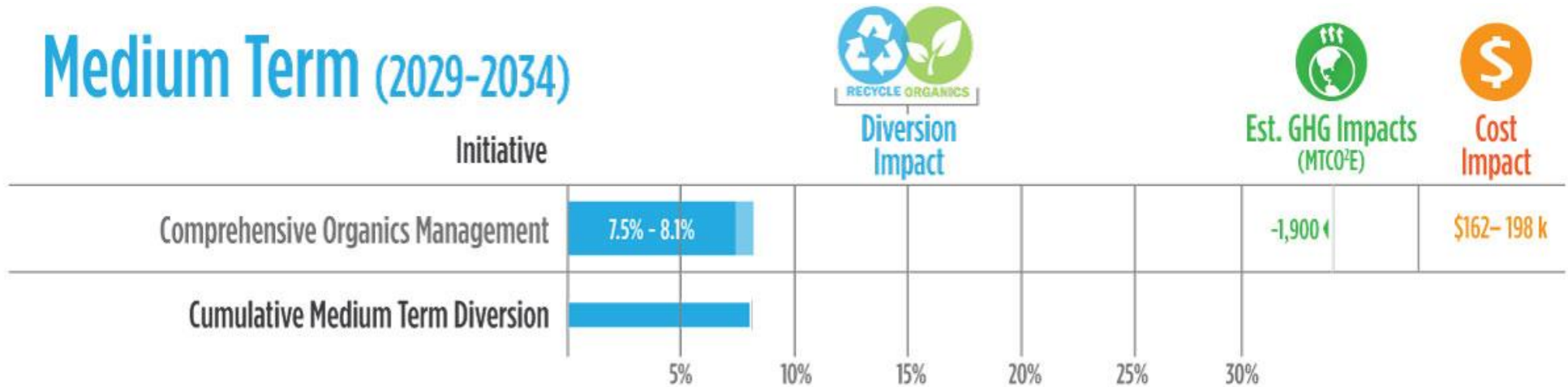
7.0 Zero Waste Plan – Short-Term

Short Term (2024-2029)



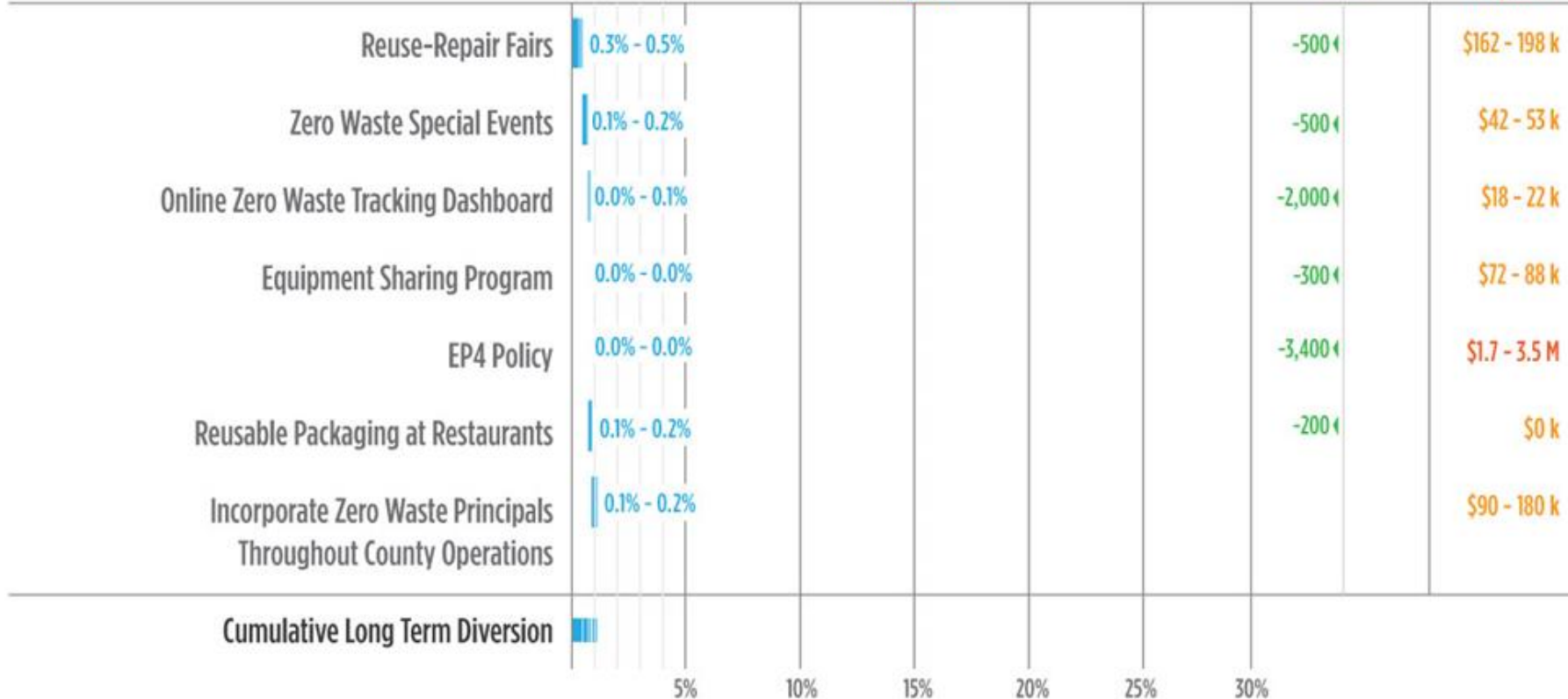
7.0 Zero Waste Plan – Medium-Term

Medium Term (2029-2034)



7.0 Zero Waste Plan – Long-Term

Long Term (2024-2038)



8.0 Funding

Funding Mechanism	Description
Household Solid Waste Rate	Charged to all residential properties receiving County curbside collection services.
Multi-family and Commercial Recycling Program Fee	Full-cost recovery fee for supporting material management in these sectors.
Plastic Bag Tax	Fee charged to consumers for use of single-use disposable bags at grocery and retail stores
General Fund	Provides the resources for general County operations. The fund may also serve to help support the zero waste initiatives discussed as part of this plan.
Environmental Investment Fee (EIF)	Fee that can be levied to both residential and commercial entities based on an entity's estimated waste generation rate.

9.0 Stakeholder Engagement

Solid Waste Committee

- E2C2
- Arlington Business Community;
- Arlington Citizens/Citizen Groups;
- Education Community;
- Restaurant/Hospitality Community;
- Environmental Community;
- Nonprofits/Trade Associations;
- Hauler/Processing Community;
- Office and Apartment Building Community; and
- Arlington Public Schools

Community Feedback

- Appendix F



Questions?

Feedback

- Draft will be sent to SWC
- Send feedback to Doug Krietemeyer
 - dkrietemeyer@arlingtonva.us
- Please send feedback in an email or word document
 - keep feedback to big picture, clarity, organization, etc.
 - group comments by section or generally if it applies to the plan broadly.



Summer Timeline

- June 15 – plan overview
- July 20
 - discussion and clarification
 - comments/feedback/questions submitted to Doug
- August
 - no meeting, SWB/SCS revise plan based on SWC's feedback
 - revised plan circulated to SWC
- September – vote to release plan for public comment

