

## ARLINGTON COUNTY PROFILE

### OVERVIEW OF ARLINGTON

Arlington County is located in northern Virginia, directly across the Potomac River from Washington, D.C. The County encompasses 25.8 square miles of land, which was originally split off from Fairfax County in 1801 and ceded by Virginia to be included in the ten-mile square Federal District. In 1847, however, Congress allowed the land to return to the jurisdiction of Virginia following a vote in favor of retrocession by its members. This area was then known as Alexandria City and Alexandria County. In 1920, to avoid confusion, the county was renamed Arlington County.

Annexation of any part of Arlington County by neighboring jurisdictions is prohibited by present law unless the entire County is annexed with the approval of County voters. There are no jurisdictions with overlapping debt or taxing powers. The water and sewage systems are operated on a self-supporting basis by the County government.

Arlington's location in the center of the Washington metropolitan region, just five minutes from Washington by car or Metrorail, has made the County a highly desirable business and residential location. Arlington has maintained high-quality residential neighborhoods while supporting well-managed growth. High-density commercial and residential development is focused around Metro stations in the Rosslyn-Ballston corridor and the Richmond Highway corridor, which includes both Pentagon City and Crystal City.

Arlington County has an estimated 2026 population of 244,300, an increase of 2.4% since the 2020 decennial census count of 238,643. Additionally, Arlington is home to an estimated 219,700 jobs, as of January 1, 2026.

Almost all land in Arlington County has been developed. This development consists of extensive single-family residential areas as well as commercial, office, and multi-family residential structures.

Economic activity in Arlington County has historically been closely associated with numerous governmental activities of the Washington Metropolitan region. In 2026, about 20.0 percent (or about 43,100) of the jobs in Arlington County are with the numerous federal, state, or local government agencies. In recent years, however, the private employment base, particularly in the service sector, has increased and surpassed the government sector. The 2025 estimates show that sectors of the professional and technical services (26.3 percent and 57,800 jobs) and other services (22.6 percent and 49,600 jobs) have become the top industries for employment in Arlington County.



**ORGANIZATION OF ARLINGTON COUNTY GOVERNMENT**

The government of Arlington County has been organized according to the County Manager Plan of Government since 1932. Arlington County was the first jurisdiction in the United States to adopt a manager form of government by popular vote.

The five members of the County Board are elected at large for staggered, four-year terms. No more than two members are elected at one time. The Chairperson of the County Board is elected annually by the members.

The County Board is responsible for several appointments. The County Board appoints a County Manager to serve as the chief executive and administrator of the County. The County Manager serves at the pleasure of the County Board, implements its policies, directs business and administrative procedures, and appoints department directors.

Assisting the County Manager are six Deputy County Managers and Assistant County Managers as well as the Directors of 12 departments: Fire; Police; Public Safety Communications and Emergency Management; Environmental Services; Human Services; Economic Development; Community Planning, Housing and Development; Parks and Recreation; Management and Finance; Libraries; Human Resources; and Technology Services.

The County Board also appoints an Auditor to complement and augment the County’s existing internal auditing program. The auditor, and an advisory committee, report directly to the County Board and focus on tightening financial oversight and deepening program performance review.

Finally, the County Board appoints a County Attorney. The County Attorney provides legal services to the County Board, County agencies and personnel, elected County officials, independent County boards and commissions.

The operation of public schools in Arlington County is the responsibility of a five-member School Board. School Board members serve staggered, four-year terms in a sequence similar to that of County Board members.

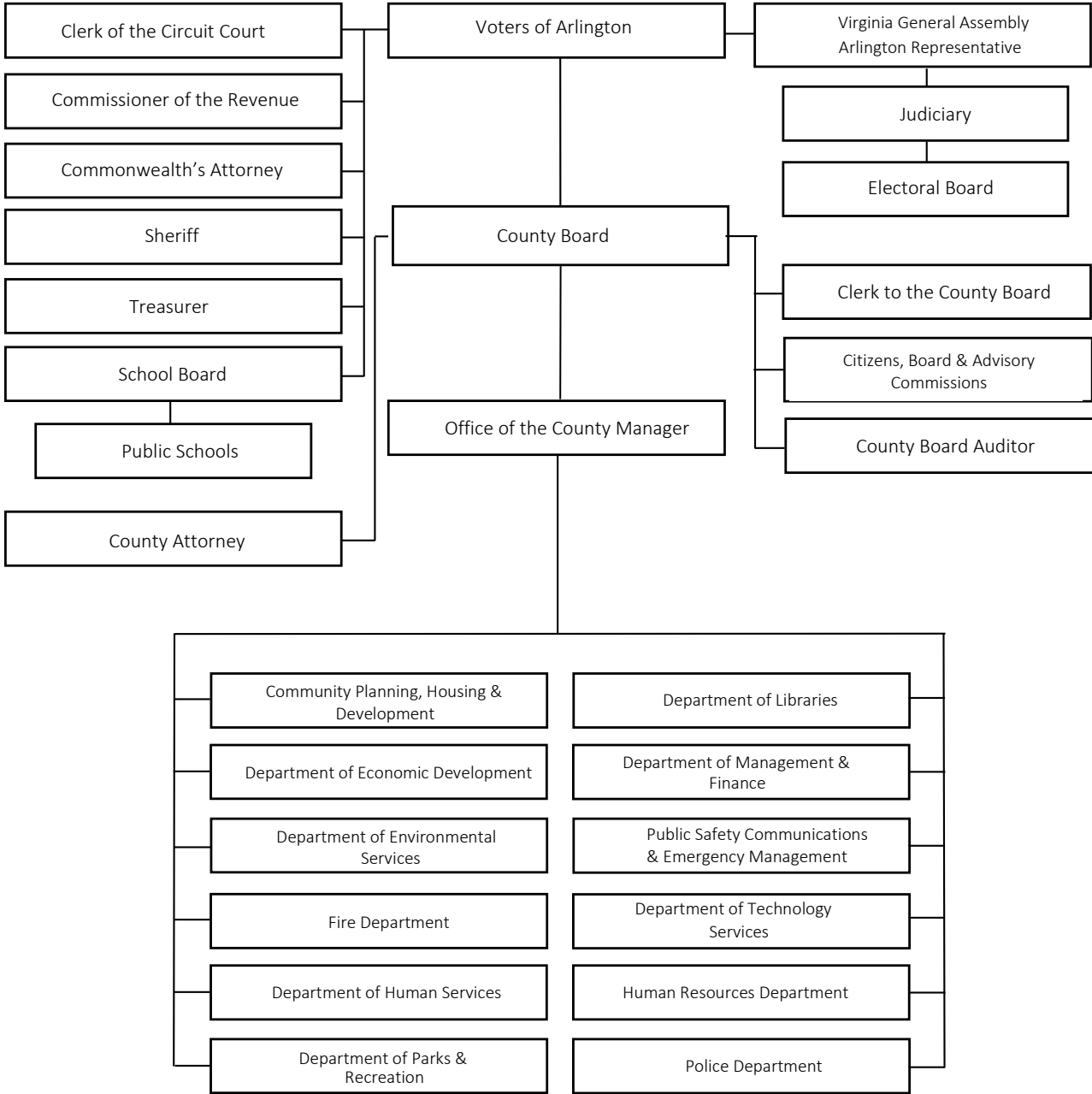
A 1992 revision of the State Code provided a local option to elect the School Board; Arlington voters chose to exercise that option via a November 1993 referendum. As of November 1994, and continuing each year thereafter, School Board members are elected.

The Superintendent of Schools is appointed by the School Board for a four-year term; the Superintendent administers the operations of the County’s public schools. The local share of the cost of operating public schools in the County is met with an appropriation and transfer by the County Board from the County’s General Fund. Operations of the School Board, however, are independent of the County Board and the County administration as prescribed by Virginia law.

In addition to the County Board, other elected County officials include the Commonwealth’s Attorney, Sheriff, Commissioner of the Revenue, Treasurer, and Clerk of the Circuit Court. The Judges of the Circuit Court, the General District Court, and the Juvenile and Domestic Relations District Court are appointed by the State legislature.

The structure of Arlington County’s Government is depicted in an organizational chart on the following page.

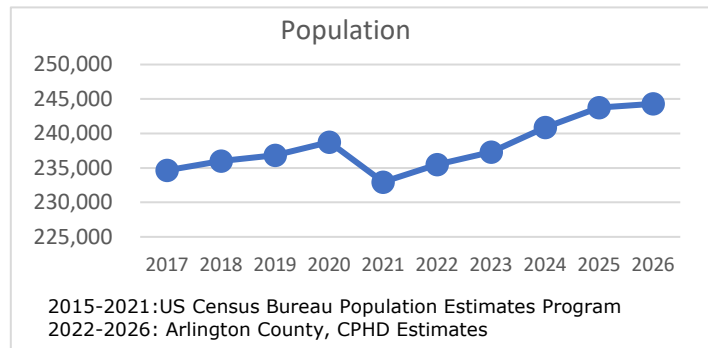
**ORGANIZATION OF ARLINGTON COUNTY GOVERNMENT**



**DEMOGRAPHICS**

The Department of Community Planning, Housing and Development (CPHD) estimates Arlington County’s 2026 population to be 244,300. Arlington continues to be among the most densely populated jurisdictions in the Country. The County’s population has continued to experience growth with a slight decline in population in 2021 following the COVID-19 pandemic. The population has surpassed that of the 2020 Census and is expected to increase going forward.

The 2020 Estimation model utilizes the Master Housing Unit Database (MHUD) (updated twice a year), most recent vacancy data from Costar and the U.S. Census Bureau, and average household size factors from the American Community Survey. The MHUD provides a complete snapshot of all housing in Arlington. This new method applies a vacancy/occupancy rate and average household size factor to each housing unit and estimates the population for each unit or multifamily complex.



In developing this methodology, the estimates were compared to the decennial count and intercensal estimates produced by the Census Bureau.

CPHD estimates that 18.4 percent (45,070 persons) of the population are under the age 20. Individuals between the ages of 20-24 make up 7.1 percent or 17,390 persons. Those between the ages of 25-34 make up the largest share of the population at 23.8 percent or 58,070 persons. Persons between the ages of 35-44 represent 16.1 percent of the population (or 39,240 persons), those between the ages 45-64 make up 22.6 percent (or 55,200 persons), those between the ages of 65-84 make up 10.7 percent (or 26,090 persons), and those 85 and over represent 1.3 percent of the population (or 3,240 persons).

**RACIAL/ETHNIC COMPOSITION**

Arlington County takes pride in, and gains vitality from, the diversity of its population. CPHD estimates 58.1 percent of Arlington residents are white, 15.4 percent are Hispanic, 9.2 percent are black or African-American, 11.1 percent are Asian or Other Pacific Islanders, less than one percent are American Indian or Alaska Native, and 6.1 percent identified as another race or two or more races. (Note: percentages may not add due to rounding.)

CPHD estimates that the aggregate population of Arlington increased by 17.7 percent between 2010 and 2026. From 2010 to 2026, the largest increase in population among the racial/ethnic groups was an increase of about 8,859 among the White population. Among other groups, the Asian population and the population of two or more races also increased substantially, by 7,308 and 8,104 persons, respectively. The Hispanic population increased by over 6,138 persons. The following table shows the change in population among various racial/ethnic groups from 2010 to 2026. The 2010 numbers are from the Decennial Census and 2026 numbers are from CPHD Estimates.

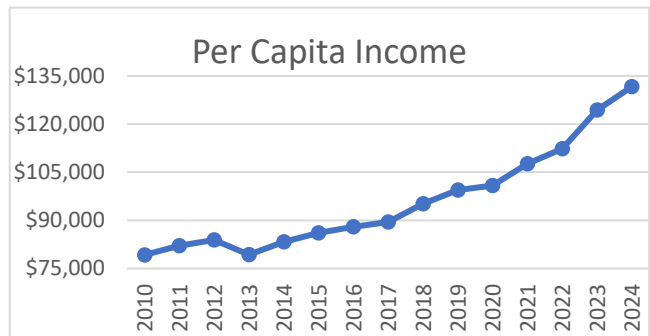
Racial/Ethnic Group	2010	2026	% Change
<b>Non-Hispanic/Latino</b>			
White	132,961	141,820	6.7%
Black or African American	17,088	22,460	31.4%
American Indian or Alaska Native	394	300	-23.9%
Asian	19,762	27,070	37.0%
Native Hawaiian or Other Pacific Islander	133	110	-17.3%
Some Other Race	611	1,620	165.1%
Two or More Races	5,296	13,400	153.0%
<b>Total Non-Hispanic/Latino</b>	<b>176,245</b>	<b>206,780</b>	<b>17.3%</b>
<b>Hispanic/Latino</b>	<b>31,382</b>	<b>37,520</b>	<b>19.6%</b>

**EDUCATION**

Arlington’s population is among the most highly educated in the country. According to the U.S. Census Bureau 2024 American Community Survey and CPHD Estimates, 95.5 percent of all household residents age 25 and older were high school graduates, 78.0 percent were college graduates, and of that 42.0 percent had graduate or professional degrees. Of the Arlington Public School (APS) class of 2025, 89 percent planned to pursue higher education, and the average expenditure per pupil was expected to be \$25,406 in fiscal year 2026.

**PERSONAL INCOME**

The educational achievements of Arlington’s population are reflected in the County’s income statistics as well. For 2024, the Bureau of Economic Analysis reported that Arlington’s per capita personal income was \$131,624. According to the U.S. Census American Community Survey, the median household income in Arlington County in 2024 was \$142,114. The Per Capita Income graph above shows the growth in per capita personal income since 2010. Income figures for 2010 through 2024 are from the U.S. Bureau of Economic Analysis.



**HOUSING**

According to CPHD estimates, there are 127,090 total housing units in Arlington as of January 2026. A housing unit is a multi-family dwelling, a single-family dwelling attached to other dwellings, or a single-family detached dwelling. The majority (72.7 percent or 92,370) of housing units in Arlington are multi-family. There are an estimated 27,580 single-family detached (21.7 percent), and 7,140 single-family attached housing units (5.6 percent) in Arlington. Between January 2020 and January 2026, 9,790 new multi-family units have been completed (an increase of 11.7 percent), compared

to a net of 141 single-family attached units. There has been a net loss of 120 single family detached units during the same time span. According to CPHD estimates, owners occupy 36.0 percent and renters occupy 64.0 percent of occupied housing units.

**HOUSEHOLD COMPOSITION**

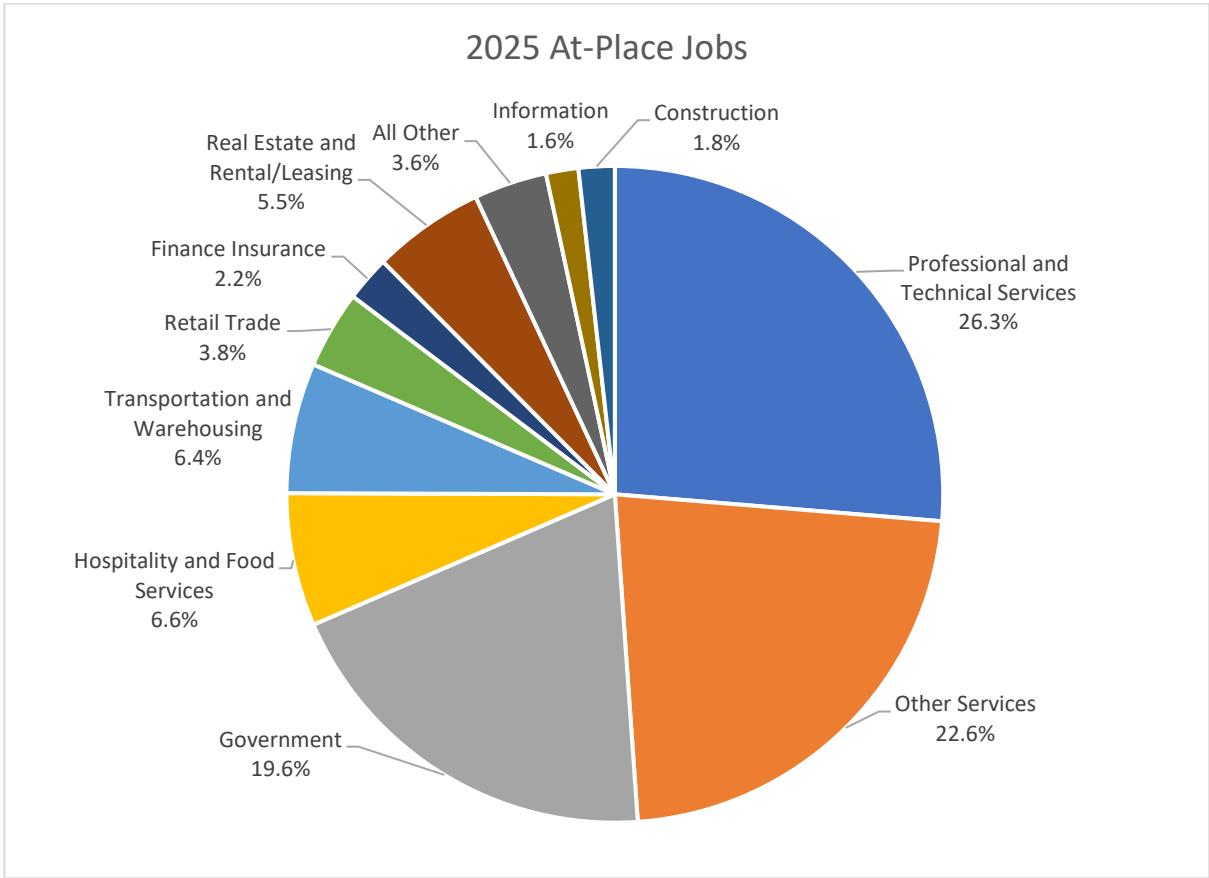
All persons living in a housing unit are termed a household. As of January 2026, CPHD estimates that there are 120,240 households in Arlington County. According to the 2020 Census, the average household size is 2.14 persons. The 2024 American Community Survey estimates Arlington’s average household size has declined to 2.08 persons per household. CPHD estimates 43.1 percent of Arlington households were family households and 56.9 percent were non-family households.

**COMMUNITY FACILITIES IN ARLINGTON**

▪ County Owned and Maintained Parkland	956 acres	▪ Rectangle Fields	44
▪ NOVA Parks	137 acres	▪ Libraries	8
▪ Paved & Natural Surface Trails (miles)	55.25	▪ Nature Centers	3
▪ County Owned or Maintained Parks	167	▪ 55+ Centers	5
▪ Tennis and Basketball Courts	173	▪ Community Centers	13
▪ Diamond Fields	34	▪ Fire Stations	9

**AT-PLACE EMPLOYMENT**

According to Arlington County estimates, the total number of jobs in the County decreased by about 0.9 percent between 2020 and 2026. The service sector comprises a significant share of jobs in Arlington. About 26.3 percent of all jobs are in the professional and technical services sector. Another 22.6 percent of jobs are in other service sectors, including administrative, education, and health. The government sector also continues to comprise a large share of Arlington jobs. About 19.6 percent (43,100 jobs) of the County’s January 2026 employment is estimated to be in government. 2023 was the first year that the government sector dropped from second to third largest sector for at-place jobs in Arlington County.



**At-Place Employment**

Professional and Technical Services	57,800
Other Services	49,600
Government	43,100
Hospitality and Food Services	14,400
Transportation and Warehousing	14,100
Real Estate and Rental/Leasing	12,100
Retail Trade	8,400
All Other	7,900
Finance Insurance	4,900
Construction	3,900
Information	3,500
<b>TOTAL</b>	<b>219,700</b>

Source: Sector employment are Arlington County CPHD estimates based on data from the U.S. Bureau of Economic Analysis for the year 2022 and Bureau of Labor Statistics Quarterly Census of Employment and Wages year 2025. Note: Jobs by sector may not add due to rounding.

**TOP 10 PRINCIPAL PRIVATE EMPLOYERS**

COMPANY	NATURE OF BUSINESS
Accenture	Business Services
Amazon	Electronic Shopping
Bloomberg Industry Group	Legal, Tax and Business News
Booz Allen Hamilton	Business Services
CoStar	Business Services
Deloitte	Business Services
Lidl	Grocery Stores
Marymount University	Education
Nestle	Packaged Goods
Virginia Hospital Center	Medical Services

Source: Arlington Economic Development

**SELECTED SERVICE INDICATORS**

	FY 2023 Actual	FY 2024 Actual	FY 2025 Estimate	FY 2026 Estimate
General Obligation Bond Rating	Aaa/AAA/AAA	Aaa/AAA/AAA	Aaa/AAA/AAA	Aaa/AAA/AAA
New Voters Registered by Electoral Board (Calendar Year)	11,327	18,965	12,000	12,000
Inspections Conducted for Fire Code Enforcement, fire protection system, and hazardous materials inspections	1,700	2,252	2,500	2,700
Percentage of Fire Emergencies Reached Within Four Minutes of Turnout	51.97%	22.35%	25.00%	25.00%
Fire/EMS/Public Service Responses	70,720	73,134	73,000	74,000
Total Curbside Trash Tonnage Collected	24,864	26,946	27,754	28,023
Total Curbside Recycling Tonnage Collected	9,825	7,746	7,657	7,600
Licensed Child Care Facilities (Family Day Care Homes)	130	112	112	112
Number of resident registrations in Parks and Recreation programs	75,018	79,941	81,000	82,000
Number of individuals registered with the Office of 55+ Programs	5,986	6,455	6,750	7,000
Police response time for Priority 1 calls (minutes from dispatch to arrival)	4:39	4:22	4:15	4:15