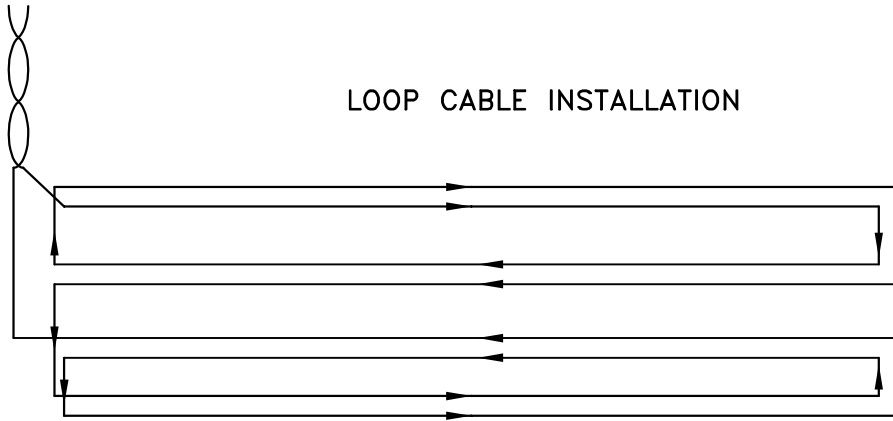
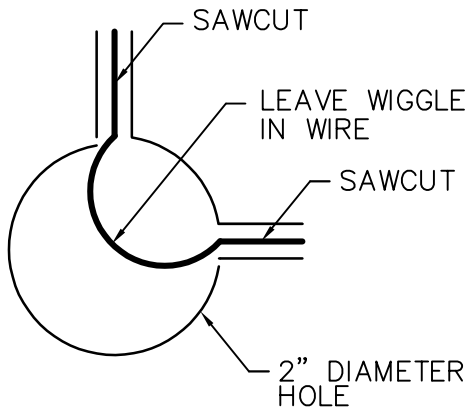


LOOP CABLE INSTALLATION



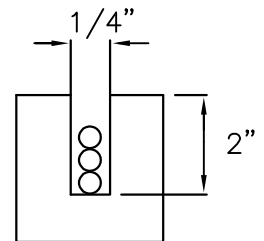
**NOTES:**

1. DRILLED CORNERS SHALL BE 2" DIAMETER HOLES DRILLED TO THE DEPTH OF SAWCUT. AFTER INSTALLATION OF LOOP WIRE, FILL SAWCUT WITH SEALANT.
2. CONTRACTOR HAS THE OPTION TO USE DETAIL "B" FOR 90° DRILLED CORNERS IN PLACE OF 45° CUT CORNERS.



DETAIL "B"

45° CUT CORNERS



SECTION A-A

INDUCTION LOOP DETECTOR (6' x 40')

REVISION & DATE	



ARLINGTON COUNTY, VIRGINIA  
DEPARTMENT OF ENVIRONMENTAL SERVICES

DRAWING NO.  
**78-03**