

Wilson Boulevard – Concept Design

N. George Mason Drive to N. Vermont Street

Resurfacing for Complete Streets Projects – June 2022

Project Background

One of the ways Arlington County delivers on the Master Transportation Plan Complete Streets policy is to review the annual list of streets up for routine maintenance and identify those that might benefit from cost-effective measures to improve safety and access for all people using a street.

At this second touchpoint, you will be able to review concept designs for each of the street segments under consideration for the 2022 Resurfacing for Complete Streets program.

Existing Conditions Feedback

In April 2022, the county project team hosted a virtual open house and collected online feedback from community members about existing conditions. This initial and critical phase of public engagement gave the County valuable insights into respondents' challenges and concerns for the roadway. This feedback helped inform the concept design.

What We Heard

- Concern for pedestrian safety (improve crossings, shorten crossing distances, add buffer space between people walking and people driving)
- Concern for bicyclist safety and a desire for improved bike facilities
- Desire for wider sidewalks (out of scope for this project)
- Concern for turning movements at N. Vermont Street

A longer engagement summary and record of all the comments received is available on the project page.

Concept Design

The concept designs were created based on community feedback about existing conditions received at our first touchpoint, along with existing plan guidance and other data. The feedback you provide will help the project team refine final concepts to be implemented in late summer/early fall.

Concept Design Highlights

- A roadway reconfiguration to provide one vehicle travel lane in each direction with a center turn lane to facilitate turn movements for people driving and help manage vehicle speeds
- An extended turn lane for people driving east on Wilson Boulevard and turning north onto N. George Mason Drive
- Dedicated turn lanes are provided for WB drivers turning south onto Wakefield Street and Edison Street, and the EB left turn lane at George Mason was lengthened

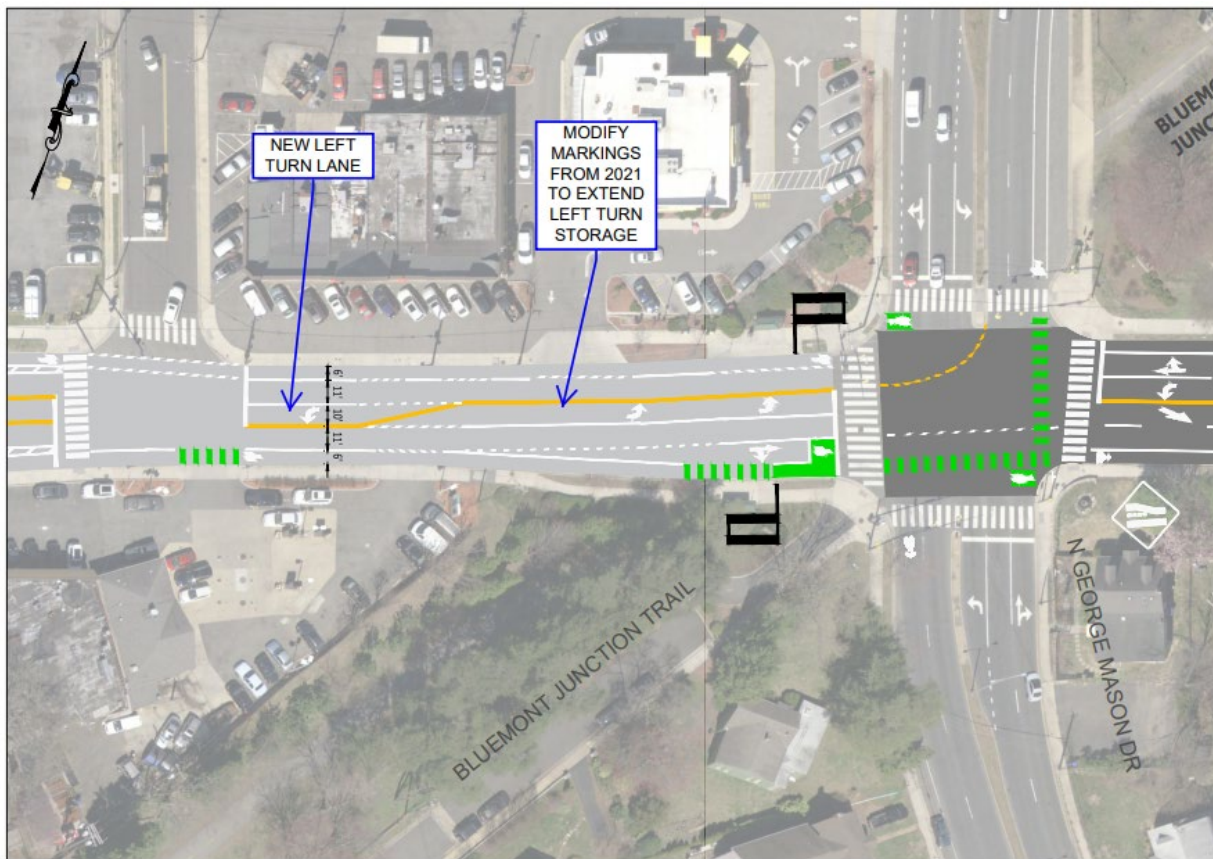
- Bike lane added in both directions between N. George Mason Drive and N. Wakefield Street to improve access for people biking and provide buffer space between people driving and people walking on the narrow sidewalks
- Buffered and painted bike lane provided for EB people biking between N. Wakefield Street and N. Glebe Road
- Green markings added to high-conflict intersections
- Bike box added to S Glebe Road intersection to make it easier for people biking and driving to see each other at intersections and make it easier to turn or travel through the intersection
- All existing parking maintained

Concept Design

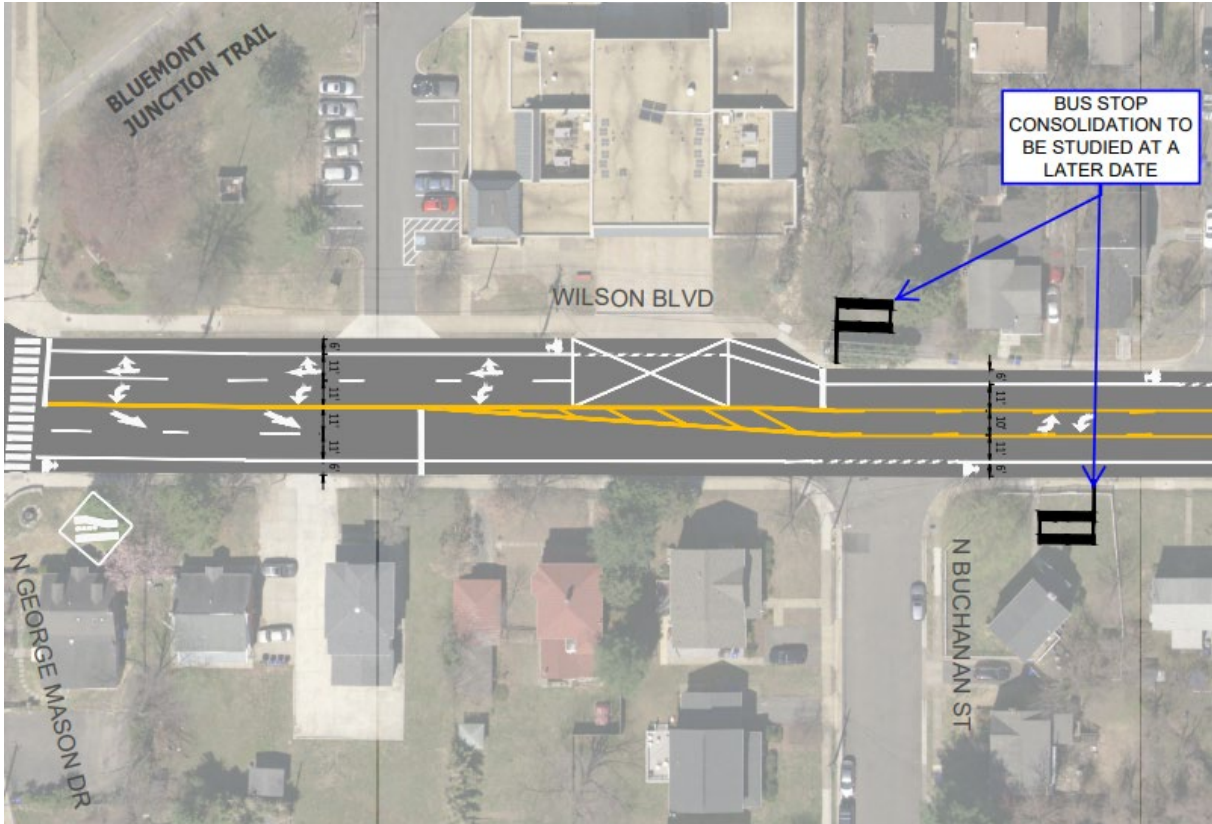
View a larger version of the concept design online:

https://www.arlingtonva.us/files/sharedassets/public/transportation/documents/2022_resurfacing/concept-designs/mar_wilson-blvd_n-george-mason-dr_n-vermont-st_compressed.pdf

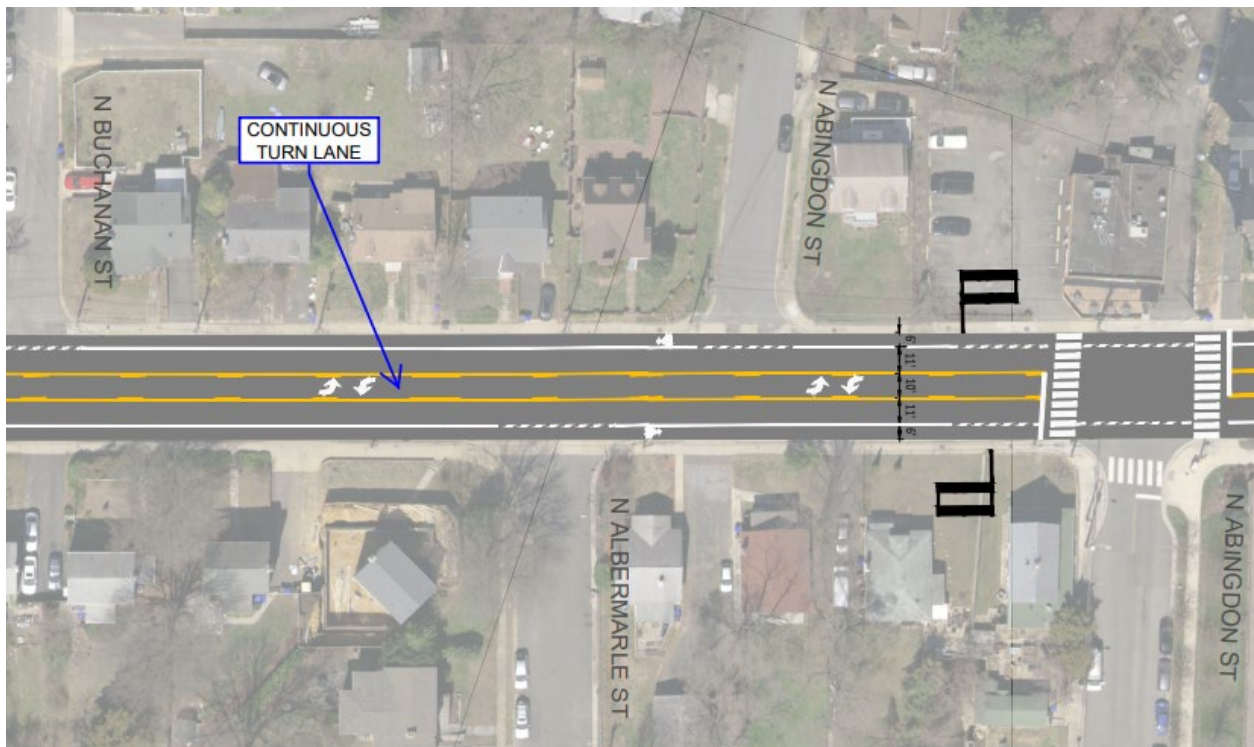
Section 1: George Mason Drive Intersection



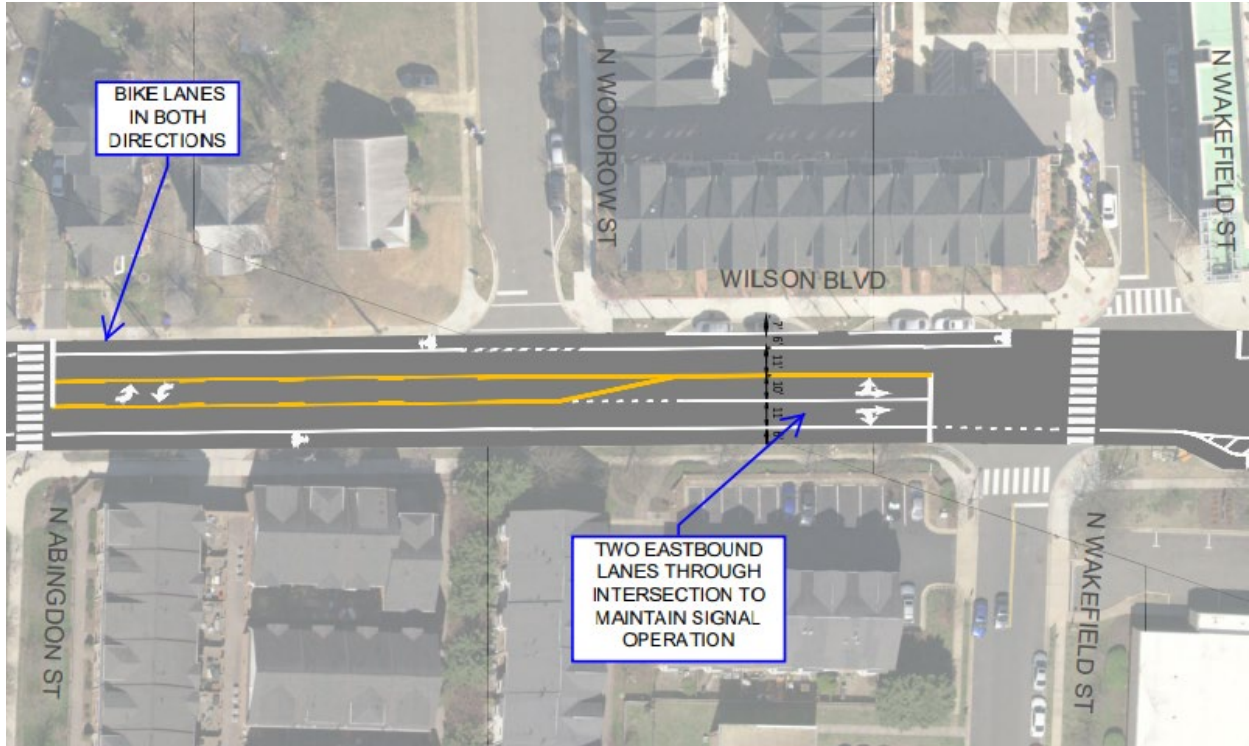
Section 2: N George Mason Drive and N Buchanan Street



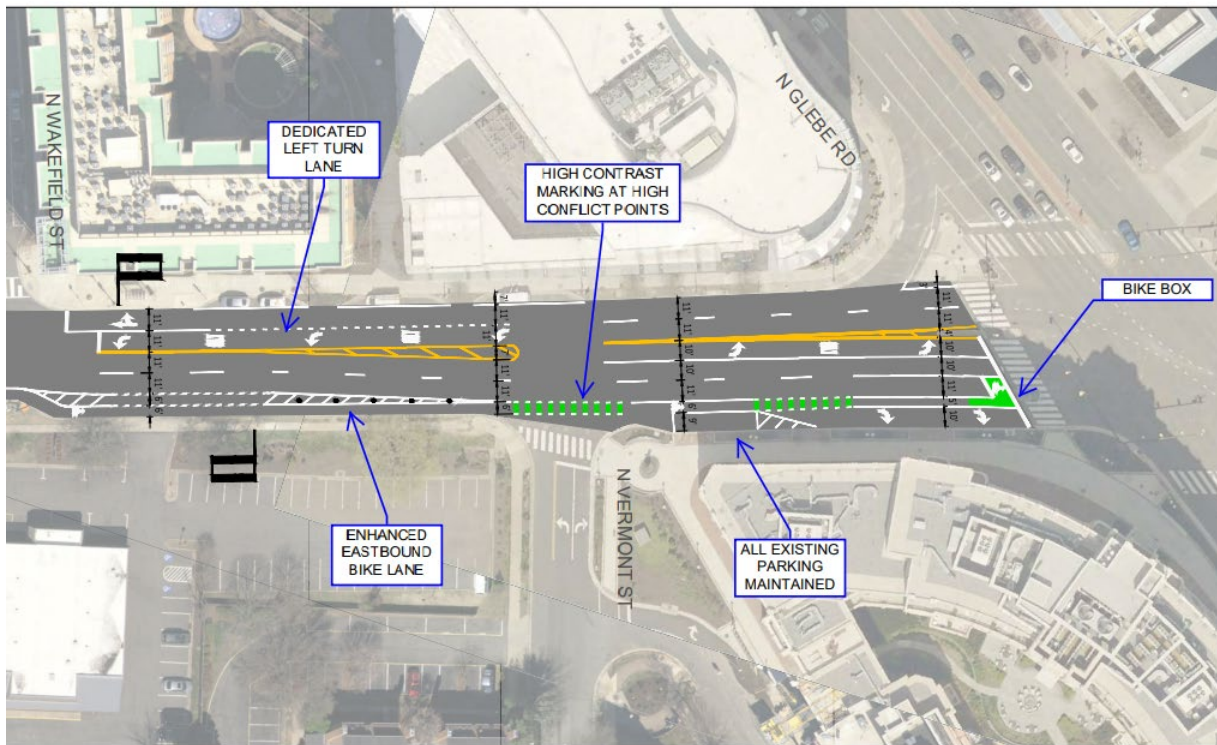
Section 3: N Albermarle Street and N Abingdon Street



Section 2: N George Mason Drive and N Buchanan Street



Section 3: N Wakefield Street to Glebe Road



More Information

Project Page: <https://www.arlingtonva.us/Government/Projects/Project-Types/Transportation-Projects/Resurfacing-Projects-for-Complete-Streets-%E2%80%93-2022-Season>

Project Contact:

Kevin Casadei

Transportation Engineering and Operations Project Manager

Email: kcasadei@arlingtonva.us

Tel: 703-228-0999