

MARBELLA APARTMENTS
SITE A: 1300 N PIERCE STREET
SITE B: 1305 N PIERCE STREET
4.1 SITE PLAN
ARLINGTON COUNTY, VIRGINIA

CURVE TABLE

NO.	RADIUS	LENGTH	DELTA	TANGENT	CHORD	CHORD BEARING
C1	89.11'	39.68'	25°30'44"	20.17'	39.35'	N 31°06'38" W

LOT COVERAGE SITE A

SITE AREA:	41,112 SF
BUILDING AREA:	26,038 SF
VEHICULAR AREA:	172 SF
TOTAL:	26,210 SF
(26,210 / 41,112) =	63.8%

AVERAGE SITE ELEVATION: 164.43 FT

SITE A - 1300 N PIERCE ST. SITE AREA TABULATION

ZONE RA6-15	
RPC 17-033-006	38,181 SF OR 0.8765 AC
RPC 17-033-009	2,931 SF OR 0.0673 AC
TOTAL AREA	41,112 SF OR 0.9438 AC

LOT COVERAGE SITE B

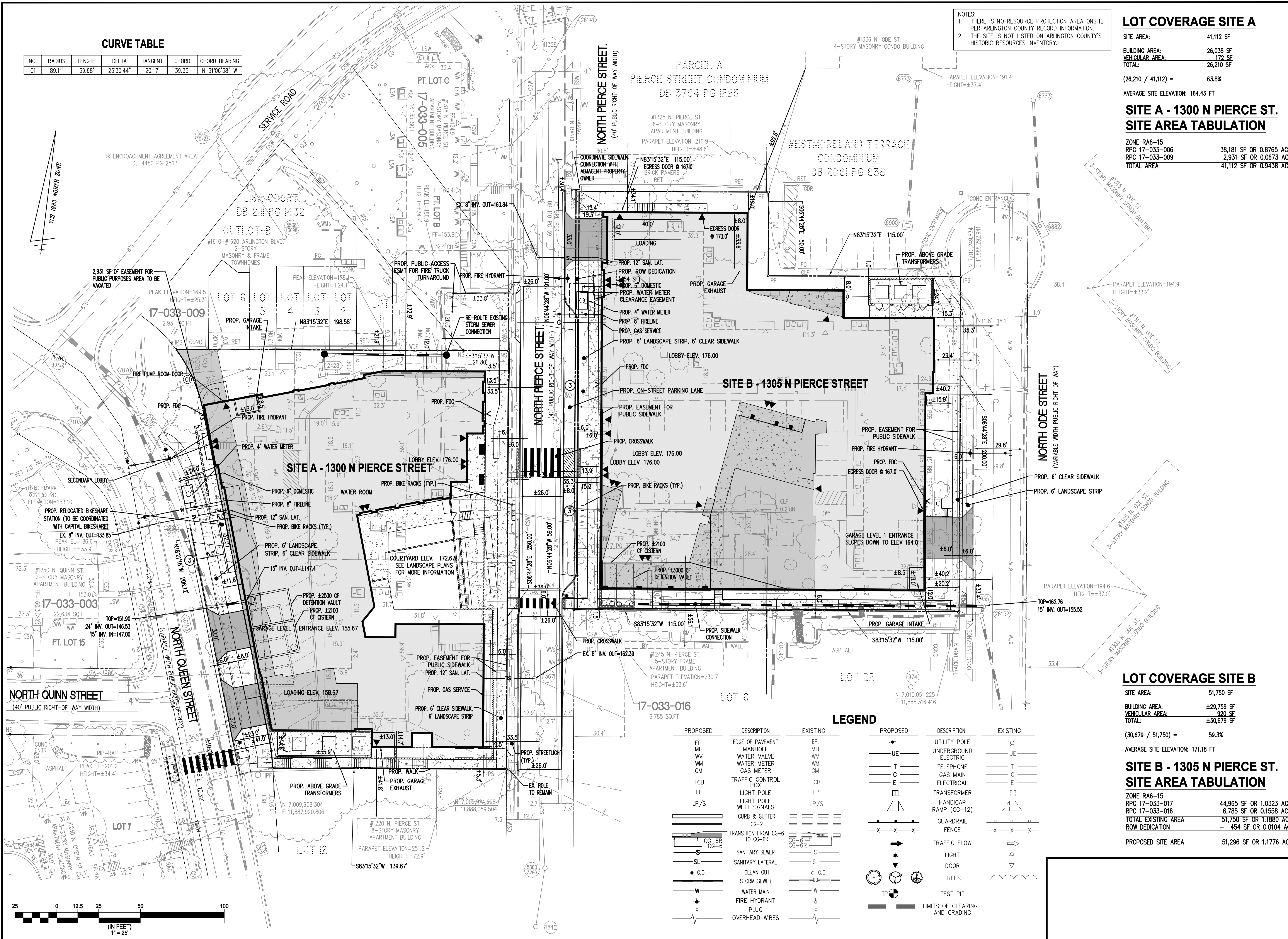
SITE AREA:	51,750 SF
BUILDING AREA:	±29,759 SF
VEHICULAR AREA:	920 SF
TOTAL:	±30,679 SF
(30,679 / 51,750) =	59.3%

AVERAGE SITE ELEVATION: 171.18 FT

SITE B - 1305 N PIERCE ST. SITE AREA TABULATION

ZONE RA6-15	
RPC 17-033-017	44,965 SF OR 1.0323 AC
RPC 17-033-016	6,785 SF OR 0.1558 AC
TOTAL EXISTING AREA	51,750 SF OR 1.1880 AC
ROW DEDICATION	- 454 SF OR 0.0104 AC
PROPOSED SITE AREA	51,296 SF OR 1.1776 AC

NOTES:
1. THERE IS NO RESOURCE PROTECTION AREA ONSITE PER ARLINGTON COUNTY RECORD INFORMATION.
2. THE SITE IS NOT LISTED ON ARLINGTON COUNTY'S HISTORIC RESOURCES INVENTORY.



LEGEND

PROPOSED	DESCRIPTION	EXISTING	PROPOSED	DESCRIPTION	EXISTING
EP	EDGE OF PAVEMENT	EP	UP	UTILITY POLE	UE
MH	MANHOLE	MH	UE	UNDERGROUND ELECTRIC	UE
WV	WATER VALVE	WV	T	TELEPHONE	T
WM	WATER METER	WM	G	GAS MAIN	G
GM	GAS METER	GM	E	ELECTRICAL	E
TCB	TRAFFIC CONTROL BOX	TCB	TR	TRANSFORMER	TR
LP	LIGHT POLE	LP	HC	HANDICAP RAMP (CG-12)	HC
LP/S	LIGHT POLE WITH SIGNALS	LP/S	G	GUARDRAIL	G
CC-6R	CURB & GUTTER CG-2	CC-6R	F	FENCE	F
CC-6	TRANSITION FROM CG-6 TO CG-6R	CC-6	TF	TRAFFIC FLOW	TF
S	SANITARY SEWER	S	L	LIGHT	L
SL	SANITARY LATERAL	SL	D	DOOR	D
C.O.	CLEAN OUT	C.O.	T	TREES	T
SS	STORM SEWER	SS	TP	TEST PIT	TP
W	WATER MAIN	W	LC	LIMITS OF CLEARING AND GRADING	LC
FH	FIRE HYDRANT	FH			
P	PLUG	P			
OW	OVERHEAD WIRES	OW			

