

DRAFT CONCEPT PLAN FOR REVIEW



DEPARTMENT OF ENVIRONMENTAL SERVICES
 Transportation Engineering and Operations Bureau
 2100 Cameron Boulevard, Suite 900
 Arlington, VA 22201
 Phone: 703.228.3344
 Fax: 703.228.3719

Seal

Approvals Date

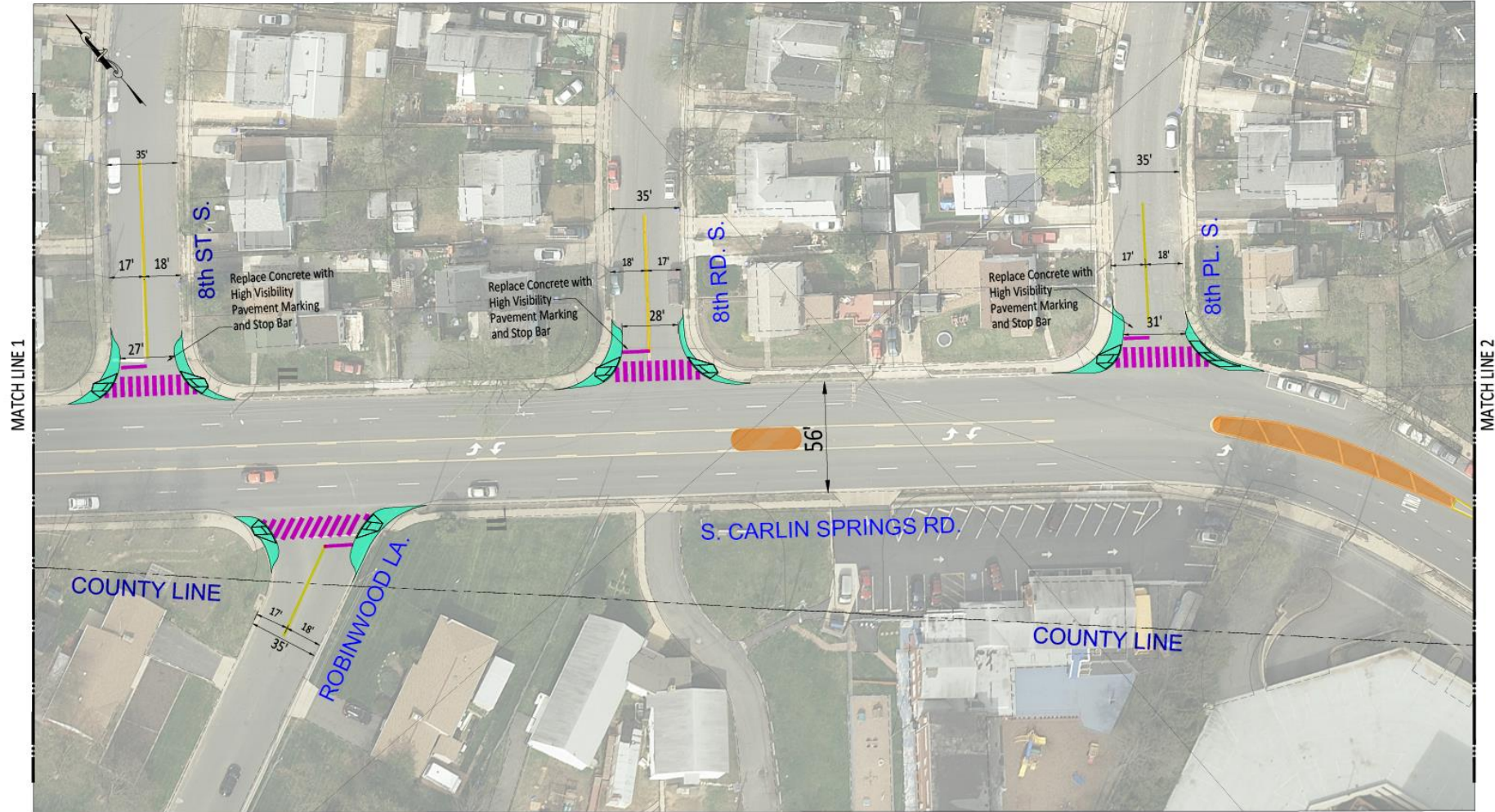
DESIGN TEAM SUPERVISOR

CHIEF T.E. & C. BUREAU

TRAFFIC SIGNAL ENGINEER

DEPARTMENT OF TRANSPORTATION

Revisions Date



MATCH LINE 1

MATCH LINE 2

LEGEND:

PROPOSED PAVEMENT MARKING	
PROPOSED CURB RAMP IMPROVEMENT	
PROPOSED POTENTIAL ISLAND	

Project Name and Location

Concept Plan
 South Carlin Springs Road
 From: 7th Road South
 To: Columbia Pike

Designed: NA
 Drawn: NA
 Checked: DN
 Miss Utility Transmittal #:
 File Name: DES_S Carlin Springs RA_7th Rd S_0 20160505.dwg
 Path: c:\na\m\100\carlin_springs_7th_rd_s\020160505.dwg
 Plotted: Feb 05, 2016
 Plotted by: nahsan
 Scale: Hor: 1" = 25'

Sheet
 2 of 3

DRAFT CONCEPT PLAN FOR REVIEW



DEPARTMENT OF ENVIRONMENTAL SERVICES

Transportation Engineering and Operations Bureau
 2100 Clarendon Boulevard, Suite 900
 Arlington, VA 22201
 Phone: 703.228.3344
 Fax: 703.228.3719

Seal

Approvals Date

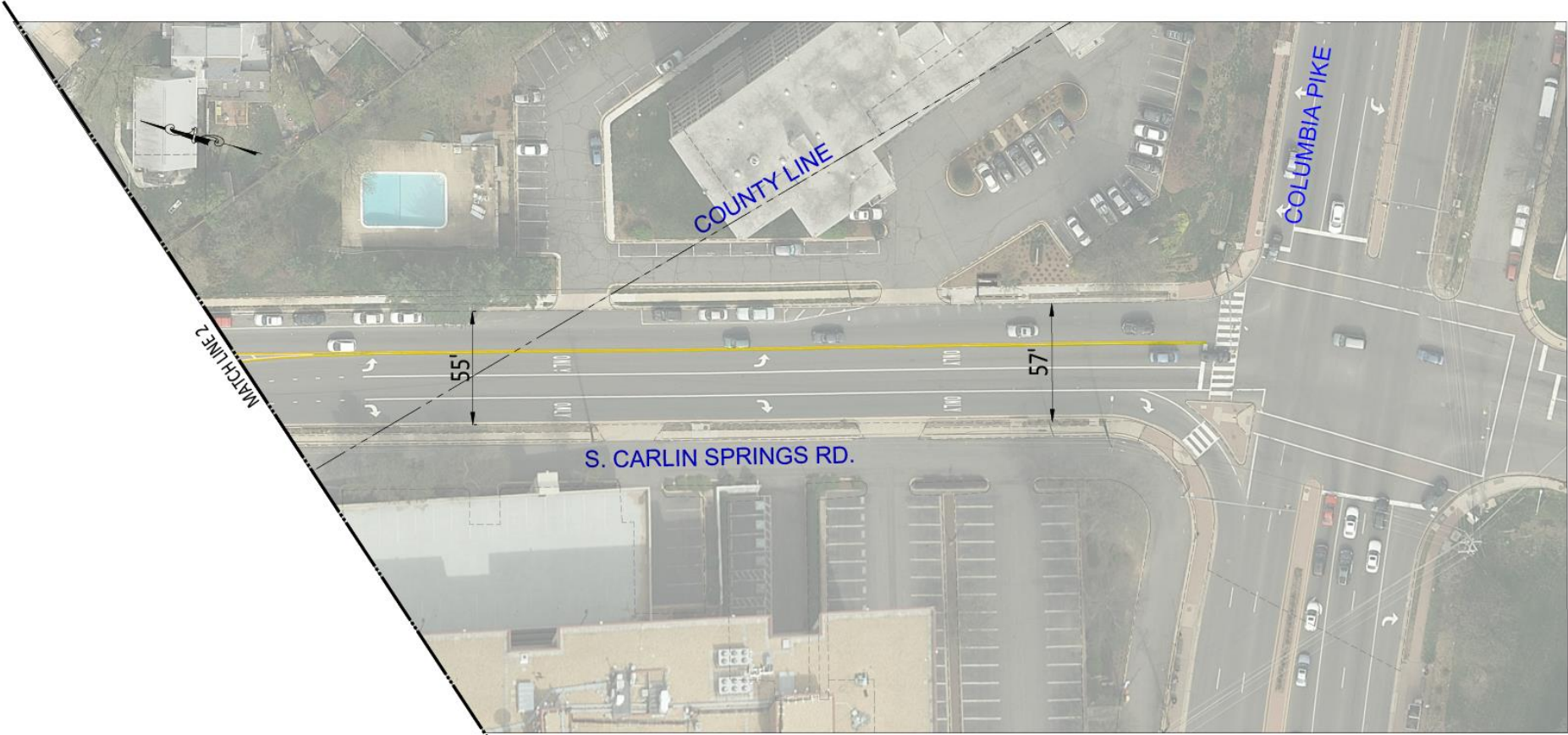
DESIGN TEAM SUPERVISOR _____

CHIEF T.E. & O. BUREAU _____

TRAFFIC SIGNAL ENGINEER _____

DEPARTMENT OF TRANSPORTATION _____

Revisions Date



LEGEND:

PROPOSED PAVEMENT MARKING	
PROPOSED CURB RAMP IMPROVEMENT	
PROPOSED POTENTIAL ISLAND	

Project Name and Location

Concept Plan
 South Carlin Springs Road
 From: 7th Road South
 To: Columbia Pike

Designed: NA
 Drawn: NA
 Checked: DN
 Miss Utility Transmittal #:

Filename: DEL_S_Carlin_Springs_Rd_7th_Rd_S_Columbia_Pike.dwg
 Path: C:\Users\ah\OneDrive\Documents\Projects\Del_S_Carlin_Springs_Rd.dwg
 Plotted: Feb 05, 2018
 Plotted by: nahsan
 Scale: Hor: 1" = 25'