

Pentagon City Metro Station Second Elevator

Transportation Commission

Pentagon City Metro Station Second Elevator



Intersection of S Hayes and S 12th Streets

-  New Elevator
-  Existing Elevator

- **BACKGROUND:** The Pentagon City Metrorail station is one of the highest in terms of ridership among stations in Northern Virginia,.

- Provides access to multiple retail, government, and commercial office buildings, and is a transfer point for regional and local transit buses and numerous private bus services.

- Construction of a new second elevator on the north side of the passageway corresponds to the new second elevator being in the general area of the pedestrian path for people crossing S. Hayes Street.

Pentagon City Metro Station Second Elevator

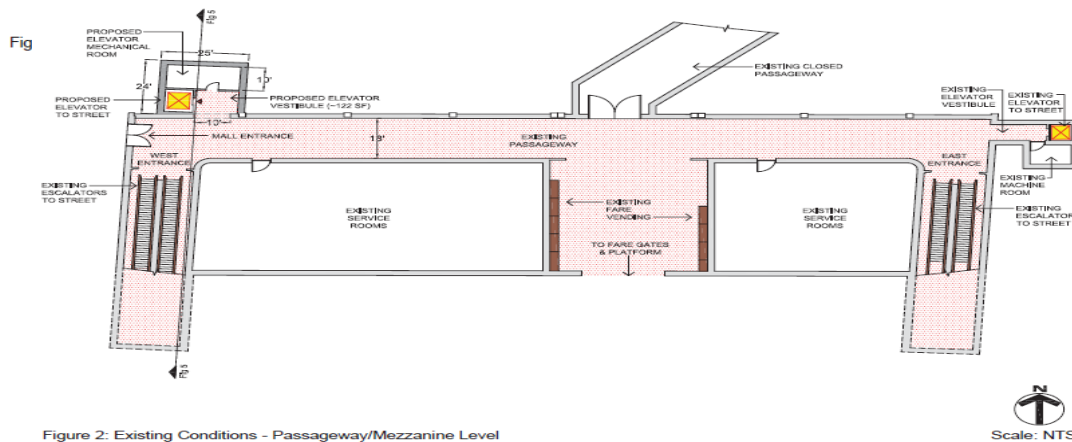
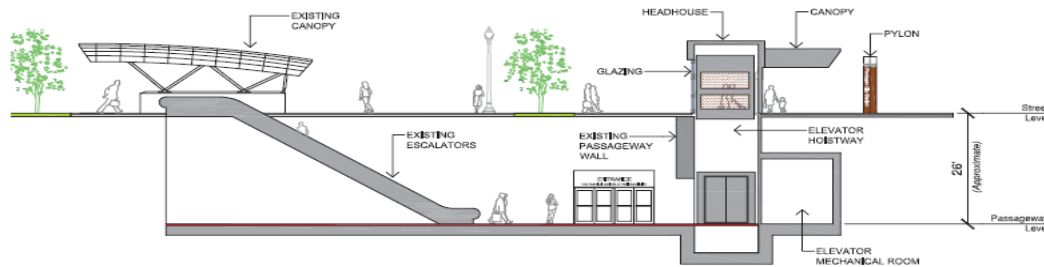


Figure 2: Existing Conditions - Passageway/Mezzanine Level

Project Scope:

- The second elevator will eliminate the need to cross six (6) lanes of traffic, two parking lanes, and a bike lane to reach the elevator on the east side of S. Hayes Street.
- Improves ADA access and access for passengers with strollers and luggage.
- Provide redundancy, in accordance with current WMATA design criteria, when one of the elevators is out of service for any reason.

Pentagon City Metro Station Second Elevator



Construction Phase: On January 25, 2021, Arlington County received two (2) bids

- The low bidder, W.M. Schlosser Company, Inc. was awarded the contract on April 19, 2021 for \$6.4 mil.
- The County and Procon (CM), will work together with the Washington Metropolitan Area Transit Authority (WMATA) to ensure construction is performed in accordance with the approved plans and specifications.
- Project Schedule:
 - Completed Feasibility Study – 2010
 - Completed PE – 2013
 - Design – FY16 to FY20
 - Notice to Proceed – April 29, 2021
 - Prepare submittals and permits for County and WMATA review and approval
 - Construction – Winter 2021 to Spring 2023

Pentagon City Metro Station Second Elevator



PUBLIC ENGAGEMENT:

- *Level of Engagement:* Inform
- The location of the new elevator was determined by the location of the existing station passageway, particularly in the north/south direction.
- *Outreach Methods:* Project Webpage, Discussion with adjacent property owner (Simon Properties)

Pentagon City Metro Station Second Elevator

Thank you!

Questions