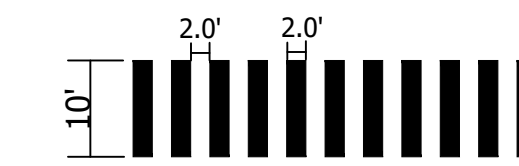


PAVEMENT MARKING NOTES:

- STREET WIDTH MEASUREMENTS ARE FROM FACE OF CURB TO FACE OF CURB. LANES ARE MEASURED FROM CENTER OF MARKING TO CENTER OF MARKING.
- CONTACT DES-TRANSPORTATION ENGINEERING & OPERATIONS CONSTRUCTION MANAGEMENT SPECIALIST OR HIS DESIGNEE AT 703-228-6598 OR 571-437-1077 TO APPROVE MARKING LAYOUT 48 HOURS PRIOR TO INSTALLATION OF MARKINGS.
- PAVEMENT MARKINGS TO BE IN ACCORDANCE WITH THE FOLLOWING AND ANY REVISIONS HERE TO:
 - THE MANUAL ON UNIFORM TRAFFIC CONTROL DEVICES.
 - ARLINGTON COUNTY MARKING STANDARDS.
- ALL MARKINGS SHALL BE THERMOPLASTIC PER ARLINGTON COUNTY MARKING STANDARDS.
- STOP BARS SHALL BE A MINIMUM OF 4' IN ADVANCE OF A MARKED CROSSWALK. IF THERE IS NO MARKED CROSSWALK, STOP BAR SHALL BE NO MORE THAN 30' FROM THE NEAREST EDGE OF THE INTERSECTED TRAVELED WAY.
- CROSSWALKS SHALL BE 10' WIDE UNLESS OTHERWISE NOTED.
- LEFT TURN ARROWS SHALL BE LOCATED 25' BACK FROM STOP BAR. FOR ADDITIONAL ARROWS FOLLOW COUNTY MARKING STANDARDS.
- ON-STREET PARKING LANE IS 7' WIDE (UNLESS OTHERWISE NOTED) AND MARKED WITH 4" WIDE WHITE LINES. BEGINNING AND END OF PARKING SHALL BE MARKED WITH AN END LINE PERPENDICULAR TO CURB EXCEPT AT NUBS OR WHERE OTHERWISE INDICATED.
- SHARED LANE MARKINGS SHALL BE PLACED IN CENTER OF LANE, 250' APART UNLESS OTHERWISE SPECIFIED.
- BIKE LANE SYMBOLS TO BE PLACED 330' APART UNLESS OTHERWISE SPECIFIED.
- EDGE LINES ARE ONLY REQUIRED WHERE SHOWN ON THE PLANS.
- FOR DETAILS SEE ARLINGTON COUNTY PAVEMENT MARKING SPECIFICATION, DETAILS MK-1 TO MK-12

SIGN NOTES:

- FOR ALL SIGN POSTS PLACED IN CONCRETE USE 7 GAUGE HEAVY DUTY ANCHOR (30"x2.50") WITH HARDWARE FOR 2" POST. USE 5/8" CORNER BOLT WITH FLANGED NUT AND 3/8" DRIVER RIVET WITH WASHER.
- CONTACT T&O CONSTRUCTION MANAGER OR HIS DESIGNEE AT 703-228-6598 OR 571-437-1077 48 HRS PRIOR TO POURING CONCRETE. ALTERNATIVE CONTACT AT 703-228-3788 OR 571-414-7497.

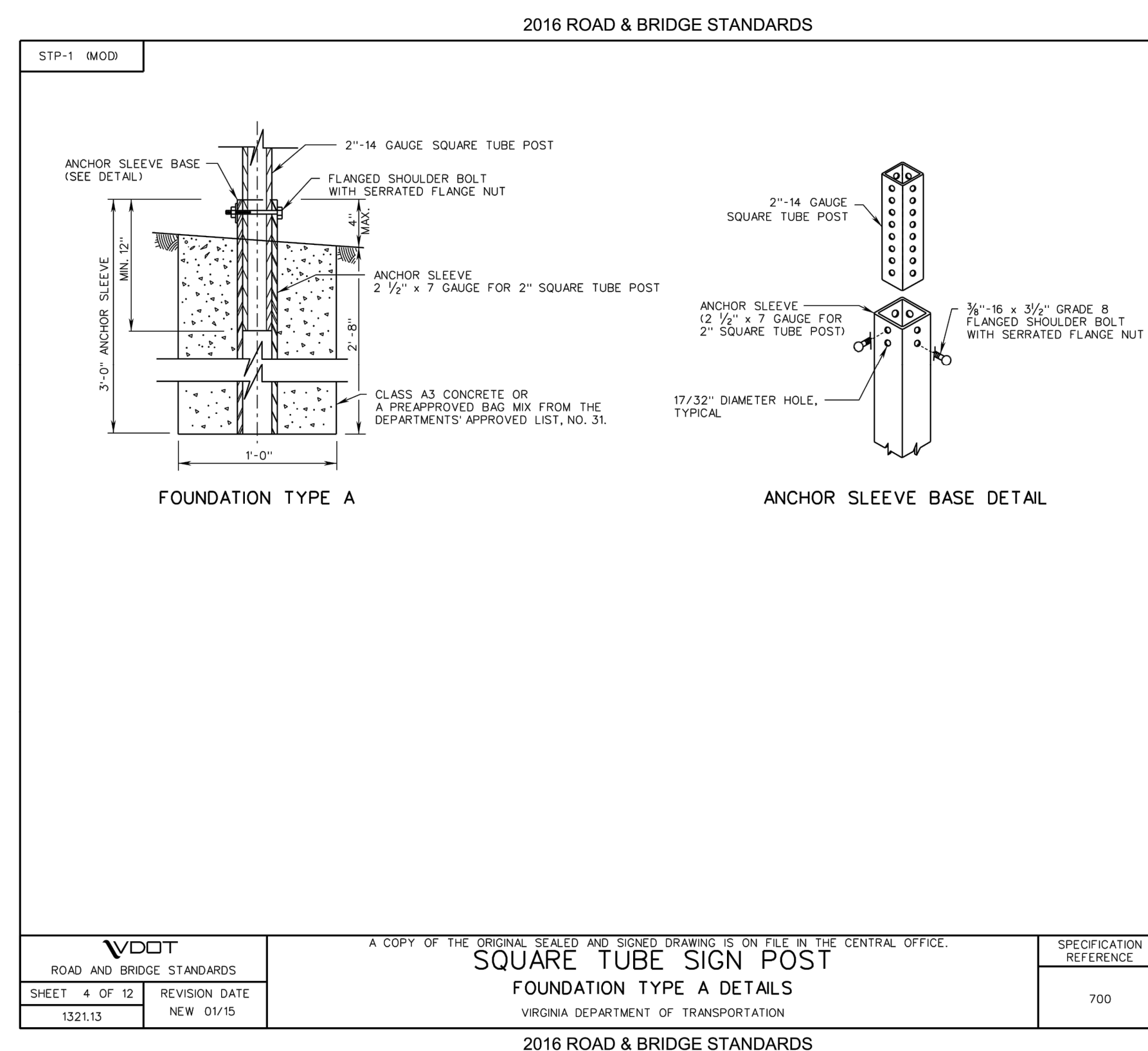


HIGH VISIBILITY CROSSWALK
NOT TO SCALE

LEGEND	
EXISTING	PROPOSED

STANDARD PAVEMENT MARKING LEGEND

(A)	TYPE B CLASS 1	WHITE 4" WIDTH	PARKING LANES, EDGE LINES, LANE LINES
(B)	TYPE B CLASS 1	WHITE 4" WIDTH, 10' LONG, 30' SPACING	DASHED LANE LINES
(C)	TYPE B CLASS 1	WHITE 4" WIDTH, 2' LONG 10' SPACING	LANE TRANSITIONS, TURN LANE SKIPS
(D)	TYPE B CLASS 1	WHITE 18" WIDTH	STOP BARS
(E)	TYPE B CLASS 1	WHITE 24" WIDTH	CONTINENTAL CROSS WALKS, VDOT - STOP BARS
(F)	TYPE B CLASS 1	WHITE 6" WIDTH	TURN LANES, TRANSVERSE CROSS WALKS, BIKE LANES
(G)	TYPE B CLASS 1	YELLOW 4" WIDTH, 10' LONG, 30' SPACING	DIVIDED TRAFFIC, TWO WAY TURN LANES
(H)	TYPE B CLASS 1	YELLOW 4" WIDTH	EDGE LINES
(I)	TYPE B CLASS 1	YELLOW 4" WIDTH, DOUBLE LINE, 4" SPACING	CENTERLINES
(J)	TYPE B CLASS 1	WHITE 6" WIDTH, 10' SPACING @45 DEGREE	HATCH LINES, SAFETY ZONES
(K)	TYPE B CLASS 1	WHITE SINGLE ARROW	TURN LANES
(L)	TYPE B CLASS 1	WHITE COMBINATION ARROW	TURN LANES
(M)	TYPE B CLASS 1	WHITE 8' LETTERS	PAVEMENT LETTERS (STOP, YIELD, BUS, ONLY, etc)
(N)	TYPE B CLASS 1	WHITE 6" WIDTH, 2' LONG, 10' SPACING	LANE TRANSITIONS, TURN LANE SKIPS
(O)	TYPE B CLASS 1	WHITE 12" WIDTH, 20' SPACING @45 DEGREE	GORE MARKINGS
(P)	TYPE B CLASS 1	YELLOW 8" WIDTH @45 DEGREE	GORE MARKINGS
(Q)	TYPE B CLASS 1	WHITE 6" WIDTH, 2' LONG, 4' SPACING	LANE TRANSITIONS
(R)	TYPE B CLASS 1	WHITE 4" WIDTH, DOUBLE LINE, 4" SPACING	CURB EXTENSIONS
(S)	TYPE B CLASS 1	YELLOW 4" WIDTH, 2' LONG, 4' SPACING	LANE TRANSITIONS
(T)	TYPE B CLASS 1	YELLOW 6" WIDTH, 2' LONG, 4' SPACING	LANE TRANSITIONS
(U)	TYPE B CLASS 1	YELLOW 6" WIDTH, 10' SPACING @ 45°	HATCH LINES, SAFETY ZONES
(V)	TYPE B CLASS 1	YELLOW 6" WIDTH, DOUBLE LINE 2' LONG, 4' SPACING	LANE TRANSITIONS, DASHED CENTERLINES



1 of 4

ARLINGTON VIRGINIA
DEPARTMENT OF ENVIRONMENTAL SERVICES
FACILITIES & ENGINEERING DIVISION
ENGINEERING BUREAU
2100 CLARENDON BOULEVARD, SUITE 813
ARLINGTON, VA 22201
PHONE: 703.228.3629
FAX: 703.228.3606

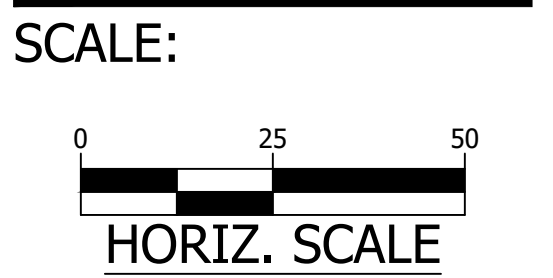
SEAL
COMMONWEALTH OF VIRGINIA
JIONG LIN
Lic. No. 0402051875
07/12/2024
PROFESSIONAL ENGINEER

APPROVALS	DATE
QUALITY CONTROL ENGINEER	
CONSTRUCTION MANAGEMENT SUPERVISOR	
WATER, SEWER, STREETS BUREAU CHIEF	
ENGINEERING BUREAU CHIEF	
PROJECT MANAGER	

REVISIONS	DATE

N CARLIN SPRINGS RD AND N GREENBRIER ST
TSSJ
SIGNING AND PAVEMENT MARKING PLAN

DESIGNED: MT
DRAWN: MT
CHECKED: JL
PLOTTED: JULY 12 2024



C101.1