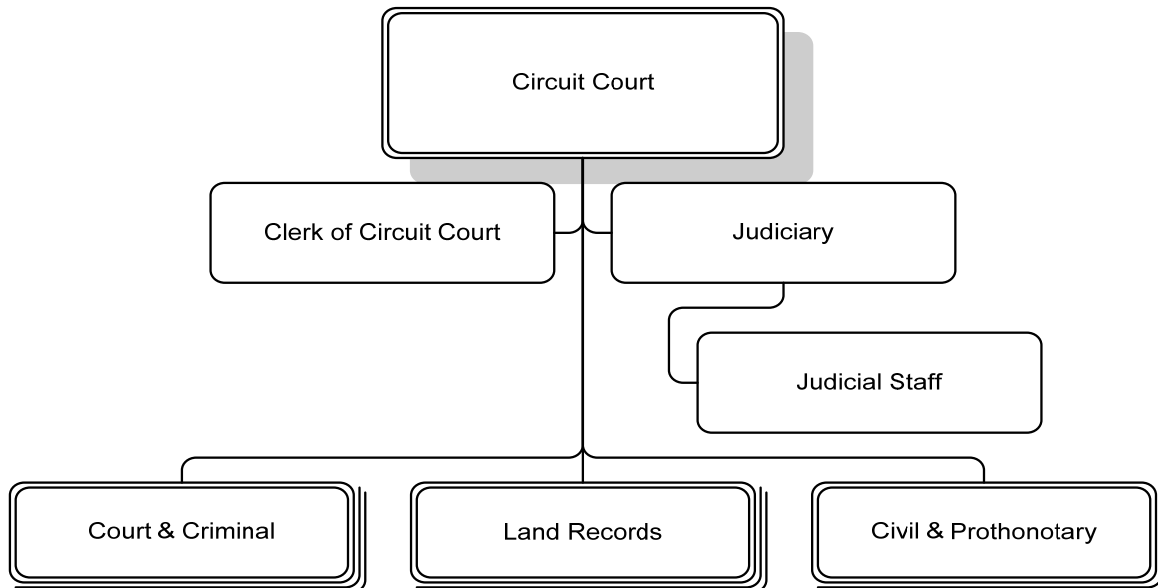


***Our Mission: To administer justice in a fair, timely and efficient manner***

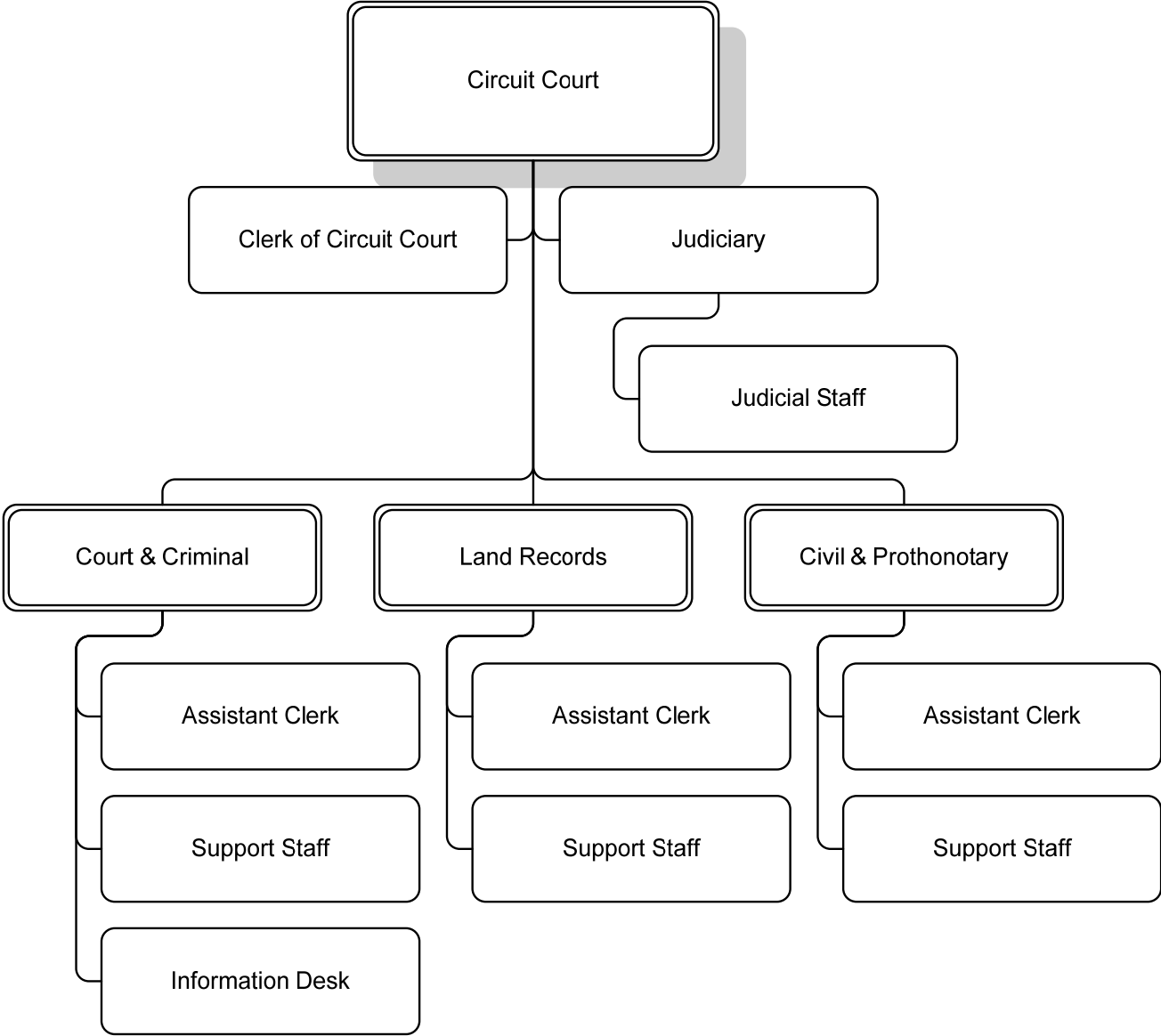
The Circuit Court is the trial court of general jurisdiction, and the highest court in the County for both civil and criminal cases. The Circuit Court, which is comprised of the Judges' Office and the Clerk's Office, also has appellate jurisdiction over all cases from the General District Court and from the Juvenile and Domestic Relations District Court.

- In civil cases, the Circuit Court has concurrent jurisdiction with the General District Court concerning claims from \$3,000 to \$15,000, and exclusive original jurisdiction over claims exceeding \$15,000. The Circuit Court also has jurisdiction over all equity (chancery) matters. These court matters include divorce cases, disputes concerning wills and estates, and disputes involving property.
- In criminal cases, the Circuit Court has jurisdiction over the trial of all felonies (offenses that may be punished by commitment to the state penitentiary) and those misdemeanors (offenses carrying a penalty of not more than 12 months in jail) originally charged in Circuit Court. The Circuit Court also has jurisdiction over juveniles aged 15 years and older who are charged with felonies and whose cases have been certified by a Judge of the Juvenile and Domestic Relations District Court for trial in Circuit Court.
- The Clerk is the administrator of the Court and custodian of all court records. All suits are filed with the Clerk, and the proper taxes and fees are assessed.

**DEPARTMENT DIVISIONS**



DEPARTMENTAL ORGANIZATION CHART



## FY 2009 PRIORITIES

The FY 2009 priorities of the Circuit Court are:

- To continue to automate and maintain the recording, preservation and information retrieval systems using electronic scanning and other innovations to permit off-site information access first for land records, and ultimately for most court records.
- To continue to administer the Court's docket in an efficient and fair manner.

## DEPARTMENT FINANCIAL SUMMARY

	FY 2007 Actual	FY 2008 Revised	FY 2009 Proposed	% Change '08 to '09
Personnel	\$2,319,708	\$2,523,316	\$2,744,782	9%
Non-Personnel	419,311	519,045	518,491	-
<b>Total Expenditures</b>	<b>2,739,019</b>	<b>3,042,361</b>	<b>3,263,273</b>	<b>7%</b>
Fees	2,335,610	3,040,214	2,397,828	-21%
Grants	-	140,000	140,000	-
<b>Total Revenues*</b>	<b>2,335,610</b>	<b>3,180,214</b>	<b>2,537,828</b>	<b>-20%</b>
<b>Net Tax Support</b>	<b>\$403,409</b>	<b>(\$137,853)</b>	<b>\$725,445</b>	<b>626%</b>
Permanent FTEs	33.5	34.05	34.05	
Temporary FTEs	0.3	0.30	0.30	
<b>Total Authorized FTEs</b>	<b>33.8</b>	<b>34.35</b>	<b>34.35</b>	

\*Revenues from Recordation Tax and Grantors' Tax are no longer reflected in the revenue budget.

## SIGNIFICANT BUDGET CHANGES

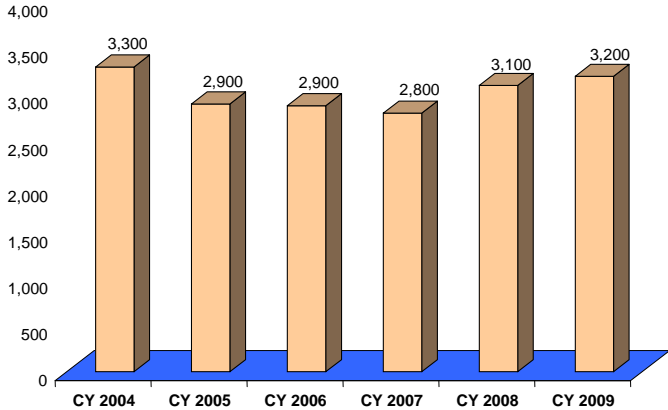
The FY 2009 proposed budget for the Circuit Court is \$3,263,273, a seven percent increase over the FY 2008 revised budget.

- ↑ The FY 2009 proposed budget reflects normal salary increases, an increase in employer retirement contributions to maintain full funding of the retirement fund, and a ten percent increase in employer health insurance rates. It also includes funding for 1.2 over-strength positions (\$122,284).
- ↓ Fee Revenues reflect decreases in Court Excess Fee projections (\$751,888) based on prior year actual revenues, offset by increases in Falls Church reimbursements (\$61,614) and Compensation Board reimbursements (\$47,888).
- Most functions performed by the Clerk carry a fee. A portion of that fee goes to the Clerk for salaries and expenses (for example the fee for a marriage license is \$30.00, \$10.00 of which is "Clerk's fee"). These fees fund the Compensation Board salary and expense budget for the office. Arlington is a big and busy office and collects fees in excess of expenditures. Two thirds of this amount is sent back to Arlington County by the state (by statute).

**PERFORMANCE MEASURES**

Critical Measures	FY 2004 Actual	FY 2005 Actual	FY 2006 Actual	FY 2007 Actual	FY 2008 Estimate	FY 2009 Estimate	FY 2009 Target
Civil cases adjudicated	1,700	1,750	2,200	2,251	2,300	2,400	2,400
Civil cases jury days	80	70	70	80	90	100	100
Criminal cases adjudicated	3,300	2,900	2,900	2,800	3,100	3,200	3,200
Criminal cases jury days	130	110	90	89	100	100	100
Civil cases filed	1,953	2,750	3,000	3,087	3,300	3,400	3,400
Criminal cases filed	3,200	2,600	3,700	3,700	4,000	3,900	3,900
Deeds recorded	54,521	53,140	43,000	40,000	48,000	48,000	48,000

**Criminal Cases Adjudicated**



**Civil Cases Adjudicated**

