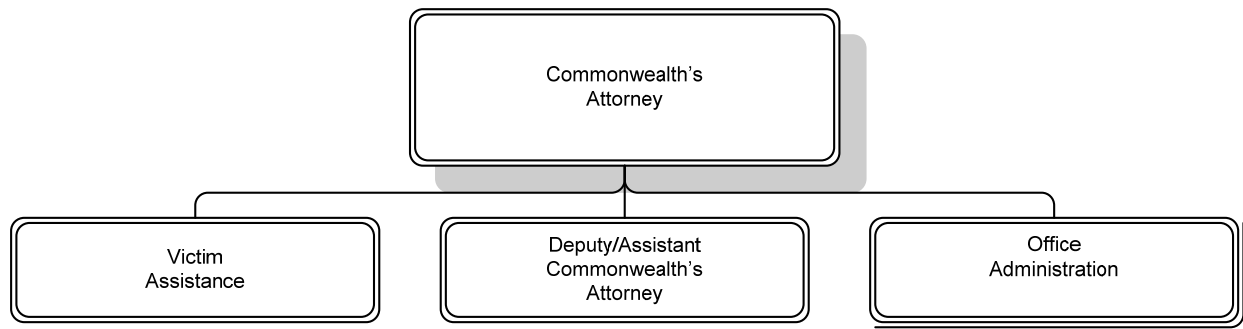


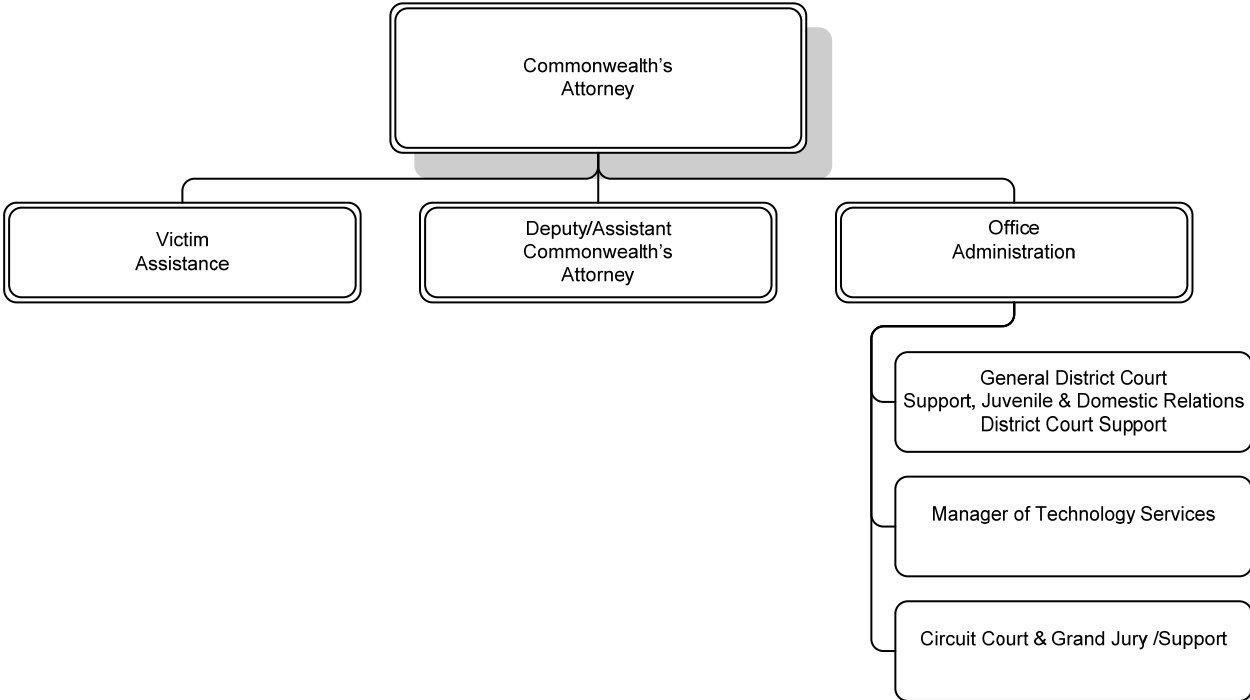
Our Mission: "To see that the innocent go free and the guilty are convicted"

The Commonwealth's Attorney, a Constitutional Officer for the Commonwealth of Virginia, is responsible for the prosecution of all criminal offenses occurring within Arlington County, Ronald Reagan Washington National Airport as well as felony offenses committed within the City of Falls Church. In addition, this function also entails the review of criminal complaints and the rendering of legal assistance to police officers. The Commonwealth's Attorney and Deputies assign and schedule all cases, as well as oversee their evaluation and preparation. The Commonwealth's Attorney, or his Assistants, appears in the General District Court, Juvenile and Domestic Relations District Court and the Circuit Court.

DEPARTMENT DIVISIONS



DEPARTMENTAL ORGANIZATION CHART



FY 2009 PRIORITIES

- To successfully prosecute offenders charged with committing violent crimes with particular emphasis on gang related violent crimes.
- To properly investigate allegations of serious criminal activity through the investigative grand jury.
- To continue to attack the problem of domestic violence through swift and effective prosecution and strong victim support services.
- To assure that the rights of crime victims are recognized and protected.

DEPARTMENT FINANCIAL SUMMARY

	FY 2007 Actual	FY 2008 Revised	FY 2009 Proposed	% Change '08 to '09
Personnel	\$3,312,017	\$3,599,567	\$3,760,848	4%
Non-Personnel	203,395	146,550	146,496	-
Total Expenditures	3,515,412	3,746,117	3,907,344	4%
Fees	35,312	30,124	48,086	60%
Grants	1,546,622	1,375,446	1,437,131	4%
Total Revenues	1,581,934	1,405,570	1,485,217	6%
Net Tax Support	\$1,933,478	\$2,340,547	\$2,422,127	3%
Permanent FTEs	39.5	39.50	39.50	
Temporary FTEs	0.5	0.50	0.50	
Total Authorized FTEs	40.0	40.00	40.00	

SIGNIFICANT BUDGET CHANGES

The FY 2009 proposed budget for the Commonwealth's Attorney is \$3,907,344, or a four percent increase over the FY 2008 revised budget.

- ↑ Personnel expenditures include normal salary increases, an increase in employer retirement contributions to maintain full funding of the retirement fund and a ten percent increase in employer health insurance.
- ↑ Increase in fee revenue is due to higher Falls Church projections (\$17,962) based on reconciliation with FY 2007 actual Falls Church payments and the corresponding expenditures.
- ↑ Increase in grant revenue is due to a four percent increase in Compensation Board salaries effective December, 2007 (\$40,058) and additional funding for the High Intensity Drug Trafficking Area (HIDTA) grant (\$4,568) and Department of Criminal Justice Services Victim Witness grant (\$17,059).

PERFORMANCE MEASURES

Critical Measures	FY 2004 Actual	FY 2005 Actual	FY 2006 Actual	FY 2007 Actual	FY 2008 Estimate	FY 2009 Estimate	FY 2009 Target
Number of indictments terminated without adjudication	107	83	80	62	75	70	60
Number of felony guilty pleas	995	1,238	1,124	1,092	1,200	1,100	1,200
Number of "No True Bills" (grand jury does not issue indictments)	2	4	4	7	5	3	0
Circuit Court: Indictments	1,618	1,345	1,294	1,204	1,300	1,200	1,300
Circuit Court: Misdemeanor appeals	223	356	262	246	300	300	300
Circuit Court: Sentencings	1,134	788	817	790	950	850	900
Circuit Court: Probation revocation	1,010	1,130	1,333	1,384	1,200	1,300	1,300
General District Court: Criminal Cases	6,783	7,023	6,387	5,794	6,800	6,000	6,500
General District Court: Traffic Cases	78,550	76,013	62,373	49,607	68,000	55,000	60,000
Juvenile and Domestic Relations District Court: Juvenile Cases	1,662	1,486	1,523	1,689	1,500	1,600	1,600
Juvenile and Domestic Relations District Court: Adult Misdemeanors	500	447	446	417	500	450	500
Juvenile and Domestic Relations District Court: Adult Felonies	90	81	104	65	100	100	100
Percent of victims receiving services (general and direct)	100%	100%	100%	100%	100%	100%	100%

- In FY 2009, the measures "Percent of victims sent information on basic rights and program service" and "Percent of qualifying victims receiving direct services" were combined to form the "Percent of victims receiving services (general and direct)." In the new measure, general services refer to basic information sent to victims explaining their rights in the criminal justice system and outlining the services offered by the Victim/Witness Program. Direct services refer to a victim receiving basic information and being assigned a Victim Specialist to assist them throughout the criminal proceedings. In FY 2007, 52% of victims received general services and 48% received direct services. The level of services given to a victim is determined by State code.

FUTURE BUDGET CONSIDERATIONS

The following factors may impact the budget in the future:

- A significant increase in equipment expenditures as outdated technology, including computers, servers and printers, require replacement.