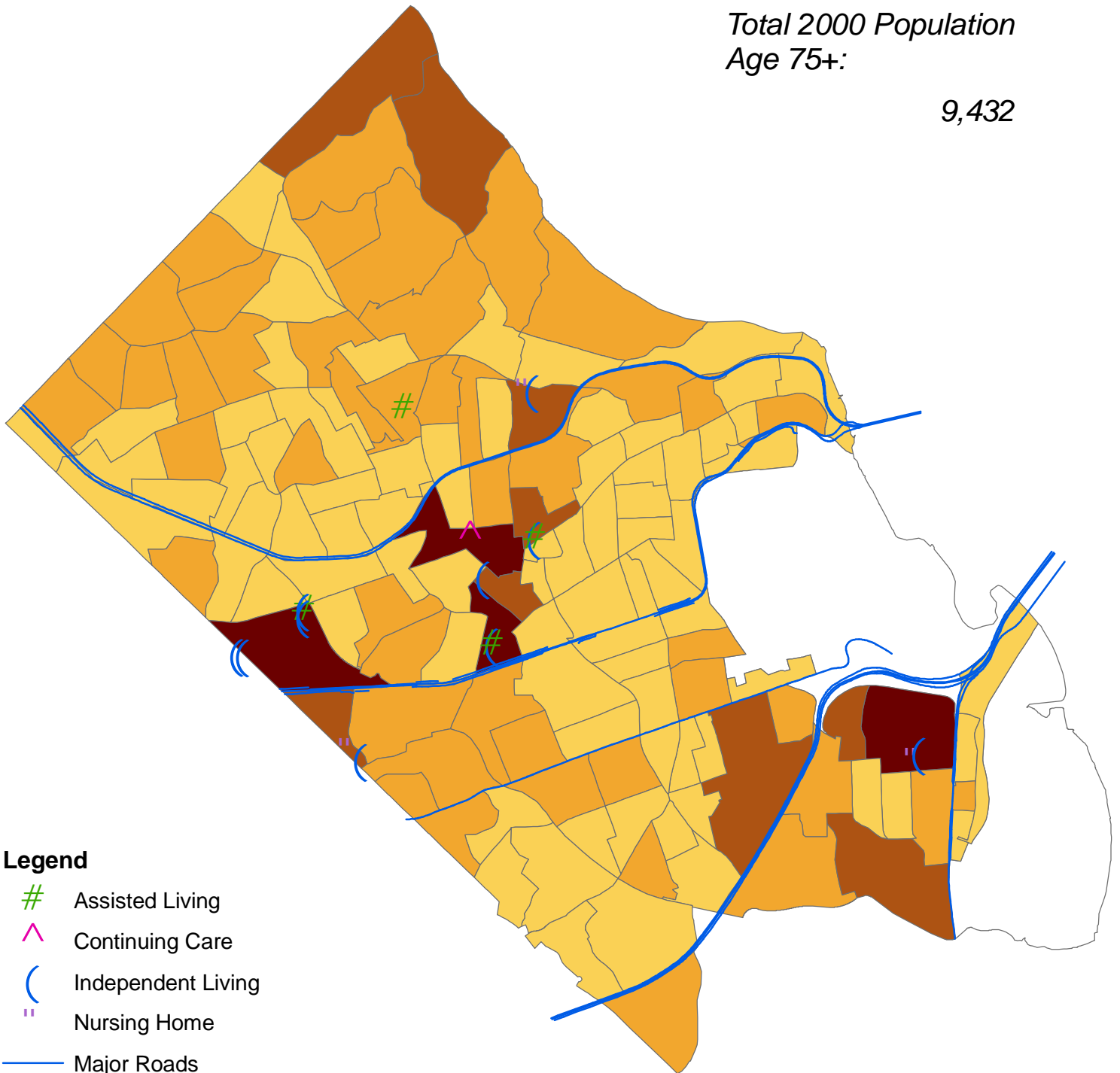


Population 75+ Years of Age, 2000

Arlington, VA

Total 2000 Population
Age 75+:

9,432



Legend

- # Assisted Living
- ^ Continuing Care
- (Independent Living
- " Nursing Home

— Major Roads

Blockgroups 2000

Population, Age 75+

- 0
- 3 - 53
- 57 - 124
- 133 - 247
- 299 - 437

1 Miles



DEPARTMENT OF COMMUNITY PLANNING,
HOUSING AND DEVELOPMENT