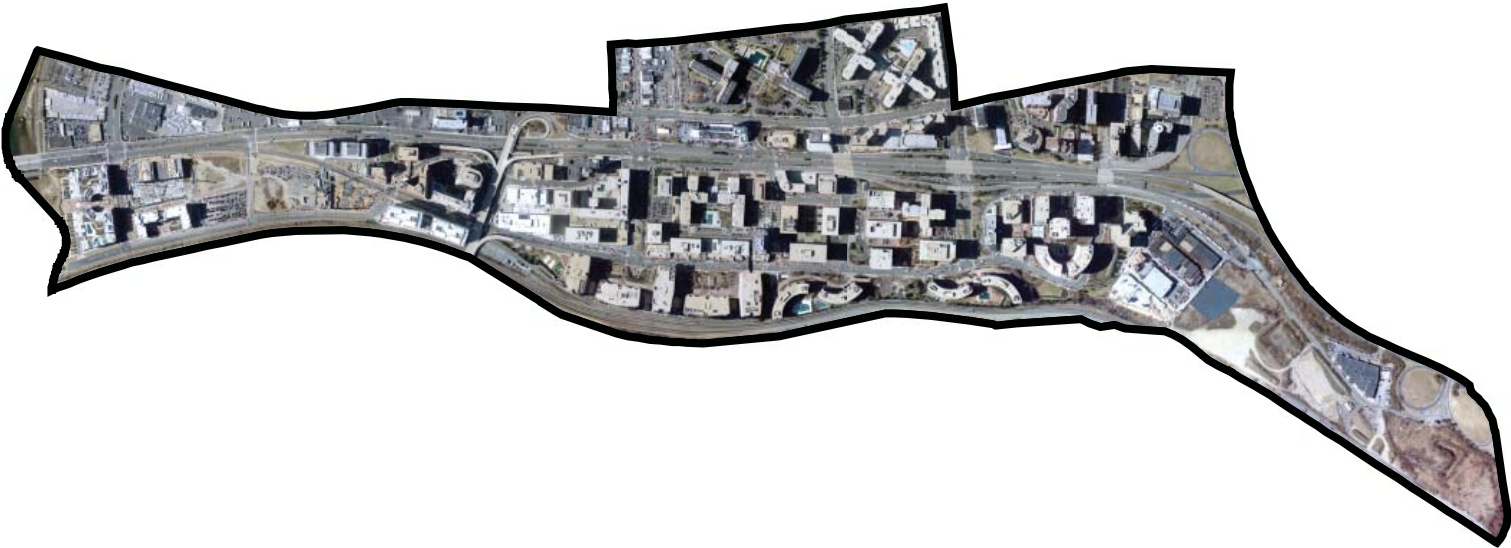
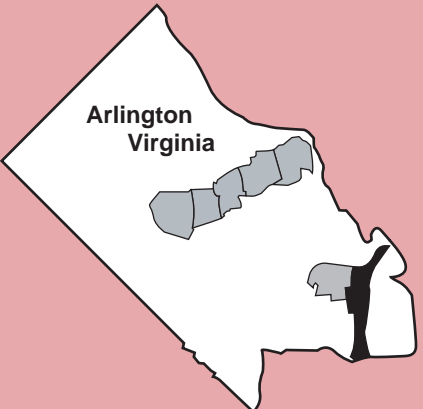


Crystal City



Aerial Photography flown February 2009. The aerial image is © Arlington County GIS Mapping Center.

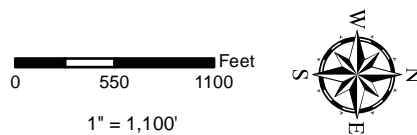




Crystal City

Development Project Locations 1960 - 2011

- 1960 - 1969
- 1970 - 1979
- 1980 - 1989
- 1990 - 1999
- 2000 - 2011
- Under Construction
- ✱ Approved Projects
- Other Projects
- Phased Development Site Plan
- M Metro Station



DEVELOPMENT IN THE METRO CORRIDORS, 1960 - 1st QUARTER 2011
CRYSTAL CITY

Project No.	Project Name Address	Site Plan No. or By- Right	Status	Office GFA (sq. ft.)	Retail GFA (sq. ft.)	Other GFA (sq. ft.)	Residential units	Hotel rooms	Approved Completed	GLUP Designation Zoning District	Site area (sq. ft.)	Parking spaces
A1	Heischman Porche-Audi Inc. 3100 JEFFERSON DAVIS HWY	B-R	C	0	8,640	0	0	0	1970	Service Industry CM	21,950	
A2	The Eclipse on Center Park 3600 S GLEBE RD	346	C	0	80,000	0	465	0	2003 2007	Med Resid. 1/3 & Low OAH 2/3 C-O-1.5	210,453	667
A3	Potomac Yard Land Bay E- West (National Gateway 1 and 2) 3500 S CLARK ST	346	C	368,039	71,427	0	0	0	2007 2010	Med Resid. 1/3 & Low OAH 2/3 C-O-1.5	58,935	684
A4	Camden Potomac Yard 3535 S BALL ST	346	C	0	4,120	0	378	0	2003 2007	Med Resid. 1/3 & Low OAH 2/3 C-O-1.5	72,649	525
A5	Potomac Yard - Land Bay D - West (Brittany West) 3001 JEFFERSON DAVIS HWY	346	A	0	15,868	0	331	0	2007	Med Resid. 1/3 & Low OAH 2/3 C-O-1.5	61,483	438
A6	Potomac Yard - Land Bay D- East (Brittany East) JEFFERSON DAVIS HWY	346	A	0	16,503	0	360	0	2007	Med Resid. 1/3 & Low OAH 2/3 C-O-1.5	66,568	476
A7	Potomac Yard - Land Bay C (National Gateway 3-4-5-6) JEFFERSON DAVIS HWY	346	A	1,064,29 8	41,325	0	0	0	2007	Med Resid. 1/3 & Low OAH 2/3 C-O-1.5	160,545	1,775
A8	Marriott Renaissance Hotel & Residence Inn (Potomac Yard - Land Bay B) 2400 CRYSTAL DR	346	C	0	10,000	0	0	625	2007 2011	Med Resid. 1/3 & Low OAH 2/3 C-O-1.5	85,661	522
A9	One and Two Potomac Yard 2777 CRYSTAL DR	346	C	641,069	8,489	0	0	0	2002 2006	Med Resid. 1/3 & Low OAH 2/3 C-O-1.5	466,094	1,024
A10	Potomac Gateway South Office 2900 CRYSTAL DR	189	C	169,784	0	0	0	0	1982 1990	Medium Office-Apartment-Hotel C-O-2.5	68,142	402
A11	Potomac Gateway North Bldg. 2800 CRYSTAL DR	189	C	169,784	0	0	0	0	1982 1990	High Office-Apartment-Hotel C-O	44,680	402
A12	Marriott Courtyard Crystal City 2899 27 St S	189	C	0	0	0	0	272	1982 1990	High Office-Apartment-Hotel C-O	43,500	194
A13	Holiday Inn, National Airport 2650 JEFFERSON DAVIS HWY	74	C	0	0	0	0	280	1970 1973	High Office-Apartment-Hotel RA-H-3.2	54,280	408

DEVELOPMENT IN THE METRO CORRIDORS, 1960 - 1st QUARTER 2011
CRYSTAL CITY

Project No.	Project Name Address	Site Plan No. or By- Right	Status	Office GFA (sq. ft.)	Retail GFA (sq. ft.)	Other GFA (sq. ft.)	Residential units	Hotel rooms	Approved Completed	GLUP Designation Zoning District	Site area (sq. ft.)	Parking spaces
A14	McDonald's 2620 JEFFERSON DAVIS HWY	B-R	C	0	5,506	0	0	0	1986	High Office-Apartment-Hotel CM	27,806	
A15	2600 Jefferson Davis Hwy 2600 JEFFERSON DAVIS HWY	B-R	C	0	2,250	0	0	0	1966	High Office-Apartment-Hotel CM	28,730	
A16	Airport Plaza I 2711 JEFFERSON DAVIS HWY	121	C	141,541	2,601	0	0	0	1979 1981	High Office-Apartment-Hotel C-O	38,740	750
A17	Hyatt Regency Crystal City 2799 JEFFERSON DAVIS HWY	121	C	0	0	0	0	685	1979 1982	High Office-Apartment-Hotel C-O	97,349	*
A18	The Concord 2600 CRYSTAL DR	145	C	0	5,100	0	412	0	1981 2007	High Office-Apartment-Hotel C-O	143,471	*
A19	Airport Plaza IV 2600 CRYSTAL DR	145	A	0	0	0	198	0	1981	High Office-Apartment-Hotel C-O	*	*
A20	Airport Plaza II 2611 JEFFERSON DAVIS HWY	145	C	211,602	1,766	0	0	0	1979 1984	High Office-Apartment-Hotel C-O	57,579	980
B1	CVS Pharmacy 2400 JEFFERSON DAVIS HWY	B-R	C	0	10,522	0	0	0	1998 2000	High Office-Apartment-Hotel C-2	35,564	41
B2	Presidential Towers 2511 JEFFERSON DAVIS HWY	65	C	346,552	0	0	0	0	1968 1970	High Office-Apartment-Hotel C-O	11,190	4,311
B3	Polk & Taylor Bldg. 2521 S CLARK ST	65	C	353,129	9,029	0	0	0	1968 1970	High Office-Apartment-Hotel C-O	727,545	*
B4	Hilton Hotel 2399 JEFFERSON DAVIS HWY	65	C	0	0	0	0	386	1968 1975	High Office-Apartment-Hotel C-O	*	*
B5	Century II 2461 S CLARK ST	65	C	225,040	49,038	0	0	0	1968 1973	High Office-Apartment-Hotel C-O	*	*
B6	Buchanan Apartments 320 23RD ST S	65	C	0	53,549	0	442	0	1968 1972	High Office-Apartment-Hotel C-O	*	*
B7	Taylor Building 2530 CRYSTAL DRIVE	65	C	468,897	55,492	0	0	0	1968 1979	High Office-Apartment-Hotel C-O	*	*

DEVELOPMENT IN THE METRO CORRIDORS, 1960 - 1st QUARTER 2011
CRYSTAL CITY

Project No.	Project Name Address	Site Plan No. or By- Right	Status	Office GFA (sq. ft.)	Retail GFA (sq. ft.)	Other GFA (sq. ft.)	Residential units	Hotel rooms	Approved Completed	GLUP Designation Zoning District	Site area (sq. ft.)	Parking spaces
B8	Century I and Shops at Century Building 2450 CRYSTAL DR	65	C	304,905	16,309	0	0	0	1968 1976	High Office-Apartment-Hotel C-O	*	*
B9	Century Center (Century I and II Site Plan Amendment) 2461 S CLARK ST	65	C	0	8,868	0	0	0	2005 2008	High Office-Apartment-Hotel C-O	*	100
B10	Pt of Century Bldg. (Pierce) 2351 JEFFERSON DAVIS HWY	65	C	0	48,426	0	0	0	1976	High Office-Apartment-Hotel C-O	*	*
B11	Crystal City Sports Pub 529 23RD ST S	B-R	C	0	6,750	0	0	0	1963	Service Commercial C-2	4,500	
B12	Crystal House 2000 S EADS ST	B-R	C	0	6,650	0	828	0	1965	Medium Residential RA6-15	738,150	889
B13	Lofts at Crystal Houses 1900 S EADS ST	13	A	0	0	0	252	0	2006	Medium Residential RA6-15	*	322
B14	BB&T Bank 2221 S EADS ST	B-R	C	0	2,350	0	0	0	1979	High Office-Apartment-Hotel C-2	27,629	
B15	Radisson Hotel 2000 JEFFERSON DAVIS HWY	55	C	0	0	0	0	245	1968	High Office-Apartment-Hotel RA-H-3.2	81,270	330
B16	Hampton Inn 2000 JEFFERSON DAVIS HWY	55	C	0	0	0	0	161	1999 2002	High Office-Apartment-Hotel RA-H-3.2	24,396	451
B17	Consumer Electronics Assoc. 1919 S EADS ST	258	C	99,360	0	0	0	0	1990	High Office-Apartment-Hotel C-2	66,350	347
B18	Sheraton Crystal City 1800 JEFFERSON DAVIS HWY	78	C	0	0	0	0	217	1979 1983	High Office-Apartment-Hotel RA-H-3.2	40,796	142
B19	Crystal Plaza: Office Bldg. 6 2221 S CLARK ST	11	C	151,697	11,803	0	0	0	1963 1965	High Office-Apartment-Hotel C-O	709,892	1,708
B20	Crystal Plaza: Apt. #2 (S) 2111 JEFFERSON DAVIS HWY	11	C	0	12,736	0	270	0	1963 1966	High Office-Apartment-Hotel RA4.8	*	*
B21	Crystal Plaza: Apt. #1 (N) 2101 JEFFERSON DAVIS HIGHWAY	11	C	0	7,125	0	270	0	1963 1967	High Office-Apartment-Hotel RA4.8	*	*

DEVELOPMENT IN THE METRO CORRIDORS, 1960 - 1st QUARTER 2011
CRYSTAL CITY

Project No.	Project Name Address	Site Plan No. or By- Right	Status	Office GFA (sq. ft.)	Retail GFA (sq. ft.)	Other GFA (sq. ft.)	Residential units	Hotel rooms	Approved Completed	GLUP Designation Zoning District	Site area (sq. ft.)	Parking spaces
B22	Crystal Plaza: Office Bldg. 1 2001 S CLARK ST	11	C	164,615	8,568	0	0	0	1963 1969	High Office-Apartment-Hotel C-O	*	*
B23	Crystal Plaza: Office Bldg. 5 223 23RD ST S	11	C	155,100	0	0	0	0	1963 1966	High Office-Apartment-Hotel C-O	*	*
B24	Crystal Plaza: Office Bldg. 4 2200 CRYSTAL DR	11	C	266,955	18,652	1,945	0	0	1963 1967	High Office-Apartment-Hotel C-O	*	*
B25	Crystal Plaza: Office Bldg. 3 2100 CRYSTAL DR	11	C	268,687	45,150	0	0	0	1963 1968	High Office-Apartment-Hotel C-O	*	*
B26	Crystal City Retail - Phase I 2010 CRYSTAL DR	11/56	C	0	65,444	0	0	0	2001 2005	High Office-Apartment-Hotel C-O	*	*
B27	220 20th Street (formerly Crystal Plaza 2) 220 20TH ST S	11	C	0	1,563	0	266	0	2006 2009	High Office-Apartment-Hotel C-O	75,682	293
B28	Marriott Hotel 1999 JEFFERSON DAVIS HWY	56	C	0	0	0	0	345	1967 1970	High Office-Apartment-Hotel C-O	75,293	*
B29	Crystal Mall: Office Bldg. 1 1800 S BELL ST	56	C	180,777	44,452	0	0	0	1967 1969	High Office-Apartment-Hotel C-O	371,318	1,862
B30	Crystal Mall: Office Bldg. 4 1901 S BELL ST	56	C	258,544	13,760	0	0	0	1967 1969	High Office-Apartment-Hotel C-O	*	*
B31	Crystal Mall: Office Bldg. 2 1801 S BELL ST	56	C	267,327	13,760	0	0	0	1967 1969	High Office-Apartment-Hotel C-O	*	*
B32	Crystal Mall: Basement & Mechanical 1911 JEFFERSON DAVIS HWY	56	C	107,000	0	0	0	0	1969	High Office-Apartment-Hotel C-O	*	*
B33	Crystal Mall: Office Bldg. 3 1851 S BELL ST	56	C	367,568	13,760	0	0	0	1967 1969	High Office-Apartment-Hotel C-O	*	*
B34	Crystal City Retail - Phase II 2010 CRYSTAL DR	11/56	A	84,034	92,920	0	0	0	2001	High Office-Apartment-Hotel C-O	*	*
B35	Crystal Park Office Bldg. 5 2451 CRYSTAL DR	167	C	384,900	0	11,000	0	0	1989	Low Office-Apartment-Hotel C-O-1.5	2,174,005	4,583
B36	Crystal Park Office Bldg. 4 2345 CRYSTAL DR	167	C	507,424	0	0	0	0	1988	Low Office-Apartment-Hotel C-O-1.5	*	*
B37	Crystal Park Office Bldg. 3 2231 CRYSTAL DR	167	C	394,660	59,520	0	0	0	1987	Low Office-Apartment-Hotel C-O-1.5	*	*

DEVELOPMENT IN THE METRO CORRIDORS, 1960 - 1st QUARTER 2011
CRYSTAL CITY

Project No.	Project Name Address	Site Plan No. or By- Right	Status	Office GFA (sq. ft.)	Retail GFA (sq. ft.)	Other GFA (sq. ft.)	Residential units	Hotel rooms	Approved Completed	GLUP Designation Zoning District	Site area (sq. ft.)	Parking spaces
B38	Crystal Park Office Bldg. 2 2121 CRYSTAL DR	167	C	486,500	0	0	0	0	1986	Low Office-Apartment-Hotel C-O-1.5	*	*
B39	Crystal Park Office Bldg. 1 2011 CRYSTAL DR	167	C	464,120	3,380	0	0	0	1980 1985	Low Office-Apartment-Hotel C-O-1.5	*	*
B40	Crystal Park Condo I 1805 CRYSTAL DR	167	C	0	0	0	179	0	1980 1985	Low Office-Apartment-Hotel C-O-1.5	*	*
B41	Crystal Park Residential Bldg. #2 1801 CRYSTAL DR	167	C	0	0	0	181	0	1987	Low Office-Apartment-Hotel C-O-1.5	*	*
B42	Water Park Towers South 1505 CRYSTAL DR	167	C	0	0	0	181	0	1988	Low Office-Apartment-Hotel C-O-1.5	*	*
B43	Water Park Towers North 1501 CRYSTAL DR	167	C	0	0	0	181	0	1989	Low Office-Apartment-Hotel C-O-1.5	*	*
C1	Eads Post Office 1720 S EADS ST	B-R	C	0	8,215	0	0	0	1969	High-Medium Residential CM	34,186	12
C2	Crystal Towers: North Apts. 1600 S EADS ST	13	C	600	4,995	0	458	0	1965 1967	High-Medium Residential RA4.8	563,449	919
C3	Crystal Towers: South Apts. 1600 S EADS ST	13	C	600	4,994	0	454	0	1965 1968	High-Medium Residential RA4.8	*	*
C4	Lofts 590 at Crystal Towers 590 15TH ST S	13	C	0	0	0	215	0	2002 2005	High-Medium Residential RA4.8	*	285
C5	Marriott Hotel 1700 JEFFERSON DAVIS HWY	144	C	0	0	0	0	450	1969 1982	High Office-Apartment-Hotel RA-H-3.2	100,012	780
C6	Marriott Hotel (expansion) 1700 JEFFERSON DAVIS HWY	144	C	0	0	0	0	247	1984 1987	High Office-Apartment-Hotel RA-H-3.2	46,553	*
C7	Gateway Place Apts. 400 15TH ST S	144	C	0	0	0	162	0	1984 1987	High Office-Apartment-Hotel RA-H-3.2	40,786	*
C8	Crystal Square: Office Bldg. 5 251 18th St S	90	C	261,585	54,425	0	0	0	1972 1974	High Office-Apartment-Hotel C-O	100,000	1,899
C9	Crystal Square: Office Bldg. 4 241 18TH ST S	90	C	318,132	35,300	0	0	0	1972 1977	High Office-Apartment-Hotel C-O	80,801	*

DEVELOPMENT IN THE METRO CORRIDORS, 1960 - 1st QUARTER 2011
CRYSTAL CITY

Project No.	Project Name Address	Site Plan No. or By- Right	Status	Office GFA (sq. ft.)	Retail GFA (sq. ft.)	Other GFA (sq. ft.)	Residential units	Hotel rooms	Approved Completed	GLUP Designation Zoning District	Site area (sq. ft.)	Parking spaces
C10	Crystal Square: Office Bldg. 3 1750 Crystal Dr	90	C	220,231	19,229	0	0	0	1972 1979	High Office-Apartment-Hotel C-O	97,601	*
C11	Crystal Square: Apts. 1515 JEFFERSON DAVIS HWY	90	C	0	0	0	378	0	1972 1975	High Office-Apartment-Hotel C-O	196,771	*
C12	Crystal Square: Office Bldg. 2 1550 CRYSTAL DR	90	C	450,388	41,941	0	0	0	1972 1980	High Office-Apartment-Hotel C-O	160,829	*
C13	Crystal Square: Office Bldg. 2 Amendment 1550 CRYSTAL DR	90	C	7,100	0	0	0	0	2002 2004	High Office-Apartment-Hotel C-O	*	*
C14	The Hampton 1425 S EADS ST	115	C	0	7,007	0	135	0	1981 1983	High Office-Apartment-Hotel RA-H-3.2	35,800	167
C15	Americana Motel 1460 JEFFERSON DAVIS HWY	B-R	C	0	0	0	0	102	1963	High Office-Apartment-Hotel RA-H-3.2	61,473	100
C16	Warwick House II 1331 S EADS ST	168	C	0	0	0	243	0	1999 2002	High Office-Apartment-Hotel RA-H-3.2	44,182	225
C17	Embassy Suites 1300 JEFFERSON DAVIS HWY	168/33 7	C	0	0	0	0	267	1983 1985	High Office-Apartment-Hotel RA-H-3.2	108,417	207
C18	Warwick House I 1221 S EADS ST	160	C	0	0	0	321	0	1988 2000	High Office-Apartment-Hotel RA-H-3.2	67,106	323
C19	Bella Vista I 1211 S EADS ST	160	C	0	0	0	202	0	1982 1989	High Office-Apartment-Hotel RA-H-3.2	123,287	319
C20	The Bennington 1201 S EADS ST	110	C	0	4,656	0	348	0	1976 1981	High Office-Apartment-Hotel RA-H-3.2	112,348	350
C21	Jefferson Plaza: Office Bldg. 2 1421 JEFFERSON DAVIS HWY	51	C	267,092	3,818	0	0	0	1966 1970	High Office-Apartment-Hotel C-O	101,391	*
C22	Crowne Plaza Washington National Airport 1480 CRYSTAL DR	51	C	0	19,958	0	0	308	1966 1969	High Office-Apartment-Hotel C-O	97,826	952

DEVELOPMENT IN THE METRO CORRIDORS, 1960 - 1st QUARTER 2011
CRYSTAL CITY

Project No.	Project Name Address	Site Plan No. or By- Right	Status	Office GFA (sq. ft.)	Retail GFA (sq. ft.)	Other GFA (sq. ft.)	Residential units	Hotel rooms	Approved Completed	GLUP Designation Zoning District	Site area (sq. ft.)	Parking spaces
C23	Jefferson Plaza: Office Bldg. 1 1411 JEFFERSON DAVIS HWY	51	C	270,659	5,150	0	0	0	1966 1970	High Office-Apartment-Hotel C-O	58,232	*
C24	Crystal Gateway: Office Bldg. 1 1235 S CLARK ST	135	C	320,717	44,011	0	0	0	1979 1981	High Office-Apartment-Hotel C-O	422,066	2,205
C25	Crystal Gateway: Office Bldg. 2 1225 S CLARK ST	135	C	290,771	14,104	0	0	0	1979 1982	High Office-Apartment-Hotel C-O	*	*
C26	Crystal Gateway Condo 1300 CRYSTAL DR	135	C	0	0	0	174	0	1987	High Office-Apartment-Hotel C-O	*	*
C27	Waterford House 1200 CRYSTAL DR	135	C	0	0	0	65	0	1987	High Office-Apartment-Hotel C-O	*	*
C28	Crystal Gateway: Office Bldg. 4 200 12 ST S	135	C	227,100	0	0	0	0	1984 1987	High Office-Apartment-Hotel C-O	*	*
C29	Crystal Gateway: Office Bldg. 3 1215 S CLARK ST	135	C	347,878	2,550	0	0	0	1979 1983	High Office-Apartment-Hotel C-O	*	*
C30	Lenox Club 401 12TH ST S	268	C	0	4,545	0	385	0	1991	High Office-Apartment-Hotel RA-H-3.2	68,946	391
C31	Doubletree Hotel 300 ARMY NAVY DR	82	C	0	6,112	0	0	631	1970 1973	High Office-Apartment-Hotel C-O	118,916	520
C32	400 Army Navy Drive 400 ARMY NAVY DR	2	C	253,723	0	0	0	0	1961 1964	High Office-Apartment-Hotel C-O	71,861	425
C33	Crystal Gateway North 201 12TH ST S	229	C	379,760	0	0	0	0	1985 1987	Low Office-Apartment-Hotel C-O-1.5	121,208	965
C34	North Tract Lofts (formerly Aster at Crystal City) 305 10TH ST S	390	C	0	0	0	184	0	2005 2010	Low Office-Apartment-Hotel C-O-1.5	92,727	272
C35	Monument View Office 608 S BALL ST	400	A	323,299	3,512	0	0	0	2008	Low Office-Apartment-Hotel C-O-1.5	204,966	591
C36	Monument View Residential 320 6TH ST S	400	A	0	0	0	352	0	2008	Low Office-Apartment-Hotel C-O-1.5	*	384

DEVELOPMENT IN THE METRO CORRIDORS, 1960 - 1st QUARTER 2011
CRYSTAL CITY

Project No.	Project Name Address	Site Plan No. or By-Right	Status	Office GFA (sq. ft.)	Retail GFA (sq. ft.)	Other GFA (sq. ft.)	Residential units	Hotel rooms	Approved Completed	GLUP Designation Zoning District	Site area (sq. ft.)	Parking spaces
-------------	----------------------	---------------------------	--------	----------------------	----------------------	---------------------	-------------------	-------------	--------------------	----------------------------------	---------------------	----------------

N/A = Not Applicable

B-R = By-Right (i.e., not a Site Plan project); PROF = Proffer; CP-FBC = Columbia Pike Form Based Code; URD = Unified Residential Development; UCMUD = Unified Commercial/Mixed Use Development

* Parking spaces and/or site area data for this project is recorded with a related project.

Data are as of March 2005. Please see the Appendix for descriptions of codes and terms used in the table.