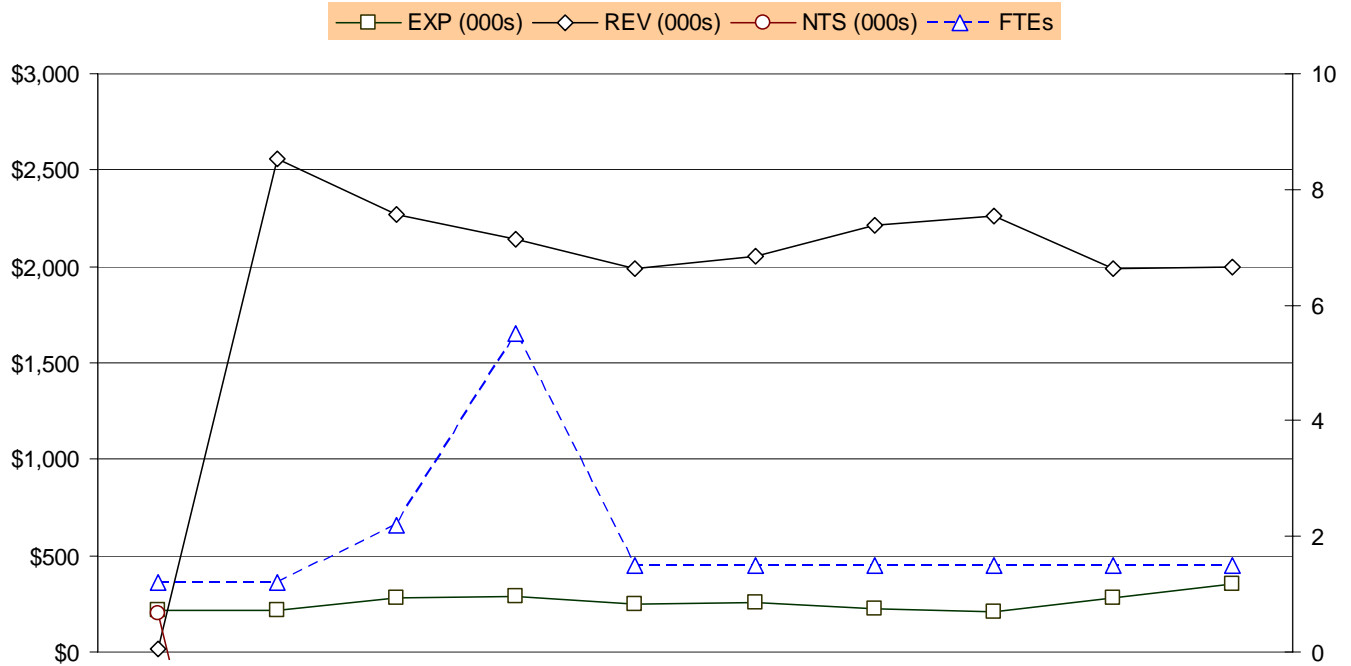


**GENERAL DISTRICT COURT
TEN-YEAR HISTORY**

EXPENDITURE, REVENUE, NET TAX SUPPORT AND FULL-TIME EQUIVALENT TRENDS



	FY 1998	FY 1999	FY 2000	FY 2001	FY 2002	FY 2003	FY 2004	FY 2005	ADOPTED FY 2006	PROPOSED FY 2007
EXP (000s)	\$218	\$219	\$284	\$288	\$250	\$259	\$228	\$209	\$280	\$356
REV (000s)	\$19	\$2,562	\$2,274	\$2,141	\$1,988	\$2,052	\$2,211	\$2,265	\$1,990	\$1,996
NTS (000s)	\$199	-\$2,343	-\$1,990	-\$1,853	-\$1,739	-\$1,793	-\$1,982	-\$2,056	-\$1,709	-\$1,640
FTEs	1.2	1.2	2.2	5.5	1.5	1.5	1.5	1.5	1.5	1.5

Note: Prior to FY 1999, revenue generated by the General District Court was accounted for in Circuit Court revenue.

GENERAL DISTRICT COURT
TEN-YEAR HISTORY

Fiscal Year	Description	FTEs
FY 1998	<ul style="list-style-type: none"> ▪ Added an Administrative Assistant position (0.2 FTE, \$6,500) in Judges Office for relief coverage. 	0.2
FY 1999	<ul style="list-style-type: none"> ▪ Prior to FY 1999, revenue generated by the General District Court was accounted for in Circuit Court revenue. Increased revenue estimates for court cases and fines based on the number of traffic court cases. 	
FY 2000	<ul style="list-style-type: none"> ▪ Added \$61,652 and 1.0 FTE to start the Community Corrections Unit. 	1.0
FY 2001	<ul style="list-style-type: none"> ▪ Added \$193,853 and 3.0 FTEs to provide full year funding for the Community Corrections Unit. ▪ Added \$15,000 and 0.3 FTE due to the increased workload in the Clerk's Office for the Photo Red Light Program. ▪ Decreased fee revenue \$200,000 to present a more accurate fine revenue. 	3.0 0.3
FY 2002	<ul style="list-style-type: none"> ▪ Transferred the Community Corrections Unit to the County Manager's Office on June 17, 2001 (\$260,273, \$155,000 grant revenue, 4.0 FTEs). 	(4.0)
FY 2003	<ul style="list-style-type: none"> ▪ Decreased fee revenue \$300,000 to present a more accurate fine revenue. 	
FY 2004	<ul style="list-style-type: none"> ▪ Decreased fee revenue \$220,000 to present a more accurate fine revenue. 	
FY 2005	<ul style="list-style-type: none"> ▪ No significant changes. 	
FY 2006	<ul style="list-style-type: none"> ▪ No significant changes. 	