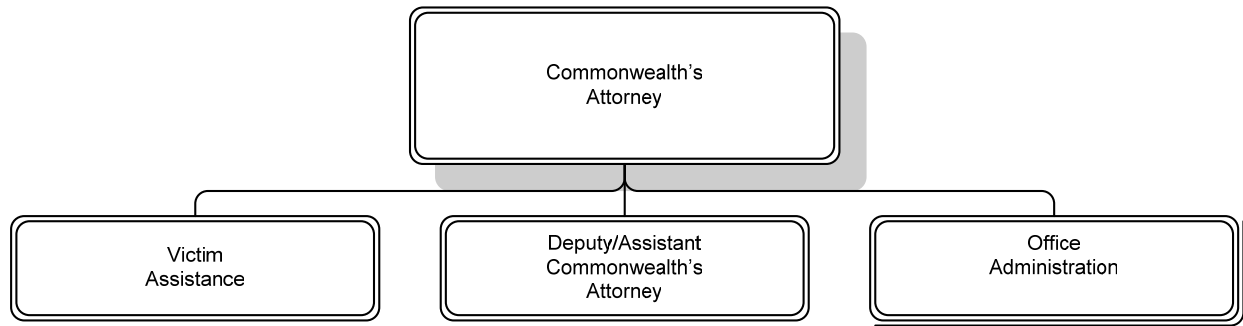


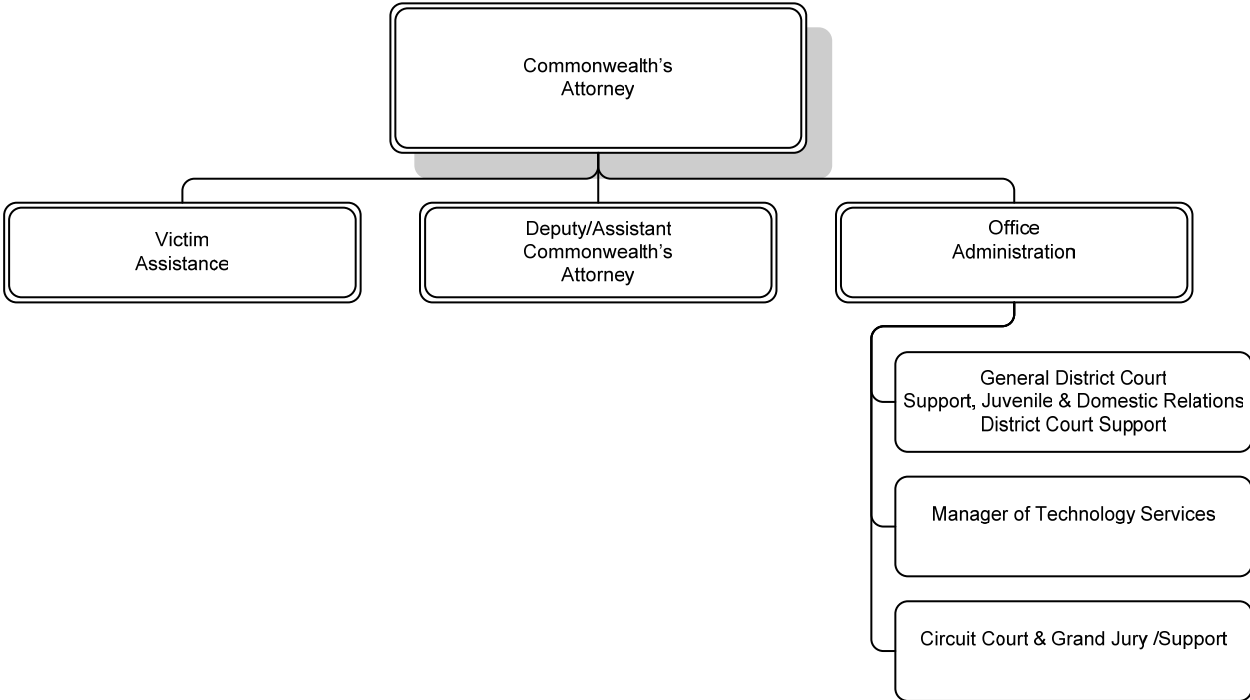
Our Mission: "To see that the innocent go free and the guilty are convicted"

The Commonwealth's Attorney, a Constitutional Officer for the Commonwealth of Virginia, is responsible for the prosecution of all criminal offenses occurring within Arlington County Ronald Reagan Washington National Airport as well as felony offenses committed within the City of Falls Church. In addition, this function also entails the review of criminal complaints and the rendering of legal assistance to police officers. The Commonwealth's Attorney and Deputies assign and schedule all cases, as well as oversee their evaluation and preparation. The Commonwealth's Attorney, or his Assistants, appears in the General District Court, Juvenile and Domestic Relations District Court and the Circuit Court.

DEPARTMENT DIVISIONS



DEPARTMENTAL ORGANIZATION CHART



FY 2007 PRIORITIES

- To successfully prosecute offenders charged with committing violent crimes with particular emphasis on gang related violent crimes.
- To properly investigate allegations of serious criminal activity through the investigative grand jury.
- To continue to attack the problem of domestic violence through swift and effective prosecution and strong victim support services.
- To assure that the rights of crime victims are recognized and protected

DEPARTMENT FINANCIAL SUMMARY

	FY 2005 Actual	FY 2006 Adopted	FY 2007 Proposed	% Change '06 to '07
Personnel	\$2,902,589	\$3,296,638	\$3,439,163	4%
Non-Personnel	274,514	150,474	144,956	-4%
Total Expenditures	3,177,103	3,447,112	3,584,119	4%
Fees	42,052	44,621	35,111	-21%
Grants	1,398,325	1,300,501	1,324,522	2%
Total Revenues	1,440,377	1,345,122	1,359,633	1%
Net Tax Support	\$1,736,726	\$2,101,990	\$2,224,486	6%
Authorized FTEs	39.0	40.0	40.0	
Funded FTEs	39.0	40.0	40.0	

SIGNIFICANT BUDGET CHANGES

The FY 2007 proposed budget for the Commonwealth's Attorney is \$3,584,119, a four percent increase over the FY 2006 adopted budget. The proposed budget reflects:

- ↑ A two percent market pay line adjustment, a 10% increase in employer health insurance costs, and an increase in employer retirement contributions to maintain full funding of the retirement fund.
- ↓ Decrease in non-personnel costs is due to reductions in DTS telephone charges (\$4,686) and auto charges (\$832).
- ↓ Decrease in fee revenues is due to lower Falls Church projections (\$9,510) based on FY 2005 actual.
- ↑ Increase in grant revenues is due to a restoration of state funding for office expenses (\$11,823) and additional funding for the HIDTA grant (\$28,175), partially offset by a ten percent reduction in state funding for the Victim/Witness Program (\$15,977).

PERFORMANCE MEASURES

	FY 2002 Actual	FY 2003 Actual	FY 2004 Actual	FY 2005 Actual	FY 2006 Estimate	FY 2007 Estimate	FY 2007 Goal
Number of indictments terminated without adjudication	N/A	52	107	83	85	85	75
Number of felony guilty pleas	N/A	751	995	1,238	1,100	1,200	1,200

COMMONWEALTH'S ATTORNEY
DEPARTMENT BUDGET SUMMARY

	FY 2002 Actual	FY 2003 Actual	FY 2004 Actual	FY 2005 Actual	FY 2006 Estimate	FY 2007 Estimate	FY 2007 Goal
Number of "No True Bills" (grand jury does not issue indictments)	N/A	1	2	4	1	3	0
Percent of victims sent information on basic rights and program service	N/A	N/A	61%	59%	66%	66%	70%
Percent of qualifying victims receiving direct services	N/A	N/A	39%	41%	34%	40%	40%
Circuit Court: Indictments	1,426	1,550	1,618	1,345	1,300	1,300	N/A
Circuit Court: Misdemeanor appeals	225	206	223	356	300	300	N/A
Circuit Court: Sentencings	996	1,069	1,134	788	1,200	1,000	N/A
Circuit Court: Probation revocation	1,927	1,723	1,010	1,130	1,100	1,100	N/A
General District Court: Criminal Cases	8,841	5,715	6,783	7,023	7,500	7,500	N/A
General District Court: Traffic Cases	76,693	65,637	78,550	76,013	80,000	80,000	N/A
Juvenile and Domestic Relations District Court: Juvenile Cases	1,642	1,599	1,662	1,486	1,650	1,500	N/A
Juvenile and Domestic Relations District Court: Adult Misdemeanors	547	528	500	447	550	500	N/A
Juvenile and Domestic Relations District Court: Adult Felonies	97	86	90	81	100	100	N/A