



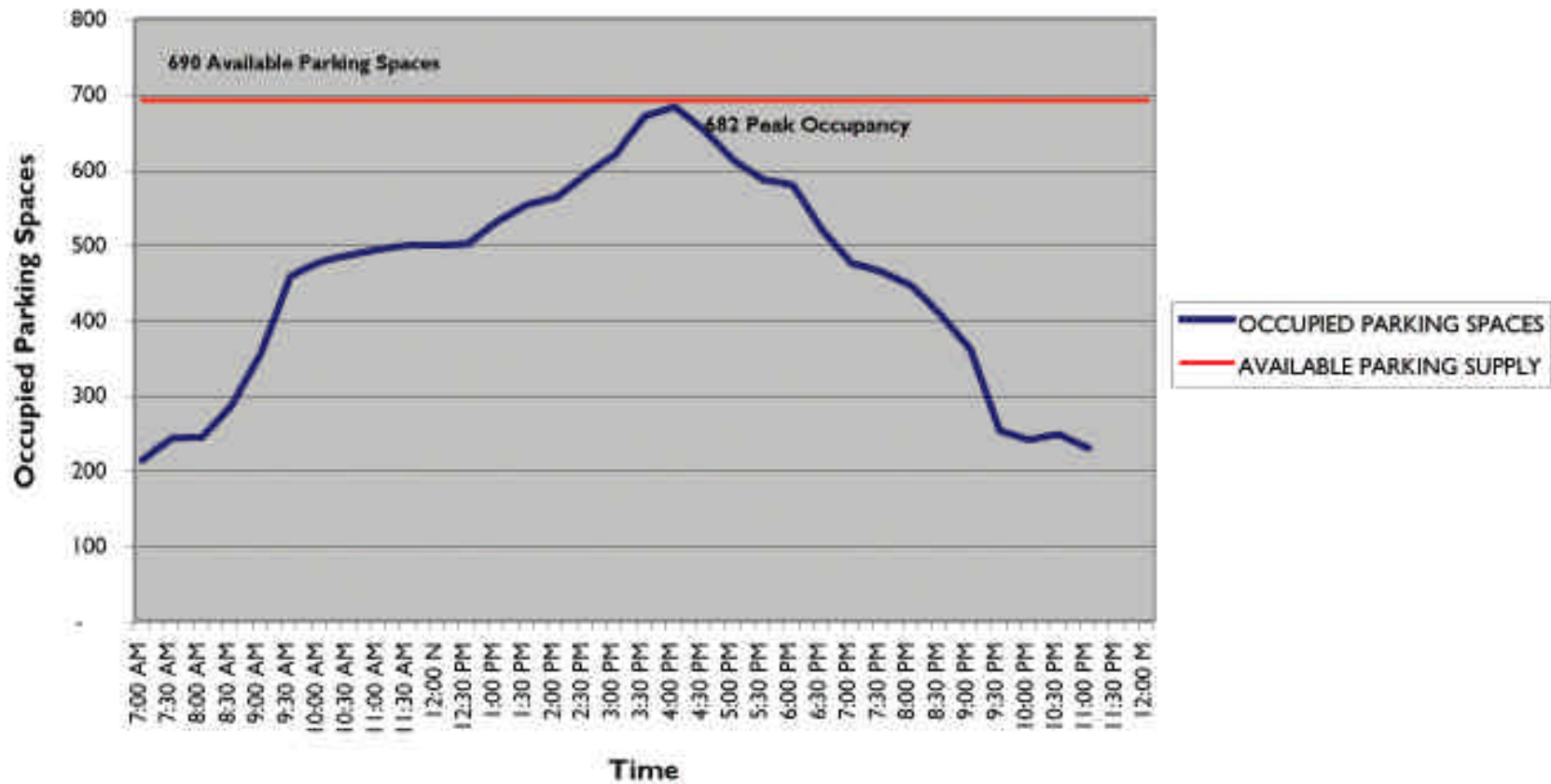
SPRC Meeting
Monday, June 11, 2007

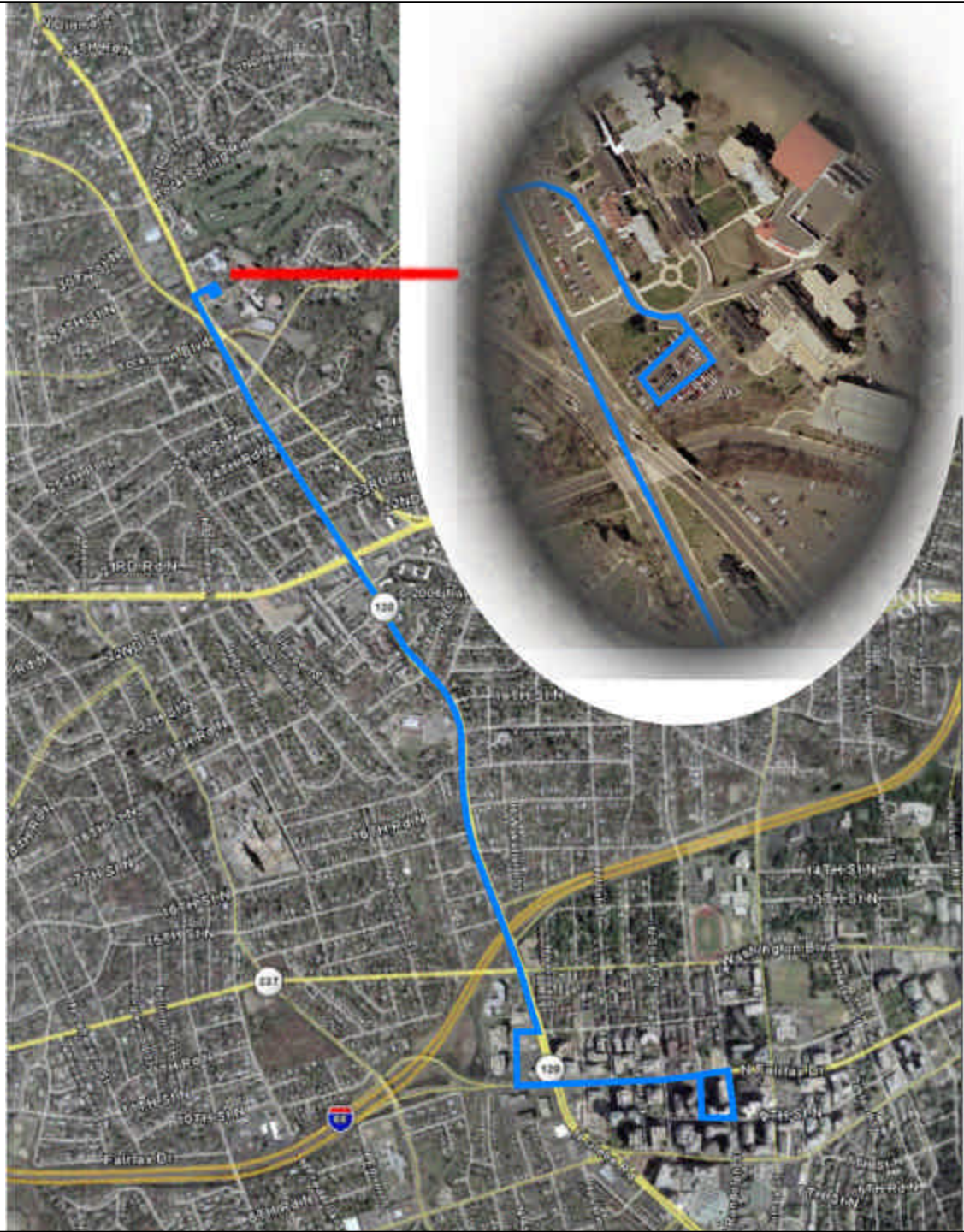


Existing On-Site Parking Supply



Existing Parking Occupancy (Wednesday, October 12, 2005)



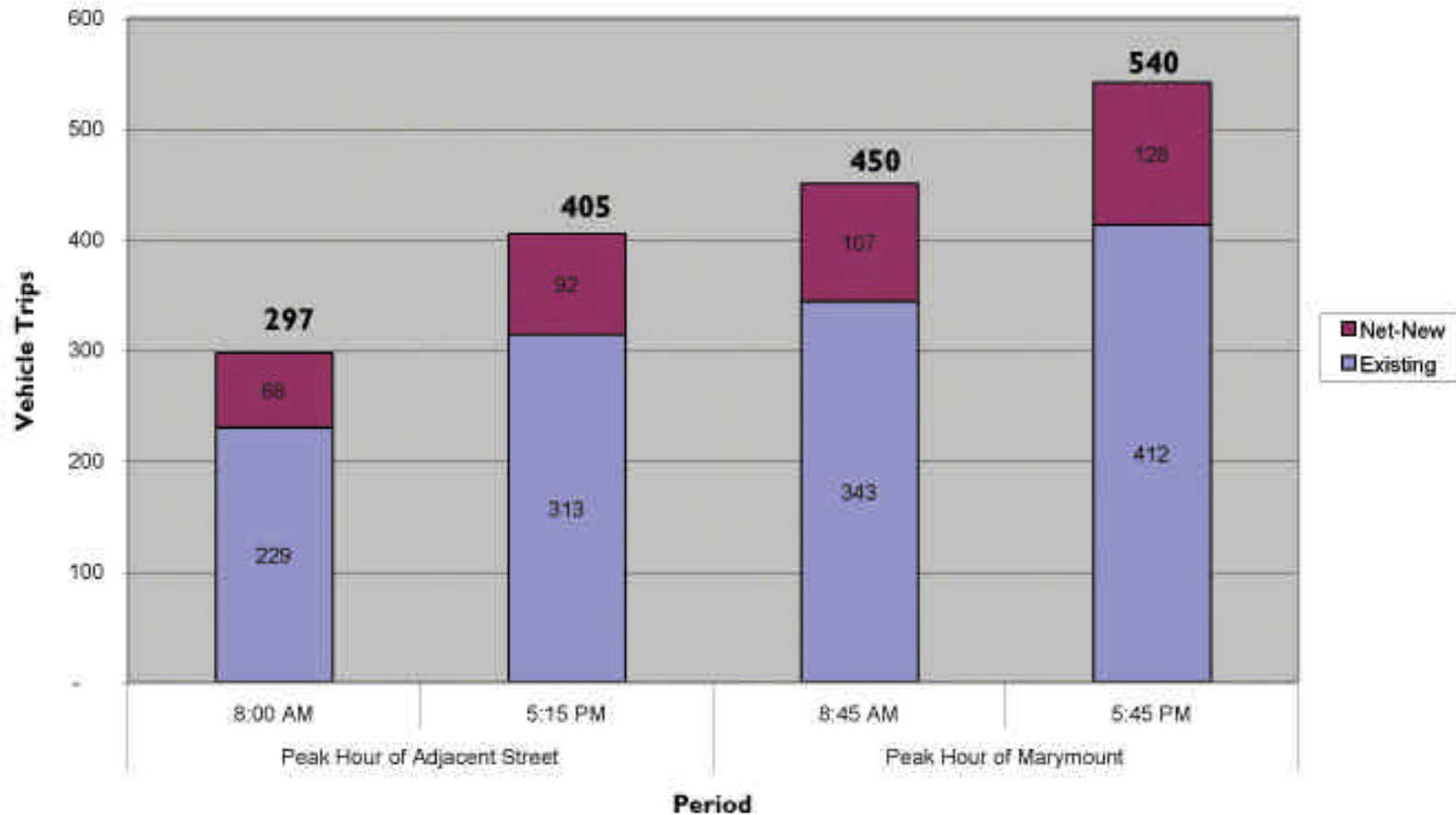


Study Area



MARYMOUNT UNIVERSITY
ARLINGTON VIRGINIA

Vehicle Trip Generation Summary



On-Campus Students With Parking Permits

- Existing Upperclassmen On-Campus = 240
- Existing Upperclassmen On-Campus with Parking Permits = 127
- Percent of Upperclassmen On-Campus with Parking Permits = 53%

- Anticipated Additional Upperclassmen On-Campus with This Proposal = 170
- Anticipated Additional Upperclassmen with Parking Permits On-Campus with This Proposal = 90 (170 x 53% = 90)

- Anticipated Total Upperclassmen with Parking Permits On-Campus = 217 (127 + 90 = 217)



Parking Management Plan

- Parking Permits
- Arlington County Residentially Zoned Parking
- Enforcement
- Campus Safety
- Event Parking
- Pick-up and Drop-off
- Pedestrian Circulation
- Circulation and Signage
- Loading Management Plan
- Transportation Demand Management
- Shuttle Bus Service
- Bus Stops
- Parking During Construction

Future Delays & Queues at North 26th Street & Yorktown Boulevard

- **Minor Street Stop Control**

- EB delay ranks 2
- EBL delay ranks 2
- EBL queue ranks 1
- NBL queue ranks 1

- **All-Way Stop Control**

- EB delay ranks 1
- EBL delay ranks 1
- EBL queue ranks 2
- NBL queue ranks 2

- **Signalization**

- EB delay ranks 3
- EBL delay ranks 3
- EBL queue ranks 3
- NBL queue ranks 3

Conclusions

- Signalization of 26th Street and Yorktown Boulevard would create delay for vehicles traveling on 26th Street and therefore create more delay per vehicle at the intersection
- Signalization of 26th Street and Yorktown Boulevard would create worse delays than STOP control for the critical eastbound left turn and northbound left turn
- Drop-off location not recommended on Old Dominion Drive (Principal Arterial Roadway) because VDOT and Arlington County do not support “drop-off” at this location
- Proposed drop-off location is centrally located on campus
- Proposed location of new garage access is ideal because it allows for access via Yorktown Boulevard (Minor Arterial)
- Proposed location of new garage is ideal because it locates parking at the periphery of campus



SPRC Meeting
Monday, June 11, 2007