

BALANCE



SOM

SECURITY

OPENNESS



Two Important (but very different) Dates

April 19, 1995

September 11, 2001

ADVERSITY

OPPORTUNITY





Jerseyland



The "Fortress"



Urban Park Plazas



Landscape



“Creative” Bollards



Elevation Changes



Street Furniture



Use of Non Security Functions in Standoff Areas

PERCEPTION

REALITY



RISK

NEGLIGENCE



POLITICS

MONEY



THE
PRESENT

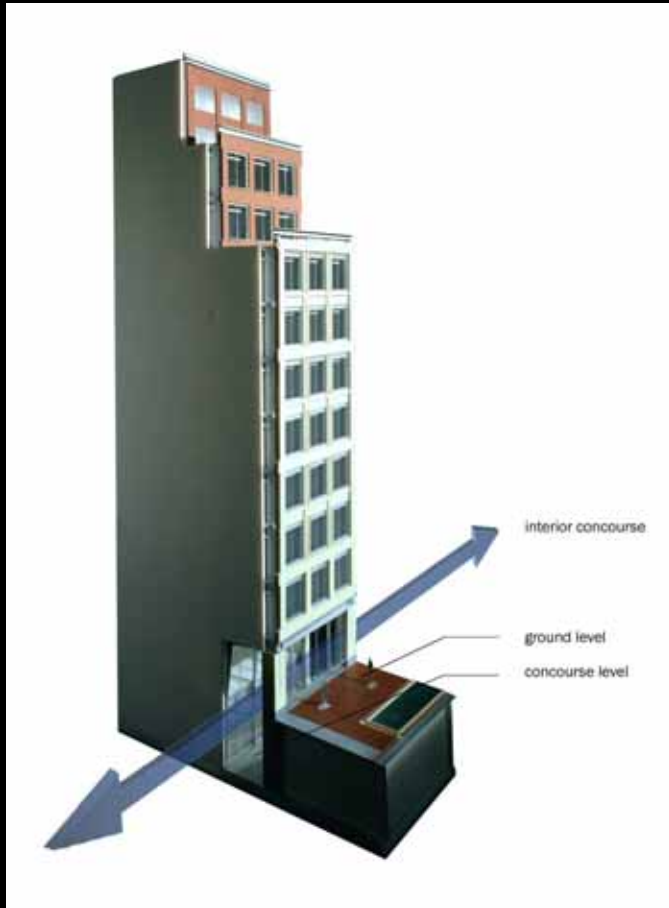


THE
FUTURE

United States Patent and Trademark Office Headquarters Alexandria, Virginia

- Progressive Collapse Mitigation
- Stand-off Distance At Criteria
- Underground Security Circulation
- Indoor “Moat” Concept
- Entire Gardens Can Be Secured





World Trade Center Seven

New York, New York

- Progressive Collapse Mitigation
- Reinforced Concrete Cores
- Redundant Egress System
- Stairs 10% Wider than Code
- Air Intakes at Roof Level (700 Feet)
- Emergency Responder Elevator Solely for Police and Firefighters
- Pressurized Dedicated Responder Stair Tower





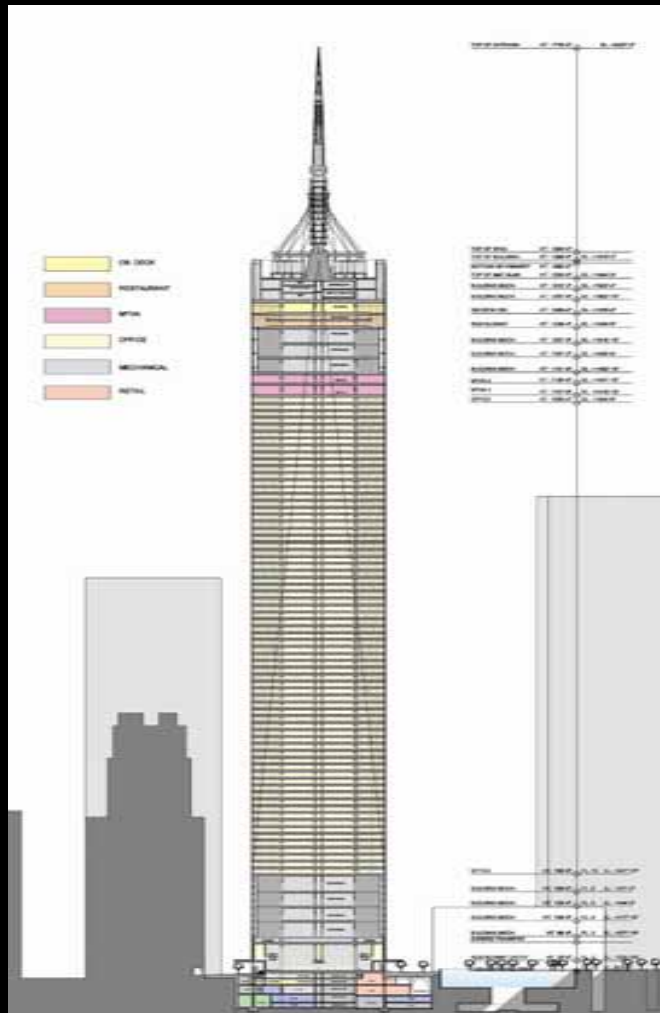
World Trade Center One

New York, New York

- Progressive Collapse Mitigation
- Blast Wall Base Behind Translucent Art Glass
- First Occupied Floor at 186 Feet (Vertical & Horizontal “Standoff”)
- Glass Designed to GSA Blast Standards
- Stainless Steel Bollards
- Reinforced Concrete Cores
- Air Intakes at 1000 Foot Level







IMMEDIACY **LASTING EFFECTS**

